

SCENTA A301C Aroma Diffuser



SCENTA A301C Aroma Diffuser Owner's Manual

[Home](#) » [SCENTA](#) » SCENTA A301C Aroma Diffuser Owner's Manual 

Contents

- [1 SCENTA A301C Aroma Diffuser](#)
- [2 Product Information](#)
- [3 Product Usage Instructions](#)
- [4 FAQ](#)
- [5 Specification](#)
- [6 Bluetooth instruction](#)
- [7 Installation Steps](#)
- [8 Concentration and consumption](#)
- [9 Troubleshooting](#)
- [10 Equipment cleaning](#)
- [11 FCC Statement](#)
- [12 Documents / Resources](#)
 - [12.1 References](#)



SCENTA A301C Aroma Diffuser



Product Information

Specifications

- **Model:** 50301-00103(503010057)
- **Size:** 240*208mm
- **Bottle:** 128g
- **Input Power:** Not specified
- **Coverage:** Not specified
- **N.W.:** Not specified
- **Material:** Not specified

Product Usage Instructions

Bluetooth Connection

To connect your device via Bluetooth, follow these steps:

1. Turn on the Bluetooth function on your device.
2. Ensure that the location function of your mobile phone is turned on.
3. Search for “ScentMarketing” in Google Play or App Store to get the app.

Installation Steps

Follow these steps for installation:

1. Unlock the machine.
2. Take out the Atomized head with the bottle.
3. Unscrew the oil bottle.

4. Add the oil.
5. Install the bottle with an atomized head and lock the machine.

Concentration and Consumption

The table below shows different grades, work times, stop times, and oil consumption rates:

Troubleshooting

If you encounter any issues with the machine, refer to the following troubleshooting guide:

Equipment Cleaning

To clean the machine, follow these steps:

1. Pull out the atomized head and loosen the bottle.
2. Fill a larger container with industrial alcohol and soak the atomized head and bottle for 5-10 minutes.
3. Air out the atomized head and the bottle.

FAQ

- **Q:** What should I do if I forget the password?
- **A:** Press the reset button to restore the factory settings. The default password is 8888.
- **Q:** What are the recommended applications for this product?
- **A:** The product is suitable for use in hotels, conference halls, lobbies, bars, SPAs, etc.

Specification

[Model]	A301C
[Size]	Ø148*473 mm
[Bottle]	1000ml
[Input]	DC 12V= 1A MAX
[Power]	5W
[Coverage]	400m ² /1200m ³ /42500ft ³
[N.W.]	03.1kg
[Material]	aluminum



Oil bottle



Adaptor



Manual



Bluetooth module

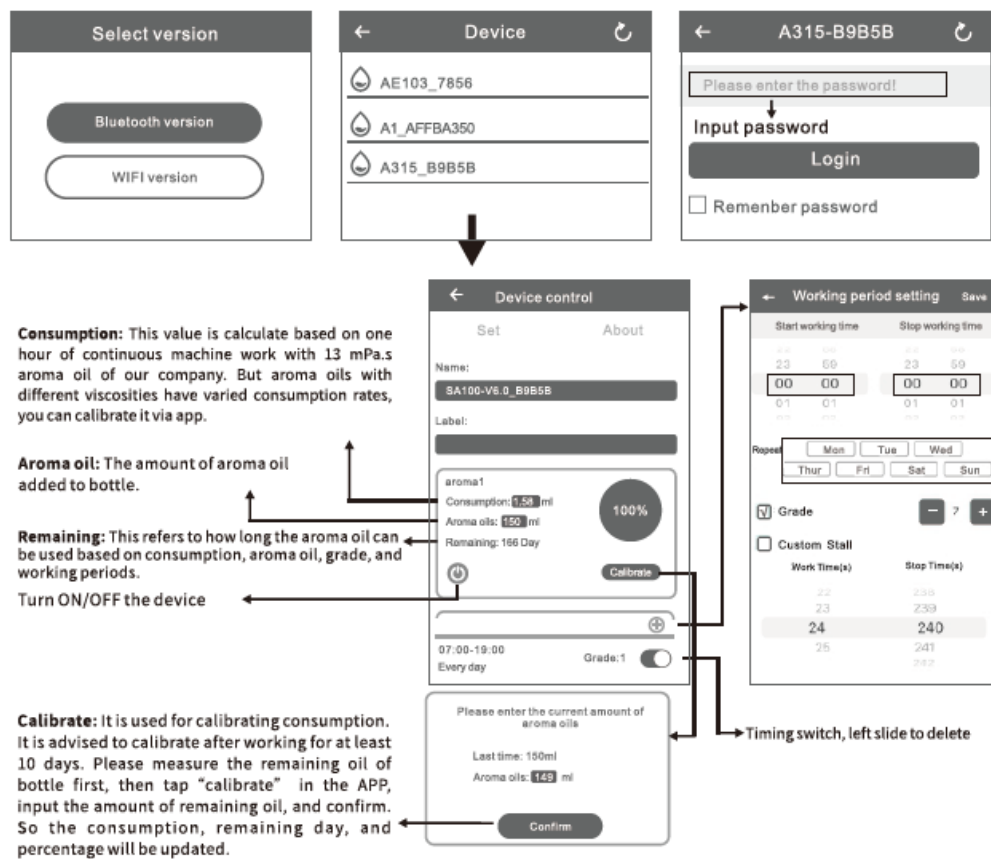
Bluetooth instruction

Where to get the app:

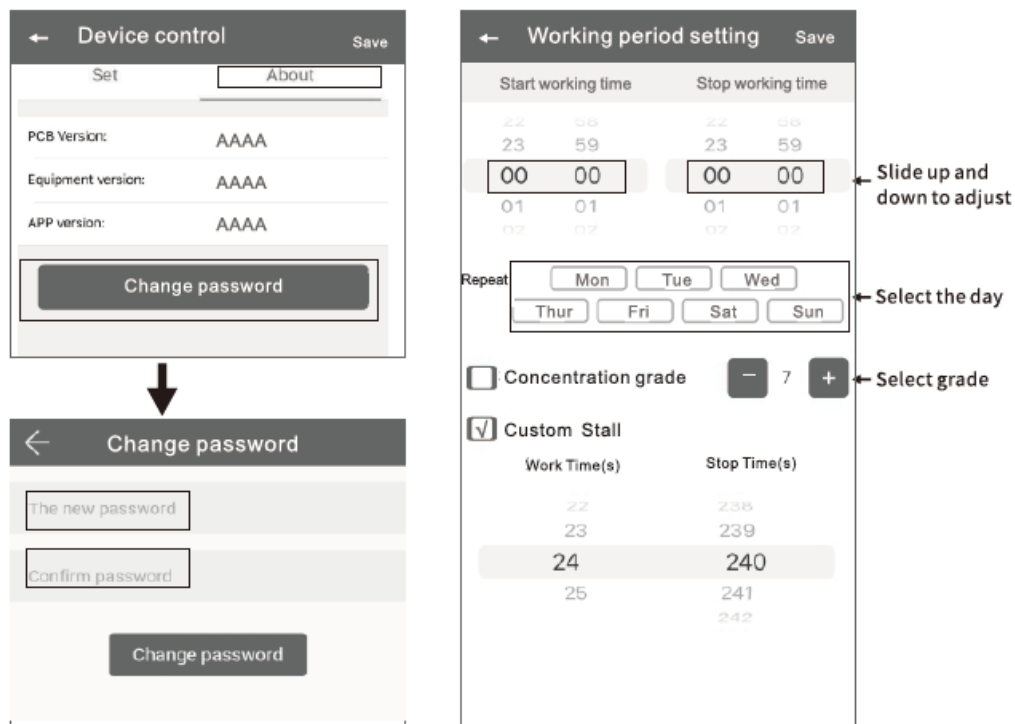
Please search for “scent marketing” in Google Play or the App Store.

Note:

1. Please make sure that the Bluetooth function is turned on;
2. Please make sure that the location function of the mobile phone is turned on

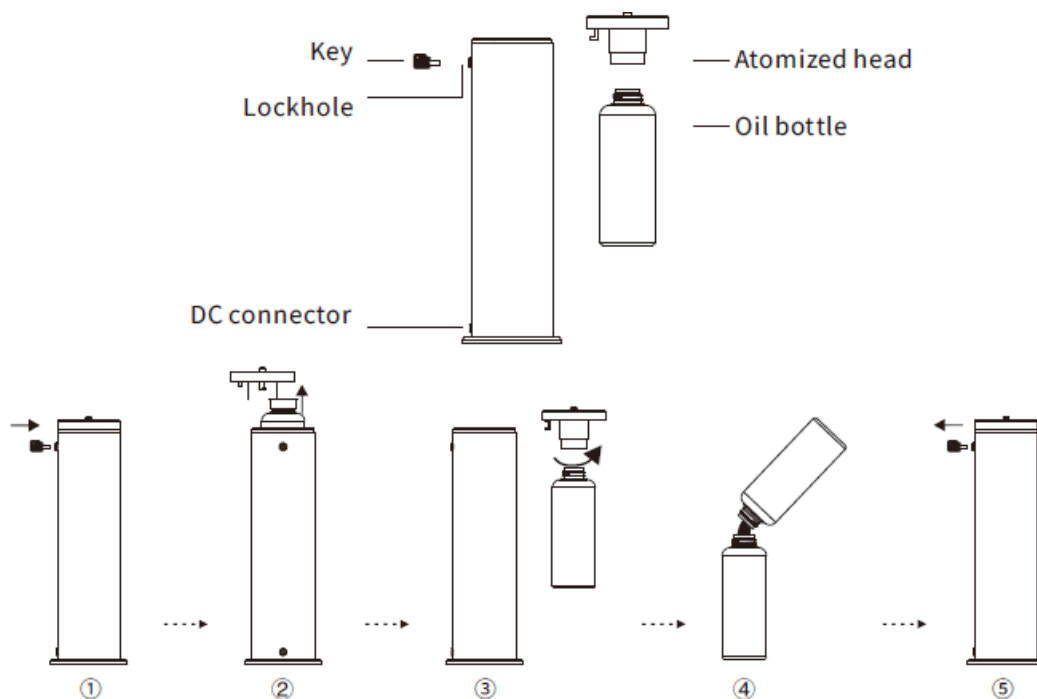


Amend password



Installation Steps

Application: Hotel, conference hall, lobby, bar, SPA, etc.



1. Unlock the machine
2. Take out the Atomized head with bottle
3. Unscrew the oil bottle
4. Adding the oil;
5. Install the bottle with an atomized head, and lock the machine

Concentration and consumption

Grade	Worktime(s)	Stop time(s)	Consumption(g/h)
G1	15s	300s	0.30
G2	15s	150s	0.40
G3	20s	120s	0.50
G4	20s	85s	0.60
G5	25s	80s	0.70
G6	30s	75s	0.80
G7	30s	60s	0.90
G8	30s	50s	1.00
G9	30s	40s	1.10
G10	30s	33s	1.20
G11	33s	30s	1.28
G12	40s	30s	1.36
G13	50s	30s	1.44
G14	60s	30s	1.52
G15	75s	30s	1.60
G16	80s	25s	1.68
G17	85s	20s	1.76
G18	120s	20s	1.84
G19	150s	15s	1.92
G20	300s	15s	2.00
Customized	5-500s	5-500s	---

Note:

1. The above data is based on testing oil in a laboratory
2. The above data is for reference only. The consumption of different oils may be different.

Warning

1. Please keep the machine vertical after installation. Tilting or lying flat can cause oil to overflow, and the circuit board may be contaminated, which could affect its efficiency;
2. Should not modify, dismantle or repair the machine arbitrarily. If any malfunction occurs please contact the relevant technician immediately



Troubleshooting

Before asking to have the machine repaired, please try to diagnose the problem first by following to below instructions.

Breakdown	Solution
Does not diffuse	<ul style="list-style-type: none"> -Check whether the mode you choose is correct or not. -Check if the machine is during "Non-Working period" -Air pump may be damaged, change a new one. -Check whether the tube is loose or not
Low diffuse	<ul style="list-style-type: none"> -The atomizing core is blocked, clean by alcohol or change a new component. -Check whether the gasket is damage/loose or not. -Check whether the tube is loose or not
Oil spill	<ul style="list-style-type: none"> -Check whether the bottle is loose or not -The gasket in the atomized head is damaged or loose.
Oil sprinkle	<ul style="list-style-type: none"> -The atomized head is damaged, change a new one -The machine is tilted or lie down, keep the machine vertical.
Abnormal noise	<ul style="list-style-type: none"> -The air pump is loose, retighten the pump -The air pump is damaged, change a new one.

Equipment cleaning

The machine needs to be cleaned when the below situations happen

1. You're about to change to another kind of essential oil;
2. The atomization volume becomes weak.

Cleaning steps

1. Pull out the atomized head, lose the bottle.
2. Find a larger container and fill the industrial alcohol up, then soak the atomized head and the bottle for 5-10mins.
3. Airing the atomized head and the bottle.

FCC Statement

This device complies with part 15 of the FCC Rules. Operation is subject to the following two conditions:

1. This device may not cause harmful interference, and
2. this device must accept any interference received, including interference that may cause undesired operation.

This equipment has been tested and found to comply with the limits for a Class B digital device, pursuant to part 15 of the FCC Rules. These limits are designed to provide reasonable protection against harmful interference in a residential installation. This equipment generates, uses and can radiate radio frequency energy and, if not installed and used in accordance with the instructions, may cause harmful interference to radio communications. However, there is no guarantee that interference will not occur in a particular installation. If this equipment does cause harmful interference to radio or television reception, which can be determined by turning the equipment off and on, the user is encouraged to try to correct the interference by one or more of the following measures:

- Reorient or relocate the receiving antenna.
- Increase the separation between the equipment and the receiver.
- Connect the equipment to an outlet on a circuit different from that to which the receiver is connected.
- Consult the dealer or an experienced radio/TV technician for help.

FCC Caution: Any changes or modifications not expressly approved by the party responsible for compliance could void the user's authority to operate the equipment. This transmitter must not be co-located or operating in conjunction with any other antenna or transmitter. Not applicable

RF Exposure

This device complies with FCC radiation exposure limits set forth for an uncontrolled environment. This equipment should be installed and operated with a minimum distance of 20cm between the radiator & your body.



Android system



IOS system

If the QR code cannot be scanned, please search for "Scent Marketing" in the Google playor APP store.

Scent marketing



Documents / Resources



[SCENTA A301C Aroma Diffuser](#) [pdf] Owner's Manual
A301C Aroma Diffuser, A301C, Aroma Diffuser, Diffuser

References

- [User Manual](#)

[Manuals+](#), [Privacy Policy](#)

This website is an independent publication and is neither affiliated with nor endorsed by any of the trademark owners. The "Bluetooth®" word mark and logos are registered trademarks owned by Bluetooth SIG, Inc. The "Wi-Fi®" word mark and logos are registered trademarks owned by the Wi-Fi Alliance. Any use of these marks on this website does not imply any affiliation with or endorsement.