

Scent
M500 Aromatherapy
Diffusers



Scent M500 Aromatherapy Diffusers User Manual

[Home](#) » [Scent](#) » Scent M500 Aromatherapy Diffusers User Manual 

Contents

- [1 Scent M500 Aromatherapy Diffusers](#)
- [2 Product parameters](#)
- [3 Safety precautions](#)
- [4 Equipment maintenance](#)
- [5 Fragrance expander accessories](#)
- [6 Atomization core replacement](#)
- [7 Equipment troubleshooting](#)
- [8 Documents / Resources](#)
 - [8.1 References](#)

Scent

Scent M500 Aromatherapy Diffusers



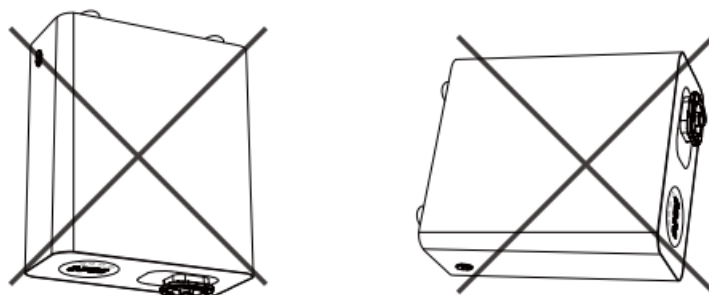
Product Manual

This is a device suitable for small area coverage below 500CBM. Can be used in commercial areas or domestic use. Thank you for choosing our diffuser. Hope our diffuser can give you an irreplaceable experience. It is a remote-controlled diffuser. Simply press the remote control button to adjust the value of each column.

Product parameters

Product Name	Aromatherapy Diffusers
Product code	See packaging
input voltage	DC12V=1A
Rated power	12W
Essential oil capacity	300ml
Applicable area	500m ³ below
Color of the diffuser	Black/silvery
Fragrant expander materials	Sheet metal+aluminum alloy
Expander size	18× 9× 22CM
Installation method	Vertical placement or wall hanging

Safety precautions






- Please read this manual carefully before use and save it for future use.
- Please do not tilt the oil bottle in the diffuser.
- Please use a suitable adapter for the diffuser.
- Do not leak or spill the essential oil in the diffuser.
- Please do not see fire person meet as with permission.
- Please set the timer correctly. The start time should be earlier than the end time

Equipment maintenance

- After using it for some time, please use 95% industrial alcohol to clean the interior of the diffuser (such as the atomizer, bottle, nozzle, and related interior).
- Operation steps: Pour out the oil from the bottle, add 95% industrial alcohol, and then run the aroma expander for 10-15 minutes. Then turn off the diffuser.
- Reminder: Please clean the diffuser with 95% alcohol once within 1-2 months of use.

Fragrance expander accessories

		
power line	Atomization core	hose

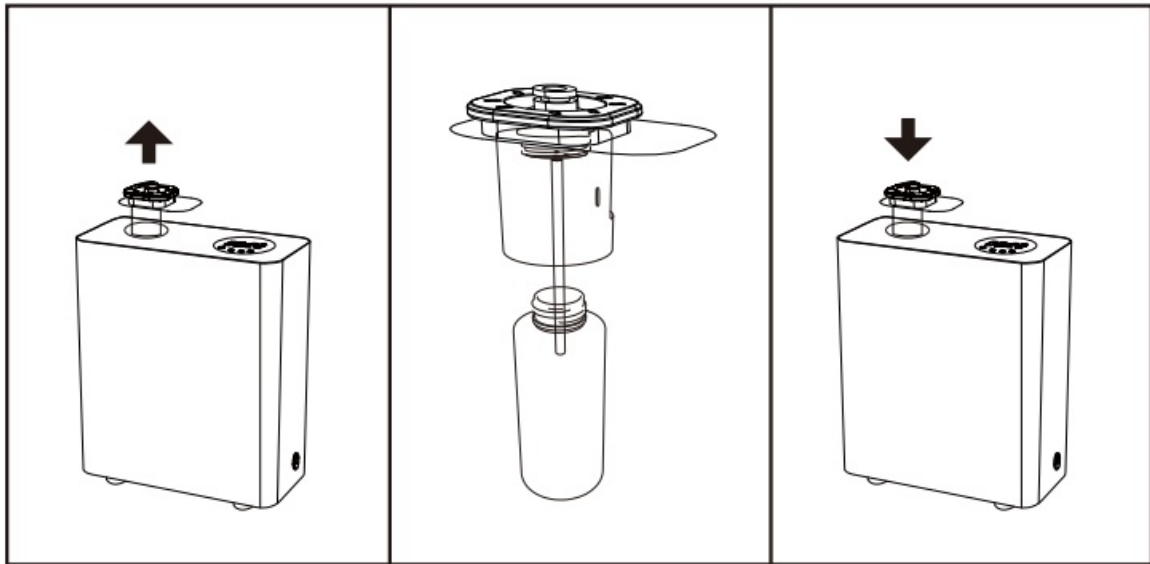
APP control – Bluetooth/WiFi connection



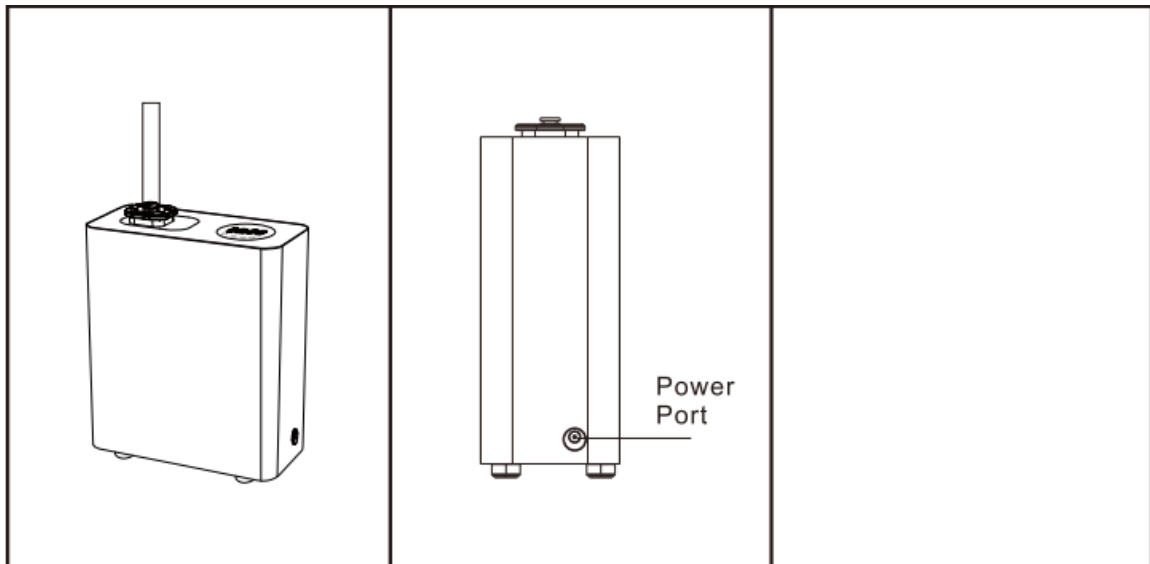

Scan code to download the app

Equipment installation

1. When the machine is turned off, lift the atomizer head up slightly and remove it.



2. Take out the essential oil bottle and pour in pure essential oil; Tighten and parallel to the top half of the machine
3. Tighten the atomization head according to the corresponding position
4. If the machine needs to be connected to the fresh air conditioning system, a hose can be used to connect it.



5. Insert the power cord into the power port to power it on and use it.

Atomization core replacement

1. To replace the atomization core, unplug the power supply of the fragrance expander, remove the oil bottle, and carefully pull out the transparent tube. Gently twist the white atomization core and gently pull it out.
2. Replace with a new atomization core and ensure that it is firmly pressed into the top of the diffuser. Reinsert the pipeline into the nozzle



3. It is important to place the pipeline into the correct opening of the nozzle, otherwise the device will not be able to emit odor. There is a small circular pipe bracket inside the nozzle, which needs to be firmly fixed in it.

Tip: If it is difficult for you to see the pipe bracket inside the nozzle, please place a flashlight inside the nozzle to increase visibility.

Equipment troubleshooting

Troubleshooting	Solutions
Diffuser not working	1- Check if device is under working period. 2- Check if device is powered on. 3- Check if the atomizer was installed correctly
No misting	1- Reinstall atomizer properly 2- Please use 95% alcohol wash the atomizer 3- Keep the device vertically placed

This device complies with part 15 of the FCC Rules. Operation is subject to the following two conditions: (1) This device may not cause harmful interference, and (2) this device must accept any interference received, including interference that may cause undesired operation.

Any Changes or modifications not expressly approved by the party responsible for compliance could void the user's authority to operate the equipment.

Note: This equipment has been tested and found to comply with the limits for a Class B digital device, under part



15 of the FCC Rules. These limits are designed to provide reasonable protection against harmful interference in a residential installation. This equipment generates uses and can radiate radio frequency energy and, if not installed and used by the instructions, may cause harmful interference to radio communications. However, there is no guarantee that interference will not occur in a particular installation. If this equipment does cause harmful interference to radio or television reception, which can be determined by turning the equipment off and on, the user is encouraged to try to correct the interference by one or more of the following measures:

- Reorient or relocate the receiving antenna.
- Increase the separation between the equipment and the receiver.
- Connect the equipment to an outlet on a circuit different from that to which the receiver is connected.
- Consult the dealer or an experienced radio/TV technician for help.

FCC Radiation Exposure Statement

The device has been evaluated to meet general RF exposure requirements. The device can be used in portable exposure conditions without restriction.

Documents / Resources

	Scent M500 Aromatherapy Diffusers [pdf] User Manual M280, 2BK5F-M500, M500 Aromatherapy Diffusers, M500, Aromatherapy Diffusers, Diffusers
	Scent M500 Aromatherapy Diffusers [pdf] User Manual 2BK5F-M500, 2BK5FM500, M500 Aromatherapy Diffusers, M500, Aromatherapy Diffusers, Diff users

References

- [User Manual](#)

[Manuals+](#), [Privacy Policy](#)

This website is an independent publication and is neither affiliated with nor endorsed by any of the trademark owners. The "Bluetooth®" word mark and logos are registered trademarks owned by Bluetooth SIG, Inc. The "Wi-Fi®" word mark and logos are registered trademarks owned by the Wi-Fi Alliance. Any use of these marks on this website does not imply any affiliation with or endorsement.