



[Home](#) » [SCENT BETTER](#) » **SCENT BETTER Plug In Smart Essential Oil Diffuser Instruction Manual** 

Contents [[hide](#)]

- 1 SCENT BETTER Plug In Smart Essential Oil Diffuser
- 2 WELCOME TO THE WORLD OF SCENT BETTER™
- 3 TIPS FOR OPTIMAL SCENTING
 - 3.1 LOCATION MATTERS
- 4 CHANGING THE SCENT
- 5 KEY FEATURES
- 6 WHAT'S INCLUDED
- 7 SET UP
- 8 SCENT BETTER™ APP
- 9 TROUBLESHOOTING
- 10 ADDITIONAL TIPS
- 11 WARRANTY & CONTACT US
- 12 REGULATORY INFORMATION
- 13 FCC Warning
- 14 FAQs
- 15 Documents / Resources
 - 15.1 References

SCENT BETTER™

SCENT BETTER Plug In Smart Essential Oil Diffuser



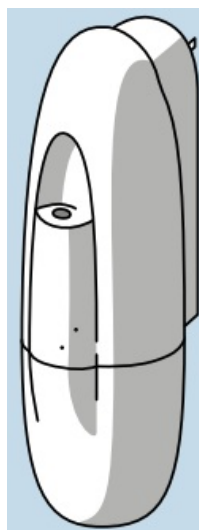
WELCOME TO THE WORLD OF SCENT BETTER™

Ready to transform your home with the power of scent?

Our diffusers deliver long-lasting, premium fragrances that will create a welcoming and inviting atmosphere.

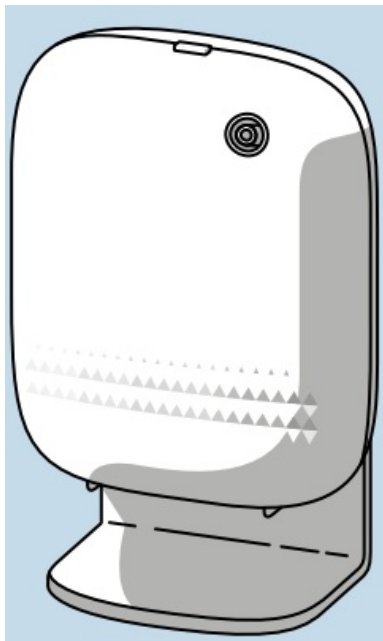
SCENT BETTER™ PLUG IN

- Compact & Convenient – Plugs directly into the wall, perfect for smaller spaces like entranceways, hallways, and bathrooms



SCENT BETTER™ PRO

- Freestanding Design – Ideal for spacious areas like living rooms and family spaces



- Plug-and-play scent bottles are available in convenient 60 mL and 100 mL sizes.



NEBULIZATION: THE FUTURE OF HOME FRAGRANCE

WHAT IS NEBULIZATION?

Imagine a gentle mist, so fine it floats in the air for hours. That's nebulization! Our cold-air diffusers use this premium technology to disperse fragrance oils in their purest form, without heat or water.

WHY IS IT BETTER?

WIDE COVERAGE

Our diffusers can fragrance spaces twice as large as traditional methods.

CONSISTENT FRAGRANCE

Enjoy even scent distribution throughout your home.

SMART CONTROL

Manage settings effortlessly via app control and Bluetooth connectivity

PURE SCENT

No dilution or heating means a cleaner, more authentic fragrance.

TIPS FOR OPTIMAL SCENTING

LOCATION MATTERS

AIRFLOW

Place your diffuser where air can circulate freely. Avoid areas like vents, windows, and doorways.

EXPERIMENT

Try different locations and intensity settings to find your ideal spot.

CLEARANCE

Ensure at least 3 feet of clearance above the diffuser for optimal scent dispersion. (Pro Only)

FINDING THE PERFECT INTENSITY

BIGGER ROOMS NEED MORE

Larger spaces might require a higher intensity setting.

START LOW AND GO SLOW

Begin with a low intensity setting and gradually adjust.

LET IT SETTLE

Give the scent an hour to spread before tweaking the intensity setting

SCHEDULE IT AND ENJOY IT

SET AND FORGET IT

Schedule your diffuser to automatically turn on and off at your desired times.

CUSTOMIZE YOUR EXPERIENCE

Adjust scent intensity and set schedules to suit your routine.

SAVE ENERGY

Run your diffuser only when you need it.

CHANGING THE SCENT

SWITCH IT UP FOR A FRESH PERSPECTIVE

Changing scents can revitalize your senses and create a new atmosphere. It's like adding a fresh coat of paint to your home, but without the hassle.

MATCH YOUR MOOD

Different scents evoke different emotions. Whether you're feeling stressed, energized, or relaxed, there's a scent to match your mood and enhance your experience.

CREATE A SEASONAL AMBIANCE

Change your scents with the seasons to create a festive or comforting atmosphere. For example, use warm, spicy scents in the fall and winter, and light, refreshing scents in the spring and summer.

SCENTS

Scent Better™ is dedicated to crafting high-quality fragrances that inspire and uplift. Our scents are carefully curated to evoke positive emotions and transform your living space into a sanctuary of tranquility.

KEY FEATURES

MOOD-BOOSTING

Experience the power of scents to enhance your well-being.

PREMIUM QUALITY

Crafted with the finest ingredients for a luxurious fragrance experience.

PLAYFUL AND INVITING

Add a touch of personality to your home with our lively scents.

VERSATILE

Perfect for any room, from living rooms to bedrooms.

SCENT BETTER®

YUZU PARADISE

This energizing aroma is designed to promote a sense of joy and vitality.



YUZU PARADISE



TOP NOTES

ORANGE
POMELO
YUZU

MID NOTES

LILY
BAMBOO
JASMINE

BASE NOTES

CEDARWOOD

SCENT BETTER®

VANILLA GLOW

Indulge in the comforting allure of a fragrance that evokes feelings of warmth and pure indulgence.



VANILLA GLOW



TOP NOTES

TONKA BEAN
VANILLA

MID NOTES

LILY OF THE VALLEY
BENZOIN
JASMINE

BASE NOTES

AMBER
SANDALWOOD

SCENT BETTER®

BAKERY BLISS

A captivating fragrance that evokes the mouthwatering scent of fresh baking.



BAKERY BLISS



TOP NOTES

ALMOND
CHERRY

MID NOTES

CARAMEL
CINNAMON
NUTMEG

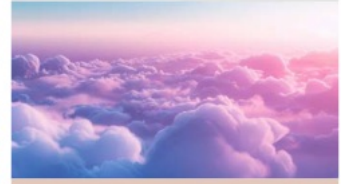
BASE NOTES

WHIPPED CREAM
VANILLA
SANDALWOOD

SCENT BETTER®

CASHMERE CLOUDS

This inviting blend of rich, velvety notes will envelop you in a soothing embrace.



CASHMERE CLOUDS



TOP NOTES

CEDAR LEAF
SAFFRON

MID NOTES

OAKMOSS
VANILLA BEAN
JASMINE

BASE NOTES

AMBER
SANDALWOOD

SCENT BETTER®

LAVENDER WONDER

A captivating fragrance designed to promote relaxation and tranquility.



LAVENDER WONDER



TOP NOTES

LAVENDER
BERGAMOT

MID NOTES

FREESIA
JASMINE

BASE NOTES

CEDARWOOD
VANILLA

SCENT BETTER®

LINEN BREEZE

This delightful blend of sunshine, linen, jasmine, and musk creates a soothing yet uplifting aroma.



LINEN BREEZE



TOP NOTES

CRISP LINEN
APPLE
BERGAMOT

MID NOTES

LILY OF THE VALLEY
ROSE

BASE NOTES

CEDARWOOD
SANDALWOOD
MUSK

SCENT BETTER®

SPA ESCAPE

An aromatherapeutic fragrance designed to promote wellness and good vibes.



SPA ESCAPE



TOP NOTES

BERGAMOT
GREEN TEA

MID NOTES

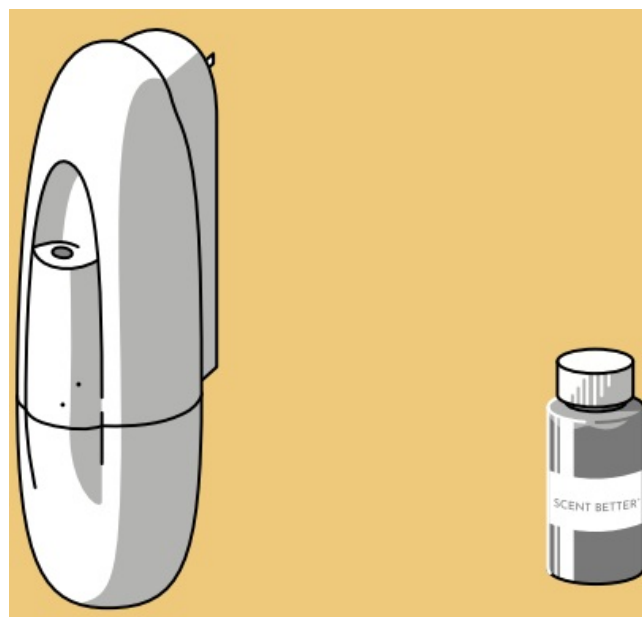
CUCUMBER
ROSE WATER

BASE NOTES

AMBER
CEDARWOOD
MUSK



WHAT'S INCLUDED



- SCENT BETTER™ PLUG IN
- BONUS GIFT 60 ML LINEN BREEZE SCENT

SET UP

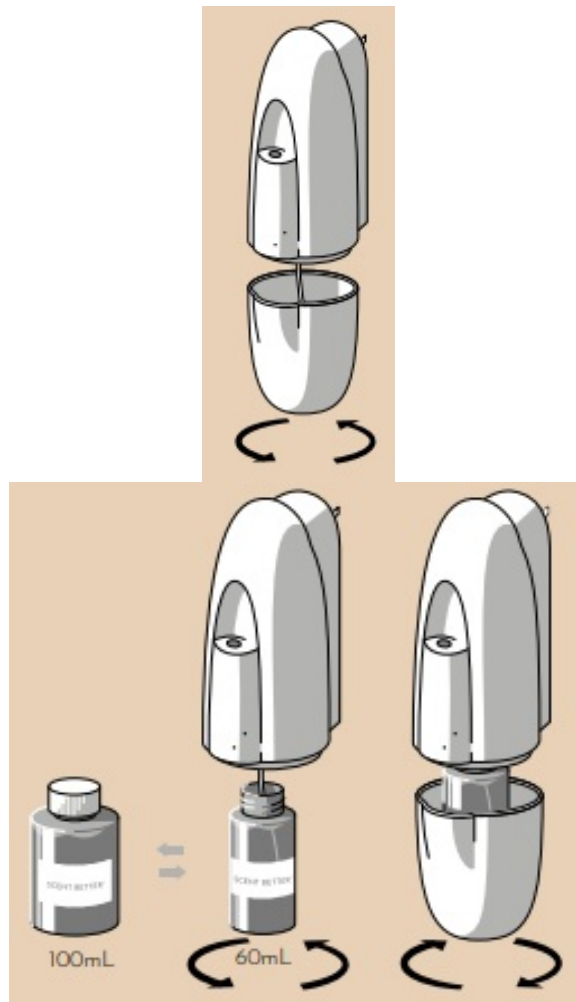
STEP 1

Twist the bottom cover to open your Scent Better™ Plug In.

STEP 2

Screw-in your Scent Better™ oil bottle, and twist the bottom cover back in place on your Scent Better™ Plug In.

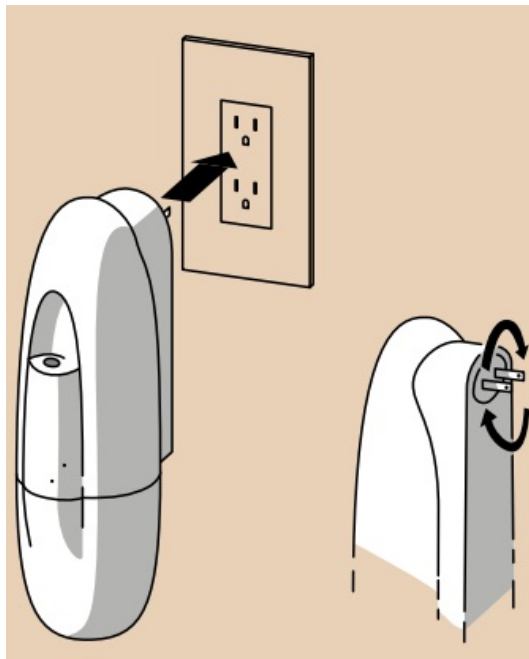
- For oil refills, both the Scent Better™ 60 mL and 100 mL sizes are compatible with your Scent Better™ Plug In.



STEP 3

Simply plug your Scent Better™ Plug In into a wall outlet, and enjoy. The pins on the rear of the Scent Better™ Plug In can be rotated to accommodate different wall plug orientations.

- Our scents are meant to be pure, please do not add water. For an optimal scenting experience, only use Scent Better™ oils.



SCENT BETTER™ APP

STEP 1

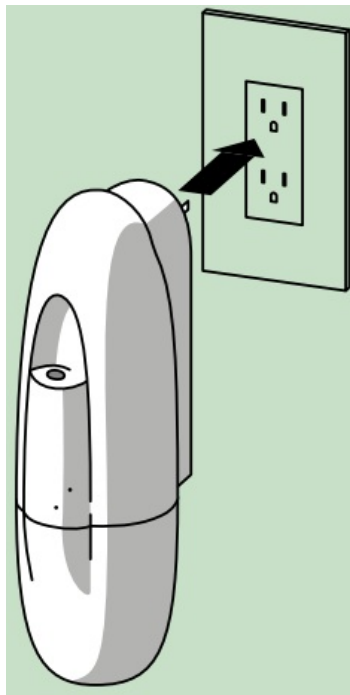
Download the Scent Better™ app from the Apple App Store (iOS) or Google Play Store (Android).



STEP 2

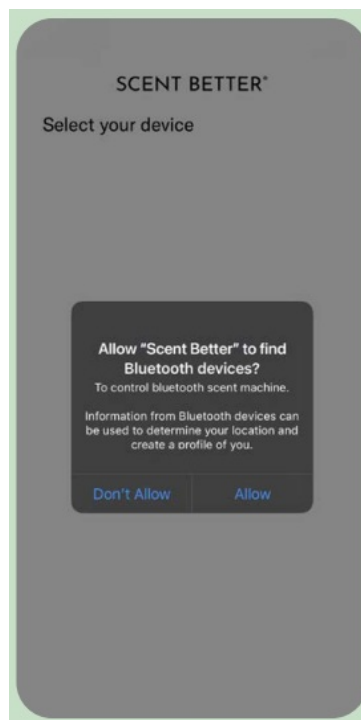
Make sure your Scent Better™ Plug In diffuser is plugged in.

Note: Your Scent Better™ Plug In diffuser will start to diffuse upon being plugged in.



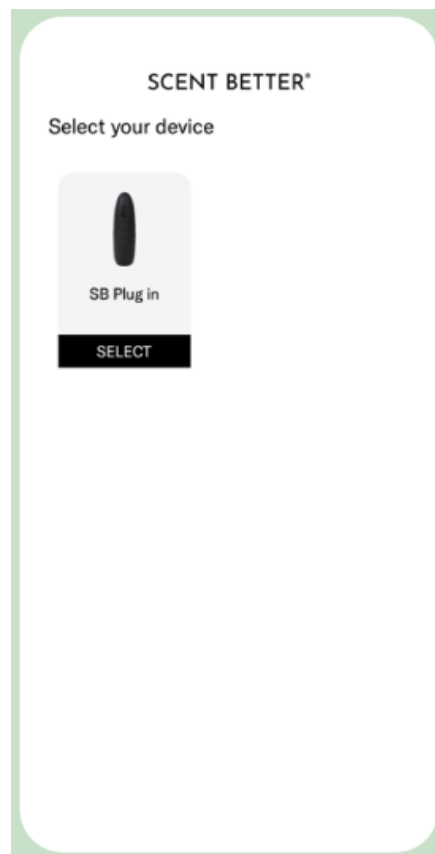
STEP 3

Ensure Bluetooth is enabled on your phone. Open the Scent Better™ app. You will receive a prompt to allow Bluetooth permissions for the Scent Better™ app.



STEP 4

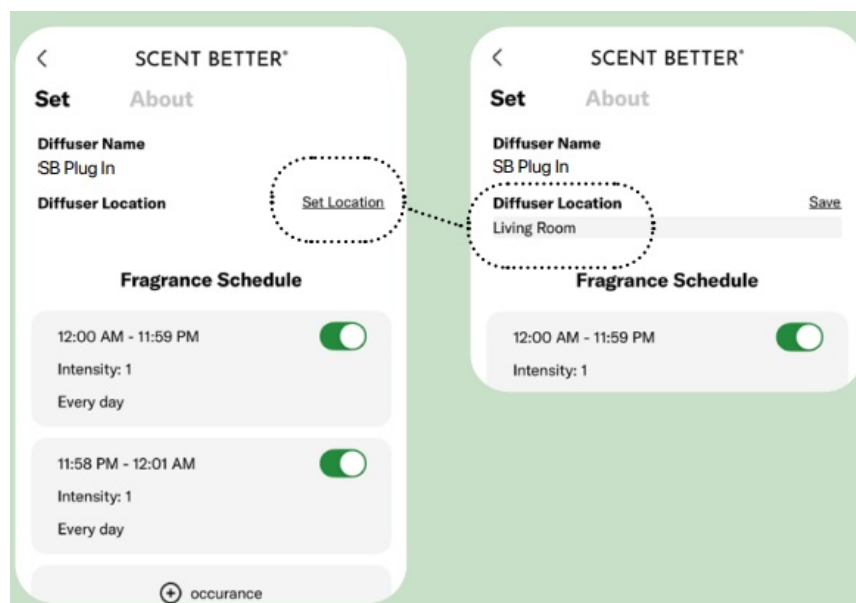
On the “Select your device” screen, select the diffuser you would like to set up.



STEP 5

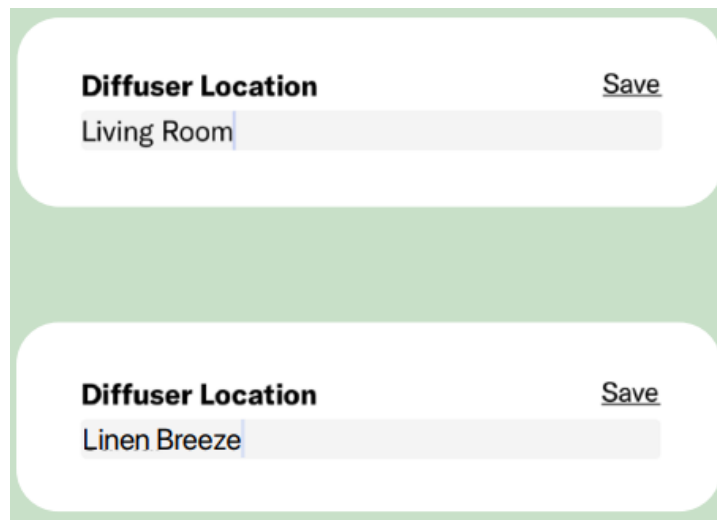
After selecting the diffuser, continue to set up your schedule and intensity.

1. Select the “Set Location” button beside “Diffuser Location”.
2. Type in the desired location in the text box
3. Click “Save” to save changes.
4. Click “Edit” to make further changes.



DEVICE NAMING TIPS

Name your diffuser based on its location to easily identify and adjust schedules when using multiple diffusers. Name your diffuser based on the scent you have diffusing. This ensures you remember what scent is installed in the diffuser.



The image shows a screenshot of a mobile application interface with a light green background. It contains two identical white rounded rectangular forms stacked vertically. Each form has a label 'Diffuser Location' in bold black text on the left and a 'Save' link in blue underlined text on the right. Below the label is a text input field. In the top form, the input field contains the text 'Living Room'. In the bottom form, the input field contains the text 'Linen Breeze'.

STEP 6

Below the “Fragrance Schedule,” you’ll see two default schedules that you can edit. You can have up to five schedules per diffuser.

To adjust and turn on any of the schedules:

4:03 SCENT BETTER®

Set About

Diffuser Name
SB Plug In

Diffuser Location Set Location

Fragrance Schedule

12:00 AM - 11:59 PM
Intensity: 1
Every day

11:58 PM - 12:01 AM
Intensity: 1
Every day

occurrence

SAVE

11:58 PM - 12:01 AM
Intensity: 1
Every day

Click on the grey area of the schedule you want to update.

Choose a desired start and end time.

Select the days for the scenting schedule.

Save your edits by clicking "Save". You'll return to the main diffuser page.

SCENT BETTER®

Set About

Diffuser Name
SB Plug In

Diffuser Location Set Location

Schedule

Start time

From 12:00 AM PM

Until 11:59 AM PM

Repeat

Mon Tue Wed Thur Fri

Sat Sun

Intensity Level - 1 +

SAVE

SAVE

Set the diffusing intensity level
There are 4 intensity settings.

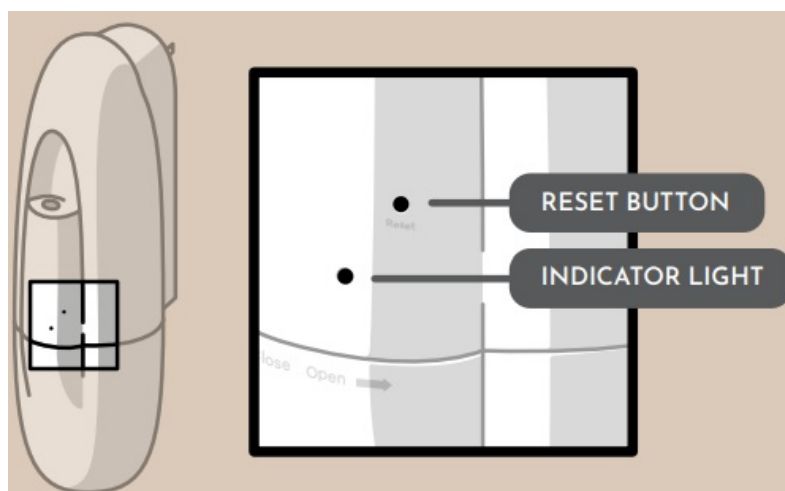
INTENSITY LEVEL	WORK TIME(S)	STOP TIME(S)
1	15 SEC	285 SEC
2	15 SEC	135 SEC
3	15 SEC	85 SEC
4	15 SEC	60 SEC

Continue editing each schedule until you've found the perfect set of schedules for your space and desired scenting experience.

TROUBLESHOOTING

RESETTING YOUR SCENT BETTER™ PLUG IN

While your Scent Better™ Plug In is connected to power, use a paperclip to press and hold the reset button for 3 seconds. Your Scent Better™ Plug In will beep, and the indicator light will blink to signal that it has been reset.



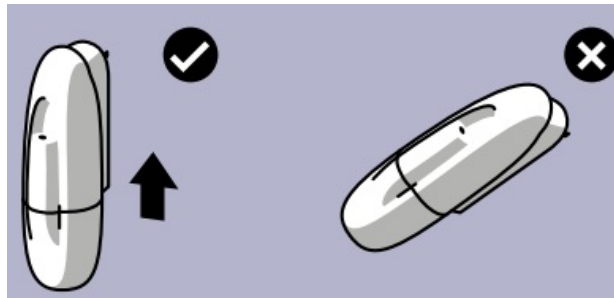
ADDITIONAL TIPS

SAFETY

Keep it out of reach of children and pets.

KEEP UPRIGHT

Always keep your Scent Better™ Plug In upright to prevent oil spills.

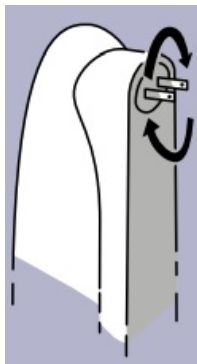


SURFACE PROTECTION

Avoid getting oil on wood or delicate surfaces. Clean spills promptly with a damp cloth.

WALL PIN ORIENTATION

The pins on the rear of the Scent Better™ Plug In can be rotated to accommodate different wall plug orientations.



CAP STORAGE

Store the cap from the installed oil bottle in a safe place for future use.

By following these tips, you can ensure your diffuser is working at its best and providing you with a delightful fragrance experience.

WARRANTY & CONTACT US

All Scent Better™ designed diffusers come with a worry-free 1-year limited warranty from the date of purchase. This warranty includes ongoing support with your diffuser. If

you have any questions or would like assistance with your diffuser, please email us at support@scentbetter.com, and we'll gladly assist you. Scent Better™ is proud to offer repairs, including all labor and parts, necessary to ensure your diffuser is in proper working condition during the warranty period. Note that repairs and exchanges are at the discretion of the Scent Better™ team. We are here to support you, however, the warranty does not cover damages or repairs due to user error or as a result of damage caused by third-party oils. Curious about scents or need help? Contact us: 1-[602-842-9554](tel:602-842-9554) support@scentbetter.com.

REGULATORY INFORMATION

UNITED STATES

This device complies with Part 15 of the FCC Rules. Operation is subject to the following two conditions:

1. This device may not cause harmful interference, and
2. This device must accept any interference received, including interference that may cause undesired operation.

FCC Warning

Changes or modifications not expressly approved by the party responsible for compliance could void the user's authority to operate the equipment.

Note: This equipment has been tested and found to comply with the limits for a Class B digital device, pursuant to part 15 of the FCC Rules. These limits are designed to provide reasonable protection against harmful interference in a residential installation. This equipment generates, uses, and can radiate radio frequency energy and, if not installed and used in accordance with the instructions, may cause harmful interference to radio communications. However, there is no guarantee that interference will not occur in a particular installation. If this equipment does cause harmful interference to radio or television reception, which can be determined by turning the equipment off and on, the user is encouraged to try to correct the interference by one or more of the following measures:

- Reorient or relocate the receiving antenna.

- Increase the separation between the equipment and receiver.
- Connect the equipment into an outlet on a circuit different from that to which the receiver is connected.
- Consult the dealer or an experienced radio/TV technician for help.

Radiation Exposure Statement

This product complies with the FCC portable RF exposure limit set forth for an uncontrolled environment and is safe for intended operation as described in this manual. Further RF exposure reduction can be achieved if the product can be kept as far as possible from the user's body, or set the device to lower output power if such a function is available.

CANADA

This device contains licence-exempt transmitter(s)/receiver(s) that comply with Innovation, Science and Economic Development Canada's licence-exempt RSS(s).

Operation is subject to the following two conditions:

1. This device may not cause interference.
2. This device must accept any interference, including interference that may cause undesired operation of the device.

The digital apparatus complies with Canadian CAN ICES-3 (B)/NMB-3(B).

Radiation Exposure Statement

This device meets the exemption from the routine evaluation limits in section 2.5 of RSS 102, and compliance with RSS 102 RF exposure, users can obtain Canadian information on RF exposure and compliance. This equipment complies with Canada's radiation exposure limits set forth for an uncontrolled environment. This equipment should be installed and operated with a minimum distance of 20 cm between the radiator and your body.

- scentbetter.com
- 1-[602-842-9554](tel:602-842-9554)
- support@scentbetter.com

- 11435 W Buckeye Rd, Suite 104-433 Avondale AZ 85323, United States © 2025
Scent Better Solutions Inc.

FAQs


Q: Can I use other oils with the Scent Better™ Plug In?

A: For an optimal experience, only use Scent Better™ oils with the Plug In to ensure consistent performance and avoid damage to the device.

Q: How often should I change the oil bottle in the Plug In?

A: The frequency of oil changes may vary based on usage. It is recommended to replace the oil bottle when it is empty or when you notice a decrease in fragrance intensity.

Documents / Resources

	SCENT BETTER Plug In Smart Essential Oil Diffuser [pdf] Instruction Manual Plug In Smart Essential Oil Diffuser, Smart Essential Oil Diffuser, Essential Oil Diffuser, Oil Diffuser
---	--

References

- [Scent Better - Aroma & Essential Oil Scent Diffusion For Everyone](#)
- [User Manual](#)

SCENT BETTER
Essential Oil Diffuser, Oil Diffuser, Plug In Smart Essential Oil Diffuser, SCENT BETTER, Smart Essential Oil Diffuser

—Previous Post
[Scent Better Plug In Diffuser Plugin Starter Owner’s Manual](#)

Leave a comment

Your email address will not be published. Required fields are marked *

Comment *

Name

Email

Website

☐ Save my name, email, and website in this browser for the next time I comment.

Post Comment

Search:

Search

[Manuals+](#) | [Upload](#) | [Deep Search](#) | [Privacy Policy](#) | [@manuals.plus](#) | [YouTube](#)

This website is an independent publication and is neither affiliated with nor endorsed by any of the trademark owners. The "Bluetooth®" word mark and logos are registered trademarks owned by Bluetooth SIG, Inc. The "Wi-Fi®" word mark and logos are registered trademarks owned by the Wi-Fi Alliance. Any use of these marks on this website does not imply any affiliation with or endorsement.