



ScanSnap iX1300 Duplex Scanner User Manual

[Home](#) » [ScanSnap](#) » ScanSnap iX1300 Duplex Scanner User Manual 

Contents

- [1 ScanSnap iX1300 Duplex Scanner](#)
- [2 SETUP](#)
- [3 Three Product Categories](#)
- [4 U-turn/Return Scan](#)
- [5 Windows/Mac](#)
- [6 TROUBLESHOOTING](#)
- [7 FREQUENTLY ASKED QUESTIONS](#)
- [8 VIDEO – PRODUCT OVERVIEW](#)
- [9 Related Posts](#)

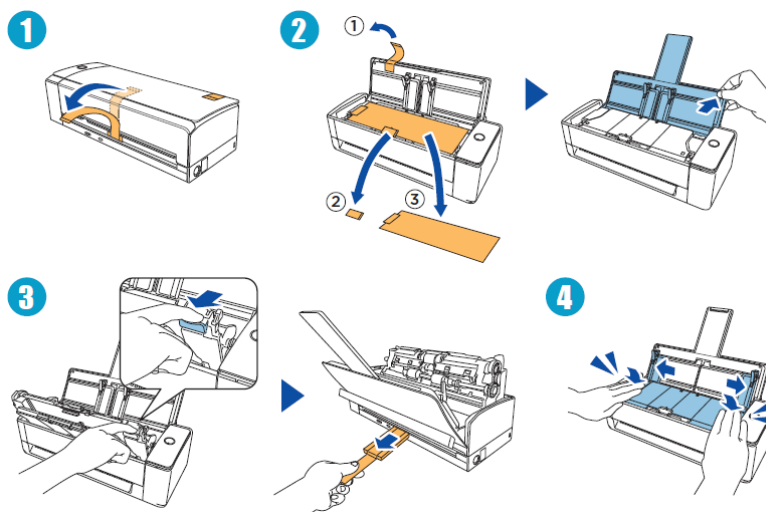


ScanSnap iX1300 Duplex Scanner



SETUP

Hardware Setup



Unpacking the Scanner: Begin by unpacking the ScanSnap iX1300 and ensure that all components, including the power cable, USB cable, and documentation, are present.

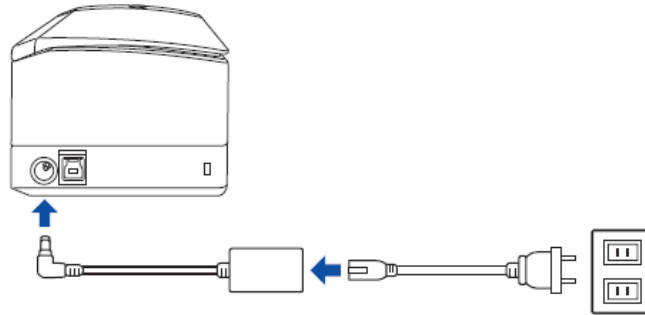
Placing the Scanner: Select a suitable location for the scanner near your computer, ensuring sufficient space for the paper output tray and easy access to the control panel.

Connecting the Scanner:

- Connect the power cable to the scanner's power port.
- Plug the other end of the power cable into a power outlet.
- Attach one end of the USB cable to the scanner's USB port.

- Connect the remaining end of the USB cable to an available USB port on your computer.

Powering On the Scanner: Activate the scanner by pressing its power button. The scanner should power up, with indicator lights illuminating to signal its readiness.



Software Installation

Installing Software:

- If your scanner comes with an installation CD, insert it into your computer's CD/DVD drive. Alternatively, you can download the latest software and drivers from the Fujitsu website if your computer lacks an optical drive.
- Follow the on-screen instructions to launch the installation program.

Driver Installation:

- Throughout the installation process, you will be prompted to install drivers for the scanner. Follow these prompts to complete the driver installation.

Software Configuration:

- Once the installation is finalized, open the ScanSnap software on your computer.
- Configure your preferred settings, including scan resolution, file format, destination folders, and other customization options.

Testing a Scan:

- Place a test document or image in the scanner's paper tray or feeder.
- Utilize the software to initiate a test scan to ensure that the scanned document appears correctly on your computer.

Calibration

• Calibrating the Scanner:

Certain scanners may require calibration. If the software prompts you or if you encounter scanning issues, adhere to the calibration instructions as provided in the user manual or software documentation.

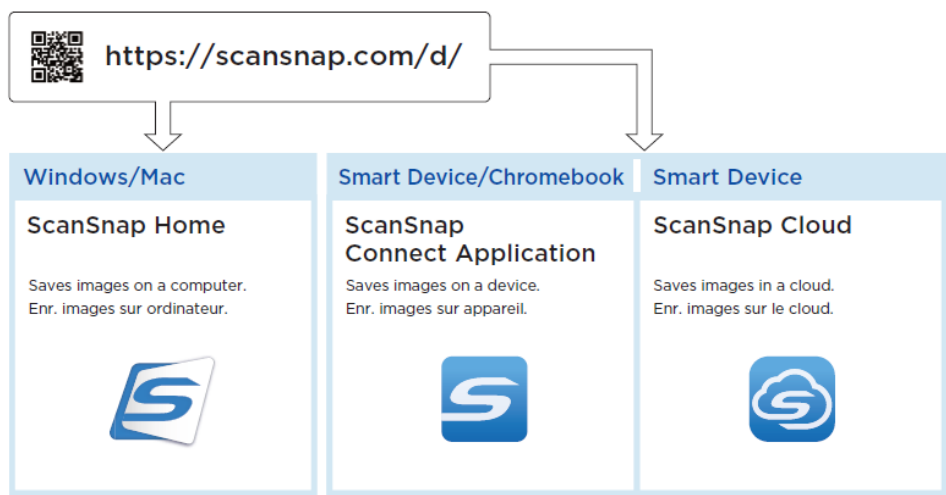
• Scanner Setup Completion:

Your ScanSnap iX1300 Duplex Scanner is now successfully installed and ready for operation. You can commence scanning various documents, photos, and other materials by loading them into the scanner and using the ScanSnap software to trigger the scanning process.

Three Product Categories

URL & QR Code:

<https://scansnap.com/d/>



Windows/Mac

- ScanSnap Home
- Saves images on a computer.

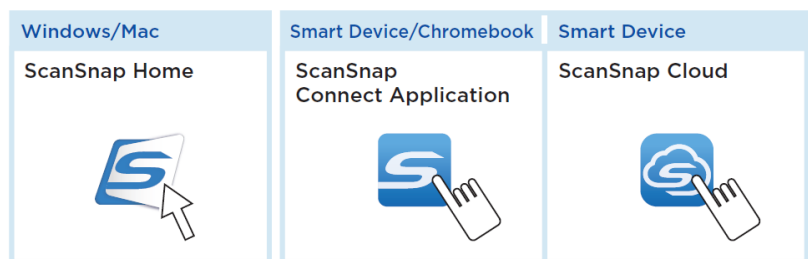
Smart Device/Chromebook

- ScanSnap Connect Application
- Saves images on a device.

Smart Device

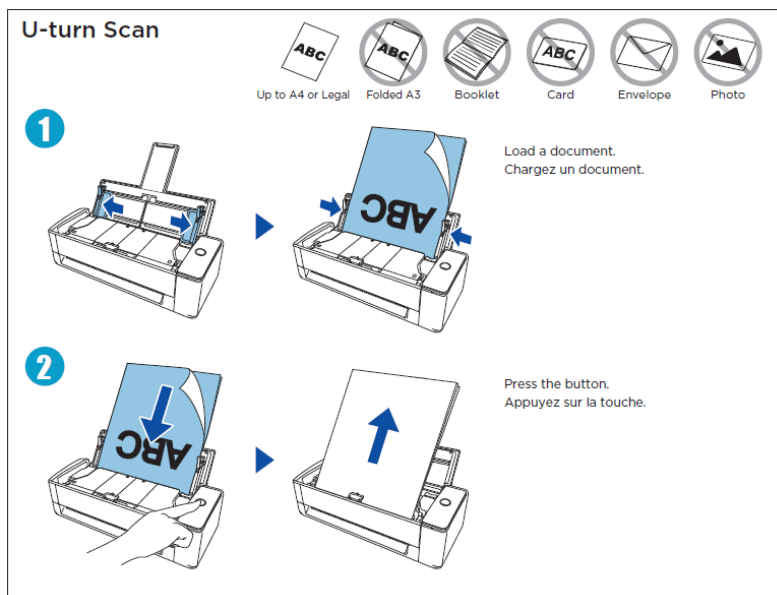
- ScanSnap Cloud
- Saves images in a cloud.

Follow the setup steps in the window that appears in the software used.

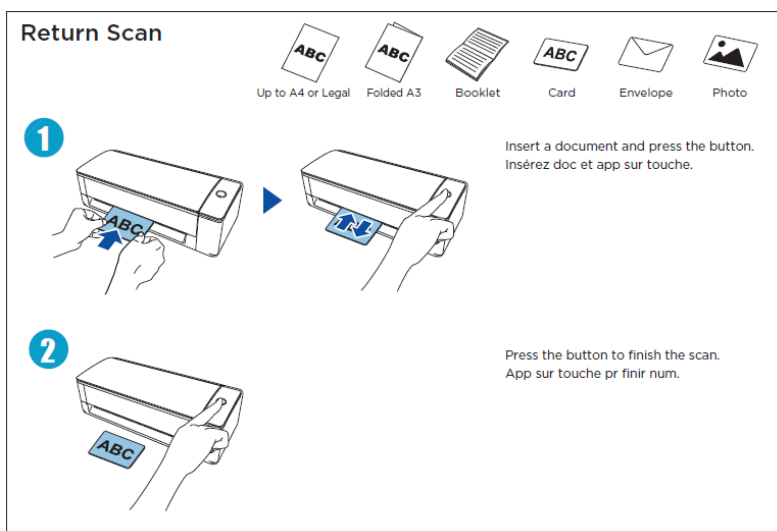


U-turn/Return Scan

- Load a document.
- Press the button.



- Insert a document and press the button.
- Press the button to finish the scan.



Windows/Mac

ScanSnap Home

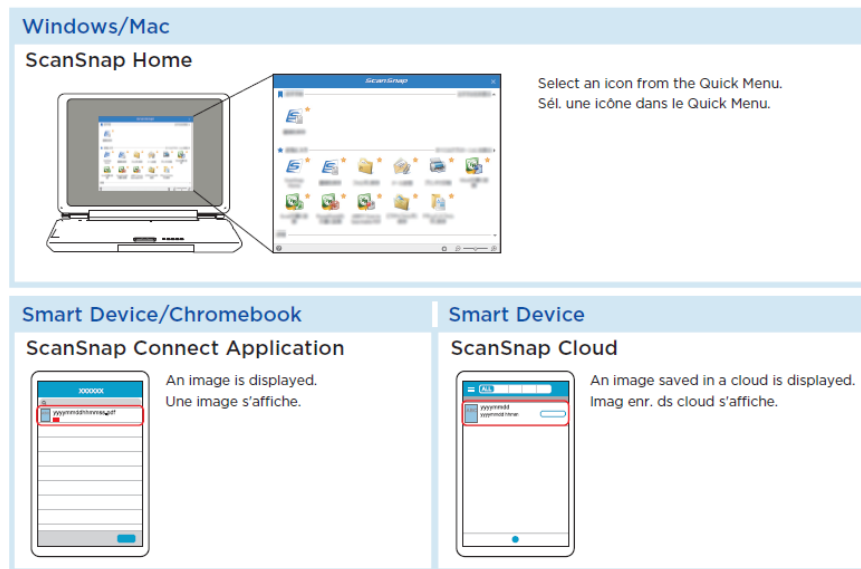
- Select an icon from the Quick Menu.

Smart Device/Chromebook

- ScanSnap Connect Application
 - An image is displayed.

Smart Device

- ScanSnap Cloud
 - An image saved in a cloud is displayed



For details about the setup procedure when you use ScanSnap Home and ScanSnap Manager, refer to the URL.

<https://scansnap.com/gs/>



For further information, refer to the manuals or ScanSnap Support Site.

<https://scansnap.fujitsu.com/g-support/en/>



TROUBLESHOOTING

Verify Power and Connections:

- Ensure that the scanner is correctly connected to both the power source and your computer.
- Confirm that the power indicator on the scanner is illuminated.
- If the scanner relies on a USB connection, double-check the USB link for a secure connection.

Software and Driver Checks:

- Validate the proper installation of ScanSnap software and drivers on your computer.
- Should you encounter software-related errors or crashes, consider reinstallation as a potential solution.

Paper Jams:

- In the event of a paper jam, cautiously open the scanner cover and remove the jammed paper.
- To prevent future jams, ensure that paper is correctly loaded in the feeder.

Calibration:

- Certain scanners may require periodic calibration. Consult the user manual for calibration instructions and follow them if necessary.

Scanning Problems:

- If the scanner produces incomplete or distorted scans, confirm that the scanner glass and feeder are clean and devoid of debris.
- Examine the scan settings within the software to ensure they are appropriately configured.

Sluggish Scanning Speed:

- Slow scanning may be linked to high-resolution settings. If speed is a concern, adjust the resolution to a lower setting.

Connectivity Issues:

If the scanner is not detected by your computer, consider these actions:

- Disconnect and then reconnect the USB cable.
- Test the scanner on an alternate USB port.
- Reboot your computer.
- Update the scanner drivers.

Software Glitches:

If the ScanSnap software exhibits errors or crashes, try the following:

- Update the software to the most recent version.
- Uninstall and subsequently reinstall the software.
- Check for software updates and patches.

Firmware Updates:

- Visit the manufacturer's website to verify the availability of firmware updates for the scanner. Maintaining up-to-date firmware can resolve various issues.

Seek Support:

- If you encounter persistent challenges in resolving the issue, reach out to the manufacturer's customer support for expert guidance. They can provide specific solutions and advice for scanner-related problems.

FREQUENTLY ASKED QUESTIONS

What is the ScanSnap iX1300 Duplex Scanner?

The ScanSnap iX1300 is a duplex scanner designed for efficient document scanning. It is known for its compact design, high-speed scanning capabilities, and compatibility with various document types.

What distinguishes the ScanSnap iX1300 Scanner from other scanners?

The ScanSnap iX1300 stands out for its compact size, duplex scanning capabilities, wireless connectivity, and compatibility with both Windows and Mac operating systems, making it a versatile document scanning solution.

What is the maximum scanning resolution of the ScanSnap iX1300 Scanner?

The ScanSnap iX1300 typically offers a maximum optical scanning resolution of 600 dpi, ensuring sharp and detailed scans for documents and images.

What types of documents can be scanned with the ScanSnap iX1300?

The ScanSnap iX1300 scanner can scan a wide range of documents, including standard letter-sized pages, business cards, receipts, and various document types, making it versatile for different scanning needs.

Is the ScanSnap iX1300 Scanner compatible with Windows and Mac operating systems?

Yes, the ScanSnap iX1300 scanner is typically compatible with both Windows and Mac operating systems, ensuring broad compatibility with various computer setups.

Does the ScanSnap iX1300 Scanner support wireless scanning?

Yes, the ScanSnap iX1300 often features wireless scanning capabilities, allowing users to scan documents to their mobile devices and computers without the need for physical connections.

What is the scanning speed of the ScanSnap iX1300 Scanner?

The scanning speed of the ScanSnap iX1300 can vary depending on the settings, but it is designed for quick and efficient scanning, making it suitable for both personal and professional use.

Does the ScanSnap iX1300 Scanner support duplex scanning?

Yes, the ScanSnap iX1300 typically supports duplex scanning, allowing for scanning of both sides of documents simultaneously, which improves scanning efficiency.

What is the price range of the ScanSnap iX1300 Duplex Scanner?

The ScanSnap iX1300 typically falls within a competitive price range for duplex scanners, offering an affordable option for individuals and businesses seeking efficient scanning solutions.

What is the warranty period for the ScanSnap iX1300 Scanner?

Warranty periods for the ScanSnap iX1300 scanner range from 1 year to 2 years.

Can the ScanSnap iX1300 Scanner scan directly to cloud storage services?

Yes, the ScanSnap iX1300 often supports direct scanning to cloud storage services, enabling users to save scanned documents to the cloud for easy access and sharing.

Where can I purchase the ScanSnap iX1300 Duplex Scanner?

You can typically purchase the ScanSnap iX1300 Duplex Scanner from authorized office equipment retailers, electronics stores, online marketplaces, or directly from the manufacturer to ensure you receive a genuine product.

VIDEO – PRODUCT OVERVIEW



[Download the PDF link ScanSnap iX1300 Duplex Scanner User Manual](#)
[Scanner-User-Manual.mp4](#)