



# SW 1 Rust Scandtap Bathroom Concepts Mirror Instruction Manual

[Home](#) » [SCANDTAP](#) » SW 1 Rust Scandtap Bathroom Concepts Mirror Instruction Manual 

## Contents

- [1 SW 1 Rust Scandtap Bathroom Concepts Mirror](#)
- [2 Product Information](#)
- [3 Product Usage Instructions](#)
- [4 Maintenance](#)
- [5 Parts & Tools](#)
- [6 Dimension](#)
- [7 Installation](#)
- [8 Maintenance Solid Surface](#)
- [9 Documents / Resources](#)
  - [9.1 References](#)

SCANDTAP  
BATHROOM CONCEPTS

**SW 1 Rust Scandtap Bathroom Concepts Mirror**



## Product Information

Product Name: Mirror

Model Number: 46201

RSK Number: 8901127

Edition Date: 2022-01-14

## Components

- 1 Mirror
- 3 Installation Brackets
- 1 Polishing Pad

## Languages Available in the Manual

- Swedish (SV)
- Norwegian (NO)
- Danish (DK)
- Finnish (FI)
- English (EN)
- German (DE)

## Product Usage Instructions

### Installation

1. Measure the desired height of the mirror.
2. Select the correct method for installing screws into walls:
  - A: For wooden studs.
  - B: For concrete walls.
3. Screw on the installation bracket according to step 2.
4. Pull off the protective film from the mirror's adhesive strips.
5. Ensure that the mirror is positioned straight. Hang it over the installation bracket and push the mirror towards the wall so that the adhesive strips attach.
6. Clean the frame with soap and a sponge. In case of scratches and tougher stains, use the included polishing pad. Note: Never use the abrasive pad on the mirror glass.

### Maintenance

#### Solid Surface Maintenance:

- Avoid contact with the following substances:
  - Chemicals that may damage Solid Surface.
  - Colored substances such as cosmetics for extended periods.
- Cleaning:
  - Regularly clean the surface with a soft cloth and lukewarm water. If necessary, use soap. Rinse with clean water and dry with a soft cloth.
- Removing Scratches or Discolorations:
  - Start by cleaning the surface with a soft cloth and a mildly abrasive cleaning agent.
  - Rinse with clean water and dry with a soft cloth.
  - If scratches or discolorations remain, apply a sanding pad/sandpaper with a grade between P800-P1000

on the affected area and polish with even circular movements.

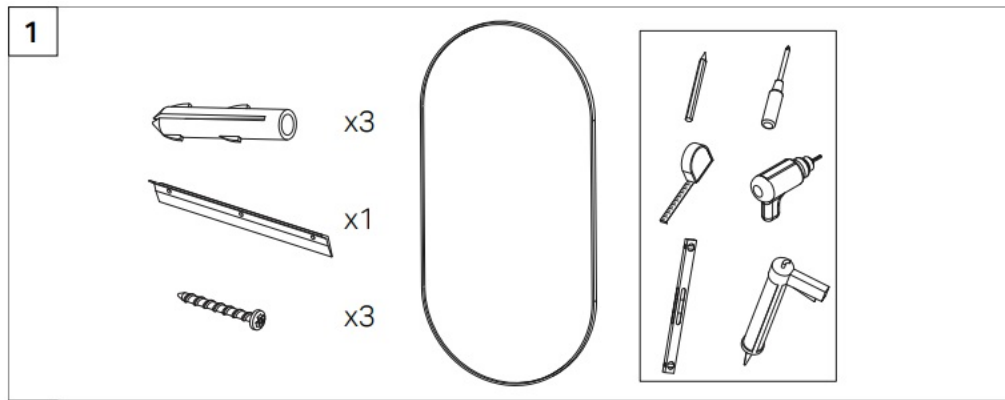
- In case of deeper scratches, it may be necessary to first polish the surface with a rougher grade of sanding pad.

If you have any other questions, please contact your retailer or visit [www.scandtap.com](http://www.scandtap.com)

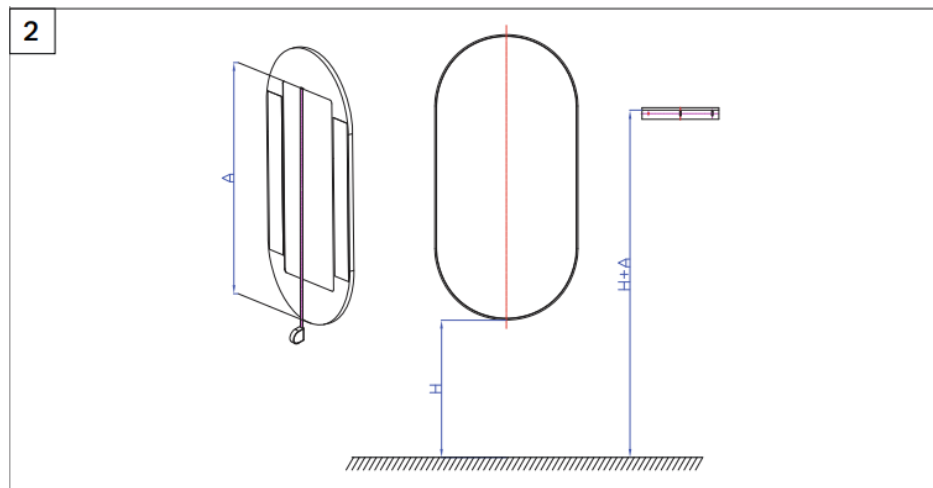
Contact Information:

- Phone: +46 35 260 75 80
- Email: [info@scandtap.com](mailto:info@scandtap.com)
- Website: [www.scandtap.com](http://www.scandtap.com)

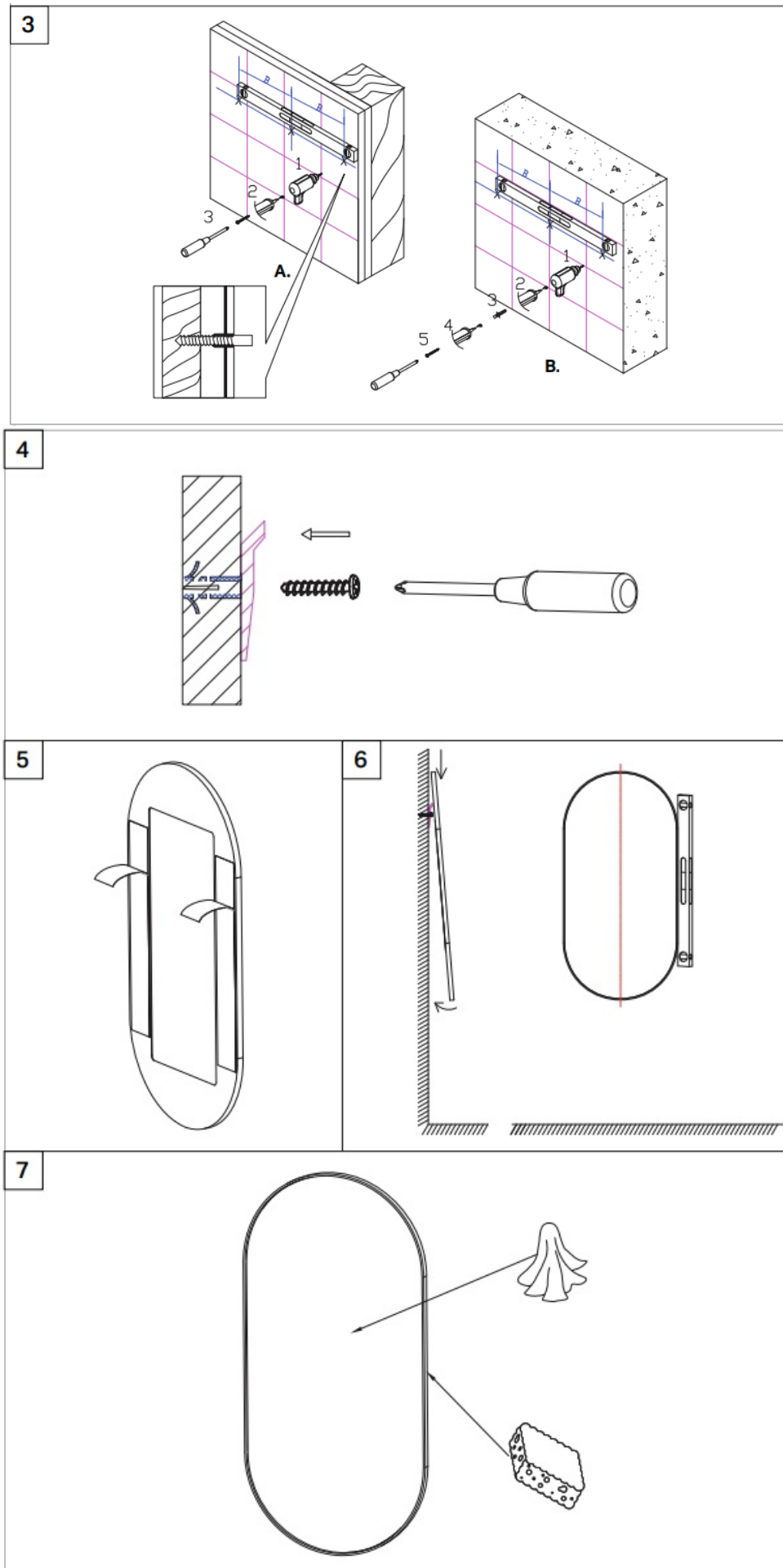
## Parts & Tools



## Dimension



## Installation



2. Measure the desired height of the mirror.
3. Correct method for installing screws into walls. A: wooden studs. B: concrete
4. Screw on the installation bracket according to 3.
5. Pull off the protective film from the mirror's adhesive strips.
6. Ensure that the mirror is positioned straight. Hang it over the installation bracket and push the mirror towards the wall so that the adhesive strips attach.
7. Clean the frame with soap and a sponge. In case of scratches and tougher stains, the included polishing pad can be used. Note! Never use the abrasive pad on the mirror glass.

## **Maintenance Solid Surface**

Avoid that the material comes into contact with the following:

- Acetone
- Acids and cleaning agents that contain Chloromethane
- Petroleum-based cleaning agents
- Solvents, Thinner
- Drain cleaners
- H<sub>2</sub>O >70°C

Also avoid that the surface of the basin comes into contact with coloured substances such as cosmetics for longer durations. In case of such contact, rinse with lukewarm water and, if necessary, soap.

### **Cleaning:**

Clean the surface regularly with a soft cloth and lukewarm water. If necessary, use soap. Afterwards, rinse with clean water and then dry the basin with a soft cloth.

### **In case of scratches or discolorations:**

Scratches and discolorations can under normal circumstances be removed simply by polishing the affected surface with a sanding pad/sandpaper with a grade of P800-P1000.\*

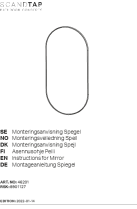
1. Start by cleaning the the surface with a soft cloth and a mildly abrasive cleaning agent.
2. Rinse with clean water and dry with a soft cloth.
3. If the scratch or discolouration remain, apply a sanding pad/sandpaper with a grade between P800-P1000 on the affected area and polish with even circular movements.
4. In case of deeper scratches, it may be necessary to first polish the surface with a rougher grade of sanding pad/ sandpaper, and then switch to increasingly finer grades. Start with P240, then switch to P400 and finally P800-P1000.
5. Lastly, repeat step 1–2 for final polishing.

Sanding pad is available from Scandtap with article number 81001. For more information, visit [scandtap.com](https://scandtap.com).



Scandtap AB, Olofsdalsvägen 21, 302 41 Halmstad, Sweden  
+46 35 260 75 80, [info@scandtap.com](mailto:info@scandtap.com), [www.scandtap.com](http://www.scandtap.com)

## Documents / Resources

	<p><a href="#">SCANDTAP SW 1 Rust Scandtap Bathroom Concepts Mirror</a> [pdf] Instruction Manual SW 1 Rust Scandtap Bathroom Concepts Mirror, SW 1, Rust Scandtap Bathroom Concepts Mirror, Bathroom Concepts Mirror, Concepts Mirror, Mirror</p>
---	---

## References

-  [Homepage - Primy - Scandtap Bathroom Concepts](#)
-  [Homepage - Primy - Scandtap Bathroom Concepts](#)