



SCAN PRODUCTS 20240102 Luna Low Profile Instruction Manual

[Home](#) » [Scan PRODUCTS](#) » SCAN PRODUCTS 20240102 Luna Low Profile Instruction Manual 

Contents

- [1 SCAN PRODUCTS 20240102 Luna Low Profile](#)
- [2 Product Usage Instructions](#)
- [3 Installation instructions](#)
- [4 Documents / Resources](#)
 - [4.1 References](#)
- [5 Related Posts](#)



SCAN PRODUCTS 20240102 Luna Low Profile



Specifications

- Product Name: Luna Low profile 2.0
- Power: 5.9W
- Dimensions: 120mm x 65mm x 68mm
- Installation: Indoor & Outdoor
- Tool Required: Torx T10

Product Usage Instructions

Installation

1. Turn off the power supply before starting the installation process.
2. Identify the components: Flex tube, Cable, Torx T10, etc.
3. Follow the provided mounting instructions to secure the Luna Low profile 2.0 in place.
4. Ensure proper alignment and connection of all components according to the manual.
5. Turn on the power supply once the installation is complete.

Troubleshooting

If you encounter any issues with the product, refer to the troubleshooting section in the manual or contact customer support for assistance.

FAQ:

- **Q: Can the Luna Low profile 2.0 be used outdoors?**

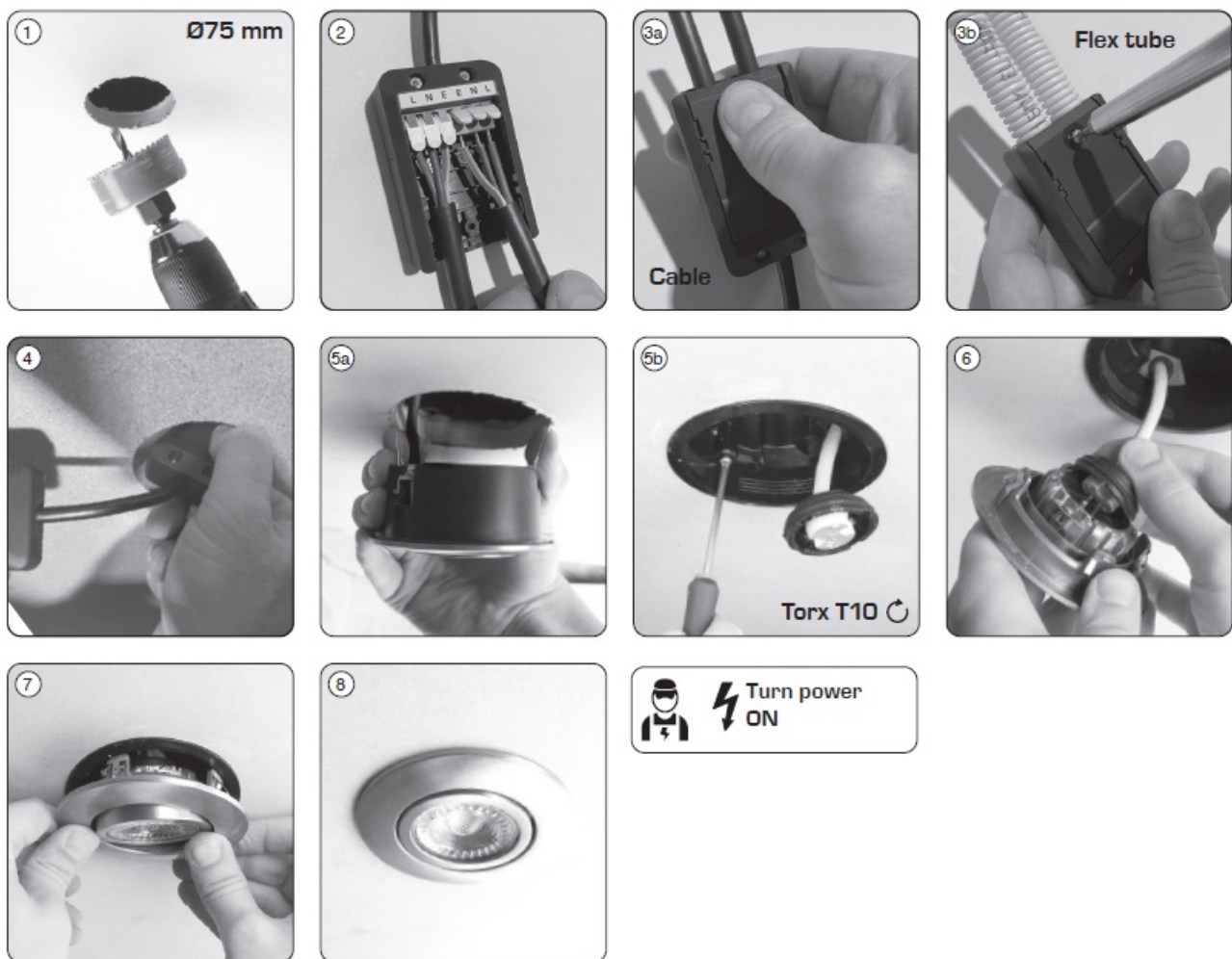
A: Yes, the Luna Low profile 2.0 is suitable for both indoor and outdoor use.

- **Q: What tool is required for installation?**

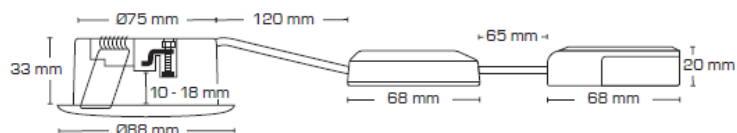
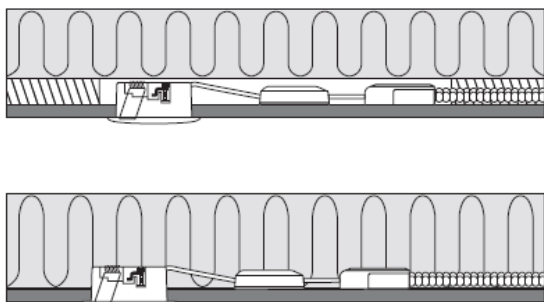
A: The installation requires a Torx T10 tool for securing the components in place.

Installation instructions






DIMENSION



We refer to our website www.scan-products.com regarding: products, documentation, approvals, dimmer overview, etc.

Scan Products D T ApS www.scan-products.com

Documents / Resources

	<p>SCAN PRODUCTS 20240102 Luna Low Profile [pdf] Instruction Manual 20240102, 10601, 20240102 Luna Low Profile, 20240102, Luna Low Profile, Low Profile, Profile</p>
--	---

References

-  [Scan Products - Kvalitets belysning](#)
- [User Manual](#)

Manuals+, [Privacy Policy](#)

This website is an independent publication and is neither affiliated with nor endorsed by any of the trademark owners. The "Bluetooth®" word mark and logos are registered trademarks owned by Bluetooth SIG, Inc. The "Wi-Fi®" word mark and logos are registered trademarks owned by the Wi-Fi Alliance. Any use of these marks on this website does not imply any affiliation with or endorsement.