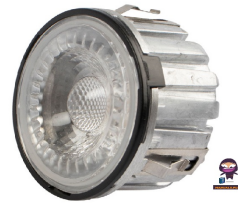



12621
Low
Profile



SCAN PRODUCTS 12621 Low Profile Installation Guide

[Home](#) » [Scan PRODUCTS](#) » SCAN PRODUCTS 12621 Low Profile Installation Guide 

Contents

- [1 SCAN PRODUCTS 12621 Low Profile](#)
- [2 Product Specifications:](#)
- [3 Product Usage Instructions:](#)
- [4 Frequently Asked Questions \(FAQ\):](#)
- [5 Documents / Resources](#)
 - [5.1 References](#)



SCAN PRODUCTS 12621 Low Profile

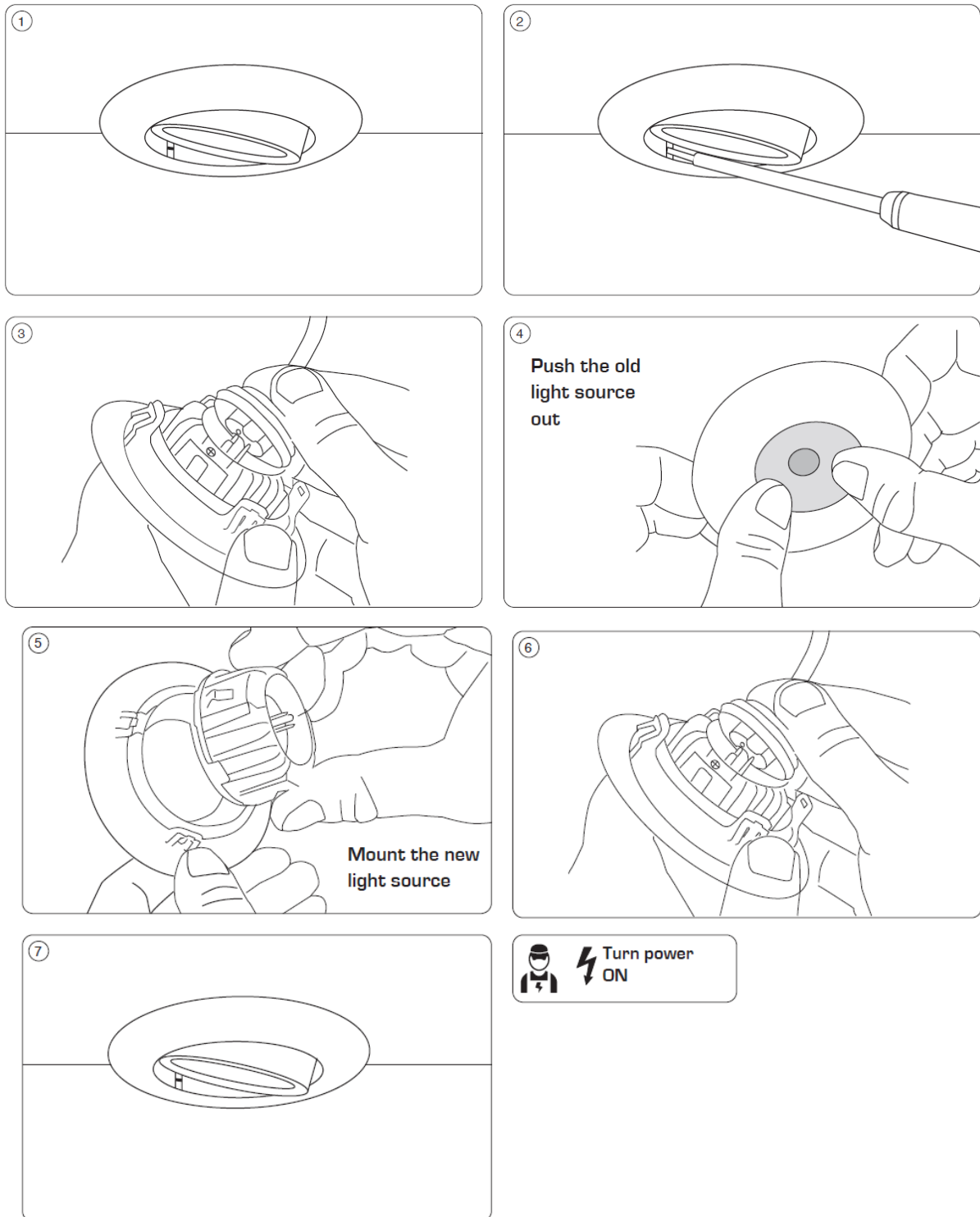


Product Specifications:

- Product Name: Luna Low Profile
- Manufacturer: Scan Products D T ApS
- Model Number: Not specified
- Power: Requires external power source
- Light Source: Replaceable
- Dimensions: Low profile design

Product Usage Instructions:

1. Turn off the power source to ensure safety during the replacement process.
2. Locate the old light source that needs to be replaced.
3. Push the old light source out carefully to remove it from its position.
4. Prepare the new light source for mounting.
5. Mount the new light source securely in the designated spot.
6. After ensuring proper placement, turn the power back on.



Frequently Asked Questions (FAQ):

Q: How often should the light source be replaced?

A: The frequency of light source replacement may vary depending on usage and the type of light source used. It is recommended to refer to the manufacturer's guidelines for specific recommendations.


Q: Can any type of light source be used as a replacement?

A: It is advisable to use a compatible light source recommended by the manufacturer to ensure proper functioning and safety of the product.

Q: What should I do if the new light source does not work after replacement?

A: Double-check the installation of the new light source, ensure it is securely mounted and connected to the power source. If issues persist, contact customer support for further assistance.

Documents / Resources

	<p>SCAN PRODUCTS 12621 Low Profile [pdf] Installation Guide 12621 Low Profile, 12621, Low Profile, Profile</p>
---	---

References

-  [Scan Products - Kvalitets belysning](#)
- [User Manual](#)

Manuals+, Privacy Policy

This website is an independent publication and is neither affiliated with nor endorsed by any of the trademark owners. The "Bluetooth®" word mark and logos are registered trademarks owned by Bluetooth SIG, Inc. The "Wi-Fi®" word mark and logos are registered trademarks owned by the Wi-Fi Alliance. Any use of these marks on this website does not imply any affiliation with or endorsement.