

SCALEXTRIC
C8336 Wireless
Controller



SCALEXTRIC C8336 Wireless Controller Instruction Manual

[Home](#) » [SCALEXTRIC](#) » SCALEXTRIC C8336 Wireless Controller Instruction Manual 

Contents

- 1 [SCALEXTRIC C8336 Wireless Controller](#)
 - 1.1 [Product Usage Instructions:](#)
- 2 [Smart-Device Control](#)
- 3 [Hand Controller Control](#)
- 4 [REGULATORY COMPLIANCE INFORMATION](#)
- 5 [FAQ](#)
- 6 [Documents / Resources](#)
 - 6.1 [References](#)
- 7 [Related Posts](#)



SCALEXTRIC C8336 Wireless Controller



Product Specifications:

- **Product Name:** Wireless Controller Accessory Pack
- **Manufacturer:** Hornby Hobbies Ltd
- **Manufactured Address:** Westwood, Margate, Kent, CT9 4JX, UK
- **EU Authorised Representative:** Hornby Italia SRL, Castel Mella (BS), Italy, 25030
- **Printed in:** China

Product Usage Instructions:

Smart-Device Control:

Connect the smart device to the controller.

Hand Controller Control:

1. Turn on the hand controller.
2. Connect the hand controller to the device.

Select Throttle Profile:

Use the hand controller to select the desired throttle profile.

Regulatory Compliance Information:

- You are cautioned that any changes or modifications not approved by the responsible party could void your authority to operate the equipment.
- This device complies with Part 15 of the FCC Rules. It must not cause harmful interference and must accept any interference received.
- The equipment should be installed and operated with a minimum distance of 20cm between the radiator and your body.

CE Compliance:

The CE marking indicates compliance with applicable Council Directives of the European Union.

Warning:

This product must be powered by a LPS power supply.

Manufactured By:

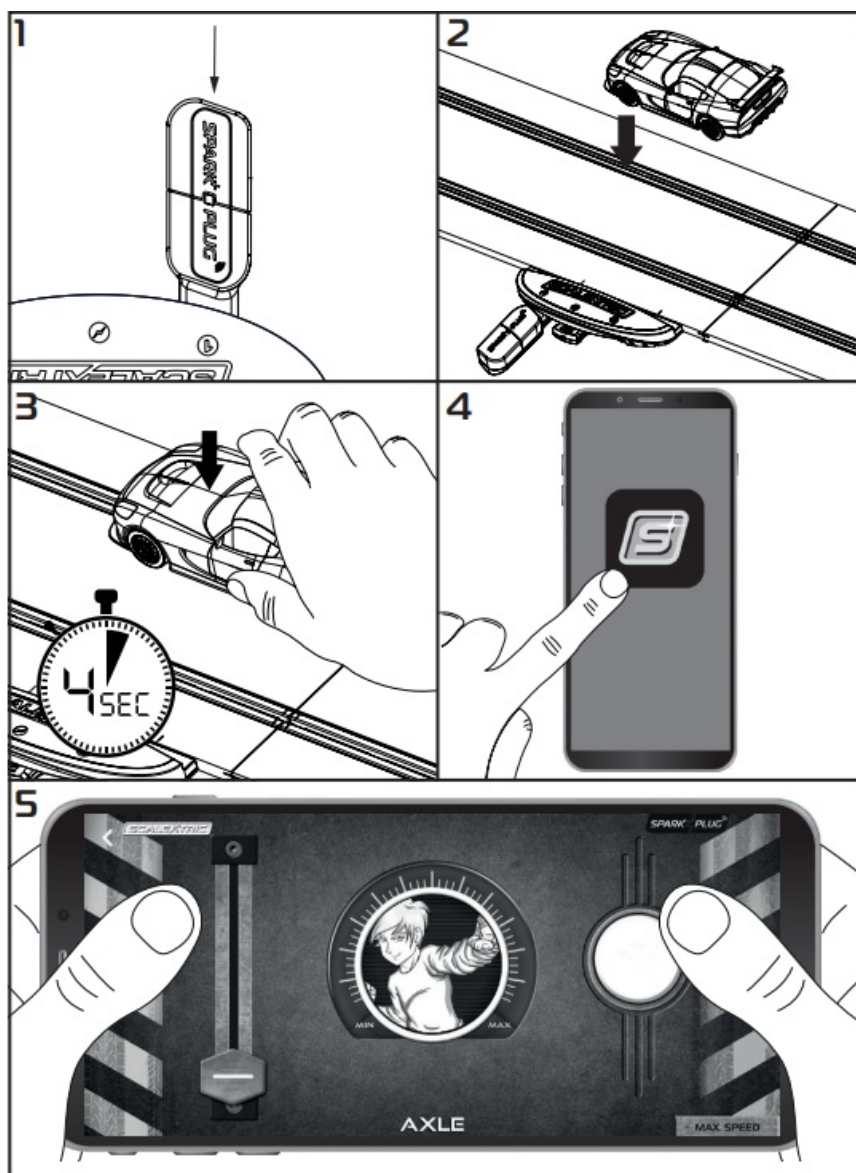
Hornby Hobbies Ltd, Westwood, Margate, Kent, CT9 4JX, UK

EU Authorised Representative:

Hornby Italia SRL Viale dei Caduti, 52/A6, Castel Mella (BS), Italy, 25030

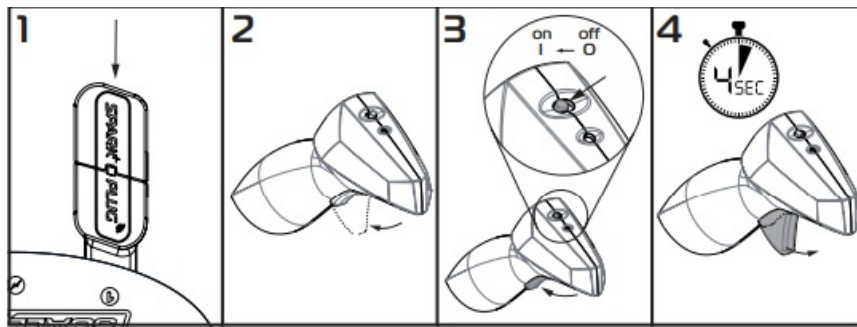
Smart-Device Control

Connect

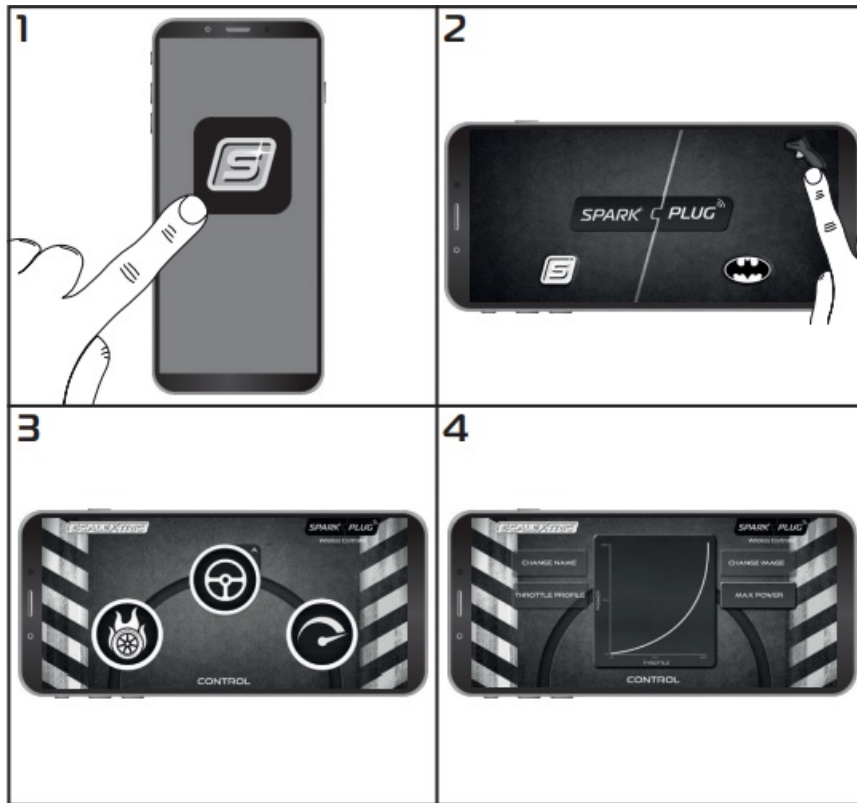


Hand Controller Control

Connect



Select Throttle Profile



REGULATORY COMPLIANCE INFORMATION

FCC Requirements

Note: This equipment has been tested and found to comply with the limits for a Class B digital device, pursuant to Part 15 of the FCC Rules. These limits are designed to provide reasonable protection against harmful interference in a residential installation. This equipment generates, uses, and can radiate radio frequency energy, and if not installed and used in accordance with the instructions, may cause harmful interference to radio communications. However, there is no guarantee that interference will not occur in a particular installation. If this equipment does cause harmful interference to radio or television reception, which can be determined by turning the equipment off and on, the user is encouraged to try to correct the interference by one or more of the following measures:

- Reorient or relocate the receiving antenna.
- Increase the separation between the equipment and the receiver.
- Connect the equipment into an outlet on a circuit different from that to which the receiver is connected.
- Consult the dealer or an experienced radio/TV technician for help.

You are cautioned that changes or modifications not expressly approved by the party responsible for compliance could void your authority to operate the equipment.

This device complies with Part 15 of the FCC Rules. Operation is subject to the following two conditions:

1. this device may not cause harmful interference, and
2. this device must accept any interference received, including interference that may cause undesired operation.

This device complies with Innovation, Science and Economic Development Canada's license-exempt RSSs. Operation is subject to the following two conditions:

1. This device may not cause interference; and
2. This device must accept any interference, including interference that may cause undesired operation of the device.

Spark Plug Dongle

- FCC ID 2ACUF-SA00528
- IC 12075A-SA00528

ICES-003/NMB-003

Cet appareil numérique de la classe B est conforme à la norme ICES-003 du Canada.

Spark Plug Dongle FCC Radiation Exposure Statement

This equipment complies with FCC radiation exposure limits set forth for an uncontrolled environment. This equipment should be installed and operated with a minimum distance of 20cm between the radiator & your body. This transmitter must not be co-located or operating in conjunction with any other antenna or transmitter.

Spark Plug Hand Throttle

- FCC ID 2ACUF-C8336
- IC 12075A-C8336

CE Compliance For Europe

Marking by the CE symbol indicates compliance of this system to the applicable Council Directives of the European Union, including the Radio equipment Directive 2014/53/EU , EMC equipment Directive 2014/30/EU, LVD Directive 2014/35/EU

Warning

This product must be powered by a LPS power supply.

- **Manufacturer name** – Hornby Hobbies Ltd
- **Model Number** – C8333 – SA-00528
- **Input parameter** – 15V DC 1.2A
- **Product dimensions** – L 80mm X W 25mm X D 12mm
- **Operating conditions** – 0 C to +35 C (for indoor use only)
- **Manufacturer name** – Hornby Hobbies Ltd
- **Model Number** – C8336 – SSA-00189, SSA-00190
- **Input parameter** – 2 AA Batteries (3V DC)
- **Product dimensions** – L 183mm X W 45mm X D 78mm

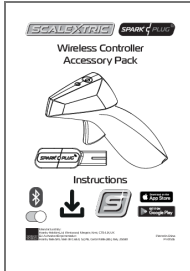
- **Operating conditions** – 0 C to +35 C (for indoor use only)

FAQ

Q: What should I do if the hand controller is not connecting to the device?

A: Ensure that the hand controller is turned on and within range of the device. Try resetting both the controller and the device before attempting to reconnect.

Documents / Resources



[SCALEXTRIC C8336 Wireless Controller](#) [pdf] Instruction Manual
2ACUF-C8336, C8336 Wireless Controller, C8336, Wireless Controller, Controller

References

- [User Manual](#)

Manuals+, Privacy Policy

This website is an independent publication and is neither affiliated with nor endorsed by any of the trademark owners. The "Bluetooth®" word mark and logos are registered trademarks owned by Bluetooth SIG, Inc. The "Wi-Fi®" word mark and logos are registered trademarks owned by the Wi-Fi Alliance. Any use of these marks on this website does not imply any affiliation with or endorsement.