



SCALE-TEC Point Scale Indicator User Guide

[Home](#) » [SCALE-TEC](#) » SCALE-TEC Point Scale Indicator User Guide 

SCALE-TEC Point Scale Indicator User Guide



POINT®

Quick Start Guide

7602008 - REVD

QUICK START GUIDE:

Use this Quick Start Guide to help you get set up and running immediately. Refer to our online help center at scale-tec.com for more information on operating your POINT scale indicator.

Contents

- 1 PACKAGE CONTENTS
- 2 TOOLS REQUIRED
- 3 PRODUCT SETUP
- 4 Documents / Resources
 - 4.1 References
- 5 Related Posts

PACKAGE CONTENTS

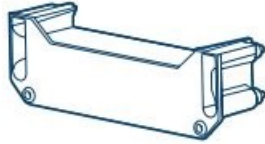
① Quick Start Guide



② POINT Unit



③ Adapter Module



TOOLS REQUIRED

① #4 Phillips Screwdriver



② Android 7.0 or iOS 12.2 Device



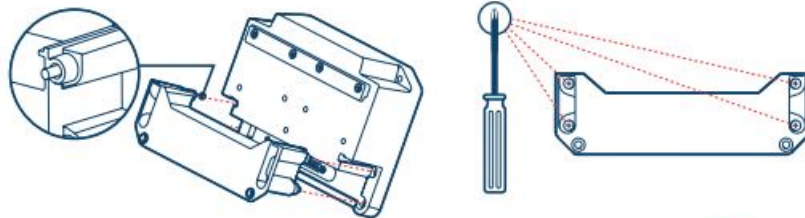
*NOTE

POINT mobile app and internet connectivity to Android or iOS device is required for initial set up. However, internet service (Cellular data/WiFi) is not needed to function in the field.

PRODUCT SETUP

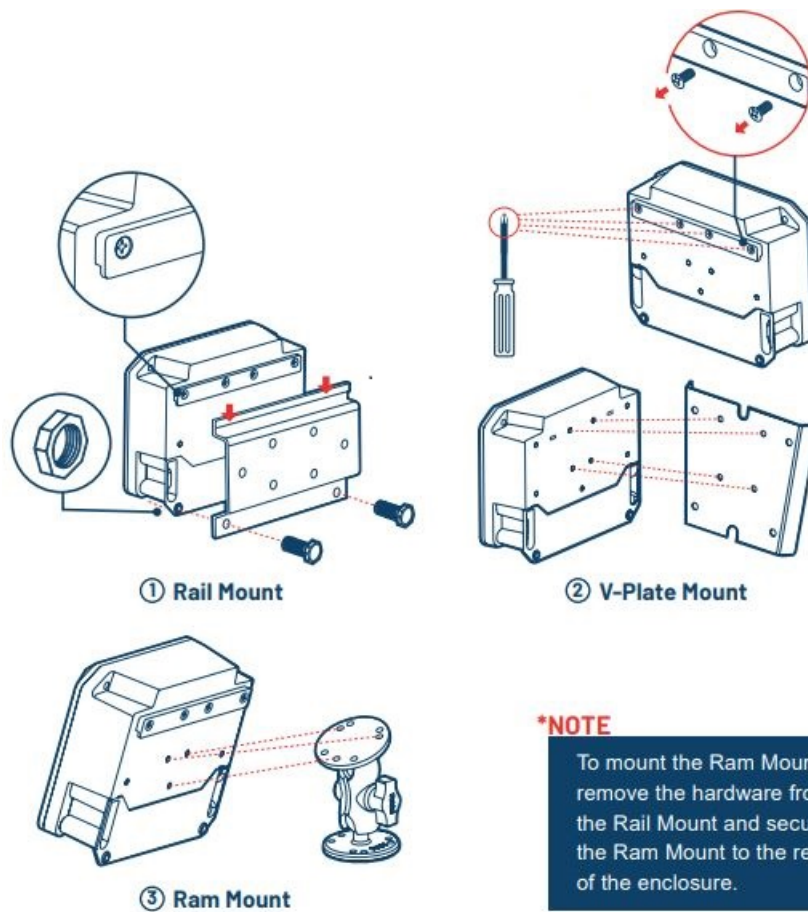
(1) ASSEMBLE UNITS

1. Remove both the POINT unit and adapter module from packaging. Slide the adapter module into the rails located on the back and bottom of the POINT unit.
2. When the adapter is flush and in place, use a #4 Phillips screwdriver and tighten the 4 captive screws.



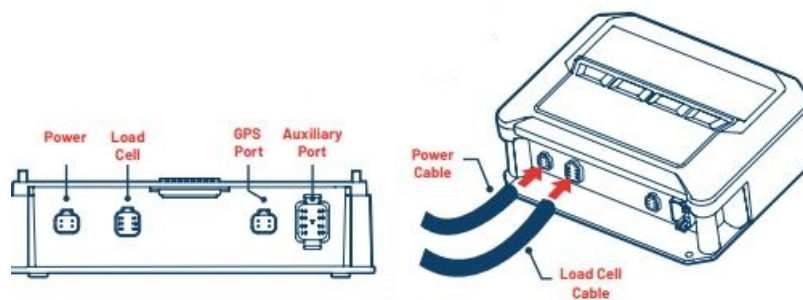
(2) MOUNTING OPTIONS

The POINT unit mounts to three different systems: Rail Mount, V-Plate Mount & Ram Mount. Refer to the illustration below that matches the mount you have.

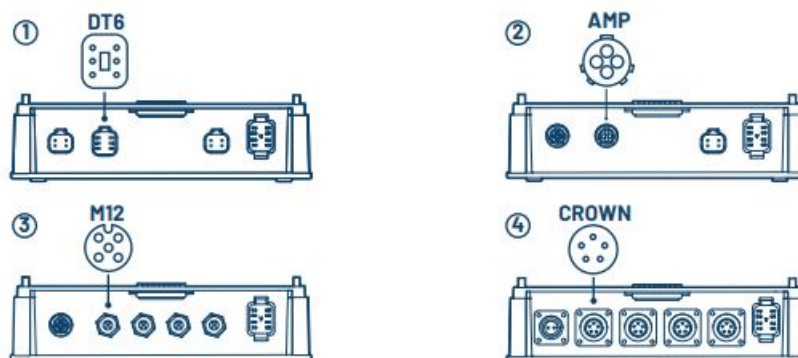


(3) CABLE CONNECTIONS

Plug power and load cell cables into the Adapter Module. Refer to the connector cable that matches your specific adapter module (as indicated on packaging). Do not turn on the unit until you have completed Step 4.

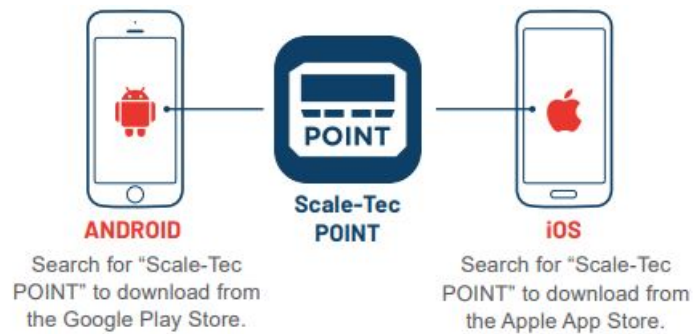


ADAPTER MODULE LOAD CELL CONNECTOR CONFIGURATIONS



(4) APP DOWNLOAD

Your mobile device must be connected to the internet to complete this step. Download the Scale-Tec POINT mobile app. Register and log into the app.

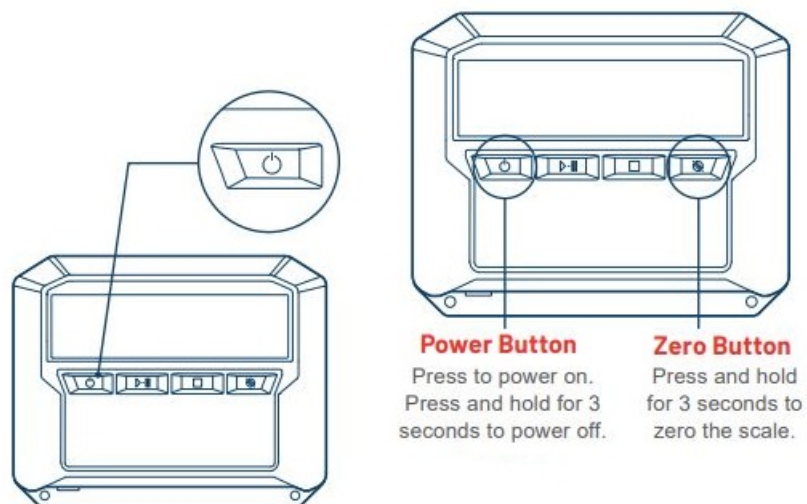


[Android](#)
[Apple App Store.](#)

(5) POWER ON

Press the power button to power on the device.

BASIC INDICATOR OVERVIEW

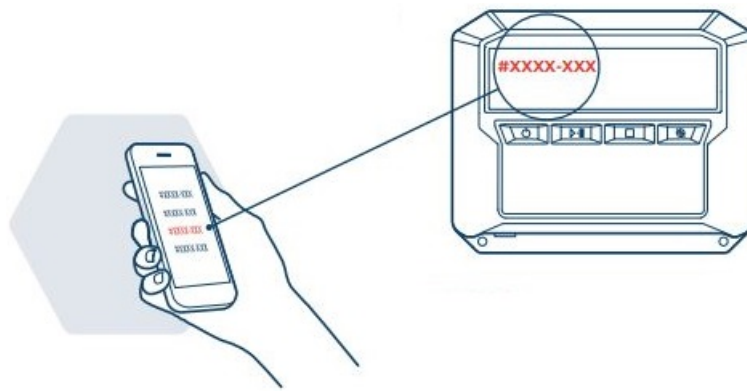


*NOTE

If the POINT unit displays UNLOAD or LOAD at the bottom of the screen on initial power up, press the square stop button to place POINT into Gross Mode.

(6) ACTIVATE DEVICE WITH APP

To correctly calibrate POINT, it is required to connect your profile to your POINT unit through the mobile app. Open the POINT app on your mobile device and follow the on-screen prompts to create your profile and complete the setup process.



WARNING: Never charge your tractor battery with POINT connected to power source. This will void your warranty.

***NOTE**

After connecting to POINT, you will be notified if there is a firmware update available. If you see this notification, follow the prompts to install the update.



www.scale-tec.com

16027 Hwy 64 East
Anamosa, IA 52205
1-888-962-2344

Documents / Resources



[SCALE-TEC Point Scale Indicator](#) [pdf] User Guide
7602008, Point Scale Indicator, Point, Scale Indicator

References

- [★ Scale-Tec - Custom Scale Solutions For Every Application Group Copy icons8-cow copy icons8-hay copy Group 11](#)
- [★ Scale-Tec - Custom Scale Solutions For Every Application Group Copy icons8-cow copy icons8-hay copy Group 11](#)