




Relative humidity 2 Dimensions (mm) KT320User Guide

[Home](#) » [sauermann](#) » Relative humidity 2 Dimensions (mm) KT320User Guide 

Contents

- [1 Relative humidity 2 Dimensions \(mm\) KT320](#)
- [2 Display](#)
- [3 Dimensions \(mm\)](#)
- [4 Connections](#)
- [5 Recorder function](#)
- [6 Mounting](#)
- [7 Accessories](#)
- [8 Documents / Resources](#)
 - [8.1 References](#)
- [9 Related Posts](#)



Relative humidity 2 Dimensions (mm) KT320



KT320 / KTT320 / KCC320 / KPA320 / KP320 / KP321

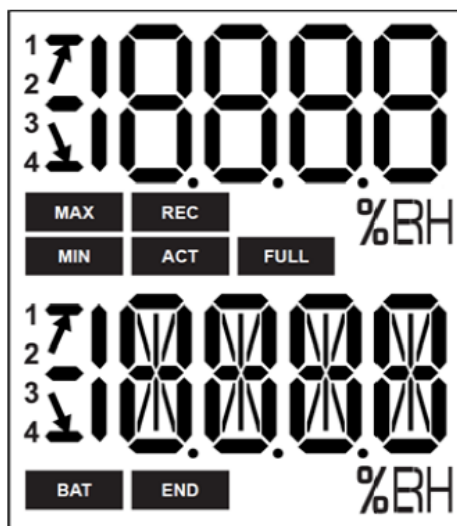
www.sauermanngroup.com

Reference	Parameters
KT 320	Temperature, humidity, current, voltage, electric pulses
KTT 320	Temperature
KCC 320	Temperature, humidity, atmospheric pressure, CO ₂
KPA 320	Temperature, humidity, atmospheric pressure
KP320, KP321	Differential pressure

Operating temperature, protection of the instruments and information about storage and the battery

- Operating temperature*: KT320: from -40 to +70 °C; KTT320: from -20 to +70 °C; KCC320, KPA320, KP320 & KP321: from 0 to 50 °C
 - KT320: IP65; KTT320: IP54; KCC320, KPA320: IP40, KP320, KP321: IP65*
 - Storage temperature: from -40 to +85 °C
- Battery power supply: 2 x lithium AA 3.6 V batteries

Display



END DATASET is finished.

REC Indicates that one value is being recorded.
It flashes: the DATASET did not start already.

FULL Flashing slowly: DATASET is between 80 and 90% of the storage capacity.
Flashing quickly: DATASET is between 90 and 100% of the storage capacity.
Constant: storage capacity full.

BAT Constant: indicates that the batteries have to be replaced.

1 2
3 4 Indicates the channel number which is measuring.

ACT Screen actualisation of measured values.

MIN The displayed values are the maximum/minimum values recorded
MAX for the channels displayed.



Indication of the direction of exceeding the threshold in the recorded measurement

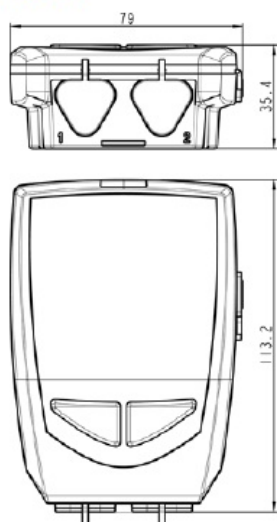
C: Temperature in °Celsius.

°F: Temperature in °Fahrenheit

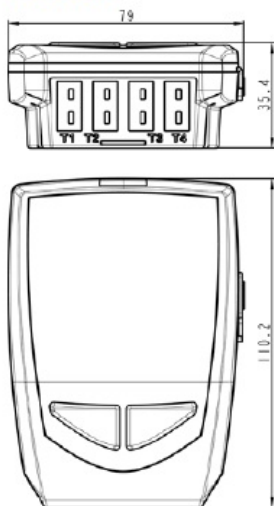
%RH: Relative humidity

Dimensions (mm)

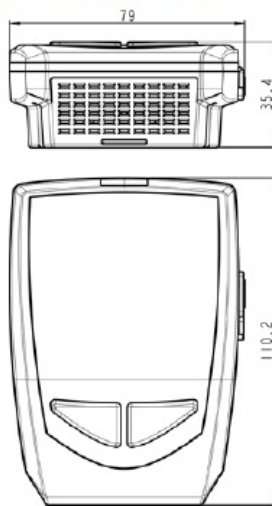
KT320



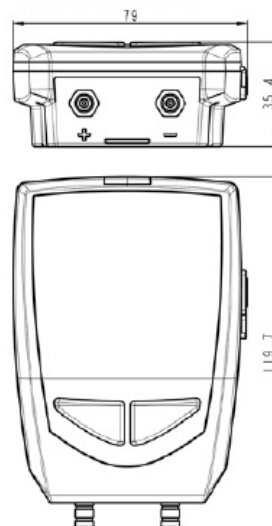
KTT320



KCC320, KPA320



KP320, KP321



*With the pressure connectors plugged

Connections



KT 320: 2 mini-DIN connections



KTT 320: 4 mini-thermocouples connections



KP320, KP321: Two pressure connections

PC connection



Micro-USB connector

Recorder function

Five recording modes

KISTOCK can record in 5 different ways:

- "Immediate" mode records values according to a predefined interval.
- "Minimum", "Maximum" and "Average" record automatically the calculation of minimum, maximum or average of measured values during an interval of recording.
- "Monitoring" mode allows to get an accurate history report during error events to help troubleshoot, without stopping the measurement logging. To proceed this way, you just have to define:
 - a record interval to be used whilst the readings are beyond the setpoints
 - a record interval for the values measured during each reading beyond the setpoints
- Furthermore, you can also let your KISTOCK record non-stop ("loop" recording option).

Four types of dataset start

Once your recording mode has been set, you can launch your dataset:

- With a delayed start (with predefined date and time)
- With the software
- With push-button
- With "Online" option. In this case, your datasets are directly sent, saved and displayed on your PC in real-time.

Six types of dataset stop

You can stop your dataset:

- According to a date and time (if it was started the same way)
- According to a period
- According to a predefined number of recording points
- Once the storage capacity is full
- With "Stop" option of the software
- By holding "OK" key during 5 seconds, if this function has been previously activated by the software

Mounting

Safety lock wall mount with padlock



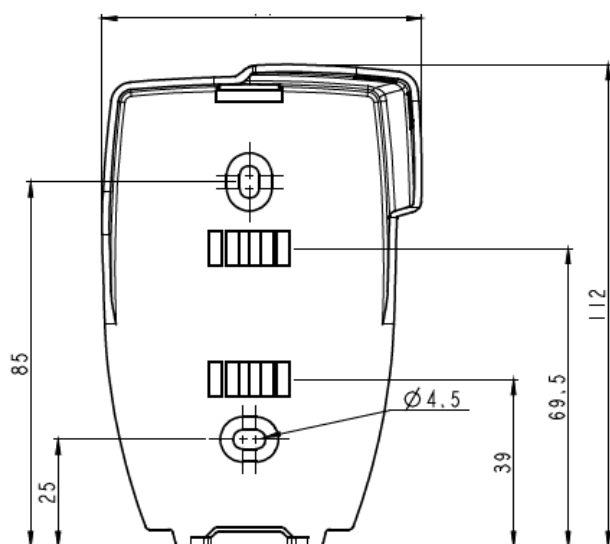
1. Present the KISTOCK data logger on the support starting with the inferior part
2. Clip the KISTOCK on the support by falling back the superior part
3. Insert the padlock to ensure the safety lock function

NOTE:

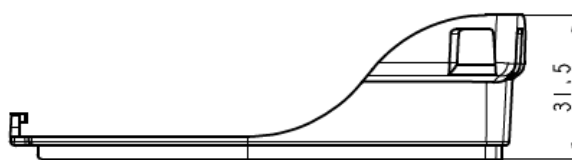
- The padlock can be replaced by a fail-safe sealed.
- The data logger can be placed on the screw-mount without the safety lock function.
- To remove the data logger from the support, proceed on reverse order.

Dimensions of the wall mount (mm)

Front view



Side view



Accessories

Please refer to the datasheet to get more information about available accessories.

Maintenance: Please avoid any aggressive solvent. Please protect the device from any cleaning product containing formalin, that may be used for cleaning rooms or ducts.

Precautions for use: please always use the device in accordance with its intended use and within parameters described in the technical features in order not to compromise the protection ensured by the device.




Customer service portal

Use our Customer service portal to contact us

<http://kimo-en.custhelp.com>

France www.sauermanngroup.com

Documents / Resources

	<p>sauermann KT320 Class 320 Kistock Data Loggers [pdf] User Guide KT320, KTT320, KCC320, KPA320, KP320, KP321, KT320 Class 320 Kistock Data Loggers, Class 320 Kistock Data Loggers, Data Loggers</p>
	<p>sauermann KT320 Class 320 Kistock Data Loggers [pdf] User Guide KT320, KTT320, KCC320, KPA320, KP320, KP321, Class 320 Kistock Data Loggers</p>
	<p>sauermann KT320 Class 320 Kistock Data Loggers [pdf] User Guide KT320 Class 320 Kistock Data Loggers, KT320, Class 320 Kistock Data Loggers, 320 Kistock Data Loggers, Kistock Data Loggers, Data Loggers, Loggers</p>

References

-  [Services - Homepage](#)
-  [Manufacturer of Condensate Pumps and Measuring Instruments | Sauermann group](#)