



## sauermann KT 50/KH 50 Temperature/Humidity Data Logger User Guide

[Home](#) » [sauermann](#) » sauermann KT 50/KH 50 Temperature/Humidity Data Logger User Guide 



**KT 50 – KH 50**  
Quick Start Guide

[www.sauermanngroup.com](http://www.sauermanngroup.com)



## Contents

- [1 Quick start guide](#)
- [2 Display](#)
- [3 Dimensions \(mm\)](#)
- [4 Connections](#)
- [5 EN12830 Standard](#)
- [6 Recorder function](#)
- [7 Mounting](#)
- [8 Replace the batteries](#)
- [9 Accessories](#)
- [10 Documents / Resources](#)
  - [10.1 References](#)
- [11 Related Posts](#)

## Quick start guide

### KISTOCK Data logger For HVAC – Temperature, Humidity

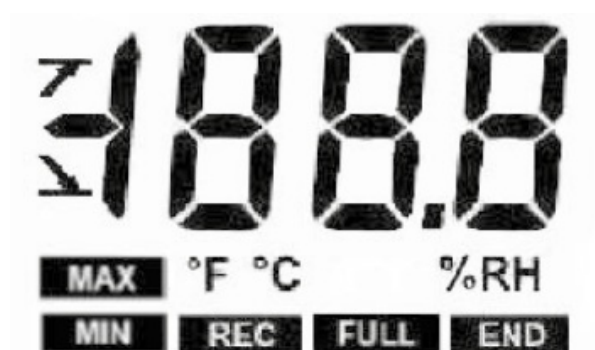


Operating temperature, protection of the instruments and information about storage and the battery

- Operating temperature\*: KT 50: from -40 to 70 °C / KH 50: from -20 to 70 °C
- KT 50: IP65 / KH 50: IP20
- Storage temperature: -40 to 85 °C

Battery power supply: 2 x CR2032 (lithium 3 V)

## Display



°C: Temperature in degrees Celsius  
°F: Temperature in degrees Fahrenheit  
%RH: Relative humidity (KH 50)

**END** Dataset is finished

**REC** Records the values at the moment when this indicator appears / flashing: the dataset has not yet started

**FULL** Slow flashing: dataset is taking between 80 and 90% of storage capacity Fast flashing: dataset is taking 90-100% of storage capacity Constant: storage capacity filled up

**MAX**

**MIN** Displayed values correspond to maximum and minimum values of the channels

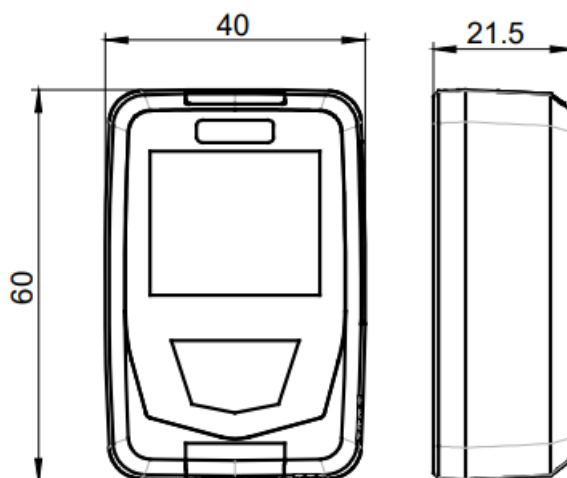


Alarm action type: rising or falling action

**BAT**

Flashing on the screen + flashing of LEDs: means that the battery must be changed

## Dimensions (mm)



## Connections

PC connection input



Micro-USB connector

## EN12830 Standard

KT 50 models dedicated to food industry, meet with requirements of EN 12830 norm. This certification is required for transportation, storage and distribution of refrigerated, frozen and deep-frozen food, and ice cream. Certification is done by an independent laboratory, COFRAC accredited.

\* The screen can be hard to read, and its display speed often slows down at temperatures lower than 0 °C. This has no effect on the accuracy of measurements.

## Recorder function

The KISTOCK allows to record the values measured instantaneously, it records the values according to a predefined interval.

On the other hand, it is possible to operate continuously the KISTOCK thanks to a loop recording.

## 3 types of dataset start

The measurement dataset can be launched:

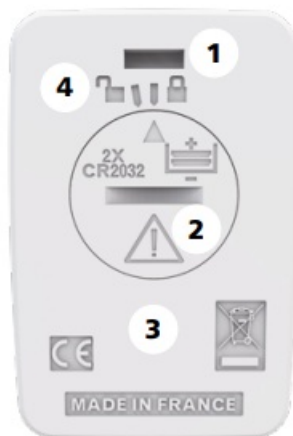
- With a delayed start (with predefined date and time)
- With the software
- With OK key

## 6 types of dataset stop

You can stop your dataset:

- According to a date and time (if it was started the same way)
- According to a recording duration
- According to a predefined number of recording points
- If the storage capacity of the memory is full
- With "Stop" option of the software
- By holding "OK" key during about 5 seconds, if this function has been previously activated by the software.

## Mounting



KISTOCK can be mounted in different ways, you can also move it or install it very easily.

- Magnetic mounting (see photo)
1. Necklace for anti-theft
  2. Batteries cover
  3. Magnetic fixing
  4. Locking sign of the batteries cover



### Replace the batteries

With 500 days\* battery life, KISTOCK ensure long-term measurements. To change the batteries:

- Unlock the battery cover with a screwdriver or a coin.
- Put the 2 batteries superimposing them (3 V CR2032 button batteries) with the + pole visible.
- Put back the batteries cover: the sign of the batteries cover must be placed in front of the opened padlock.
- Turn right the batteries cover: the sign on the batteries cover must be placed in front of the closed padlock.

## Accessories

Please refer to the data sheet to get more information about available accessories.

**Maintenance:** please avoid any aggressive solvent. Please protect the device from any cleaning product containing formalin, that may be used for cleaning rooms or ducts.

**Precautions for use:** please always use the device in accordance with its intended use and within parameters described in the technical features in order not to compromise the protection ensured by the device.

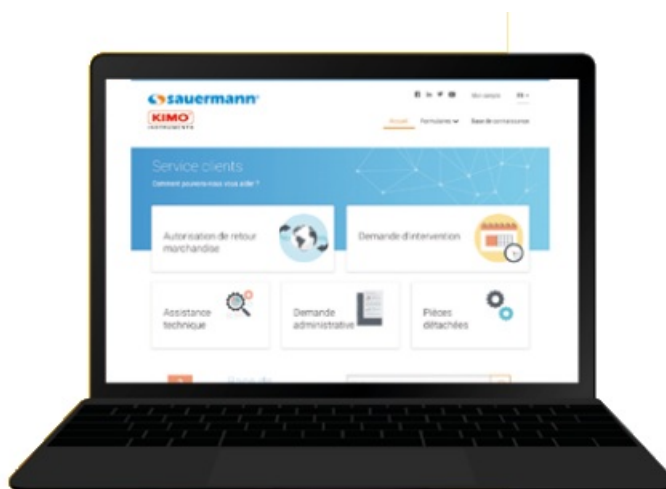
\*For a KT 50 on the basis of 1 measurement each 15 minutes at 25 °C.

[Download the data sheet](#)



<https://sauermanngroup.com/en-INT/technical-documents?search=KH+50>

## Customer service portal



Use our Customer service portal to contact us

<http://kimo-en.custhelp.com>

Sauermann Industries – ZA Bernard Moulinet – 24700 – Montpon – France

[www.sauermanngroup.com](http://www.sauermanngroup.com)




QSG – KT 50 – KH 50 – 10/01/2022

– Non-contractual document

– We reserve the right to modify the characteristics of our products without prior notice.

## Documents / Resources

 The image shows the cover of a user guide for the Sauermann KT 50 and KH 50 Temperature/Humidity Data Loggers. It features the Sauermann logo at the top left, a geometric line-art design at the top right, and two digital display units in the center. Below the units, the text 'KT 50 - KH 50' and 'Data logger' is visible. At the bottom, there is a CE mark and the website 'www.sauermann.de'.	<p><a href="#">sauermann KT 50/KH 50 Temperature/Humidity Data Logger</a> [pdf] User Guide KT 50, KH 50, Temperature Humidity Data Logger, KT 50 KH 50 Temperature Humidity Data Logger</p>
--	---

## References

- [Services - Homepage](#)
- [Manufacturer of Condensate Pumps and Measuring Instruments | Sauermann group](#)

Manuals+.