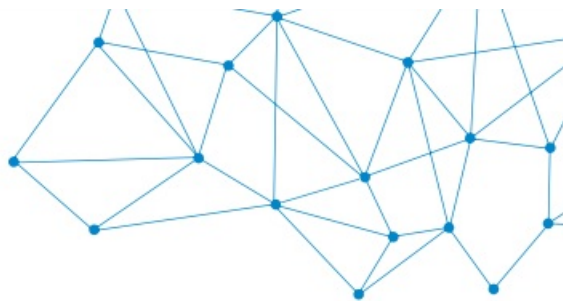




sauermann AMI 310 Base Multi Function Portable Instrument User Guide

[Home](#) » [sauermann](#) » sauermann AMI 310 Base Multi Function Portable Instrument User Guide 

*sauermann AMI 310 Base Multi Function
Portable Instrument User Guide*



AMI 310

Quick Start Guide



www.sauermanngroup.com

www.sauermanngroup.com

Quick Start Guide

The AMI 310 measures simultaneous parameters including pressure, temperature (Pt100 and thermocouple), humidity, air quality (CO/CO₂), air velocity, airflow (vane probes and hotwire), and tachometry.

Operating temperature, protection of the instruments and information about storage and the battery

- Operating temperature: 0 to 50 °C (+32 to +122 °F)
- IP 54
- Storage temperature: -20 to 80 °C (-4 °F to 176 °F)

If the instrument is stored outside the operating temperature (for example in a van, a warehouse,...) please wait for 10 minutes in its operating temperature before starting and using it.

Rechargeable Li-ion battery inside the instrument, 16 h battery-life with a pressure module or 14 h a hotwire probe. The instrument is supplied with a 5 V, 1 A power adapter to load the internal battery. The current loading is indicated by a battery symbol on the top left of the screen. The orange led on the bottom of the instrument is also on until the full loading of the battery (the led turns green).

Directive 2014/53/EU

Hereby, Sagerman Industry SAS declares that the radio equipment type AMI 310 is in compliance with Directive 2014/53/EU. The full text of the EU declaration of conformity is available at the following internet address:

www.sauermanngroup.com

Contents

- 1 1 Device description
- 2 2 Connections
- 3 3 Set language OK
- 4 4 Use of the probes
- 5 5 Start and record datasets
- 6 5 Hold-Min./Max.
- 7 6 Perform an autozero
- 8 Documents / Resources
 - 8.1 References
- 9 Related Posts

1 Device description



- 1. Battery level
- 2. USB connection indicator
- 3. Battery level
- 4. Date and time
- 5. Home screen
- 6. Measurement menu
- 7. Dataset menu
- 8. Configuration menu

9. Information menu
10. Function keys
11. OK button
12. Navigation arrows
13. ESC button
14. On/Off button

2 Connections



1. Module
2. Location to remove the module
3. Battery
4. Probe handle

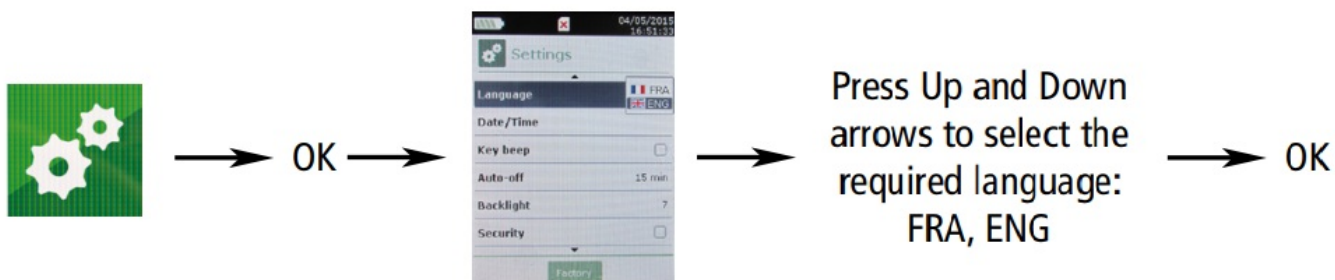


1. Mini-DIN C2 connection
2. Thermocouple inputs
3. Mini-DIN C1 connection



1. USB connection + power supply
2. Light indicator for battery charging

3 Set language OK



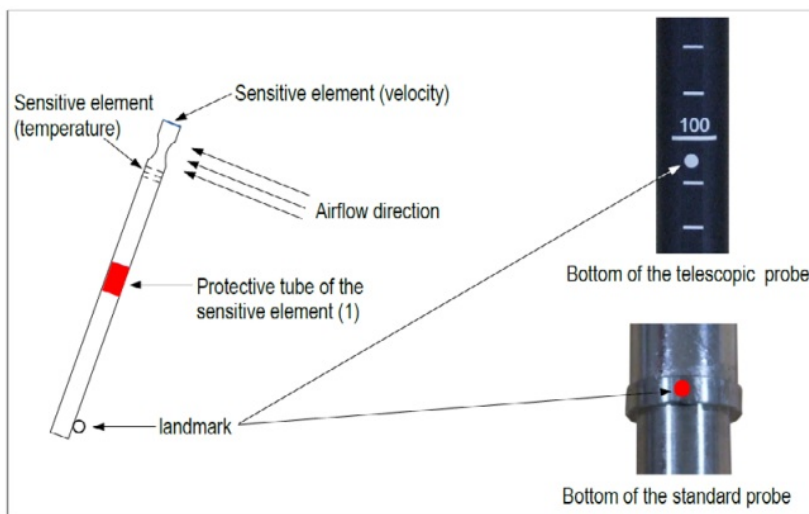
4 Use of the probes

Connect a probe

Connect the mini-DIN cable on the mini-DIN connection of the probe. Connect the mini-DIN cable with the probe

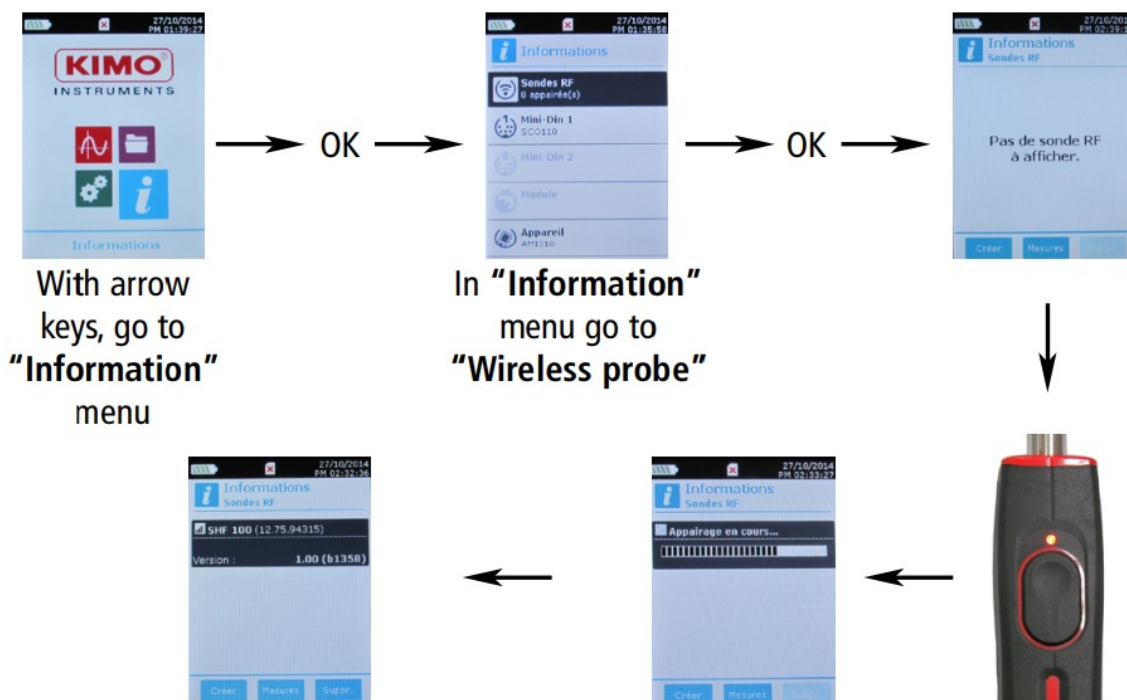
on the instrument. A beep indicates that the operation has been correctly performed.

Special precautions for air velocity probes



Before any use of the device with an air velocity probe, please lower the protective tube (1) of the sensitive element (except vane probe). Always use the standard air velocity probe with the red point in front of the flow. Always use the telescopic probe with the white point in front of the flow.

Add a wireless probe



On the bottom of the screen press the function key "Create"

Turn on the wireless probe and keep it press until the light blinks

The probe information is displayed with the function key "Meas." It is possible to back to the measurement screen. It is also possible to delete the wireless probe pressing the function key "Delete".

5 Start and record datasets



The instrument is on.

Select with arrows keys **"Measurement"** menu. Press **OK**.

Select with arrows keys the measurement in which the dataset will be performed.

Press **"Functions"** key then select **"Dataset"** with arrow keys and press **OK**.

Dataset menu is displayed.

Go to line **"Name"** with arrow keys and press **OK**.

A keypad is displayed on the bottom of the screen.

Select the letters with arrow keys then press **OK**.

To go from the lower case keypad to the upper case keypad then to the numeric keypad, press the function key: **aA1**

To delete a letter press the function key **"Delete"**.

Press the function **"Validate"** to validate the name of the dataset.

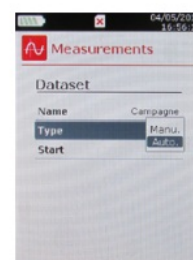
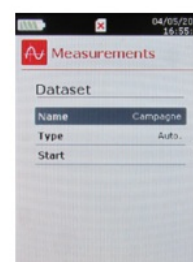
A dataset is composed of several dated measuring points.

You can choose between an automatic dataset or a manual dataset.

Go to **"Type"** with arrow keys then press **OK**.

Select **"Manu."** for manual or **"Auto."** for automatic.

Go to **"Start"** then press **OK**.



View the recorded datasets

Go to the "Dataset" menu with the arrow keys from the home screen. The different measuring datasets are displayed. They are listed by date. To delete all the datasets: press the function key "Del all". To delete just one dataset: go to the dataset to delete with the arrow keys and press the function key "Delete". A confirmation window opens: select YES to confirm the deletion or NO to cancel.

Launch averages The instrument is on. Go to "Measurement" with the arrow keys. Press OK. Press the function key "Functions" then select "Averages" then press OK. "Average" menu is displayed.

5 Hold-Min./Max.



Go to "Measurement" menu with the arrow keys and press OK. Measurements are displayed. Press OK. Measurements are frozen on the screen and the minimum and maximum values are displayed.

6 Perform an autozero

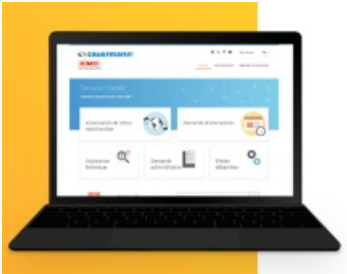
It is possible to perform an autozero with a pressure module. This sub-function allows to manually compensate the potential deviations of the sensitive element over time through a manual adjustment of the zero. For the 500

Pa pressure module with solenoid valve: In the menu “Functions”, go to “Autozero” then press OK. For 2500 Pa, 10000 Pa, 500 mbar and 2000 mbar pressure modules without solenoid valve: Unplug the 2 pressure connections tubes from the pressure module. In the menu “Functions”, go to “Autozero” then press OK.



<https://sauermanngroup.com/en-INT/technical-documents?search=ami>



Download the full manual
Customer service portal
Use our Customer service portal to contact us
<http://kimo-en.custhelp.com>



Sauermann Industries – ZA Bernard Moulinet – 24700 – Montpon – France
www.sauermanngroup.com



Documents / Resources

	sauermann AMI 310 Base Multi Function Portable Instrument [pdf] User Guide AMI 310, Base Multi Function Portable Instrument
	sauermann AMI 310 BASE Multi-Function Portable Instrument [pdf] User Guide AMI 310 BASE Multi-Function Portable Instrument, AMI 310, BASE Multi-Function Portable Instrument, Multi-Function Portable Instrument, Function Portable Instrument, Portable Instrument, Instrument

References

-  [Services - Homepage](#)
-  [Manufacturer of Condensate Pumps and Measuring Instruments | Sauer group](#)

Manuals+.