



Sauermann
group Si-CPE320
Flush Mounted
Multifunction
Sensor
Transmitter



Sauermann group Si-CPE320 Flush Mounted Multifunction Sensor Transmitter User Guide

[Home](#) » [Sauermann Group](#) » Sauermann group Si-CPE320 Flush Mounted Multifunction Sensor Transmitter User Guide 

Contents

- [1 Sauermann group Si-CPE320 Flush Mounted Multifunction Sensor Transmitter](#)
- [2 Product Information](#)
- [3 Product Usage Instructions](#)
- [4 Connections](#)
- [5 First start-up](#)
- [6 Probe connection/disconnection](#)
- [7 Set a channel](#)
- [8 Maintenance](#)
- [9 FAQ](#)
- [10 Documents / Resources](#)
 - [10.1 References](#)
- [11 Related Posts](#)



Sauermann group Si-CPE320 Flush Mounted Multifunction Sensor Transmitter



Product Information

Specifications

- Brand: Sauermann
- Model: Si-CPEC320
- Compliance: Directive 2014/53/EU
- Mounting Dimensions: 218 mm x 82 mm x 45 mm
- Power Supply: 24 VDC or 24 VAC

Product Usage Instructions

Mounting

To install the transmitter:

1. Make a cutting of 200 x 82 mm in the wall.
2. Drill 4 holes around the cutting as shown.
3. Insert the transmitter into the wall and fix it with the 4 screws provided.
4. Ensure IP66 protection by using silicone sealant between the wall and the transmitter.

Connections

Make electrical connections as per NFC15-100 standard:

- Connections must be made by a qualified technician.
- The transmitter should not be energized during connections.

First Start-Up:

Follow these steps to start up the transmitter:

1. Select your language and tap 'Next'.
2. Set your time and time zone.
3. Connect the probe(s) before configuring the channel(s).

Quick Start Guide

These operating instructions describe the basic handling of the device.

Please refer to the operating instructions available at sauermanngroup.com for safe use of the product and detailed information.

Do not give this device to a child.

1. Symbols used

For your safety and in order to avoid any damage of the device, please read carefully the notes preceded by the following symbol:

2. Description of the device, operating temperature, protection of the instruments and information about storage

The Si-CPE320 is a transmitter that can measure simultaneous parameters including differential pressure, temperature (Pt100 and thermocouple), hygrometry, air quality (CO/CO2/VOC), air velocity, and airflow.

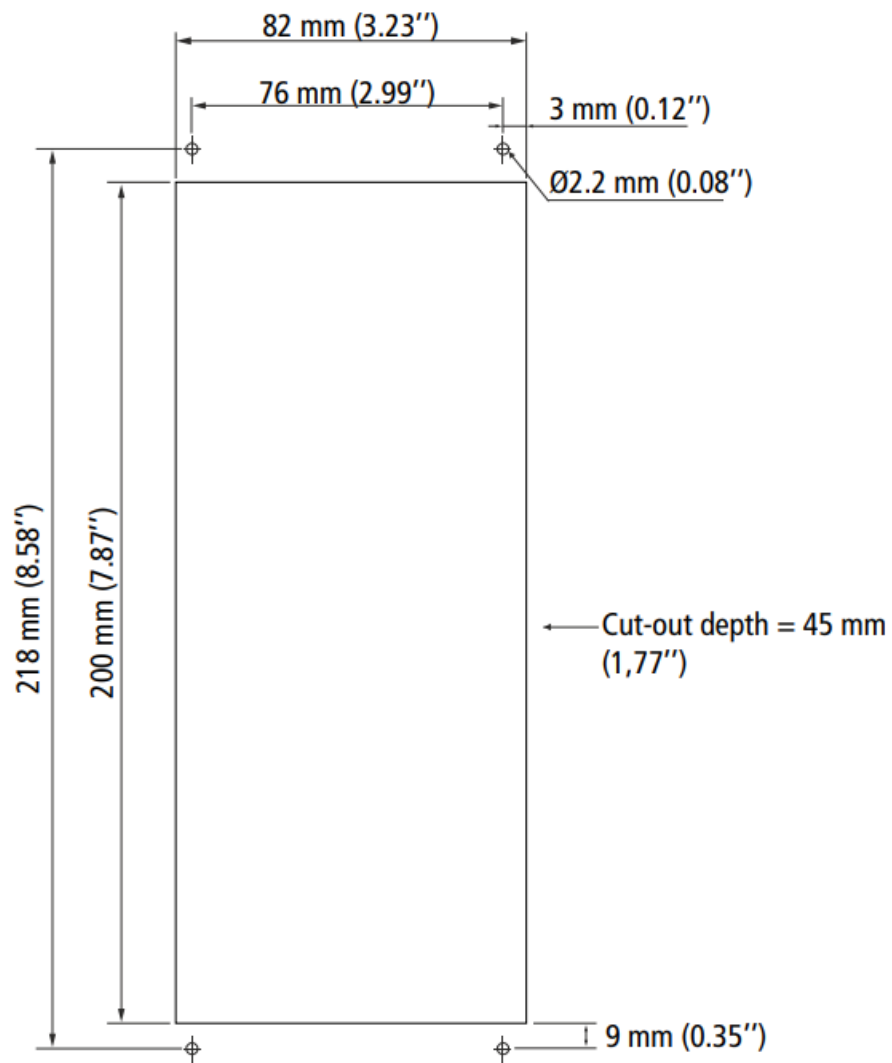
- Operating temperature: -10 to 50°C (14 to 122°F)
- Protection: IP66, resistant to VHP*
- Storage temperature: -10 to 70°C (14 to 158°F)

Directive 2014/53/EU

Hereby, Sauermann Industrie SAS declares that the radio equipment type Si-CPEC320 is in compliance with Directive 2014/53/EU. The full text of the EU declaration of conformity is available at the following internet address: sauermanngroup.com

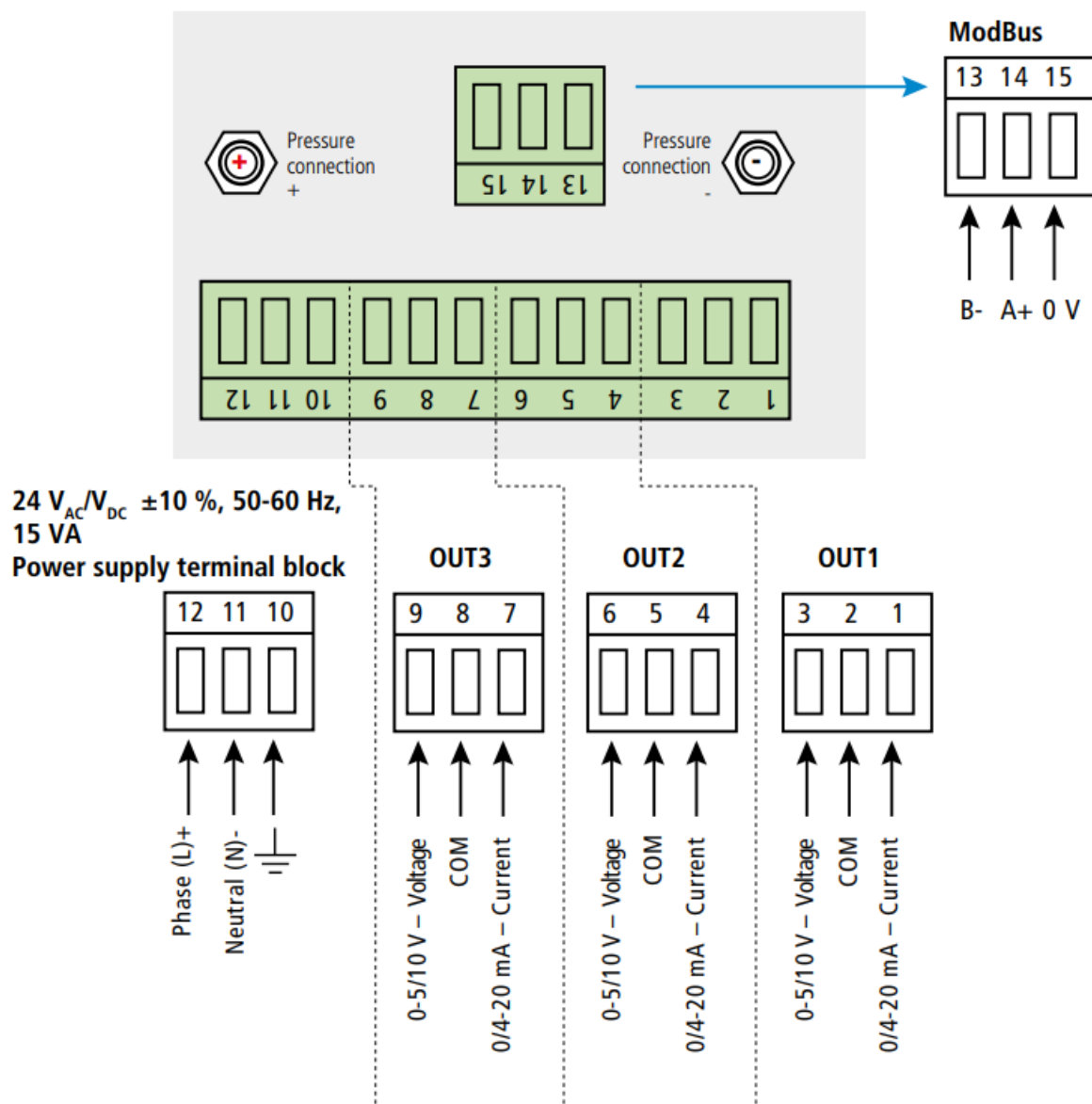
Mounting

To install a transmitter on a wall, make a cutting of 200 x 82 mm in the wall. Then drill 4 holes around the cutting as shown beside. Insert the transmitter into the wall and fix it with the 4 screws (supplied with the transmitter).



To ensure IP66 protection, use sealant of silicone type between the wall and the transmitter.
If VHP* is used, check that the seal is VHP resistant.

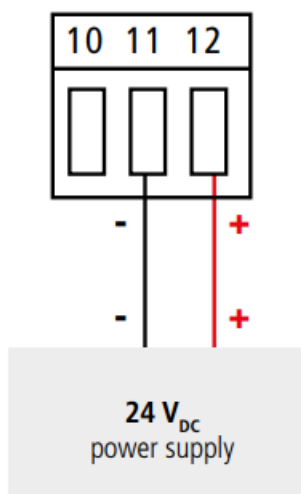
Connections

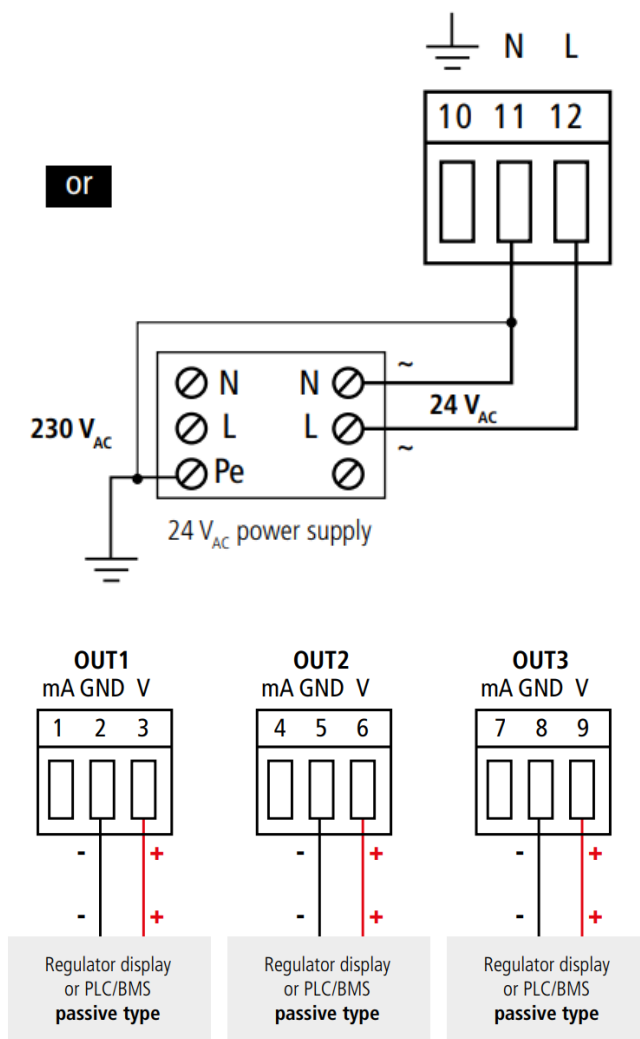
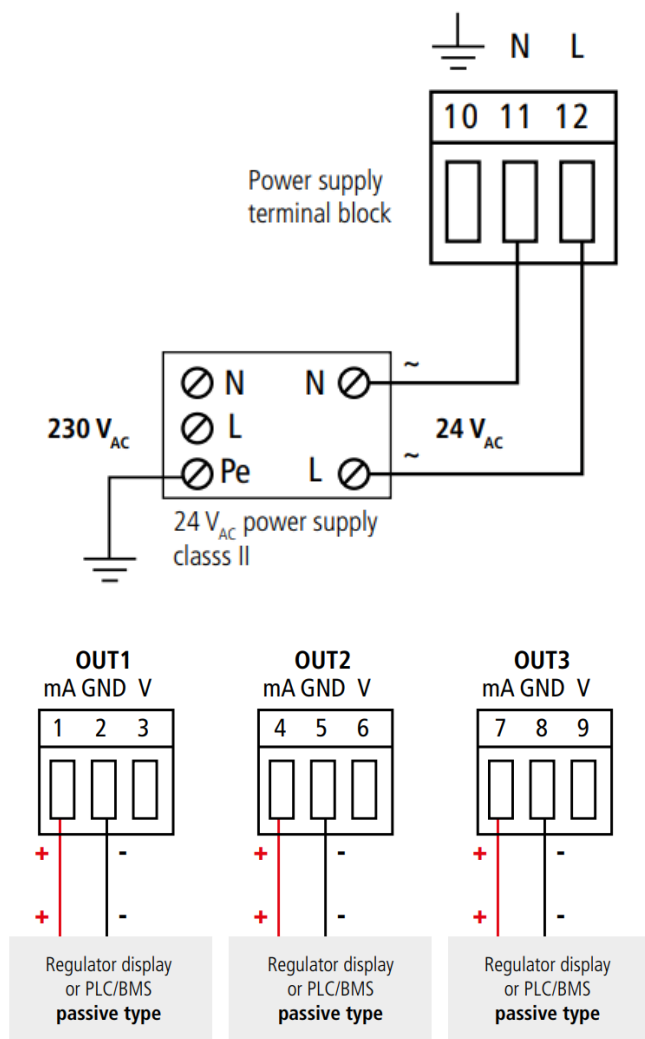


Electrical connections as per NFC15-100 standard

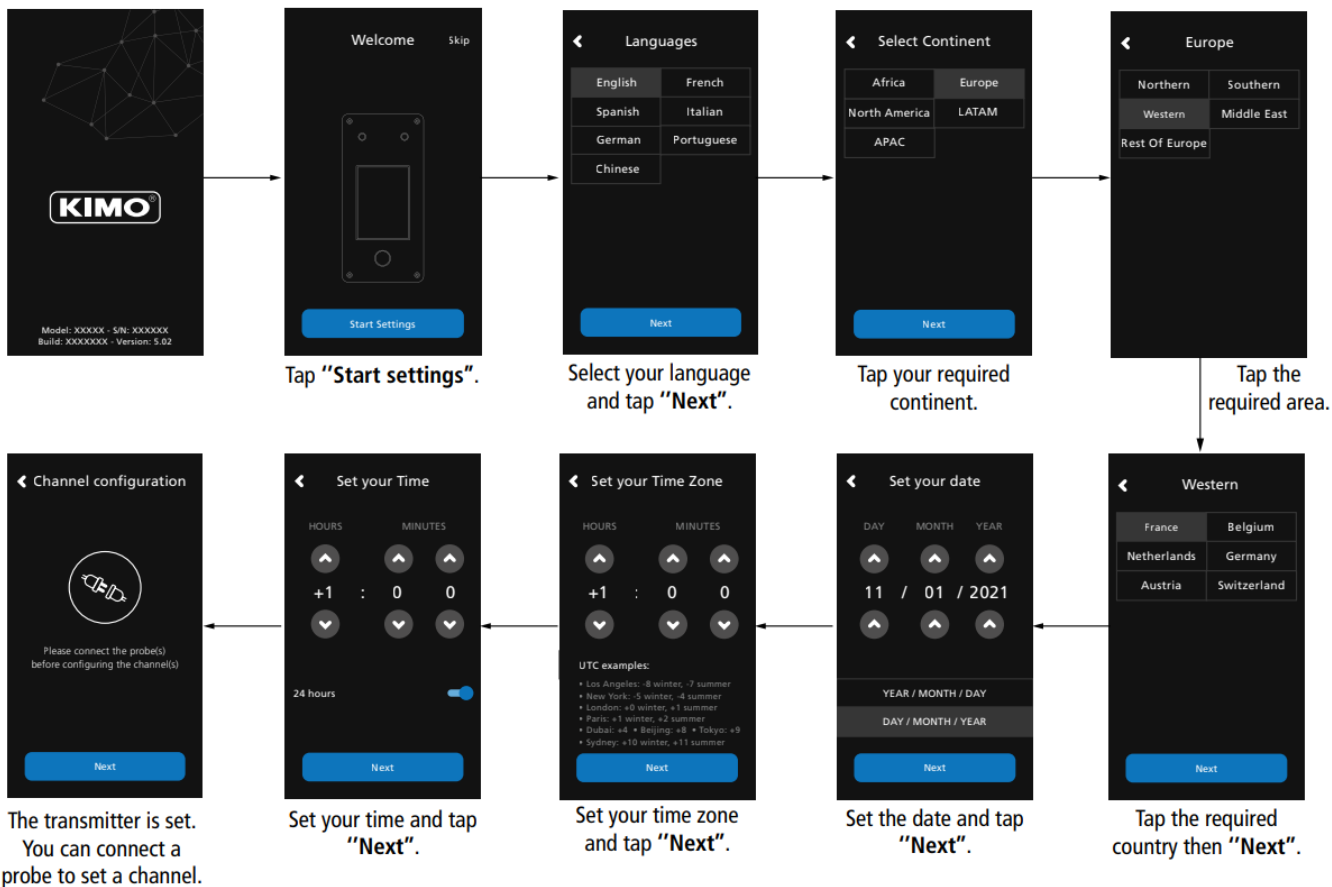
This connection must be made by a formed and qualified technician. Whilst making the connection, the transmitter must not be energized. The presence of a switch or a circuit breaker upstream the device is compulsory.

Power supply terminal block



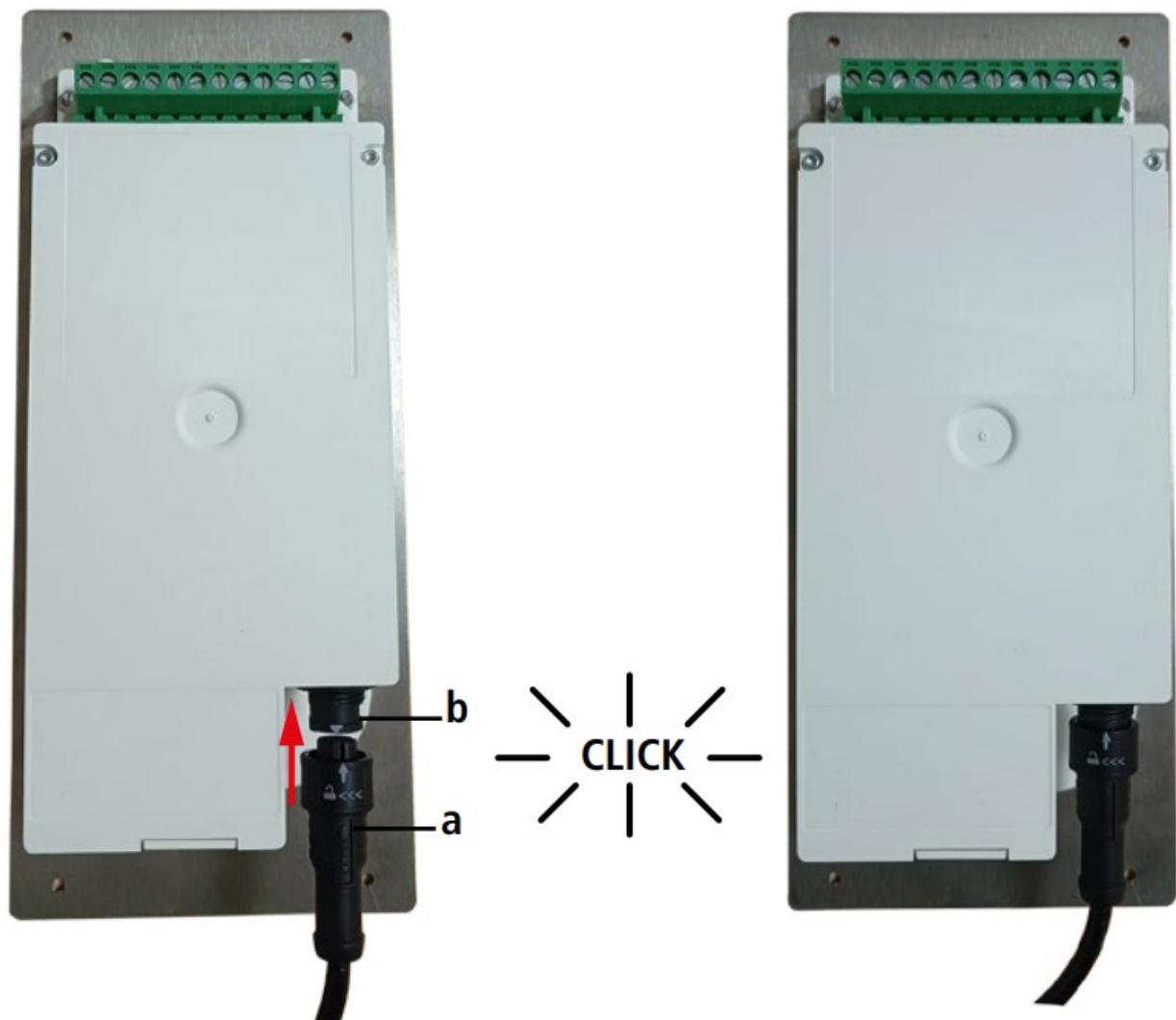


First start-up



Probe connection/disconnection

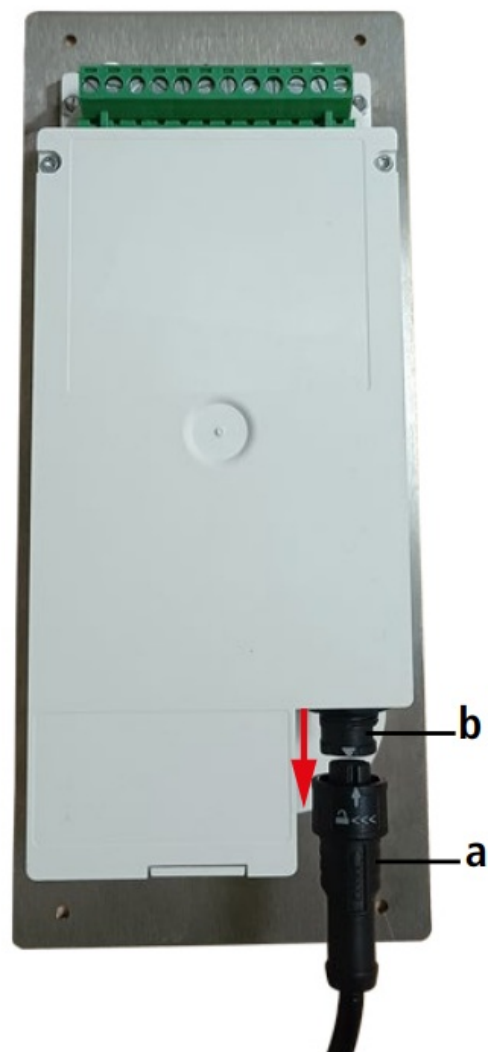
Connect a probe to the Si-CPE320 transmitter



- On the back of the transmitter, present the probe connector (a) with its arrow and padlock face to the transmitter connector (b).
- Push in the probe connector (a) into the transmitter connector (b) until you hear a click. The probe is correctly connected.

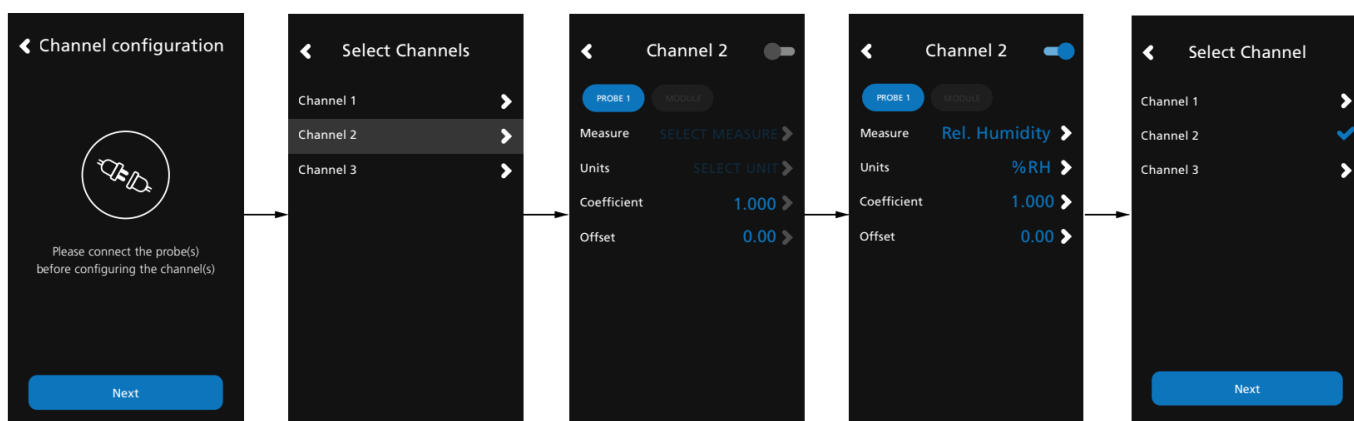
Disconnect a probe from the Si-CPE320 transmitter

- Turn the ring (c) of the probe connector to the left.
- Pull the probe connector (a) away from the transmitter connector (b).



Set a channel

- Connect a probe to set a channel and tap "Next".
- The list of available channel is displayed. Tap the required channel
- Tap "PROBE 1" or "MODULE". Parameters to set are now available.
- Set the parameters according to your needs then tap the back arrow on the top left.
- Channel two is configured. Tap next to configure outputs.

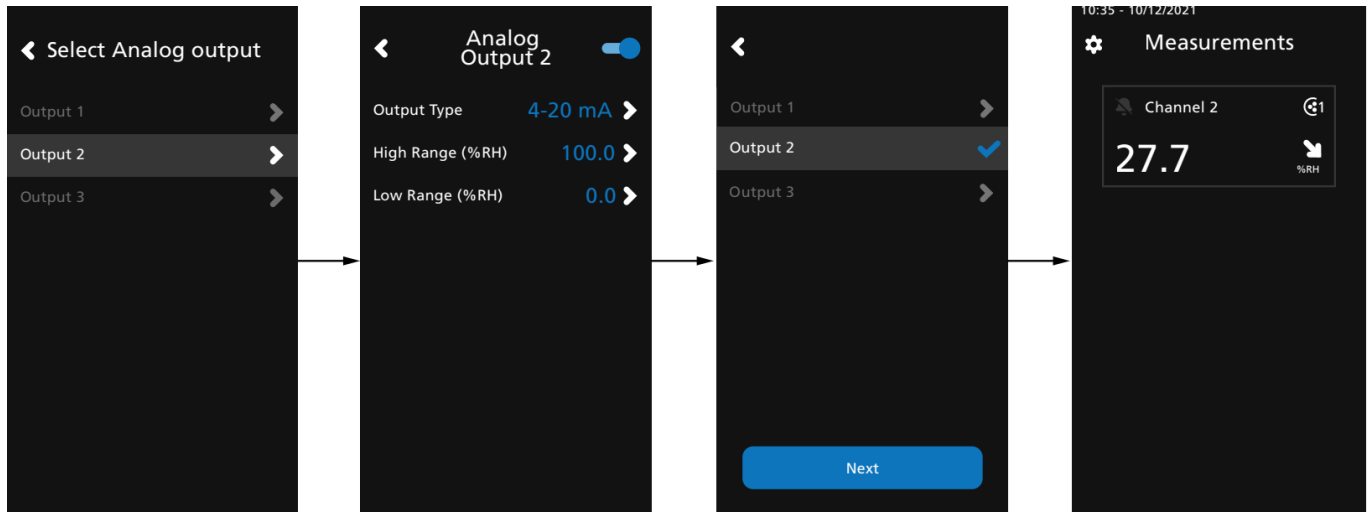


Set an output

- Tap the output to set corresponding to the previously configured channel.



- Activate the output tapping
- Set the output type and high and low range values then tap the back arrow on the top left.
- Tap “Next” to display measures.



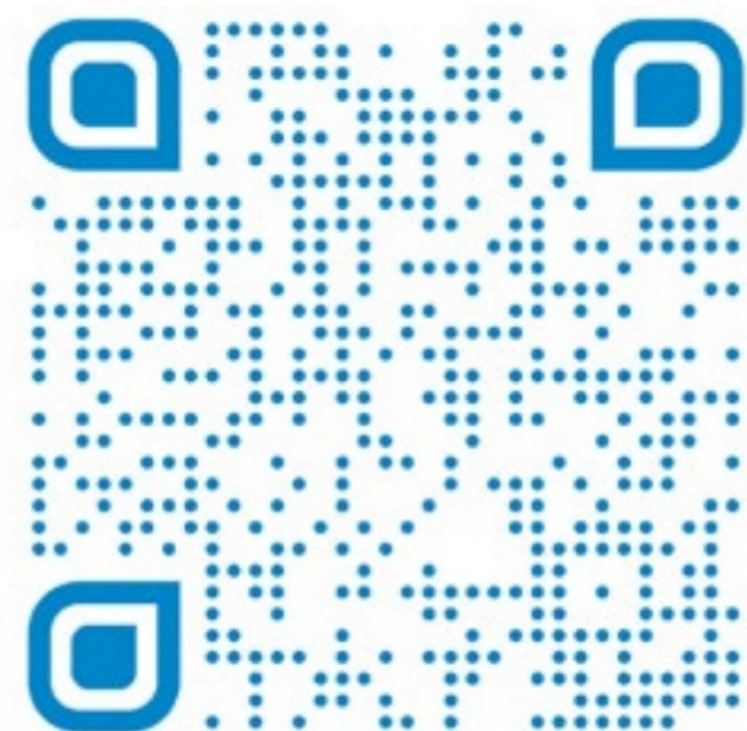
Maintenance

Please avoid any aggressive solvents. Please protect the transmitter and its probes from any cleaning product containing formalin, that may be used for cleaning rooms or ducts.

Precautions for use

Please always use the device in accordance with its intended use and within parameters described in the user manual in order not to compromise the protection ensured by the device.

Register your product online to confirm your warranty and benefit from the full Sauermann range.



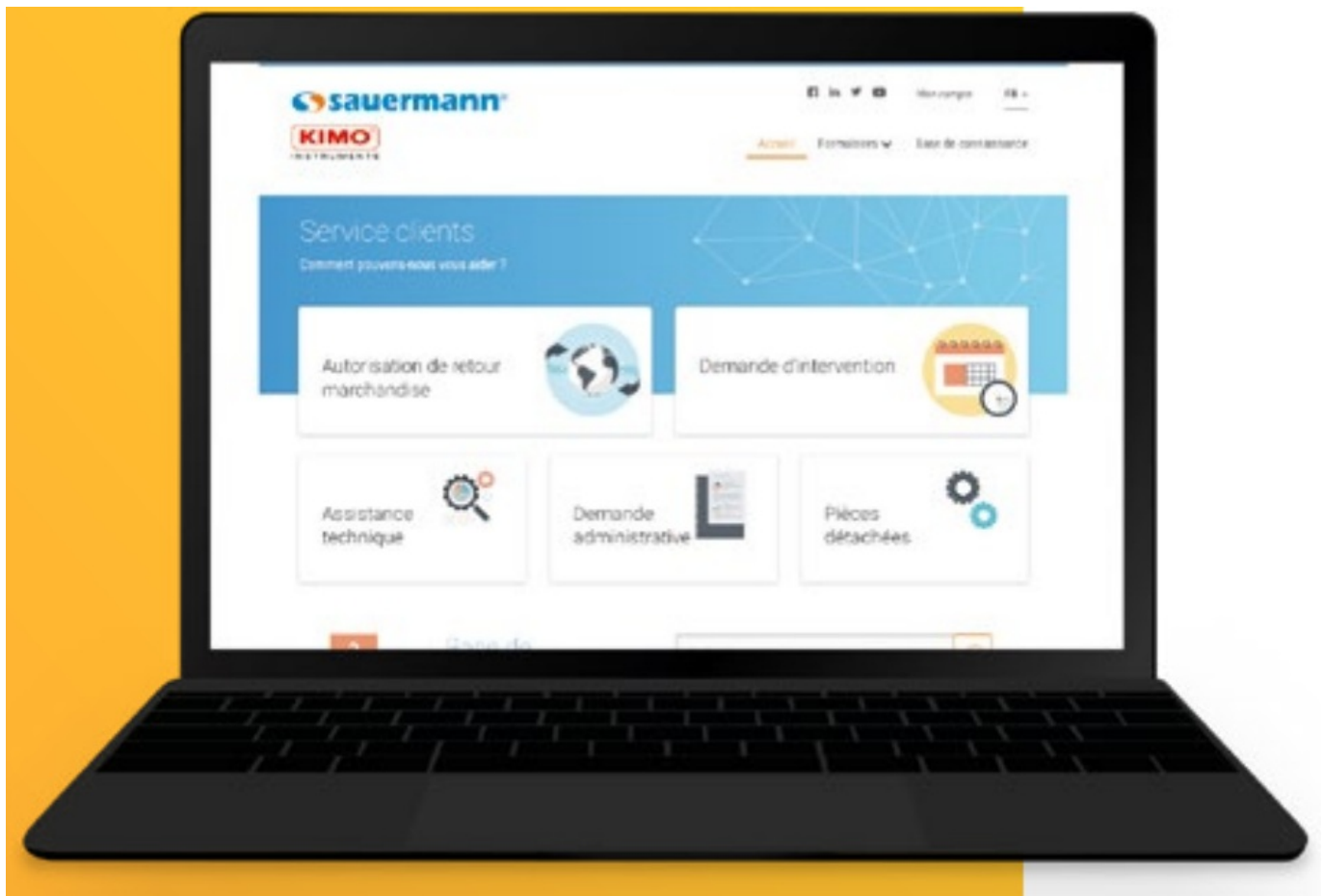
Make the most of your device's capabilities by downloading the app.



Access all documentation about the device.



Customer service portal



Kimo, a Sauermann brand.

sauermanngroup.com

Sauermann Industrie

ZA Bernard Moulinet

+33 (0)5 53 80 85 00

services@sauermanngroup.com

FAQ

Q: How do I ensure IP66 protection during installation?

A: Use silicone sealant between the wall and the transmitter to ensure IP66 protection.

Q: Can I make electrical connections myself?

A: No, electrical connections must be made by a formed and qualified technician.

Documents / Resources



[Sauermann group Si-CPE320 Flush Mounted Multifunction Sensor Transmitter](#) [pdf] User Guide

KIMO, Si-CPE320 Flush Mounted Multifunction Sensor Transmitter, Si-CPE320, Flush Mounted Multifunction Sensor Transmitter, Mounted Multifunction Sensor Transmitter, Multifunction Sensor Transmitter, Sensor Transmitter, Transmitter

References

- [🌐 Services - Homepage](#)
- [User Manual](#)

[Manuals+](#), [Privacy Policy](#)

This website is an independent publication and is neither affiliated with nor endorsed by any of the trademark owners. The "Bluetooth®" word mark and logos are registered trademarks owned by Bluetooth SIG, Inc. The "Wi-Fi®" word mark and logos are registered trademarks owned by the Wi-Fi Alliance. Any use of these marks on this website does not imply any affiliation with or endorsement.