



SATECHI USB-C Multiport MX Adapter User Manual

[Home](#) » [SATECHI](#) » SATECHI USB-C Multiport MX Adapter User Manual 

Contents

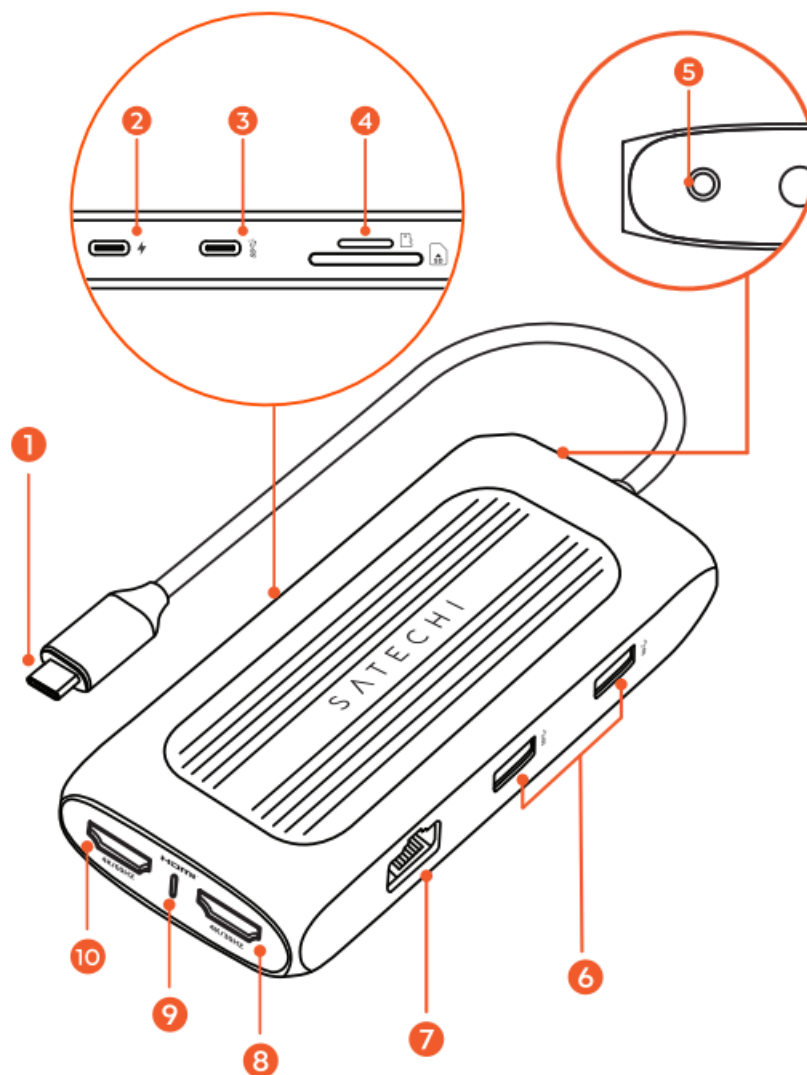
- [1 SATECHI USB-C Multiport MX Adapter](#)
- [2 FUNCTION](#)
- [3 PLUG & PLAY](#)
- [4 ADAPTER INSTALLATION](#)
- [5 FCC](#)
- [6 CE DECLARATION OF CONFORMITY](#)
- [7 WEEE Information](#)
- [8 CONTACT](#)
- [9 Documents / Resources](#)
- [10 Related Posts](#)

S A T E C H I

SATECHI USB-C Multiport MX Adapter



FUNCTION

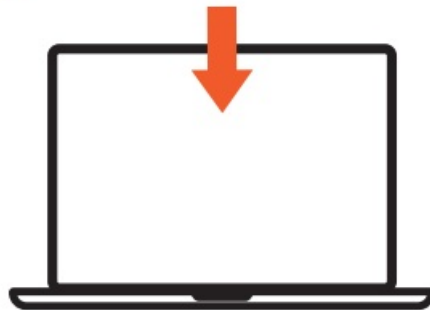


1. USB-C Cable
2. USB-C PD Port (up to 100 W)

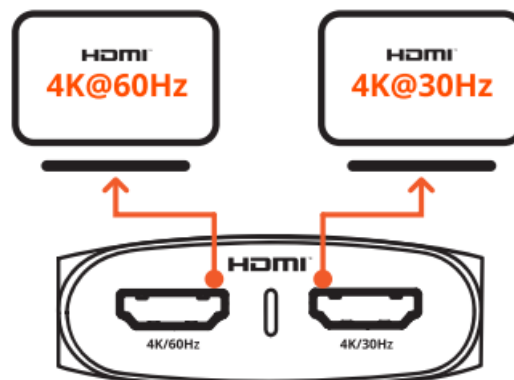
3. USB-C Data Port
4. SD & Micro SD Card Slots
5. Audio Jack Port
6. 2X USB-A 3.0 Port
7. Ethernet Port
8. 4K@30Hz HDMI Video Port
9. LED Indicator
10. 4K@60Hz HDMI Video Port

PLUG & PLAY

1. Download and install the instantview app.



2. Connect your screens



IMPORTANT

Silicon Motion software must be installed for both HDMI ports to function.

ADAPTER INSTALLATION

1. Connect Adapter to host device.
2. Drive will appear on the desktop. Look for the Drive name {MX Adapter}.
3. Open Drive
4. Look for file macOS_ImageView_V2 ... 01 I .dmg
5. Open File
6. macOS ImageView Window will pop up
7. Drag macOS ImageView Application to System Applications.
8. Look for ImageView application in System Applications and launch.
9. A popup will appear asking if you allow ImageView to record your screen. Click on Open System Preferences.
10. Click on the lock icon on the bottom left corner and unlock the computer.
11. On the right, macOS ImageView will appear. Check the box allowing the app to access your screen.
12. macOS will prompt you to quit and reopen the app.
13. macOS ImageView may prompt you to update the Application. Feel free to do so.
14. Click on the lock again.
15. Relaunch the app and you should be set.
16. Feel free to eject the macOS ImageView installer as well as the Drive from your desktop.

FCC

- This device complies with part 15 of the FCC results.
- Operation is subject to the following two conditions:
 1. This device may not cause harmful interference and
 2. This device must accept any interference received, including interference that may cause undesired operation.
- **Note:** This Equipment has been tested and found to comply with the limits for a class B digital device, pursuant to Part 15 of the Federal Communications Commission (FCC) rules. These limits are designed to provide reasonable protection against harmful interference in a residential installation. This equipment generates, uses, and can radiate radio frequency energy and, if not installed and used in accordance with the instructions, may cause harmful interference to radio communications. However, there is no guarantee that interference will not occur in a particular installation. If this equipment does cause harmful interference to radio or television reception, which can be determined by turning the equipment off and on, the user is encouraged to try to correct the interference by one or more of the following measures:
 - Reorient or relocate the receiving antenna
 - Increase the separation between the equipment and receiver
 - Connect the equipment into an outlet on a circuit different from that to which the receiver is connected
 - Consult the dealer or an experienced radio/TV technician for help
- Changes or modifications not expressly approved by the manufacturer could void the user's authority to operate the equipment.

CE DECLARATION OF CONFORMITY

Satechi declares that this product is in compliance with the essential requirements and other relevant provisions

of applicable EC directives. For Europe, a copy of the Declaration of Conformity for this product may be obtained by visiting www.satechi.net/doc

WEEE Information

According to the WEEE (Waste Electrical and Electronic Equipment) Directive, do not dispose of this product as household waste or commercial waste. Waste electrical and electronic equipment should be appropriately collected and recycled as required by practices established for your country. For information on recycling of this product, please contact your local authorities, your household waste disposal service, or the shop where you purchased the product.

CONTACT

- +1 858 268 1800
- support@satechi.com

Documents / Resources

| | |
|--|--|
|  <p>SATECHI USB-C[®] MULTIPORT MX ADAPTER USB-MANUAL</p> <p>Manuel d'utilisation / Manual de usuário / Bedienungsanleitung Manual de instruções / Istruzioni per l'uso / Instrukcja obsługi SATECHI SATECHI</p> | <p>SATECHI USB-C Multiport MX Adapter [pdf] User Manual</p> <p>USB-C Multiport MX Adapter, USB-C Multiport MX Adapter, USB-C, Multiport MX Adapter, MX Adapter</p> |
|--|--|

[Manuals+](#)