



SATECHI ST-UCICHS Stand Hub for MAC Mini with SSD Enclosure User Manual

[Home](#) » [SATECHI](#) » SATECHI ST-UCICHS Stand Hub for MAC Mini with SSD Enclosure User Manual

S A T E C H I STAND HUB FOR MAC MINI W/ SSD ENCLOSURE User Manual

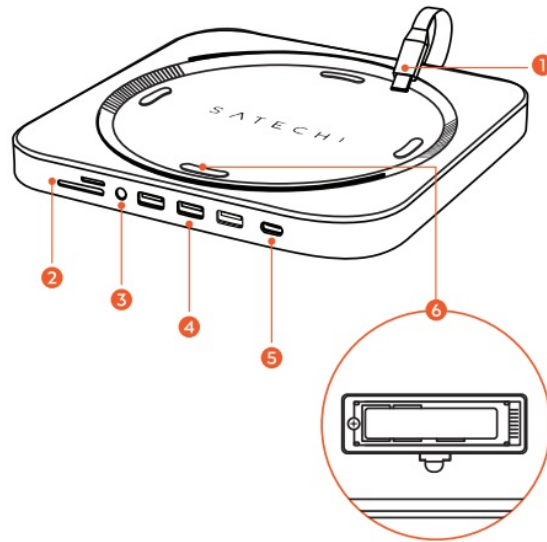


Contents [[hide](#)

- [1 FUNCTIONS](#)
- [2 IMPORTANT](#)
- [3 SSD INSTALLATION](#)
- [4 PLUG & PLAY](#)
- [5 FCC](#)
- [6 Documents / Resources](#)
- [7 Related Posts](#)

FUNCTIONS

FONCTIONS

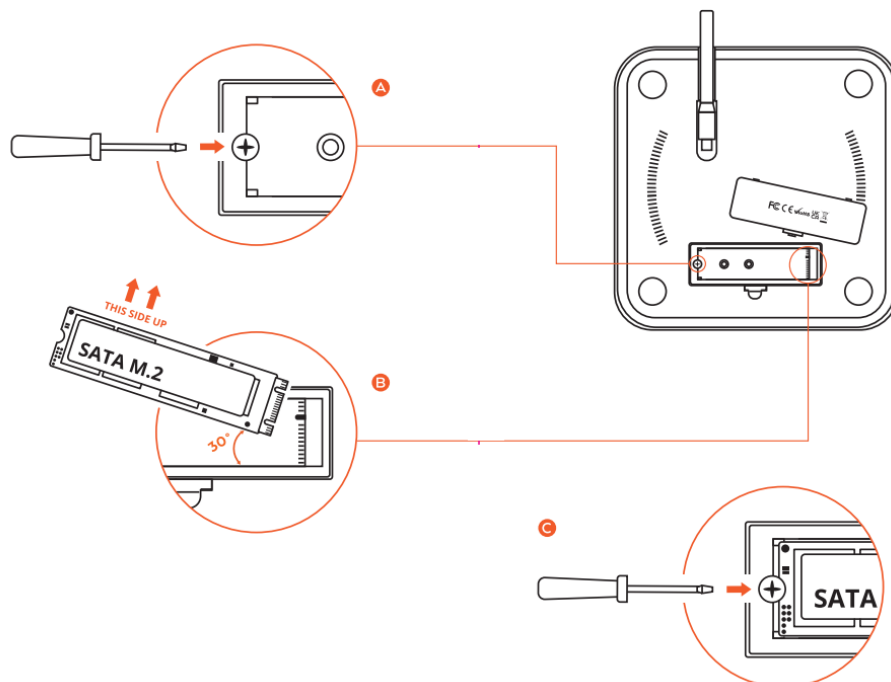


1. Built-in USB-C Connector
2. SD & Micro SD Card Slots
3. Audio Jack Port
4. 3X USB Type-A Ports
5. USB Type-C Port
6. M.2 SATA SSD Card Enclosure

IMPORTANT

- We recommend customers use genuine cables when they are
- iPad Pro will only sync via USB-A due to its power wattage trying to sync. requirement for syncing.
- The USB ports are not designed for charging, only for device syncing, data transfer, and USB peripherals.

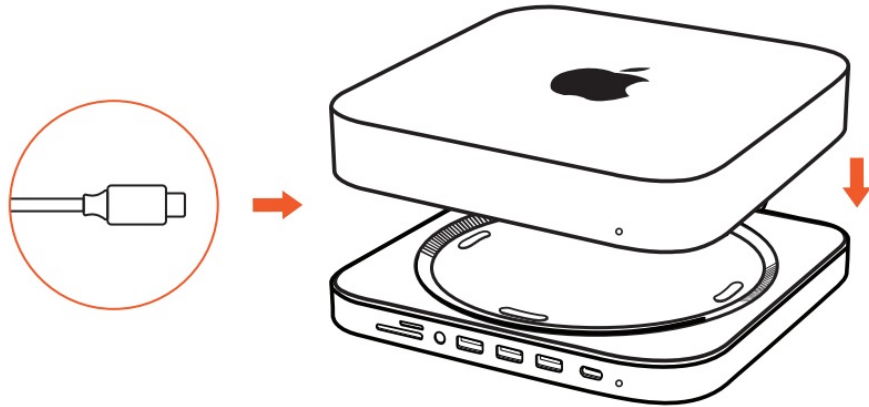
SSD INSTALLATION



NOTE:

- ONLY COMPATIBLE WITH SATA M.2 DRIVE U

PLUG & PLAY



1. Connect to your Mac Mini
2. Connect your devices



This device complies with part 15 of the FCC results.
Operation is subject to the following two conditions:

1. This device may not cause harmful interference and
2. This device must accept any interference received, including interference that may cause undesired operation.

Note: This equipment has been tested and found to comply with the limits for a Class B digital device, pursuant to Part 15 of the Federal Communications Commission (FCC) rules. These limits are designed to provide reasonable protection against harmful interference in a residential installation. This equipment generates, uses, and can radiate radio frequency energy and, if not installed and used in accordance with the instructions, may cause harmful interference to radio communications. However, there is no guarantee that interference will not occur in a particular installation. If this equipment does cause harmful interference to radio or television reception, which can be determined by turning the equipment off and on, the user is encouraged to try to correct the interference by one or more of the following measures:

- 1.1. Reorient or relocate the receiving antenna
- 1.2. Increase the separation between the equipment and receiver
- 1.3. Connect the equipment into an outlet on a circuit different from that to which the receiver is connected
- 1.4. Consult the dealer or an experienced radio/TV technician for help

Changes or modifications not expressly approved by the manufacturer could void the user's authority to operate the equipment.



CE DECLARATION OF CONFORMITY

Satechi declares that this product is in compliance with the essential requirements and other relevant provisions of applicable EC directives. For Europe, a copy of the Declaration of Conformity for this product may be obtained by visiting www.satechi.net/doc



WEEE Information

According to the WEEE (Waste Electrical and Electronic Equipment) Directive, do not dispose of this product as household waste or commercial waste. Waste electrical and electronic equipment should be appropriately collected and recycled as required by practices established for your country. For information on recycling of this product, please contact your local authorities, your household waste disposal service, or the shop where you purchased the product.



support@satechi.com



+1 858 268 1800

[↑ www.satechi.com](http://www.satechi.com)

Documents / Resources



[SATECHI ST-UCICHS Stand Hub for MAC Mini with SSD Enclosure](#) [pdf] User Manual
ST-UCICHS, Stand Hub for MAC Mini with SSD Enclosure, ST-UCICHS Stand Hub for MAC Mini with SSD Enclosure