



# SATECHI ST-HXRSDM Mobile XR Hub With microSD User Manual

[Home](#) » [SATECHI](#) » SATECHI ST-HXRSDM Mobile XR Hub With microSD User Manual 

## Contents

- [1 SATECHI ST-HXRSDM Mobile XR Hub With microSD](#)
- [2 FUNCTIONS](#)
- [3 FCC STATEMENT](#)
- [4 Documents / Resources](#)
  - [4.1 References](#)
- [5 Related Posts](#)

S A T E C H I

## SATECHI ST-HXRSDM Mobile XR Hub With microSD



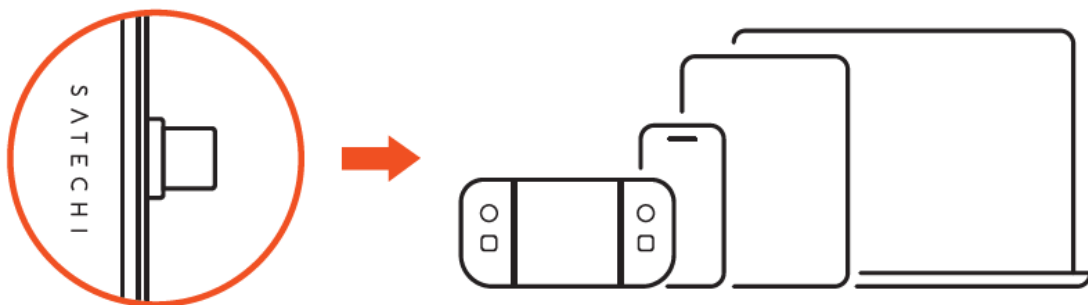
## IMPORTANT:

- When outputting video to external monitors, some USB-C based monitors may only support 4K/30Hz resolution.
- Unplug connected peripherals before disconnecting power.
- Host device must support video output and power delivery over USB-C for full compatibility.

## COMPATIBILITY

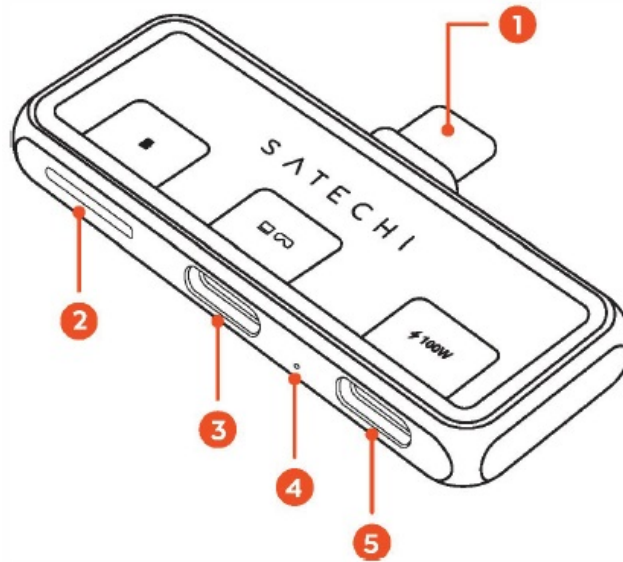
- XR/AR Glasses
- Host Devices
  - iPhone 16 Pro/Pro Max
  - iPhone 15 Pro/Pro Max
  - Android Smartphones {USB-C}
  - iPad Pro/Air
  - Android Tablet (USB-C)
  - Steam Deck
  - Nintendo Switch
  - Mac Book Pro/ Air
  - Windows Laptops

## PLUG & PLAY



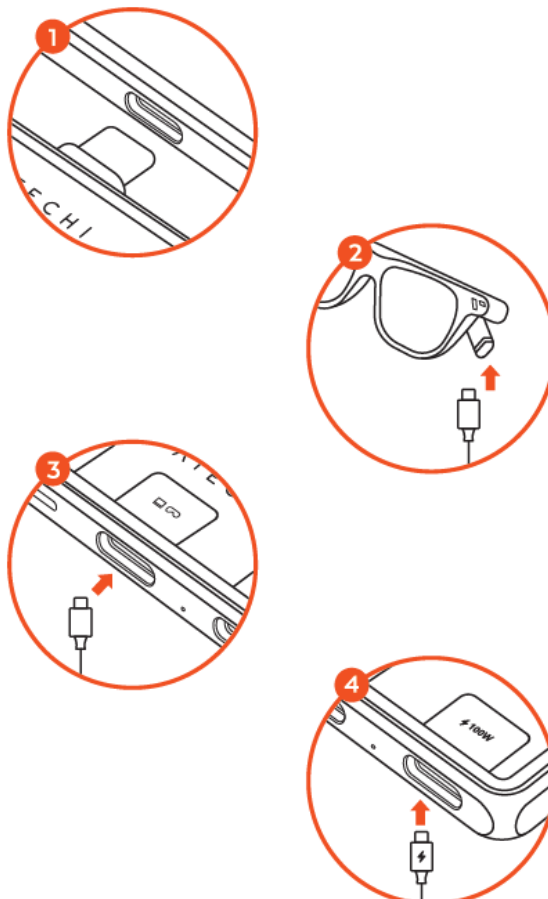
1. Connect to a USB-C host device.
2. Connect your devices.

## FUNCTIONS



1. USB-C Connector
2. MicroSD Card Reader (up to 33MB/s)
3. USB-C Video & Data Port (up to 4K/60Hz\*) (10Gbps)
4. LED Indicator
5. USB-C PD Port (up to 1 DOW) (USB2.0 Audio)

## CONNECTING TOXR/AR GLASSES



1. Connect Mobile XR Hub to your host device.

2. Connect USB-C cable to XR/AR glasses.
3. Connect the other end of the cable to the USB-C port
4. It is recommended to connect power to your device to prevent battery drainage.

**Note:** USB-C cable not included.

## FCC STATEMENT

This device complies with part 15 of the FCC results. Operation is subject to the following two conditions:

1. This device may not cause harmful interference and
2. This device must accept any interference received, including interference that may cause undesired operation.

**Note:** This Equipment has been tested and found to comply with the limits for a class B digital device, pursuant to Part 15 of the Federal Communications Commission (FCC) rules. These limits are designed to provide reasonable protection against harmful interference in a residential installation. This equipment generates, uses, and can radiate radio frequency energy and, if not installed and used in accordance with the instructions, may cause harmful interference to radio communications. However, there is no guarantee that interference will not occur in a particular installation. If this equipment does cause harmful interference to radio or television reception, which can be determined by turning the equipment off and on, the user is encouraged to try to correct the interference by one or more of the following measures:

- Reorient or relocate the receiving antenna
- Increase the separation between the equipment and receiver
- Connect the equipment into an outlet on a circuit different from that to which the receiver is connected
- Consult the dealer or an experienced radio/TV technician for help
- Changes or modifications not expressly approved by the manufacturer could void the user's authority to operate the equipment.

## DECLARATION OF CONFORMITY

Satechi declares that this product is in compliance with the essential requirements and other relevant provisions of applicable EC directives. For Europe, a copy of the Declaration of Conformity for this product may be obtained by visiting <https://satechi.net/support/doc>

## WEEE Information

According to the WEEE (Waste Electrical and Electronic Equipment) Directive, do not dispose of this product as household waste or commercial waste. Waste electrical and electronic equipment should be appropriately collected and recycled as required by practices established for your country. For information on recycling of this product, please contact your local authorities, your household waste disposal service, or the shop where you purchased the product.


## CAN ICES-003 (B)/NMB-003(B)

This Class B digital apparatus complies with Canadian ICES-003. (Cet appareil numérique de la Classe B conforme à la norme NMB-003 du Canada).

## AUSTRALIAN CONSUMER LAW

Our goods come with guarantees that cannot be excluded under the Australian Consumer Law. You are entitled to a replacement or refund for a major failure and compensation for any other reasonably foreseeable loss or damage. You are also entitled to have the goods repaired or replaced if the goods fail to be of acceptable quality and the failure does not amount to a major failure.

Documents / Resources

	<a href="#">SATECHI ST-HXRSDM Mobile XR Hub With microSD</a> [pdf] User Manual ST-HXRSDM Mobile XR Hub With microSD, ST-HXRSDM, Mobile XR Hub With microSD, Hub With microSD, microSD
---	--

References

- [User Manual](#)

[Manuals+](#), [Privacy Policy](#)

This website is an independent publication and is neither affiliated with nor endorsed by any of the trademark owners. The "Bluetooth®" word mark and logos are registered trademarks owned by Bluetooth SIG, Inc. The "Wi-Fi®" word mark and logos are registered trademarks owned by the Wi-Fi Alliance. Any use of these marks on this website does not imply any affiliation with or endorsement.