

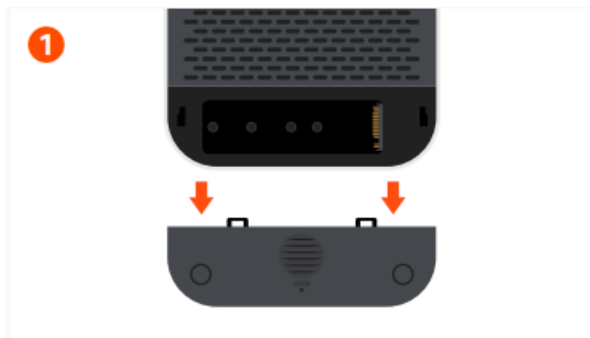
# SATECHI M4 Stand and Hub with NVMe Enclosure User Guide

## Contents

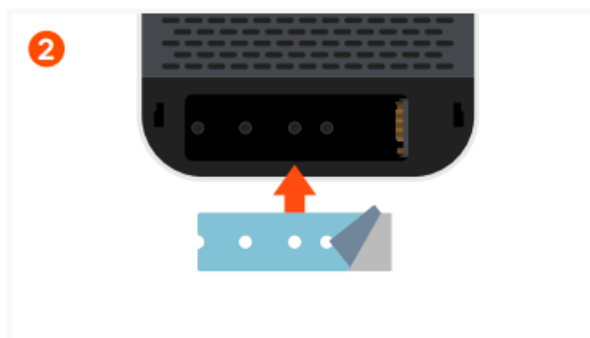
- 1 M4 Stand and Hub with NVMe Enclosure
  - 1.1 MAC MINI M4 STAND & HUB WITH NVME ENCLOSURE QUICK GUIDE INSTALLING NVME SSD
- 2 PORTS AND CONNECTORS
- 3 Documents / Resources
  - 3.1 References
- 4 Related Posts

## M4 Stand and Hub with NVMe Enclosure

### MAC MINI M4 STAND & HUB WITH NVME ENCLOSURE QUICK GUIDE INSTALLING NVME SSD

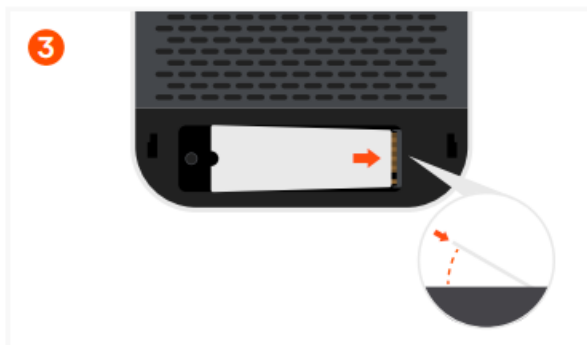


Remove the SSD enclosure cover on the bottom of the stand.



Before installing NVMe SSD, first apply the included thermal tape.

The side with the blue film should be in contact with the SSD. The clear film adheres to the enclosure



Insert the SSD at a slight angle (35-45°) and ensure it is fully seated in the PCIe slot.

Important: This stand is not compatible with SSDs that have pre-installed heat sinks or are double-sided.

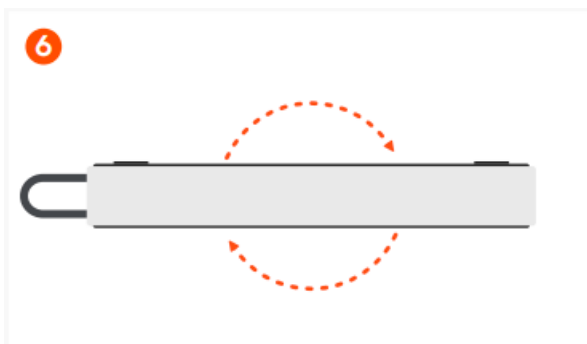


Secure the SSD using the included screwdriver and screw.

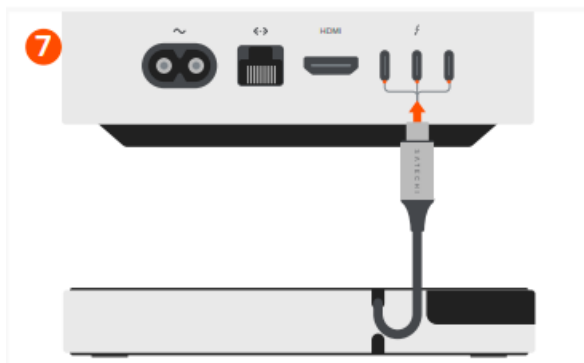
**Tip:** To prevent stripping the screw, do not overtighten



Carefully reattach the enclosure cover: insert the side clips first, then slide the door into place.



Flip the stand back over.

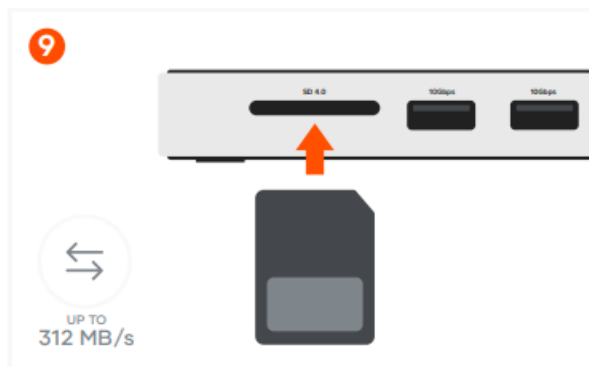


Place the stand on a flat surface and use the USB-C cable to connect to your M4 Mac Mini.  
Supports Mac Mini (M4, 2024). Does not support M2, M1, or 2018 Mac Mini or Mac Studio models.



Easily access the power button through the cutout.

## PORTS AND CONNECTORS



SD 4.0 Card Reader (up to 312 MB/s)  
High-speed data transfer for SD cards.  
Insert the card with the label facing up and the pins facing down.



Two USB-A 10Gbps (up to 1250 MB/s)

Two high-speed data transfer ports for external drives.  
These ports do not support charging or CD drives, including the Apple SuperDrive.



**USB 2.0 Port (up to 60 MB/s)**

Ideal for low-power devices and peripherals (e.g., USB dongles, wired keyboards).  
This port does not support charging or CD drives, including the Apple SuperDrive.

**Documents / Resources**

	<p><a href="#">SATECHI M4 Stand and Hub with NVMe Enclosure</a> [pdf] User Guide M4, M4 Stand and Hub with NVMe Enclosure, Stand and Hub with NVMe Enclosure, Hub with NVMe Enclosure, NVMe Enclosure</p>
--	---

**References**

- [User Manual](#)

[Manuals+](#), [Privacy Policy](#)

This website is an independent publication and is neither affiliated with nor endorsed by any of the trademark owners. The "Bluetooth®" word mark and logos are registered trademarks owned by Bluetooth SIG, Inc. The "Wi-Fi®" word mark and logos are registered trademarks owned by the Wi-Fi Alliance. Any use of these marks on this website does not imply any affiliation with or endorsement.