

Satechi 8K USB C Multiport Adapter With Ethernet



## Satechi 8K USB C Multiport Adapter With Ethernet User Guide

[Home](#) » [SATECHI](#) » Satechi 8K USB C Multiport Adapter With Ethernet User Guide 

### Contents

- [1 Satechi 8K USB C Multiport Adapter With Ethernet](#)
- [2 Specifications](#)
- [3 FAQ](#)
- [4 Product Using Instruction](#)
- [5 Documents / Resources](#)
  - [5.1 References](#)
- [6 Related Posts](#)

S A T E C H I

### Satechi 8K USB C Multiport Adapter With Ethernet



## Specifications

Feature	Description
USB-C Connection	Connect the adapter to a compatible USB-C port on your host device.
HDMI Output	Use the HDMI port to output video to an external monitor or display – up to 8K at 30Hz or 4K at 60Hz/120Hz/144Hz. Computer, cable, and monitor must support 8K. 8K video output not supported on Mac devices.
USB-C PD Port	Use the USB-C PD port to charge your device up to 100W. Approximately 15W is used for adapter operation. Video and data transfer not supported.
USB-C Data Ports	USB-C data ports allow for transfer data at up to 10 Gbps (A, B, C) and 5 Gbps (D) speeds. Does not support video output, charging or CD readers including the Apple SuperDrive.
Ethernet Port	Connect an Ethernet cable to the adapter's Gigabit Ethernet port for up to 1 Gbps internet connection.
SD Card Reader	SD card reader supports up to UHS-II read/write speeds of up to 312 MB/s.

## FAQ

- **How do I connect the adapter to my device?**

- Connect the adapter to a compatible USB-C port on your host device.

- **Can I charge my device using this adapter?**

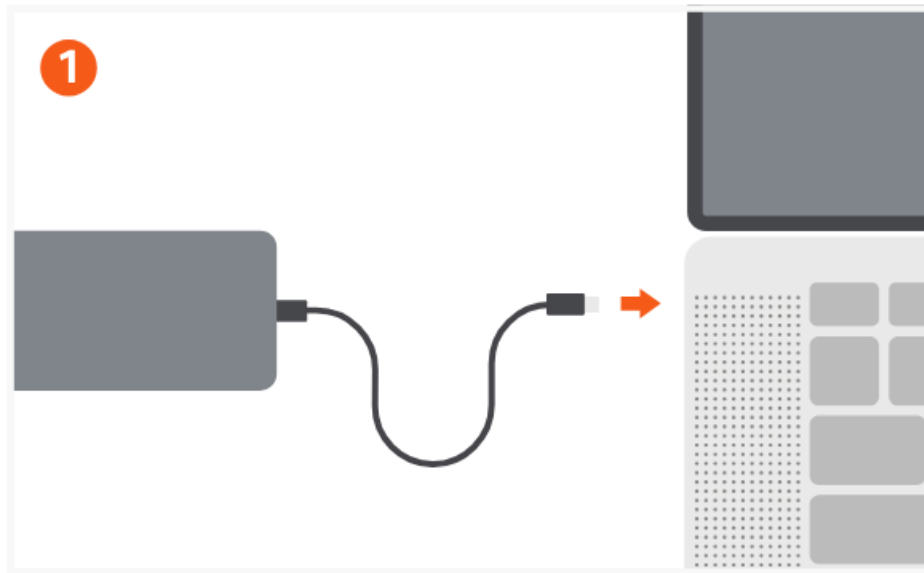
- Yes, you can charge your device using the USB-C PD port, which supports up to 100W. Keep in mind that ~15W is used for adapter operation.

- **Does the adapter support 8K video output?**

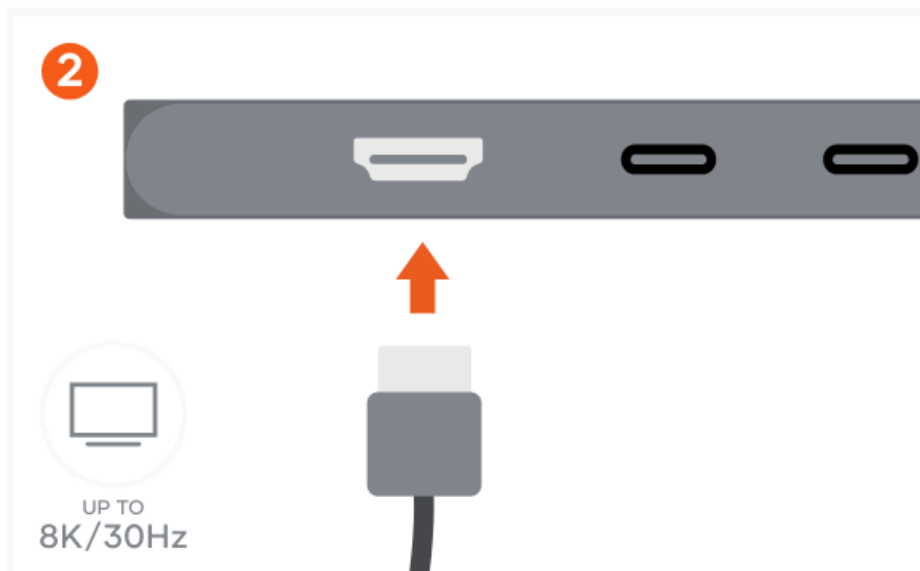
- The adapter supports 8K video output on compatible devices, but this feature is not supported on Mac devices.

## Product Using Instruction

1. Connect the adapter to a compatible USB-C port on your host device.



2. Use the HDMI port to output video to an external monitor or display – up to 8K at 30Hz or 4K at 60Hz/120Hz/144Hz. The computer, cable, and monitor must support 8K. 8K video output not supported on Mac devices



3. Use the USB-C PD port to charge your device up to 100W. ~15W is used for adapter operation. Video and data transfer not supported.



4. USB-C data ports allow for the transfer data at up to 10 Gbps (A, B, C) and 5 Gbps (D) speeds. Does not

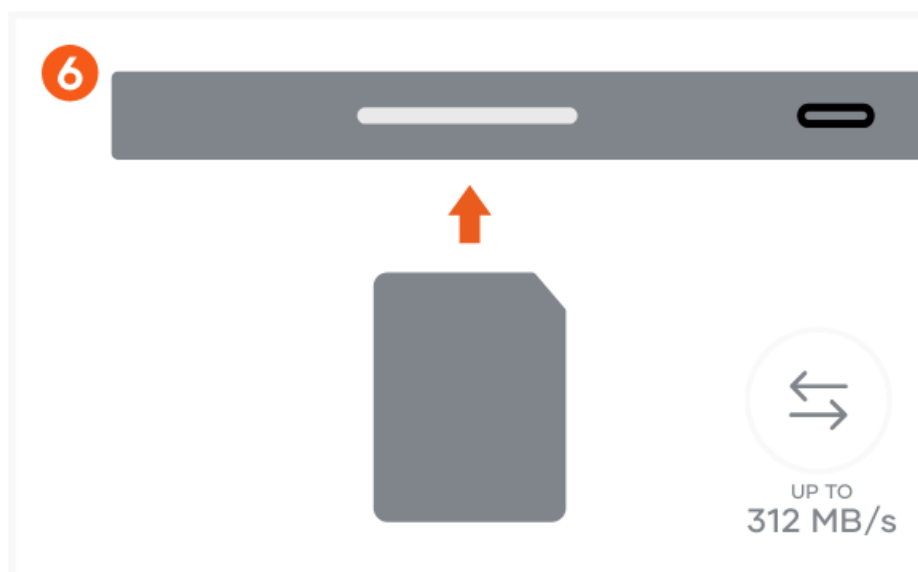
support video output, charging or CD readers including the Apple SuperDrive

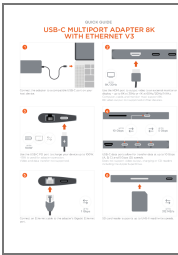


5. Connect an Ethernet cable to the adapter's Gigabit Ethernet port.



6. SD card reader supports up to UHS-II read/write speeds.





[Satechi 8K USB C Multiport Adapter With Ethernet](#) [pdf] User Guide  
8K USB C Multiport Adapter With Ethernet, 8K, USB C Multiport Adapter With Ethernet, Multipor  
t Adapter With Ethernet, Adapter With Ethernet, Ethernet

References

- [User Manual](#)

[Manuals+](#), [Privacy Policy](#)

This website is an independent publication and is neither affiliated with nor endorsed by any of the trademark owners. The "Bluetooth®" word mark and logos are registered trademarks owned by Bluetooth SIG, Inc. The "Wi-Fi®" word mark and logos are registered trademarks owned by the Wi-Fi Alliance. Any use of these marks on this website does not imply any affiliation with or endorsement.