



# SATECHI 883275 USB-C On-The-Go Multiport Adapter Instructions

[Home](#) » [SATECHI](#) » SATECHI 883275 USB-C On-The-Go Multiport Adapter Instructions 

## SATECHI 883275 USB-C On-The-Go Multiport Adapter Instructions

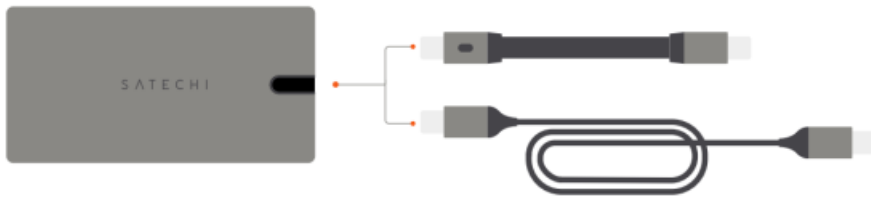


### Contents

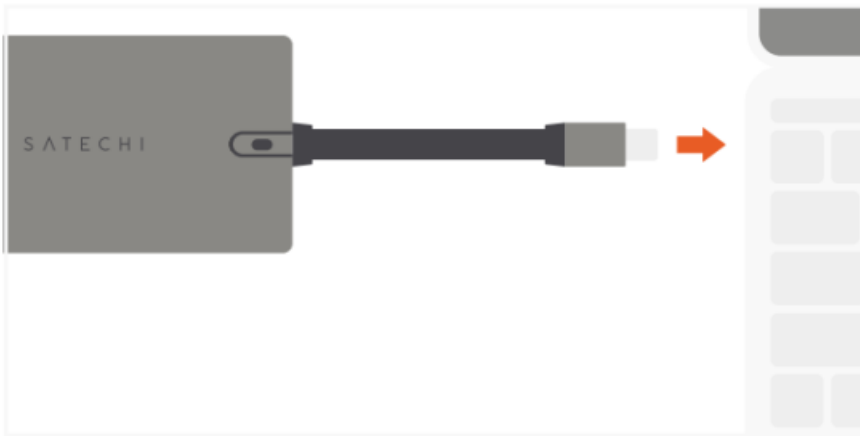
- [1 Installation Instructions](#)
- [2 Documents / Resources](#)
- [3 Related Posts](#)

## Installation Instructions

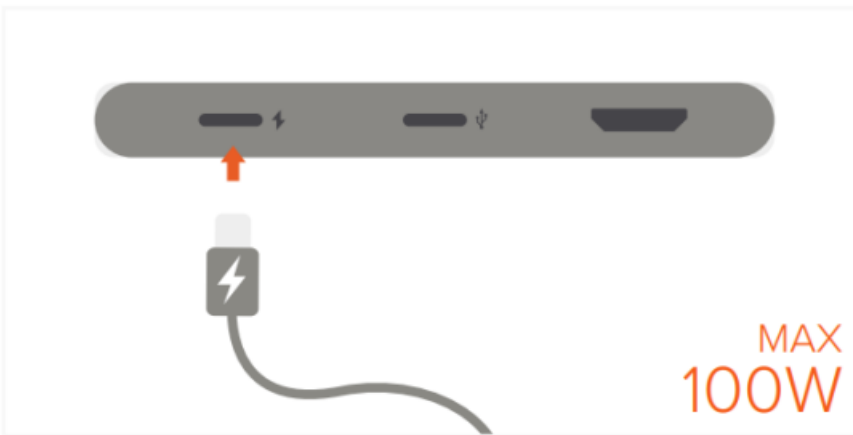
1. Attach one of the included cables to the adapter's USB-C port.  
Shorter cable will slide in/out from the adapter. Longer cable is also included to use as a docking station



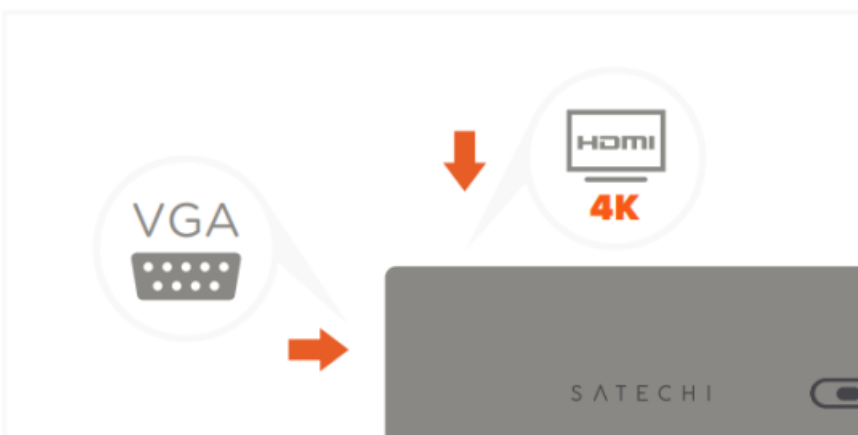
2. Connect the adapter to a USB-C PD or Thunderbolt 3 port on your device.



3. Connect a PD charger to the adapter's USB-C PD charging port. Max output 100W



4. Connect a direct HDMI or VGA cable to its respective port on the adapter to output display.  
HDMI supports up to 4K 60Hz, VGA up to 1080p 60Hz Connect one display at a time or mirrored together



5. Connect a RJ45 cable to the adapter's Ethernet port for wired network access.  
Up to 10/100/1000 Mbps



6. Connect USB peripherals to the adapter's USB-C and USB-A data ports.

Data ports do not support charging or video output

Does not support Apple SuperDrive

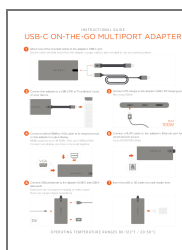


7. Insert microSD or SD cards into card reader slots.



**OPERATING TEMPERATURE RANGES 86-122°F / 30-50°C**

## Documents / Resources



[SATECHI 883275 USB-C On-The-Go Multiport Adapter](#) [pdf] Instructions  
883275, USB-C On-The-Go Multiport Adapter

