



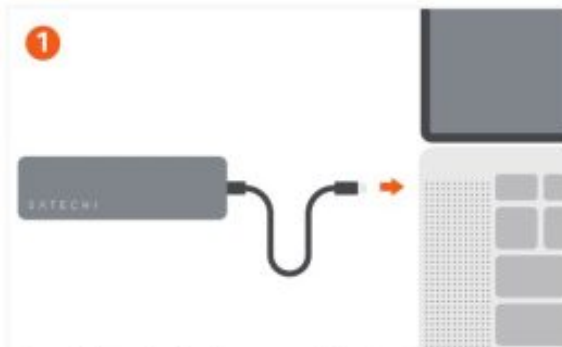
Satechi 6 in 1 USB-C Slim Multiport Adapter User Guide

[Home](#) » [SATECHI](#) » Satechi 6 in 1 USB-C Slim Multiport Adapter User Guide 

Contents

- [1 Satechi 6 in 1 USB-C Slim Multiport Adapter User Guide](#)
- [2 Documents / Resources](#)
 - [2.1 References](#)
- [3 Related Posts](#)

Satechi 6 in 1 USB-C Slim Multiport Adapter User Guide



1
Connect the adapter to a compatible host device.
LED indicator would turn on once connected.



2
Connect USB-C charging cable to the adapter's USB-C PD charging port - up to 100W (15W used for operation).
Does not support video output.
Does not support CD/ DVD Drives or Apple SuperDrive.



3
Connect HDMI cable from the adapter to a 4K HDMI-equipped display.
Up to 4K at 60Hz.
Only supports direct HDMI connections.



4
Insert micro/SD cards into adapter's card reader slots.
Cards can be read simultaneously.
Supports UHS-I read/write speeds.



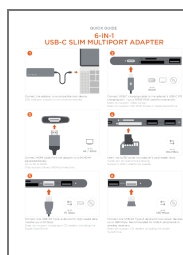
Connect one USB 3.0 Type-A device for high speed data transfer up to 10 Gbps. Does not support charging or CD readers including the Apple SuperDrive.



Connect one USB 2.0 Type-A device for low-power devices up to 480 Mbps. Recommended for USB-A peripherals or wireless receivers. Does not support CD readers including the Apple SuperDrive.

Read More About This Manual & Download PDF:

Documents / Resources



[Satechi 6 in 1 USB-C Slim Multiport Adapter](#) [pdf] User Guide

6 in 1 USB-C Slim Multiport Adapter, USB-C Slim Multiport Adapter, Slim Multiport Adapter, Multiport Adapter, Adapter

References

- [User Manual](#)

[Manuals+](#), [Privacy Policy](#)

This website is an independent publication and is neither affiliated with nor endorsed by any of the trademark owners. The "Bluetooth®" word mark and logos are registered trademarks owned by Bluetooth SIG, Inc. The "Wi-Fi®" word mark and logos are registered trademarks owned by the Wi-Fi Alliance. Any use of these marks on this website does not imply any affiliation with or endorsement.