



## saro EVRX 2000 Refrigerated Table Top Display Instruction Manual

[Home](#) » [saro](#) » saro EVRX 2000 Refrigerated Table Top Display Instruction Manual 



**Gastro-Products**  
**Operating instructions for refrigerated table top display**  
**Model EVRX 2000/330**  
**Order No.: 465-2015**



## Contents

<a href="#">1 INTRODUCTION</a>
<a href="#">2 SCOPE OF SUPPLY</a>
<a href="#">3 STANDARDS AND DIRECTIVES</a>
<a href="#">4 TECHNICAL OVERVIEW</a>
<a href="#">5 EXPLANATION OF SYMBOLS</a>
<a href="#">6 GENERAL INFORMATION</a>
<a href="#">7 UNPACK</a>
<a href="#">8 INITIAL CLEANING</a>
<a href="#">9 CONNECTION</a>
<a href="#">10 INSTALLATION</a>
<a href="#">11 GLASS ASSEMBLY GUIDE</a>
<a href="#">12 GLASS MOUNTING</a>
<a href="#">13 TURN ON</a>
<a href="#">14 FILLING</a>
<a href="#">15 DEFROST</a>
<a href="#">16 CLEANING, CARE &amp; MAINTENANCE</a>
<a href="#">17 PROLONGED SHUTDOWN OF THE UNIT</a>
<a href="#">18 SMALL DISTURBANCES</a>
<a href="#">19 THE DEVICE DOES NOT WORK.</a>
<a href="#">20 THE UNIT DOES NOT REACH THE DESIRED TEMPERATURE</a>
<a href="#">21 WIRING DIAGRAM</a>
<a href="#">22 EXPLODED VIEW</a>
<a href="#">23 SPARE PARTS LISTW</a>
<a href="#">24 DISPOSAL</a>
<a href="#">25 Documents / Resources</a>
<a href="#">25.1 References</a>
<a href="#">26 Related Posts</a>

## INTRODUCTION

Before commissioning this device, read these operating instructions carefully and carefully and observe the information given therein.

This manual contains information on the structure, installation, operation, maintenance, cleaning and possible disposal of this unit.

This instruction manual is an integral part of the unit and should be kept in the vicinity of the unit at all times, accessible to all persons involved in the installation, operation, cleaning or maintenance of this unit.

If the device is passed on to third parties, these operating instructions must be included.

Illustrations in this manual may differ from the original article. We reserve the right to make technical changes to the device.

If these operating instructions are not observed, the safety of the device is no longer guaranteed.

The manufacturer/dealer cannot be held responsible for damage caused by non-observance of these operating instructions.

## SCOPE OF SUPPLY

- 1 refrigerated table top display
- 1 glass attachment with fixing set
- 9 intermediary rails
- 1 operating manual
- 1 operating manual for Dixell digital controller

## STANDARDS AND DIRECTIVES

The device complies with the current standards and Directives of the EU.

If required, we can provide you with the appropriate declaration of conformity.

**Attention!!! This show display was developed and built for commercial use. It is only intended for refrigeration and storage of food such as vegetables, salads, fruit etc...**

## TECHNICAL OVERVIEW

MODEL ]	EVRX 2000/330
Order No.	465-2015
Material Gehause	stainless steel, glass attachment
Dimensions outside (mm)	2000 x 335 x 439
Weightnet. (kg)	38
Connection (V /Hz./kW)	230V / 50Hz – 0,11
Temperature range (C°)	+2 / +8
coolant (type,quantity)	R600a / 40g
Foaming agent, thickness(mm)	Cyclopentane, 60
Glass thickness of glass top	6 mm
GN	For 10 x 1/4 GN-pans (not included)
Defrost	Automatic
Noice level (db)	70
Thermostat type	Digital (DIXELL)
energy consumption (kWh/24h)	2,1
EAN-Code	4017337 057603

## EXPLANATION OF SYMBOLS



**v WARNING!** This symbol indicates dangers which can lead to injuries. It is imperative that you adhere strictly to the instructions on occupational safety and be particularly careful in such cases.



**WARNING: DANGER FROM ELECTRIC CURRENT!** This symbol draws attention to dangerous situations caused by electric current. Failure to observe the safety instructions may result in injury or death!



**WARNING: HOT SURFACE-RISK OF BURNING!** This symbol indicates the hot surface of the unit, during operation and thereafter. Risk of burns if ignored!



**WARNING: FLAMMABLE SUBSTANCES -RISK OF BURNING!** This symbol indicates that there are dangers for life and health of persons due to flammable substances. Risk of burns if ignored!

## GENERAL INFORMATION

- Before initial operation, read these operating instructions carefully and observe the information contained therein.
- Keep these operating instructions handy in the vicinity of the unit.
- The manufacturer/dealer cannot be held responsible for damage caused by non-observance of these operating instructions.
- The safety of the device is no longer guaranteed if these operating instructions are not observed.
- When passing on the device to third parties, these operating instructions must be provided.
- The appliance is intended only for refrigeration and preparation of food. Misuse may result in damage and loss of warranty.
- This device must not be operated by children or persons with limited physical, sensory or mental abilities, as they cannot recognize the dangers of using electrical and/or refrigeration equipment and accidents, fires, explosions, or damage to property can occur.
- Do not use the device outdoors in the rain or in damp rooms.
- After unpacking the device, make sure that everything is in perfect condition. If you discover any damage, do not connect the device, but contact your dealer.
- Check that all components specified in the scope of delivery are present. If this is not the case, contact your dealer.
- Keep the packaging of the device. The device can only be safely transported in its original packaging.
- Please note that all components of the packaging (plastic bags, cardboard, polystyrene parts, etc.) can endanger children and must therefore not be stored near them.
- If it is not possible to store the packaging, separate the various packaging materials and deliver them to the nearest collection point for proper disposal.
- Place the unit in a dry and sufficiently ventilated place.
- Do not place the unit near heat sources such as heating, stove, oven, or open fire or in direct sunlight, as the desired cooling capacity can then no longer be guaranteed.
- The ventilation slots must always be kept clear and must not be covered or blocked.
- Before connecting the device to the power supply and putting it into operation, clean it carefully.
- Do not drill or puncture any holes in the inside or outside of the unit. The cooling circuit could be damaged.
- For hygienic reasons, daily cleaning is recommended.
- The device is neither suitable nor intended for the storage of medicines or highly flammable, flammable or explosive substances.

## SAFETY NOTICES

- Before initial operation, read these operating instructions carefully and observe the information contained therein.
- Incorrect operation and improper handling can lead to malfunctions of the device and injuries to the user.

- Observe the accident prevention regulations applicable to the area of application and the general safety regulations.
- Ensure that the unit stands securely on a dry, non-slip surface that matches the weight of the unit. If the surface is not stable enough, the unit may tip over and cause injury if shelves and products fall out.
- Make sure that the air inlet and exhaust openings on the unit base are always free of impurities. Check them regularly and remove any dust deposits with the help of a vacuum cleaner.
- Do not place the unit on a hot surface.
- Do not tilt the unit more than 45 degrees.
- Do not move the unit during use.
- Before moving the unit, unplug the power cord.
- Make sure that the unit does not tip over when moving. This could result in injury.
- When the unit is back in place, wait two hours before putting it back into operation.
- After longer transport, the device should only be put back into operation after 12 hours.
- Do not let the power cord hang over sharp edges and keep it away from hot objects and open flames.
- Make sure that it is not possible to pull or trip over the cable unintentionally.
- Do not damage, modify, pull, load, bend, crush, twist, or unwind the power cord.
- Protect the device from moisture.
- Do not clean the unit with an open water jet.
- The device must not be immersed in water or other liquids or wetted with liquids.
- No operation of the device by children or persons with limited physical, sensory or mental abilities; or lack of experience and/or knowledge. These persons cannot recognize the dangers of using electrical devices and/or devices that generate heat and can cause accidents, fire or damage to property.
- Always remove the plug from the socket before cleaning or disconnect the device from the power supply; the same applies to prolonged periods of non-use.
- When working with liquids, make sure that no liquids are spilled and get inside the unit. These can transmit electricity!
- To disconnect the unit from the power supply, unplug the power cord or unplug or unplug the associated fuse.
- Always unplug the power cord from the power outlet only by the power plug. • Never touch the device, the cable or the plug with wet hands.
- Grip the door handle when closing the door or drawer of the unit. Touching and closing the door or drawer in other places can lead to trapped fingers and injuries.
- In the event of a fault or malfunction, turn off the unit and unplug it from the wall outlet. Notify your dealer. He will carry out the repair with original spare parts.
- Cooling maintenance may only be carried out by qualified personnel.

**WARNING:  
DANGER OF INJURY!**



Never try to place your fingers, rods, screwdrivers, or other thin objects between the bars of the cold air blower. Behind the protective grille a fan rotates at high speed. There is a risk of injury, electric shock, and damage to or malfunction of the device.



**WARNING: DANGER FROM ELECTRIC CURRENT!!!**

Before connecting to the mains, check that the type of current and the mains voltage correspond to the information on the name plate of the device.

- Make sure that the power cable is free of damage, damaged cable must be replaced by qualified professional.
- Damaged equipment must not be used! In this case, disconnect the device from the power supply and contact your specialist dealer!
- Do not use adapters or extension cords.
- The unit is live as long as it is connected to the power supply.
- The unit does not have a power switch. Before the unit can be cleaned, the mains plug must first be removed!
- The device is intended for indoor operation. Outdoor use, in the rain, can lead to short-circuits, leakage current or electric shocks.
- If the unit gets wet, unplug it immediately and have it checked by a specialist before the next start-up. Risk of fatal injury from electric shock!
- Never attempt to open or repair the device yourself.  
Risk of fatal injury from electric shock!



#### **WARNING: DANGER OF FIRE!**

- The cooling circuit of this unit contains the refrigerant isobutane (R600a). This natural gas, with a high level of environmental compatibility, is flammable and can escape if the cooling circuit is damaged. Make sure that no parts of the cooling circuit are damaged! If the coolant circuit is damaged, avoid open fire and ignition sources and ensure good ventilation!



#### **WARNING: RISK OF INJURY!**

- Packaging materials, such as foils, polystyrene or small parts of the transport safety device, can be dangerous for children! There is danger of injury or suffocation! Keep the packaging material away from children!

## **UNPACK**

- Make sure that the packaging is undamaged. The device as well as the accessories are protected and / or fixed for transport.  
[After opening the packaging, remove the packaging material and any transport securing devices in the form of adhesive tapes or cable ties.
- Stainless steel is often effectively protected by a plastic film for production and transport. Please remove these before using the article, from top to bottom and as soon as possible. In the long run, the films can only be removed with great difficulty, especially when exposed to sunlight. Foil or adhesive residues could then remain on the surface. These must be removed without residue to protect the passive layer and to protect the stainless steel against corrosion.
- Then check the completeness of the delivery and make sure that neither the device nor the accessories are damaged.
- Keep the packaging of the device. The device can only be safely transported in its original packaging. If it is not possible to store the packaging, separate the various packaging materials and deliver them to the nearest collection point for proper disposal.
- Although the device was cleaned inside before it was shipped, it is advisable to clean it again before you fill it with goods.



After delivery or transport of the device, connect it only after the device has been stationary for at least 12 hours. This is absolutely necessary so that the coolant can collect in the compressor.

## INITIAL CLEANING

Clean the refrigerated tabletop display with a slightly moistened cloth on the outside and with a commercially available cleaning agent on the inside. Use very little water and under no circumstances aggressive agents or a scouring sponge. Do not spray the unit with a water jet, steam jet or high-pressure cleaner.

Rub the device dry with a soft cloth. Avoid getting near sharp parts (condenser, evaporator, etc.) during cleaning with bare hands. If necessary, use safety gloves.

## CONNECTION

Connect the device only to a grounded safety socket and a 230 Volt connection.

Before connecting the device, make sure that the voltage and frequency of the power supply correspond to the information on the name plate! Other voltages can lead to overheating of the device!

After a power failure or if the device has been disconnected from the power supply, wait at least 5 minutes before reconnecting the device and putting it into operation!

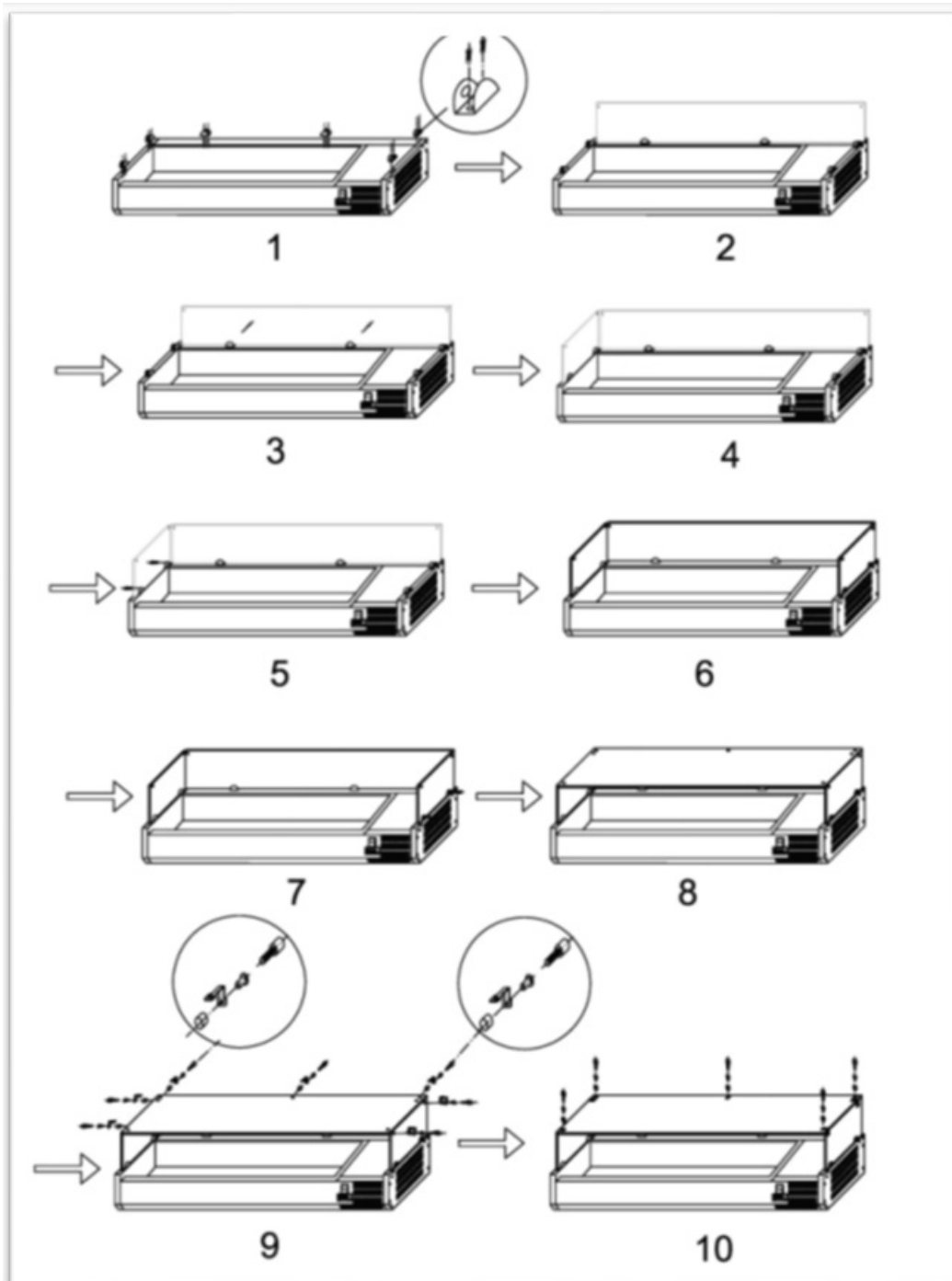
If the unit is restarted immediately after it has been switched off, the fuse may trip and the current flow may be interrupted. In addition, the compressor may be overloaded and damaged.

## INSTALLATION

**Note:** If the unit has not been stored or moved in an upright position, let it stand upright for approximately 12 hours before operation. If in doubt allow the appliance to stand.

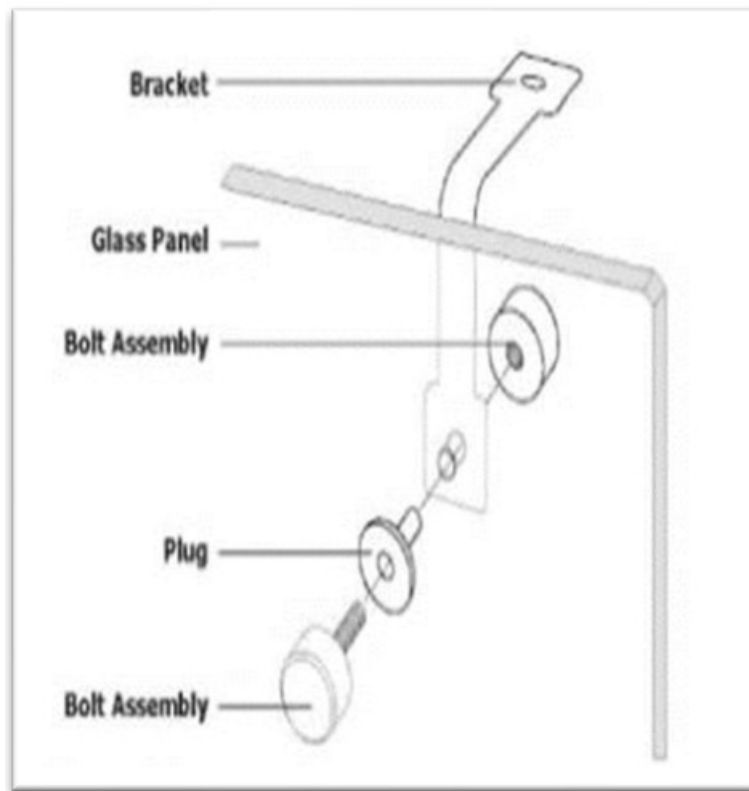
1. Remove the appliance from the packaging. Make sure that all protective plastic film and coatings are thoroughly removed from all surfaces.
2. Maintain 20cm (7 inches) between the unit and walls or other objects for ventilation. Increase this distance if the obstacle is a heat source.
3. Level the appliance by adjusting the screw feet.

## GLASS ASSEMBLY GUIDE



Pic. 1 Attach glass plates





Pic. 2 Fixing glass panels

## GLASS MOUNTING

1. Screw the glass holders to the edge of the appliance – see fig. 1, P.1.  
 Note: Make sure that the hole in the glass holder for the grub screw faces inwards.
2. Slide the back into the glass holders with the holes in the glass facing upwards (P.2).
3. Screw a grub screw into each glass holder to secure the back (P.3).  
 Note: Make sure the soft end of the grub screw contacts the glass at the end.
4. Slide the side panels into the glass holders with the holes in the glasses facing upwards (P. 4 – 7).  
 Note: Make sure that the screw hole that is furthest from the edge of the glass faces the back of the appliance.  
 Screw a grub screw into each glass mount to secure the sides (P. 3, 7). 6.
5. Insert the plastic plugs into the holes (see fig. 2).  
 Screw the retaining brackets with the bolts on the inside of each pane.  
 Note: Make sure that the short end of the screws is on the outside of the glass.
6. Place the top glass panel on the brackets, making sure that all the holes are on top of each other (see fig. 1, p. 8 – 10).  
 Insert the plastic plugs and fix the top glass plate with the screws.

## TURN ON

1. Ensure the power switch is set to [O] and turn on at the socket.
2. Switch on the power [I]. The current temperature within the appliance is displayed.

## FILLING

- After cleaning, switching on, selecting the temperature and covering the GN container openings, the appliance

is ready for operation after approx. 20-30 minutes (without filling).

- Only use GN containers up to a maximum depth of 150 mm to maintain air circulation.
- It is best to cover any gaps between the GN containers during operation with the filling bars supplied to save energy. Filler bars in various widths can be ordered separately.

## DEFROST

The appliance will automatically run a defrost cycle every six hours.

**Note:** The cycle starts from the time the appliance is initially powered up.

To manually defrost the appliance:

1. Press and hold the DEFROST button for 5 seconds.
2. The defrost cycle will start immediately and the Defrost LED illuminates. The defrost will last up to 30 minutes.  
Note: Starting a manual defrost also resets the automatic defrost timer. The next automatic defrost will start six hours after the manual defrost has finished.
3. Defrost water is collected in the defrost water tray.

## CLEANING, CARE & MAINTENANCE

- Switch off and disconnect from the power supply before cleaning.
- Clean the interior of the appliance as often as possible.
- Do not use abrasive cleaning agents. These can leave harmful residues.
- Clean the door seal with water only.
- Clean door sealing only with water
- Always wipe dry after cleaning.
- Do not allow water used in cleaning to run through the drain hole into the evaporation pan.
- Take care when cleaning the rear of the appliance. Sharp edges can cut.
- An agent or qualified technician must carry out repairs if required.

## PROLONGED SHUTDOWN OF THE UNIT

If the cooling unit is not used for a long time, the following measures must be taken:

- Disconnect the device from the mains, i.e. pull out the mains plug.
- Clean everything carefully and dry well.
- Cover the unit with an air-permeable material.

## SMALL DISTURBANCES

Often malfunctions can be eliminated quickly without having to contact customer service. We therefore recommend checking the following before consulting a specialist:

### THE DEVICE DOES NOT WORK.

- Check that the mains plug is correctly plugged into the socket.
- Check the cable. If it is damaged, it must be replaced by a specialist.

## THE UNIT DOES NOT REACH THE DESIRED TEMPERATURE

Check the following:

- Whether the main switch is switched on.
- Whether the temperature is set correctly.
- Whether the device is in a defrosting phase or shortly afterwards.
- Whether the condenser is clogged with dust.
- Whether the device is located close to heat sources or whether the maximum ambient temperature has been exceeded.
- Whether the condenser unit is not sufficiently ventilated.
- Whether the food was too hot or too numerous or poorly distributed.
- Whether the ventilation slots in the interior are covered, what hinders the air circulation.

THE DEVICE IS LOUD.

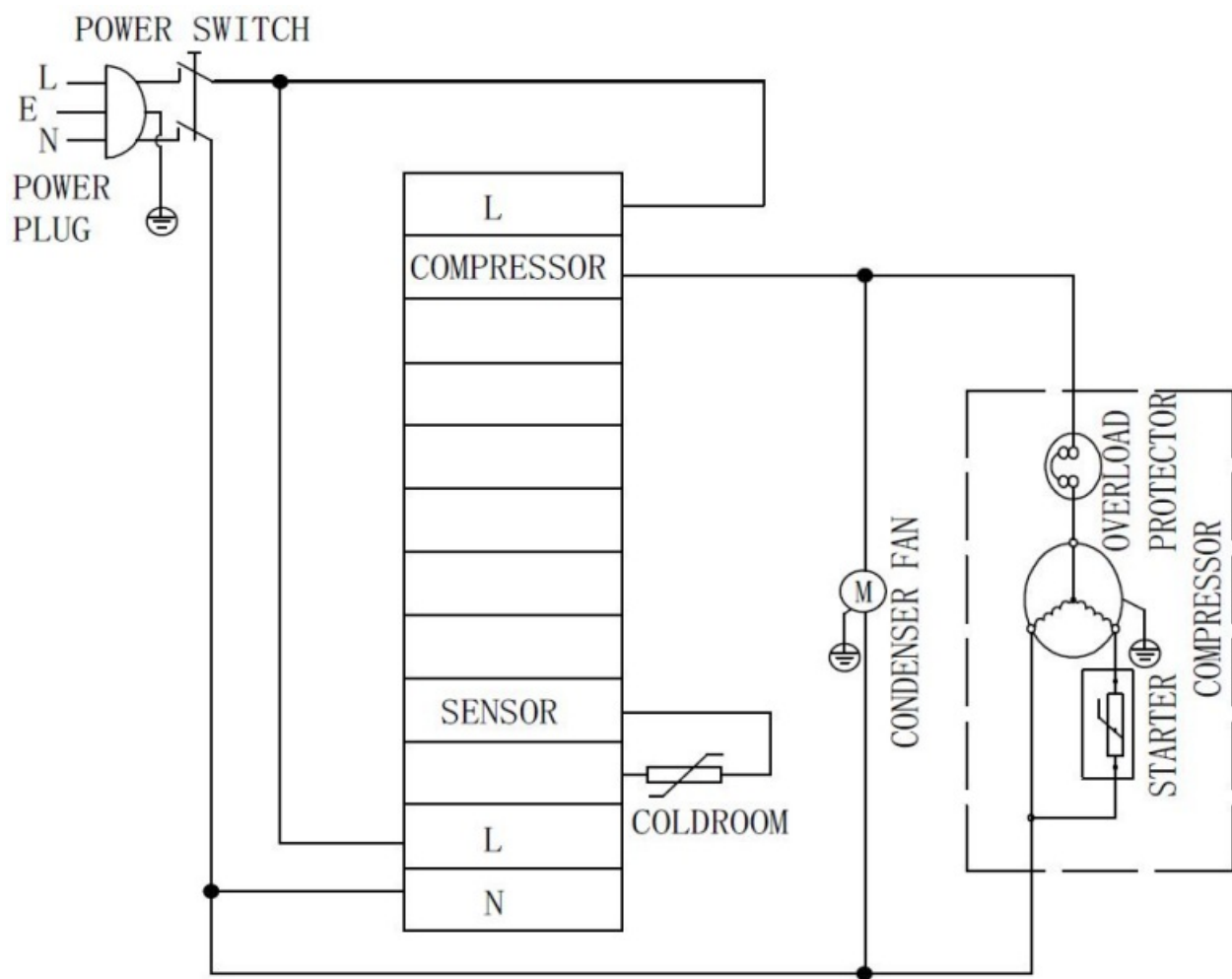
Check the following:

- Whether all screws and nuts are tight.
- Whether the device is well leveled.

If, despite all these checks, the unit continues to malfunction, contact your dealer. Prepare the following in advance:

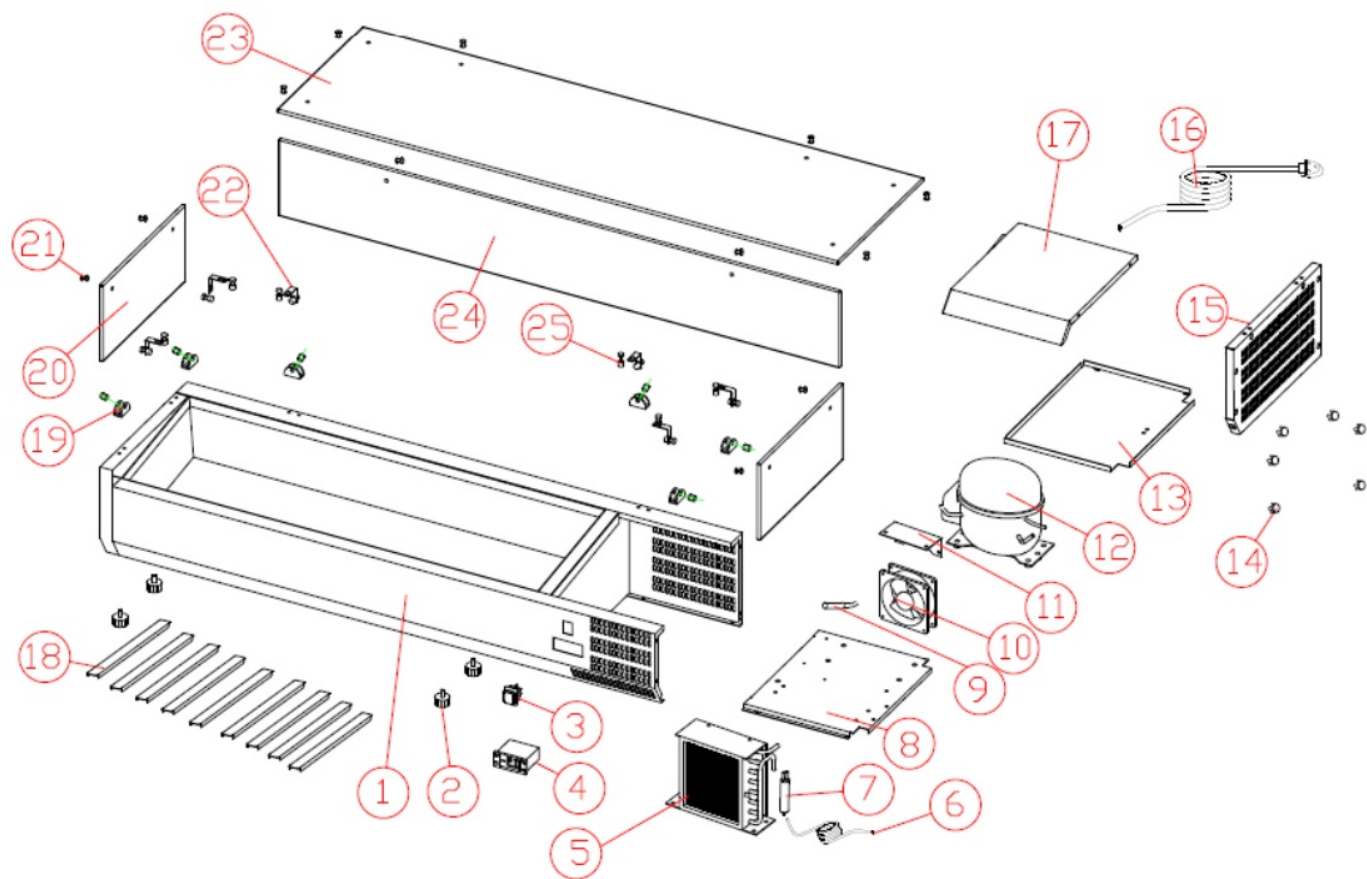
- Model description
- Serial number (see name plate)
- Alarm icons if they appear on the display.

## WIRING DIAGRAM



**EXPLODED VIEW**

## EXPLODED VIEW



## SPARE PARTS LISTW

Nº	Description	Q-ty
1	Cabinet	1
2	Feet	4
3	Power switch	1
4	Digital controller	1
5	Condenser	1
6	Capillary tube	1
7	Dryer filter	1
8	Bottom board	1
9	Probe	1
10	Condenser fan	1
11	Condenser fan connect metal sheet	1
12	Compressor	1
13	Support board for compressor unit	1
14	Screw cover	6
15	Right side cover	1
16	Power cord	1
17	Top cover	1
18	Intermediary rails	9
19	Glass fixed (with screw)	6
20	Side glass	2
21	Rubber sleeve	12
22	Glass connect	6
23	Top glass	1
24	Rear glass	1
25	Glass connect screw and nut	12


## DISPOSAL



Once the appliance has been used up, please dispose of it properly at a collection point for electrical appliances. Electrical appliances do not belong in household waste. Your responsible administration will inform you about the addresses and opening hours of collection points. This is the only way to ensure that old appliances are properly disposed of and recycled. Thank you very much!

Sandbahn 6, 46446 Emmerich am Rhein, Germany  
Tel. +49(0)2822 9258-0  
Fax +49(0)2822 18192  
E-Mail [info@saro.de](mailto:info@saro.de)  
Web: [www.saro.de](http://www.saro.de)

## Documents / Resources

 The image shows the Saro logo with the text 'Gastro-Products' and 'Betriebsanleitung für Aufwärmbehälter' (Operating instructions for warming containers). Below the logo is a photograph of the EVRX 2000 Refrigerated Table Top Display, a long, low, stainless steel unit with a glass front and multiple compartments.	<p><a href="#">saro EVRX 2000 Refrigerated Table Top Display</a> [pdf] Instruction Manual EVRX 2000 Refrigerated Table Top Display, EVRX 2000, Refrigerated Table Top Display, Table Top Display, Top Display, Display</p>
--	--

## References

- [Home | Saro](#)
- [Home | Saro](#)

Manuals+.