



[Home](#) » [Saramonic](#) » **Saramonic WiTalk9 System Full Duplex Wireless Intercom Headset System**

User Manual 

Saramonic®

Full-duplex Wireless Intercom Headset System

WiTalk9 System

User Manual



1F0300400577

Contents [[hide](#)]

- [1 WiTalk9 System Full Duplex Wireless Intercom Headset System](#)
- [2 General Introduction](#)
- [3 Features](#)
- [4 Available Packages](#)
- [5 Product Structure](#)
- [6 Panel on Master Headset](#)
- [7 Operation Guide](#)
- [8 Troubleshooting](#)
- [9 FAQ](#)
- [10 Specifications](#)
- [11 Documents / Resources](#)
 - [11.1 References](#)

WiTalk9 System Full Duplex Wireless Intercom Headset System

Statement

Please read this manual carefully before using the product and strictly operate & store it in accordance with the instructions. Please save the manual for your future reference. If you need further assistance than the user manual, please consult your retailer for help or email us: info@saramonic.com.

Cautions

1. Non-professionals are strictly prohibited from disassembling this unit on their own.
2. Please keep it away from heat sources such as radiators or spotlights.
3. Please clean the unit with only a soft, dry cloth.
4. When using and storing, please keep away from dust and moisture.
5. For the best pick-up pattern, do not hold your hand against the microphone capsule cover.

General Introduction

The WiTalk9 system, a full-duplex wireless intercom headset system, provides a reliable transmission range up to 500 m. With Saramonic app connection, in-app GPS tracking will automatically change the frequency to address the interference.

WiTalk9 adopts ClearTalk™, a three-microphone array noise cancellation algorithm with 360° coverage, features Light / Strong mode for clear crew communication. This system also comes with AGC algorithm and high volume for stable intercom in noisy environments with 130 dB SPL. The included aviation-grade condensation cushions reduce ambient noise further. The WiTalk9 system is ideal for medium-sized or major event scenes, such as media production teams, stage performances, recording entertainment programs, sports events, or fire drills.

Each headset comes with a rechargeable and replaceable battery. The runtime of the master headset is up to 10 hours. Each remote headset supports a 15-hour runtime.

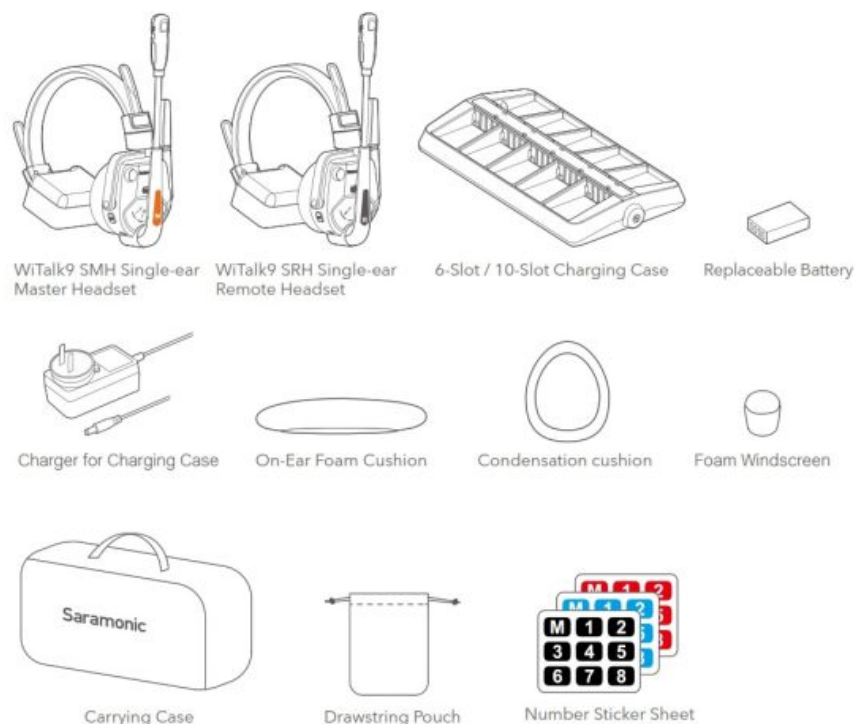
Features

- 9-person system, HUB-free, and ready to use. Scalable to 30 users via wired cascading.

- Cross-location communication via the LINK port to connect online meetings. Supports wireless connection to phones intercom under 4G / 5G roaming.
- Dual-antenna for up to 500 m intercom. Interference-free in areas with cluttered signals.
- ClearTalk™, a three-microphone array noise cancellation algorithm with 360° coverage, features Light / Strong mode for clear crew communication.
- AGC algorithm and high volume for stable intercom in noisy environments with 130 dB SPL.
- Saramonic App with essential functions in large icons for easy operation. AFH activation for seamless global use.
- Encryption for secure communication and preventing frequency interference.
- 10+ optional accessories with ear cushions, batteries, battery dock, etc.
- IPX5-rated for rainy weather performance. Wind-noise isolation algorithm and microphone foam cover for dual wind-noise isolation.
- Aviation-grade ear cushions with low-temperature condensing material for noise isolation, comfort, and sweat resistance.

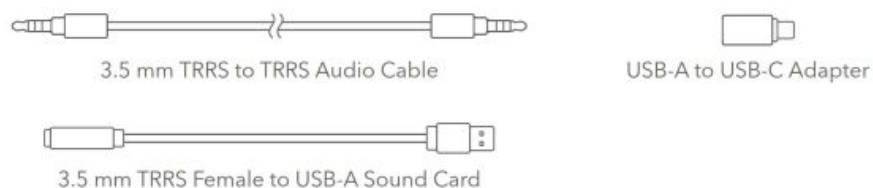
Available Packages

The WiTalk9 system comes with various configurations for you to choose depending on your team size. This manual is for all WiTalk9 packages. The contents of each package are described below.



Sold Separately

Link cable kit for cascade connection



WiTalk9 WT2S

WiTalk9 SMH Single-ear Master Headset (1)
 WiTalk9 SRH Single-ear Remote Headset (1)
 Replaceable Battery (4)
 6-Slot Charging Case (1)
 Charger for Charging Case (1)
 On-Ear Foam Cushion (2)
 Condensation Cushion (2)
 Headset Pad (2)
 Foam Windscreen for Microphone (2)
 Number Sticker Sheet for Headset (3)
 Drawstring Pouch for Headset (2)
 Carrying Case (1)

WiTalk9 WT6S

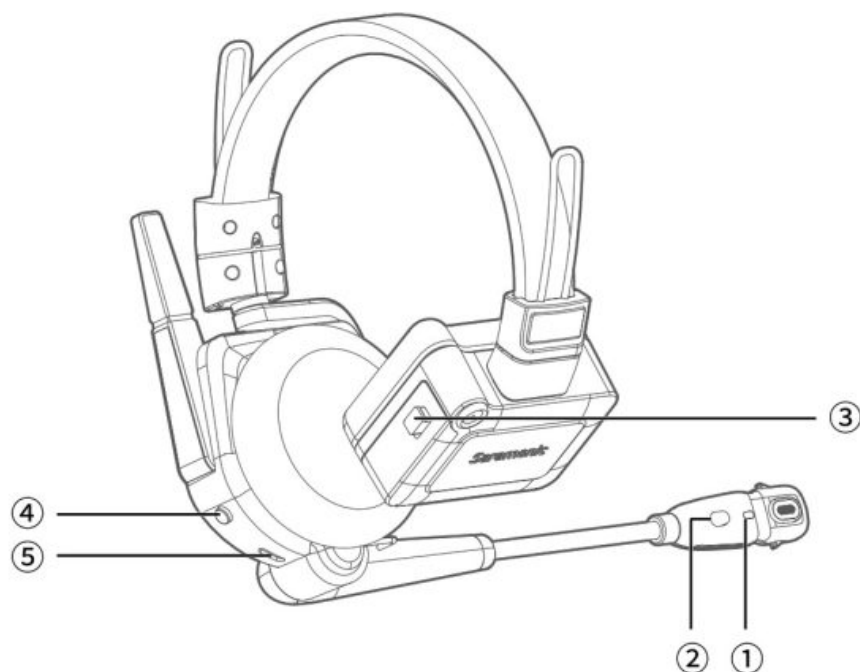
WiTalk9 SMH Single-ear Master Headset (6)
 WiTalk9 SRH Single-ear Remote Headset (6)
 Replaceable Battery (12)
 10-Slot Charging Case (1)
 Charger for Charging Case (1)
 On-Ear Foam Cushion (6)
 Condensation Cushion (6)
 Headset Pad (6)
 Foam Windscreen for Microphone (6)
 Number Sticker Sheet for Headset (3)
 Drawstring Pouch for Headset (6)
 Carrying Case (1)

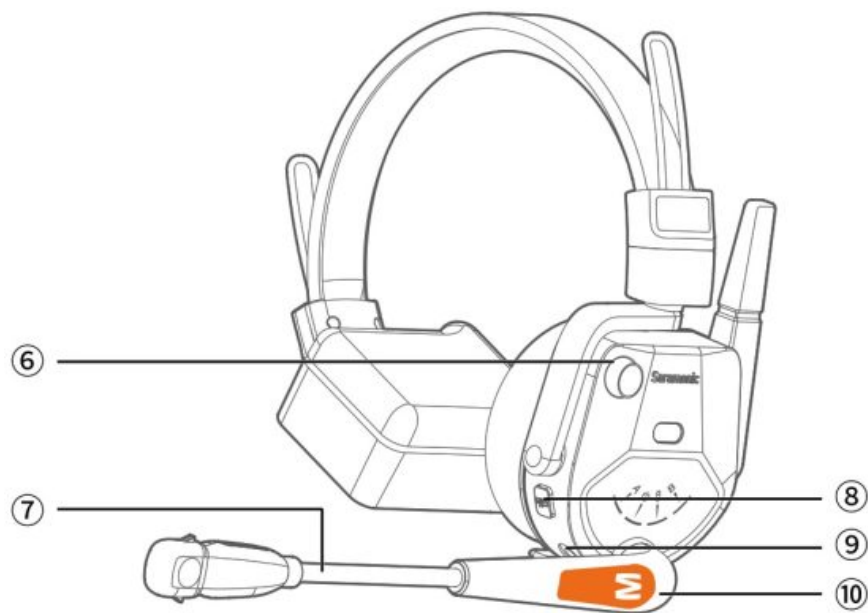
<p>WiTalk 9 WT3S</p> <p>WiTalk9 SMH Single-ear Master Headset (1)</p> <p>WiTalk9 SRH Single-ear Remote Headset (2)</p> <p>Replaceable Battery (6)</p> <p>6-Slot Charging Case (1)</p> <p>Charger for Charging Case (1)</p> <p>On-Ear Foam Cushion (3)</p> <p>Condensation Cushion (3)</p> <p>Headset Pad (3)</p> <p>Foam Windscreen for Microphone (3)</p> <p>Number Sticker Sheet for Headset (3)</p> <p>Drawstring Pouch for Headset (3)</p> <p>Carrying Case (1)</p>	<p>WiTalk9 WT7S</p> <p>WiTalk9 SMH Single-ear Master Headset (1)</p> <p>WiTalk9 SRH Single-ear Remote Headset (2)</p> <p>Replaceable Battery (14)</p> <p>10-Slot Charging Case (1)</p> <p>Charger for Charging Case (1)</p> <p>On-Ear Foam Cushion (7)</p> <p>Condensation Cushion (7)</p> <p>Headset Pad (7)</p> <p>Foam Windscreen for Microphone (7)</p> <p>Number Sticker Sheet for Headset (3)</p> <p>Drawstring Pouch for Headset (7)</p> <p>Carrying Case (1)</p>
<p>WiTalk9 WT4S</p> <p>WiTalk9 SMH Single-ear Master Headset (1)</p> <p>WiTalk9 SRH Single-ear Remote Headset (3)</p> <p>Replaceable Battery (8)</p> <p>10-Slot Charging Case (1)</p> <p>Charger for Charging Case (1)</p> <p>On-Ear Foam Cushion (4)</p> <p>Condensation Cushion (4)</p> <p>Headset Pad (4)</p> <p>Foam Windscreen for Microphone (4)</p> <p>Number Sticker Sheet for Headset (3)</p> <p>Drawstring Pouch for Headset (4)</p> <p>Carrying Case (1)</p>	<p>WiTalk9 WT8S</p> <p>WiTalk9 SMH Single-ear Master Headset (1)</p> <p>WiTalk9 SRH Single-ear Remote Headset (3)</p> <p>Replaceable Battery (16)</p> <p>10-Slot Charging Case (1)</p> <p>Charger for Charging Case (1)</p> <p>On-Ear Foam Cushion (8)</p> <p>Condensation Cushion (8)</p> <p>Headset Pad (8)</p> <p>Foam Windscreen for Microphone (8)</p> <p>Number Sticker Sheet for Headset (3)</p> <p>Drawstring Pouch for Headset (8)</p> <p>Carrying Case (1)</p>

WiTalk9 WT5S WiTalk9 SMH Single-ear Master Headset (1) WiTalk9 SRH Single-ear Remote Headset (4) Replaceable Battery (10) 10-Slot Charging Case (1) Charger for Charging Case (1) On-Ear Foam Cushion (5) Condensation Cushion (5) Headset Pad (5) Foam Windscreen for Microphone (5) Number Sticker Sheet for Headset (3) Drawstring Pouch for Headset (5) Carrying Case (1)	WiTalk9 WT9S WiTalk9 SMH Single-ear Master Headset (1) WiTalk9 SRH Single-ear Remote Headset (4) Replaceable Battery (18) 10-Slot Charging Case (1) Charger for Charging Case (1) On-Ear Foam Cushion (9) Condensation Cushion (9) Headset Pad (9) Foam Windscreen for Microphone (9) Number Sticker Sheet for Headset (3) Drawstring Pouch for Headset (9) Carrying Case (1)
--	--

Product Structure

WiTalk9 SMH Single-ear Master Headset





① Mic Indicator

② Environmental Noise Cancellation (ENC) Button

Operation	Status	Mic Indicator	Voice Prompt
Press once	Strong ENC	Static green	Strong
	Weak ENC	Static blue	Weak
Press and hold for 3 seconds	Cascade connection enabled	Static purple	No
	Cascade connection disabled	Back to previous status	No

- The headset defaults to weak noise cancellation mode.
- The cascade connection feature is turned off by default.

For more details, please refer to "⑨ TRRS Jack for Wired Link".

③ Battery Compartment Switch

Slide down the battery compartment switch to open its cover, then remove the battery for charging or insert the battery for use.

④ Power Button

Press and hold for 2 seconds to power on or off. There is a voice prompt of "Power on"

from the master headset if turned on, or a voice prompt of “Power off” if turned off.

⑤ USB-C Charging Port (5 V / 1 A)

For charging the headset.

⑥ Volume Control / Announce Button

Operation	Function	Voice prompt
Rotate clockwise	Increase volume	No
Rotate counter clockwise	Decrease volume	No
Press and hold	Enable Announce	Du

- By activating the Announce feature (the master headset only), the system will mute all paired remote headsets and their mic indicators will blink red slowly, allowing the whole team to hear the direct instructions or commands from the master headset.
- To use the Announce function, press and hold the Announce button to talk and then release the button to mute yourself. You can unmute yourself via the mute button or boom.

⑦ Boom

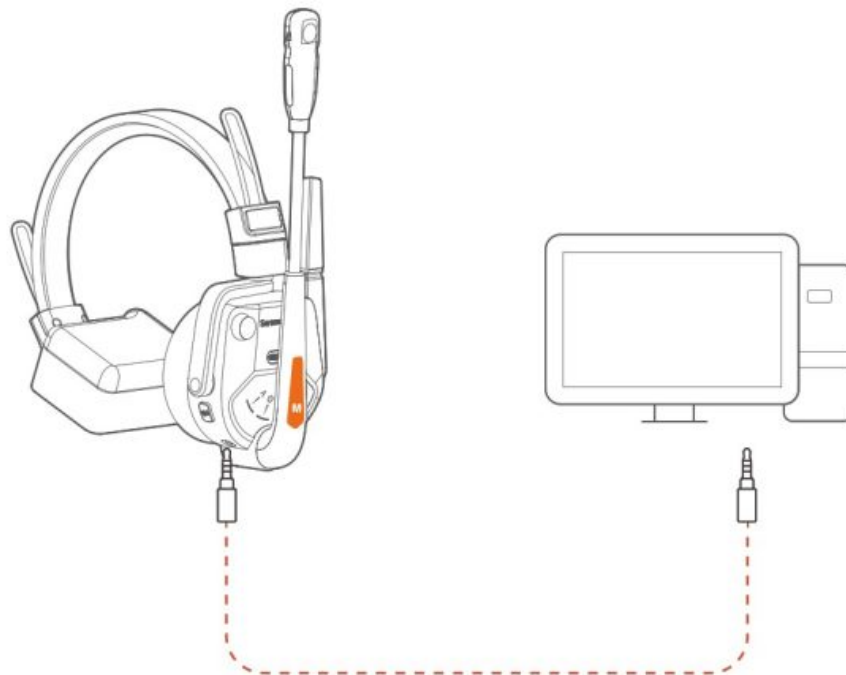
Operation	Function	Mic Indicator	Voice Prompt
Flip up	Mute on	Static red	Du
Fold down	Mute off	Static blue / green	Du

⑧ Mute Button

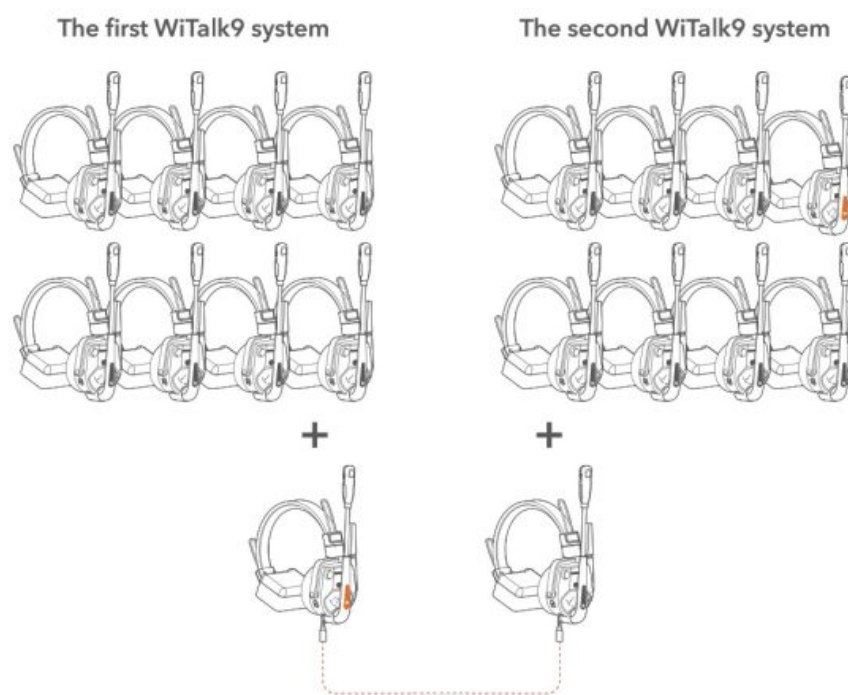
Operation	Function	Mic Indicator	Voice Prompt
Press once	Mute on	Static red	Du
	Mute off	Static blue / green	Du

⑨ TRRS Jack for Wired Link

- Plug in the link cable kit for cascade connection (sold separately) to connect the headset to a device with a TRRS jack, achieving audio monitoring at site.



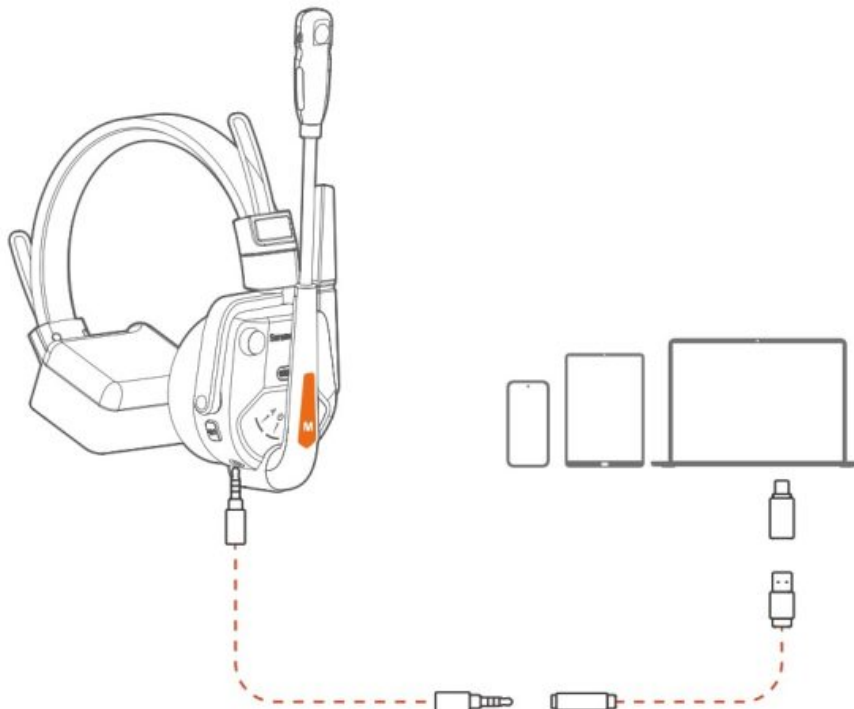
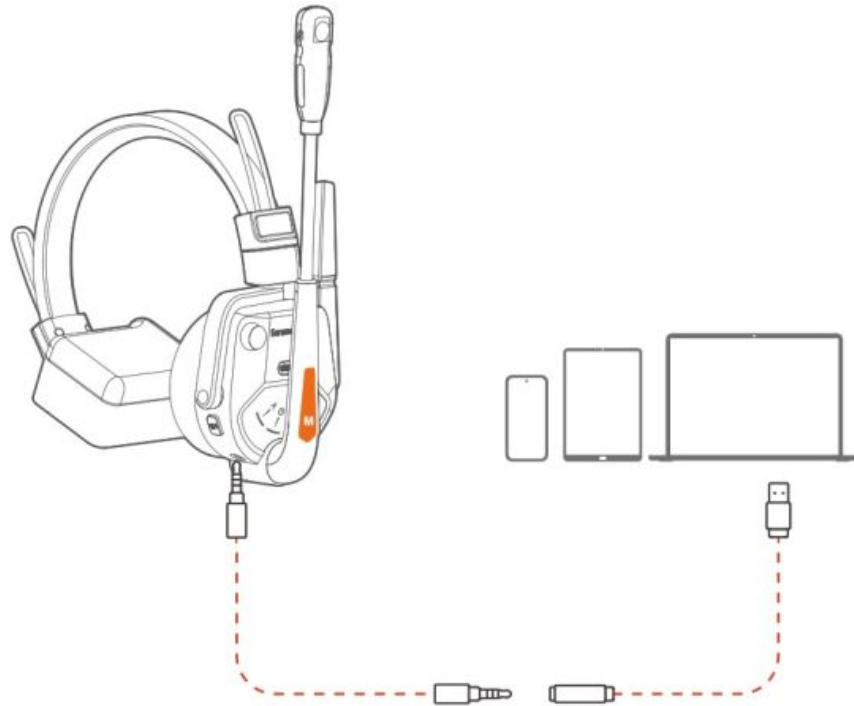
- Plug in the link cable kit to connect the master headset of the first WiTalk9 system to the remote headset of the second WiTalk9 system, accommodating expanded communication needs. It can be cascaded with up to 4 systems.



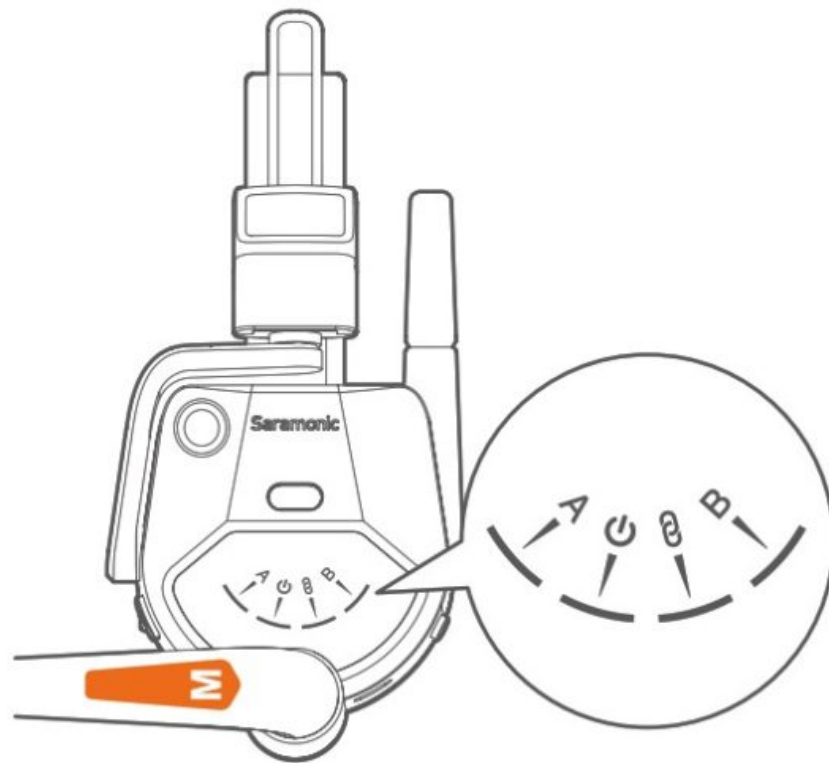
- Plug in the link cable kit to connect your phone or computer. With your phone or computer connected, the headset can attend any cloud conference anytime running on

ZOOM, Tencent Meeting or other meeting applications on your phone or computer, bringing your remote and in-person teams together.

Note: You need to press and hold the ENC button for 3 seconds to turn the cascade connection on, allowing these two teams to communicate with each other. In view of the compatibility of different smart phones, Saramonic suggests to use the USB-C adapter of the link cable kit with your smart phone.



Panel on Master Headset



A Group A Indicator

Note: You need to purchase an HUB to activate it.

Power Indicator

Status	Power Indicator	Voice Prompt
Unpaired or not reconnected	Blinking blue slowly	No
Disconnected (beyond operating range)	Blinking blue slowly	No
Successfully paired or reconnected	Static blue	No
Charging via USB-C charging port	Static red	No
Fully charged	Static blue	No
Low battery (10%)	Blinking red rapidly	Battery level low (per 10 minutes)

- Remote headsets can NOT communicate with each other if the master headset is powered off.
- The master headset will automatically power off if unpaired for 30 minutes.
- With the master headset on, you can purchase a USB cable for charging while using.

Wireless Link Indicator

Only the master headset has the wireless link feature, and the remote headset does not have this feature.

Press and hold the mute button on the master headset for 3 seconds to turn on its wireless link. Then you need to activate Bluetooth on your phone or computer, and search for WT9-M Audio to pair up. The master headset can be connected for listening to music, calls and cloud meetings from your phone or computer.

Status	Wireless Link Indicator	Voice Prompt
Wireless link on	Blinking blue rapidly	Pairing
Wireless link off	previous Back to p status	No
Unpaired	Blinking blue slowly	No
Successfully paired	Static blue	Pairing success
Disconnected (beyond operating range)	Blinking blue rapidly	Disconnected
Unpaired or disconnected for 5 minutes	Off	No

Note: The link history will be cleared after the master headset is restarted.

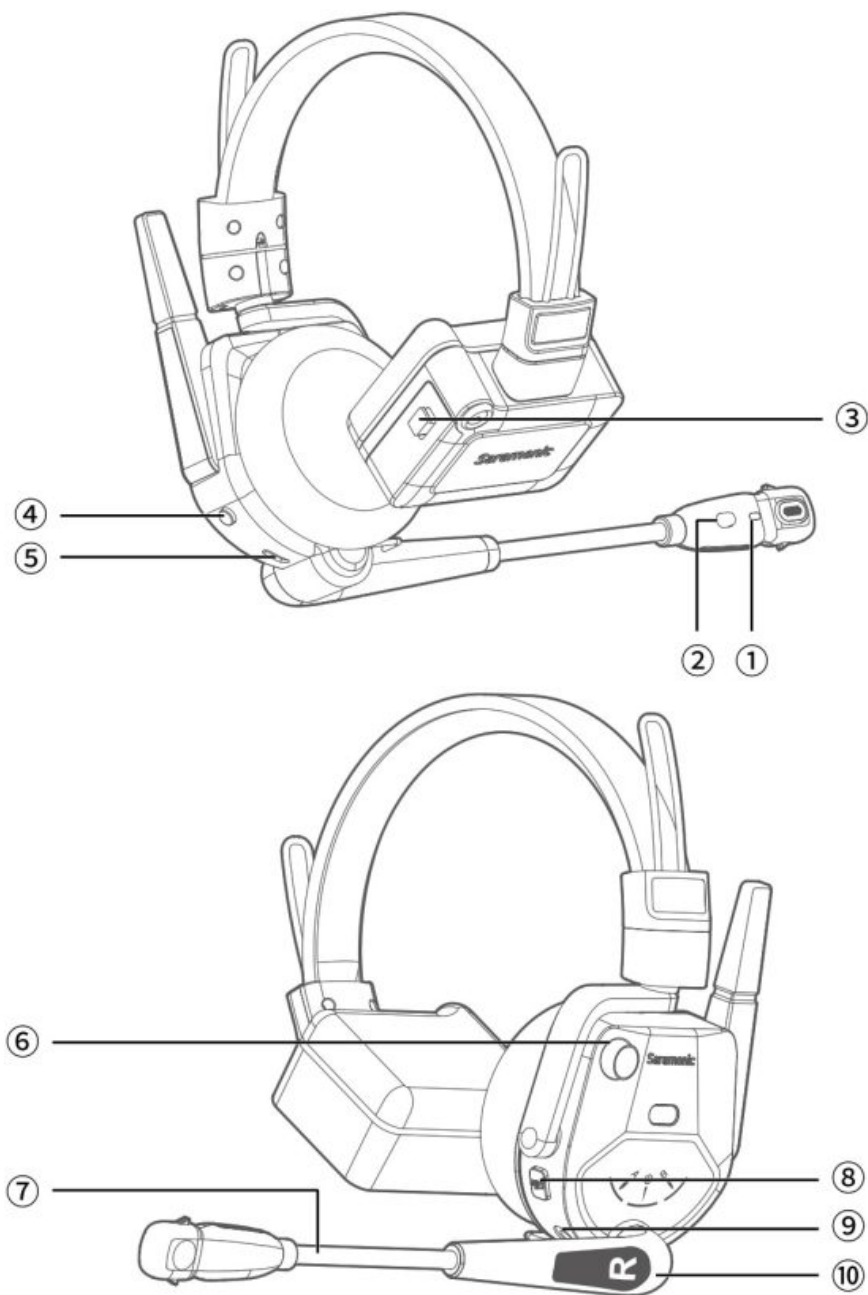
The wireless link and wired link features can not be used simultaneously. If the wired link feature is activated and connected, its wireless link feature will be automatically

disconnected.

B Group B Indicator

Note: You need to purchase an HUB to activate it.

WiTalk9 SRH Single-ear Remote Headset



① Mic Indicator

② Environmental Noise Cancellation (ENC) Button

Operation	Status	Mic Indicator	Voice Pr ompt
-----------	--------	---------------	------------------

Press once	Strong ENC	Static green	Strong
	Weak ENC	Static blue	Weak
Press and hold for 3 seconds	Cascade connection enabled	Static purple	No
	Cascade connection disabled	Back to previous status	No

- The headset defaults to weak noise cancellation mode.
- The cascade connection feature is turned off by default. For more details, please refer to "⑨ TRRS Jack for Wired Link" of the master headset.

③ Battery Compartment Switch

Slide down the battery compartment switch to open its cover, then remove the battery for charging or insert the battery for use.

④ Power Button

Press and hold for 2 seconds to power on or off. There is a voice prompt of "Power on" or "Power off" from the remote headset.

⑤ USB-C Charging Port (5 V/1 A)

For charging the headset.

⑥ Volume Control / PTT Button

Operation	Function	Voice prompt
Rotate clockwise	Increase volume	No
Rotate counter clockwise	Decrease volume	No
Press and hold	Enable PTT	Du

If you are using the remote headset, and you do not want all your voice to be captured

by the microphone when you have less frequent contact with your team, it is recommended to enable the PTT function. Once activated, press the volume control to talk, and then release to mute. You can unmute yourself by pressing the mute button once or folding down the boom.

⑦ Boom

Operation	Function	Mic Indicator	Voice Prompt
Flip up	Mute on	Static red	Du
Fold down	Mute off	Static blue / green	Du

⑧ Mute Button

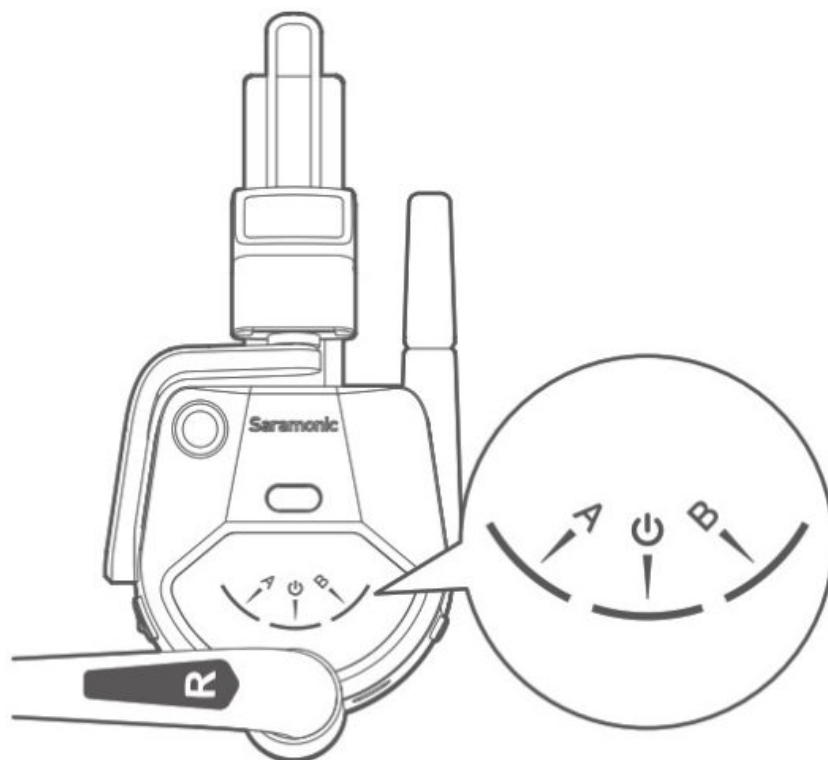
Operation	Function	Mic Indicator	Voice Prompt
Press once	Mute on	Static red	Du
	Mute off	Static blue / green	Du

⑨ TRRS Jack for Wired Link

Its function is consistent with the TRRS jack for wired link of the master headset. For details, please refer to ” ⑨ TRRS Jack for Wired Link” of the master headset.

⑩ Nameplate for Remote Headset (R)

Panel on Remote Headset



Group A Indicator

Note: You need to purchase an HUB to activate it.

Power Indicator

Status	Power Indicator	Voice Prompt
Unpaired or not reconnected	Blinking blue slowly	No
Disconnected (beyond operating range)	Blinking blue slowly	Disconnected
Successfully paired or reconnected	Static blue	Connected
Charging via USB-C charging port	Static red	No
Fully charged	Static blue	No

Low battery (.1 0%)	Blinking red rapidly	Battery level low (per 10 minutes)
----------------------	----------------------	------------------------------------

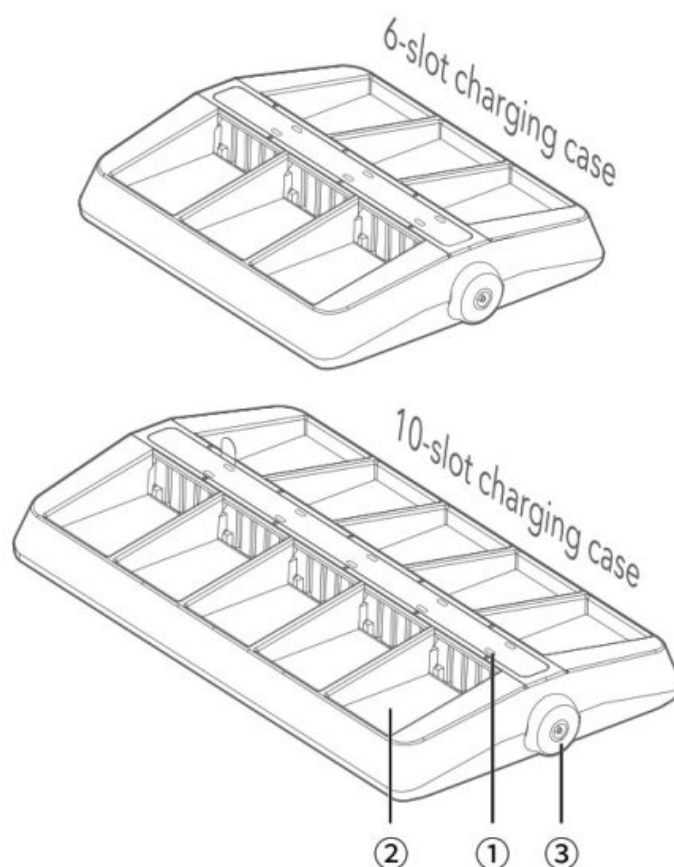
- Remote headsets can NOT communicate with each other if the master headset is powered off.
- The remote headset will automatically power off if unpaired for 10 minutes.
- With the remote headset on, you can purchase a USB cable for charging while using.

B Group B Indicator

Note: You need to purchase an HUB to activate it.

Charging Case

When the charging case is connected to power, put batteries into it for charging.



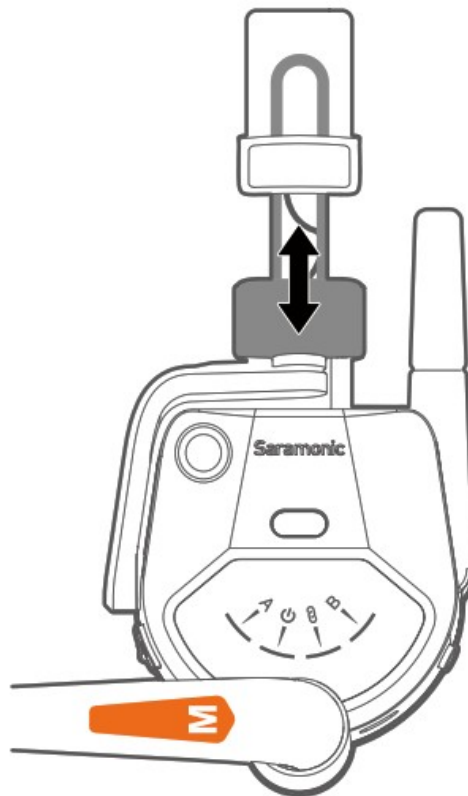
① Charging Indicator ■ Charging ■ Fully charged

② Slot for Battery

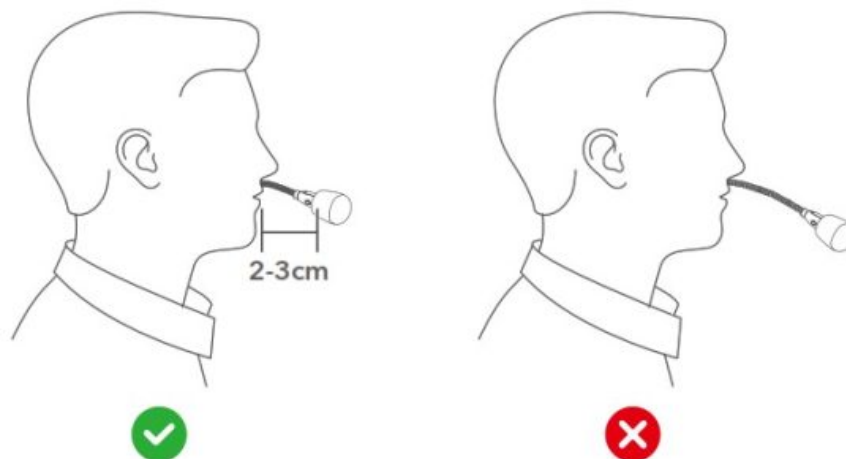
③ DC Jack with A Screw Nut

Operation Guide

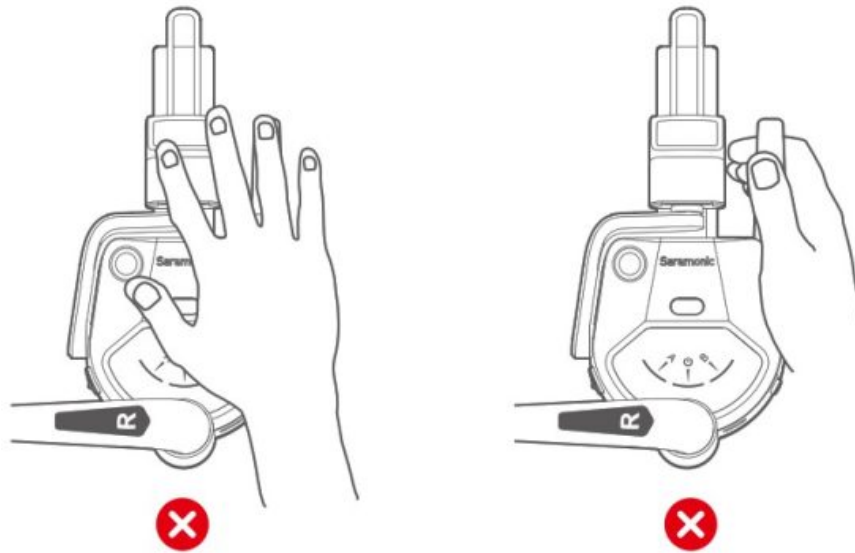
How to Wear



1. Adjust the headband for a comfortable fit according to your head size.
2. Flexible boom with 270-degree pivot range for left- or right-side wear.



3. Position the microphone approximately 2 ~ 3 cm away from the edge of your mouth to avoid “popping” or other breath noise and do not place directly in front of your mouth.



4. While using, please do not cover the antenna area shown in the figure above to avoid signal interference, and do not handle the antenna to avoid damage.

How to Use

The WiTalk9 system automatically pairs up right out of the box. Press and hold the power button for two seconds to turn on each headset to get used.

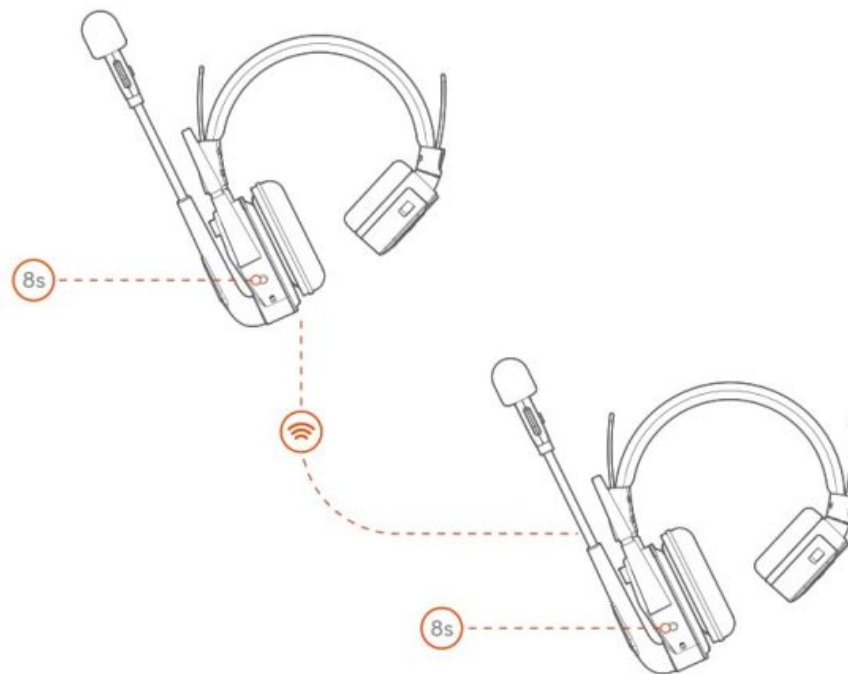
How to pair

The WiTalk9 system automatically pairs up right out of the box. If disconnection occurs, please follow the below steps:

Note: To ensure successful pairing, it is recommended to operate the master headset to forget paired headsets before manual pairing. For more details, please refer to "How to forget paired headsets" below.

(1) With the master headset off, press and hold its power button for 8 seconds until its power indicator blinks blue rapidly and music plays. Then the master headset will enter pairing mode.

(2) With the remote headset (1#) off, press and hold its power button for 8 seconds until its power indicator blinks blue rapidly and music plays. Then the remote headset (1#) will enter pairing mode. Follow this step to operate all remote headsets (2/3/4/5/6/7/8#) to enter pairing mode. (3) If you hear a voice prompt of "Connected" from the remote headset (1#), the connection between this remote headset (1#) and the master headset is established. All remote headsets (2/3/4/5/6/7/8#) will pair with the master headset in sequence.



How to exit pairing

You will be ready to communicate with your team after the master headset exits pairing status. Its power indicator will glow static blue if the master headset exits pairing mode. Choose one of the following ways to exit pairing: (1) The master headset will automatically exit pairing if it is fully paired (with 8 remote headsets). (2) If the master headset is not fully paired, press its power button once to exit the pairing status.

How to forget paired headsets

With the master headset off, simultaneously press and hold its power button and mute button for 3 seconds until its power indicator blinks blue and red alternately, then it will forget all paired remote headsets. The master headset will automatically shut down after successful forgetting.

Note: If the master headset forgets paired headsets, all paired remote headsets will be forgotten and you do not need to operate remote headsets to forget the paired master headset.

Other Functions

Sidetone

Simultaneously press the volume control and mute button once to enable or disable the sidetone function, and a voice prompt of “du” will appear.

- Once this function is activated, you can hear yourself when you are speaking. There

will be a hearing delay, which is normal.

- Make sure the headset is worn on your head once you activate this function, otherwise howling noise will appear.
- It is recommended that you do not enable the sidetone feature when the cascade connection is activated and connected. Otherwise, current sound will generate and bring you a bad audio experience.
- This function can NOT be enabled when the headset is muted.

Reset

With the master headset or remote headset off, press and hold the power button and volume control at the same time for 8 seconds to reset the headset. All its indicators will glow static blue while resetting. The

master headset or remote headset will shut down and all its indicators will turn off after successful resetting.

App Control

Supports real-time monitoring of the current battery level of the device, connection status, and their names; Supports manually muting the remote headset, a separate 1 v 1 communication, and the Announce

feature, the master headset pairing, the master headset forgetting paired headsets; Supports customized names, firmware updates for the device.

Wireless connection to Saramonic app:

Step1: Download Saramonic app on your phone or computer and launch it.

Step2: Enter the home page, click “Add Device” on the top left and search for Bluetooth, then click “WiTalk9” in the Bluetooth list to connect them.

Step3: Click “View Device” on the current page to enter the WiTalk9 device management page; Or return to the home page and click “Device Management” to enter the device management page.

Note: You need to open the Saramonic app, then search for and connect WiTalk9 in the Bluetooth list in the Saramonic app. If you directly search for and connect WiTalk9 in the Bluetooth list of your phone system, app control is not available. You need to disconnect them or forget this device, then follow the above steps to achieve app control.

Troubleshooting

If you encounter any problems while using the unit, please refer to the following first. If the problem still persists, please contact the dealer's after-sales service department.

- Failed to power on

Make sure the battery level of the headset is not low.

- The charging status does not be displayed when plugged into the charging cable If the current battery level is full, try using the battery for a period of time.
- No music from the master headset in pairing mode Make sure the master headset does not automatically reconnect with the last paired device (mobile phone / computer). You may press and hold its mute button for 3 seconds when the master headset is turned on, then you will hear the music when its wireless link indicator flashes blue and enters pairing mode.
- The master or remote headset automatically shuts down when the pairing is not completed When not paired, the master headset will automatically shut down after 30 minutes and the remote headset will automatically shut down after 10 minutes. Therefore, turn it on and get started.
- The remote headset fails to reconnect with the master headset The master headset may have forgotten paired headsets, and all paired headsets are forgotten. Therefore, you may pair them manually.
- No sound from the headset
 - (1) Make sure the master headset and the remote headset are paired up successfully.
 - (2) Make sure your headset is not muted. Its mic indicator glows red when muted. You can unmute it via pressing the mute button or folding down the boom.
 - (3) Make sure the headset is not muted by Saramonic app. If it is muted by this app, you need to unmute it by this app.
- The master and remote headsets have been paired but speaking voice cannot be heard Make sure the master headset exits pairing mode.

FAQ

- Will the master and remote headset need to be paired again after resetting?

Yes. Resetting is to restore the current headset to default parameters, which will forget the paired headsets.

- Will link channels be muted when the master or remote headset are muted?

No. The mute function does not mute link channels.

- Will the voice prompt be heard by other headsets?

No. The voice prompt can only be heard in the current headset, and will not be transmitted to other headsets, or link channels.

- Will the remote headset need to re-establish the connection with the master headset if they are disconnected due to exceeding the operating range?

No. They will automatically reconnect within the operating range.

- Will the customized name of the remote headset that is renamed by Saramonic app be retained the next time when it reconnects with the master headset?

Yes.

- Can the Announce function be activated when the master headset is muted?

Yes, this function can be activated regardless of whether it is in mute mode or not.

- Can the PTT function be activated when the remote headset is muted?

Yes, this function can be activated regardless of whether it is in mute mode or not.

Specifications

WiTalk9 SMH Single-ear Master Headset / SRH Single-ear Remote Headset

"height: 691px" width="739">

Transmission Range	≥ 500 m
Modulation Mode	GFSK
Sampling Rate	16 kHz / 16-bit (with 8 remote headsets connection)
Voice Delay	≤ 83 ms (with 8 remote headsets connection)
Receiving Sensitivity	< -93 dB
Noise Cancellation Depth	50 dB
Frequency Response	150 Hz – 8 kHz
Signal-to-Noise Ratio	> 65 dB
Distortion	< 1%@94 dB SPL, 1 kHz
Microphone Type	Electret
Input SPL	> 100 dB SPL
Output SPL	128 dB
Replaceable Battery Capacity	1450 mAh
Power Requirements	Powered by a replaceable battery / USB-C charging port
Runtime	Master headset: ≥ 10 h (with 4 remote headsets connection); ≥ 9 h (with 8 remote headsets connection)
	Remote headset: ≥ 15 h

Charging Time	≤ 3.5 h (charging via USB-C port in shutdown mode)
Weight	231.5 g (battery and condensation cushion included)
Working Temperature	-10 °C ~ 50°C
Storage Temperature	-20 °C ~ 55°C

6-Slot Charging Case

Port	DC jack
Dimensions	153×127×31 mm
Weight	192.5 g
Charging Power	< 20 W
Power Supply Range	12 V±10%
Current	< 1.6 A
Charging Time	≤ 3.5 h
Working Temperature	0°C ~ 50 °C
Storage Temperature	-10 °C ~ 60 °C

10-Slot Charging Case

Interface	DC jack
Dimensions	231×127×31 mm
Weight	298 g

Charging Power	< 34 W
Power Supply Range	12 V±10%
Current	< 2.8 A
Charging Time	≤ 3.5 h
Working Temperature	0 °C ~ 50 °C
Storage Temperature	-10 °C ~ 60°C

NOTE: This equipment has been tested and found to comply with the limits for a Class B digital device, pursuant to part 15 of the FCC Rules. These limits are designed to provide reasonable protection against harmful interference in a residential installation. This equipment generates, uses and can radiate radio frequency energy and, if not installed and used in accordance with the instructions, may cause harmful interference to radio communications. However, there is no guarantee that interference will not occur in a particular installation. If this equipment does cause harmful interference to radio or television reception, which can be determined by turning the equipment off and on, the user is encouraged to try to correct the interference by one or more of the following measures:

xt-align: justify">

- Reorient or relocate the receiving antenna.
- Increase the separation between the equipment and receiver.
- Connect the equipment into an outlet on a circuit different from that to which the receiver is connected.
- Consult t

he dealer or an experienced radio/TV technician for help

Changes or modifications not expressly approved by the party responsible for compliance could void the user's authority to operate the equipment.

This device complies with Part 15 of the FCC Rules. Operation is subject to the following two conditions:

(1) this device may not cause harmful interference, and (2) this device must accept any

interference received, including interference that may cause undesired operation.

FCC RF Exposure requirements: This equipment has been tested for SAR compliance. This equipment should be installed and operated with minimum distance 0 mm between the radiator and your head. This transmitter must not be collocated or operating in conjunction with any other antenna or transmitter.




t-align: center"><https://app.release.jiayz.com/appdata/toDownloadSA>

For better recording experience, the application Saramonic is recommended.

	
http://xhslink.com/BtnDZL	http://weixin.qq.com/r/ikk1LQXEelgFrUFO9xyY

Shenzhen Jiayz Photo Industrial., Ltd

A16 Building, Intelligent Terminal Industrial Park of Silicon Valley
Power, Guanlan, Longhua District, Shenzhen, China

t-align: center"> 400-613-1096  www.saramonic.com

 info@saramonic.com

Documents / Resources



Saramonic WiTalk9 System Full Duplex Wireless Intercom Headset System [pdf] User Manual

040711B, 040711A, 040711b, 040711a, WiTalk9 System Full Duplex Wireless Intercom Headset System, WiTalk9 System, Full Duplex Wireless Intercom Headset System, Wireless Intercom Headset System, Intercom Headset System, Headset System

References

- [User Manual](#)

■ Saramonic 040711A, 040711B, Full Duplex Wireless Intercom Headset System, Headset System, Intercom Headset System, Saramonic, Wireless Intercom Headset System, WiTalk9 System, WiTalk9 System Full Duplex Wireless Intercom Headset System

—Previous Post

[Saramonic 2ARN3-41701TX 2.4 GHz Dual Channel Wireless Microphone User Manual](#)

Next Post—

[Saramonic TC-NEO Wireless Timecode Generator User Manual](#)

Leave a comment

Your email address will not be published. Required fields are marked *

Comment *

Name

Email

Website

☐ Save my name, email, and website in this browser for the next time I comment.

Post Comment

Search:

e.g. whirlpool wrf535swhz

Search

[Manuals+](#) | [Upload](#) | [Deep Search](#) | [Privacy Policy](#) | [@manuals.plus](#) | [YouTube](#)

This website is an independent publication and is neither affiliated with nor endorsed by any of the trademark owners. The "Bluetooth®" word mark and logos are registered trademarks owned by Bluetooth SIG, Inc. The "Wi-Fi®" word mark and logos are registered trademarks owned by the Wi-Fi Alliance. Any use of these marks on this website does not imply any affiliation with or endorsement.