



# Saramonic WiTalk9 SE Full Duplex Wireless Intercom Headset System User Manual

[Home](#) » [Saramonic](#) » Saramonic WiTalk9 SE Full Duplex Wireless Intercom Headset System User Manual 

## Contents

- 1 Saramonic WiTalk9 SE Full Duplex Wireless Intercom Headset System User Manual
- 2 Statement
- 3 Safety Guidelines
- 4 General Introduction
- 5 Features
- 6 Available Packages
- 7 WiTalk9 SE-2S
- 8 WiTalk9 SE-3S
- 9 WiTalk9 SE-4S
- 10 WiTalk9 SE-5S
- 11 Product Structure
- 12 WiTalk9 SE SMH Single-ear Master Headset / SRH Single-ear Remote Headset
- 13 Mic Indicator
  - 13.1 Environmental Noise Cancellation (ENC) Button
  - 13.2 Battery Compartment Switch
  - 13.3 Power Button
  - 13.4 USB-C Charging Port (5 V/1 A)
  - 13.5 Volume Control / Announce Button (master headset)
  - 13.6 Mute Button
- 14 Panel on Master / Remote Headset
- 15 Power Indicator:
  - 15.1 Note:
  - 15.2 Charging Case for Battery
  - 15.3 Charging Indicator
- 16 Operation Guide
- 17 How to Wear
- 18 How to Use
  - 18.1 How to pair
  - 18.2 How to exit pairing mode
  - 18.3 How to forget paired headsets
- 19 Other Functions
- 20 Sidetone
- 21 Reset
- 22 App Control
- 23 Troubleshooting
  - 23.1 If you encounter any problems while using the unit, please refer to the following first. If the problem still persists, please contact the dealer's after-sales services department.
- 24 The pairing between the master headset and remote headset is unsuccessful
- 25 No sound from the headset
- 26 Failed to power on
- 27 Voice change or noise issues
  - 27.1 • Failed to charge the battery when placed into the charging case
  - 27.2 • The headset automatically shuts down
- 28 Specifications
- 29 WiTalk9 SE SMH Single-ear Master Headset / SRH Single-ear Remote Headset
- 30 Read More About This Manual & Download PDF
- 31 Documents / Resources
  - 31.1 References

# Saramonic WiTalk9 SE Full Duplex Wireless Intercom Headset System User Manual



## Statement

Please read this manual carefully before using the product and strictly operate & store it in accordance with the instructions. Please save the manual for your future reference. If you need further assistance than the user manual, please consult your retailer for help or email us: [info@saramonic.com](mailto:info@saramonic.com).

## Safety Guidelines

Please read thoroughly and obey the safety guidelines and the user manual before using this product, and then operate correctly. This product is not suitable for children to use. By using this product, you hereby signify that you have read and accepted all the terms and conditions associated with the product. You agree to be responsible for the potential consequences of using the product. Saramonic will assume no liability for any damage, injury or any legal responsibility incurred from improper operations by the user. Please abide by the following safety practices:

- Do not monitor at excessive volumes as it can cause permanent hearing damage.
- Do not store for an extended period when the battery has been completely discharged, which may cause irreparable
- Do not dismantle or pierce the battery in any way, otherwise a leak of electrolytes, or even a fire or explosion may occur.
- Do not strike, crush or drop the Do not place heavy objects on the product.
- Do not use near stoves and heaters, or store in your car in hot weather.
- If the product is on fire, please immediately put out it by water, water mist, sand, a fire blanket, a dry powder or a carbon dioxide fire extinguisher.

## General Introduction

The WiTalk9 SE system, a full-duplex wireless intercom headset system, operates in the 2.4 GHz band and provides a reliable transmission range up to 350 m.

This system delivers a better hands-free coordinating experience, maximizing your team productivity and fostering team interaction. It builds a 5-person intercom system (1 master headset with 4 remote headset connection), ideal for small and medium-sized event scenes, such as wedding ceremonies, shooting short films, advertisements, interviews or conferences.

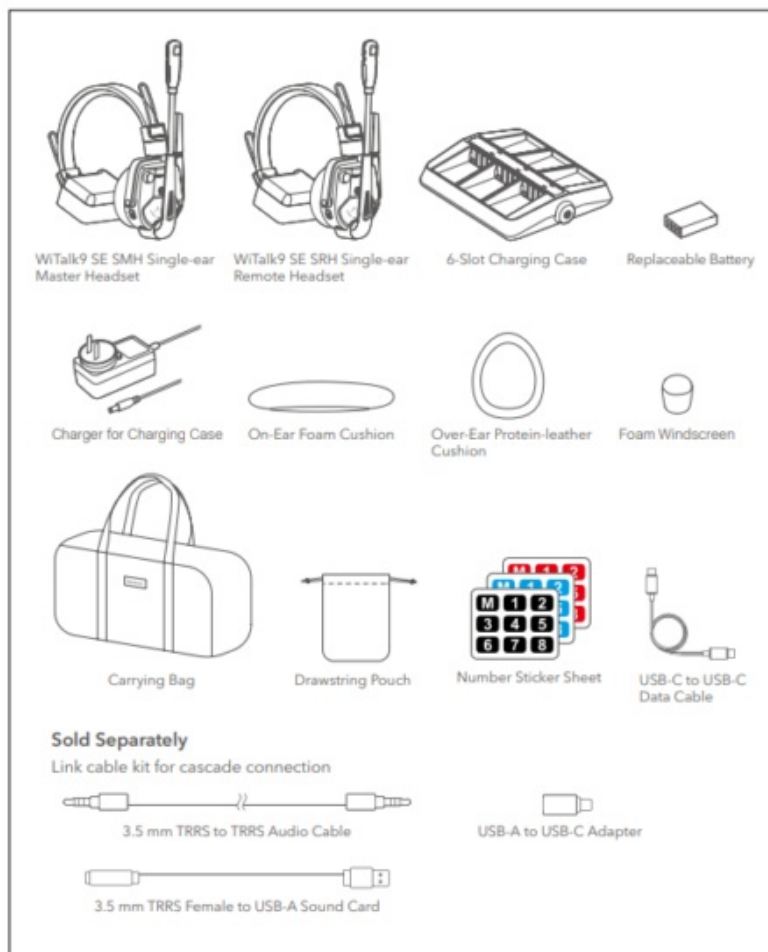
Each headset is powered by a rechargeable and replaceable battery that can be placed into the charging case for charging. When the master headset is connected to 4 remote headsets, each headset supports a 24-hour runtime on a single charge. Additionally, each headset boasts a USB-C port for charging. If the headset is charged via its USB-C port in shutdown mode, a full charge takes about 3.5 hours.

## Features

- 5-person full-duplex system. No HUB design. Ready to use. Scalable to 9 users with 2 sets connected via wired
- Cross-location Communication: Any headset can access online meetings via a wired
- Decentralized for More Flexibility: Every headset can be a Master. A malfunctioning, broken, or lost Master will not affect the overall use.
- Dual-Antenna Design: Automatic Frequency Hopping (AFH) for team talks to remain consistent within 350m.
- ClearTalk™: The original three-microphone array noise cancellation algorithm with 360° coverage, optional with Light / Strong mode for clear team talks.
- AGC Algorithm and High Volume: Keep calls clear even if the SPL is 120 dB in the Coupled with the protein leather cushion, the noise isolation is only elevated.
- Saramonic App, Master Control: Essential functions in large icons for intuitive AFH activation for seamless global use.
- 10+ Optional Accessories: Ear cushions, batteries, charging dock,

## Available Packages

The WiTalk9 SE system comes with various configurations for you to choose from depending on your team size. This manual is for all WiTalk9 SE packages. The contents of each package are described below.



## WiTalk9 SE-2S

WiTalk9 SE SMH Single-ear Master Headset (1) WiTalk9 SE SRH Single-ear Remote Headset (1) Replaceable Battery (2)  
6-Slot Charging Case (1) Charger for Charging Case (1) USB-C to USB-C Data Cable (1) On-Ear Foam Cushion (2)  
Over-Ear Protein-leather Cushion (2) Velcro Headset Pad (2)  
Foam Windscreen for Microphone (2) Number Sticker Sheet for Headset (3) Drawstring Pouch for Headset (2) Carrying Bag (1)

### **WiTalk9 SE-3S**

WiTalk9 SE SMH Single-ear Master Headset (1) WiTalk9 SE SRH Single-ear Remote Headset (2) Replaceable Battery (3)  
6-Slot Charging Case (1) Charger for Charging Case (1) USB-C to USB-C Data Cable (1) On-Ear Foam Cushion (3)  
Over-Ear Protein-leather Cushion (3) Velcro Headset Pad (3)  
Foam Windscreen for Microphone (3) Number Sticker Sheet for Headset (3) Drawstring Pouch for Headset (3) Carrying Bag (1)

### **WiTalk9 SE-4S**

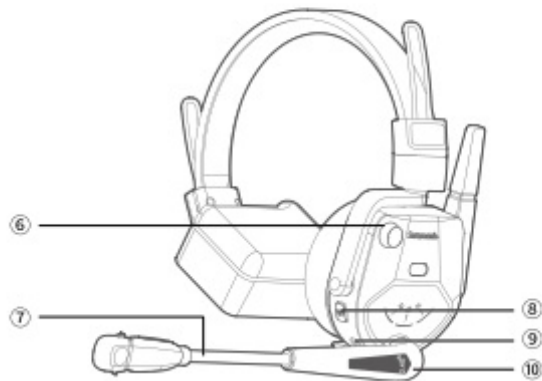
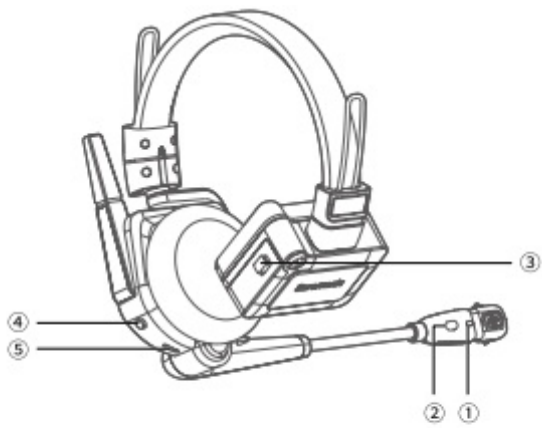
WiTalk9 SE SMH Single-ear Master Headset (1) WiTalk9 SE SRH Single-ear Remote Headset (3) Replaceable Battery (4)  
6-Slot Charging Case (1) Charger for Charging Case (1) USB-C to USB-C Data Cable (1) On-Ear Foam Cushion (4)  
Over-Ear Protein-leather Cushion (4) Velcro Headset Pad (4)  
Foam Windscreen for Microphone (4) Number Sticker Sheet for Headset (3) Drawstring Pouch for Headset (4) Carrying Bag (1)

### **WiTalk9 SE-5S**

WiTalk9 SE SMH Single-ear Master Headset (1) WiTalk9 SE SRH Single-ear Remote Headset (4) Replaceable Battery (5)  
6-Slot Charging Case (1) Charger for Charging Case (1) USB-C to USB-C Data Cable (1) On-Ear Foam Cushion (5)  
Over-Ear Protein-leather Cushion(5) Velcro Headset Pad (5)  
Foam Windscreen for Microphone (5) Number Sticker Sheet for Headset (3) Drawstring Pouch for Headset (5) Carrying Bag (1)

## **Product Structure**

### **WiTalk9 SE SMH Single-ear Master Headset / SRH Single-ear Remote Headset**



### Mic Indicator

#### Environmental Noise Cancellation (ENC) Button

Operation	Status	Mic Indicator	Voice Prompt
Press once	Strong ENC	Static green	Strong
	Weak ENC	Static blue	Weak
Press and hold for 3 seconds	Cascade connection enabled	Static purple	No
	Cascade connection disabled	Back to previous status	No

- The headset defaults to weak noise cancellation
- The cascade connection feature is turned off by For more details, please refer to “ ⑨ TRRS Jack for Wired Link ”.

## Battery Compartment Switch

Slide down the battery compartment switch to open its cover, then remove the battery for charging or insert the battery for use.

## Power Button

Press and hold for 2 seconds to power on or off. There is a voice prompt of “Power on” if turned on, or a voice prompt of “Power off” if turned off.

## USB-C Charging Port (5 V/1 A)

Plug in the USB-C to USB-C data cable to charge or connect to Saramonic app on your phone or computer for firmware updates and adjustment. (Audio transferring is not available)

**Note:** If you connect the headset to Saramonic app on your phone or computer via the USB-C to USB-C data cable, the headset cannot be charged via this cable.

## Volume Control / Announce Button (master headset)

### PTT Button (remote headset)

Operation	Function	Voice prompt
Rotate clockwise	Increase volume	No
Rotate counter clockwise	Decrease volume	No
Press and hold	Enable Announce or PTT	Du

- If you are using the remote headset, and you do not want all your voice to be captured by the microphone when you have less frequent contact with your team, it is recommended to enable the PTT function. Once activated, press the volume control to talk, and then release to You can unmute yourself by pressing the mute button once or folding down the boom.
- By activating the Announce feature on the master headset, the system will mute all paired remote headsets and their mic indicators will blink red slowly, allowing the whole team to hear the direct instructions or commands from the master headset.
- If the master headset is switched to remote mode via the mute button, its Announce feature will automatically switch to the PTT feature, and vice versa.

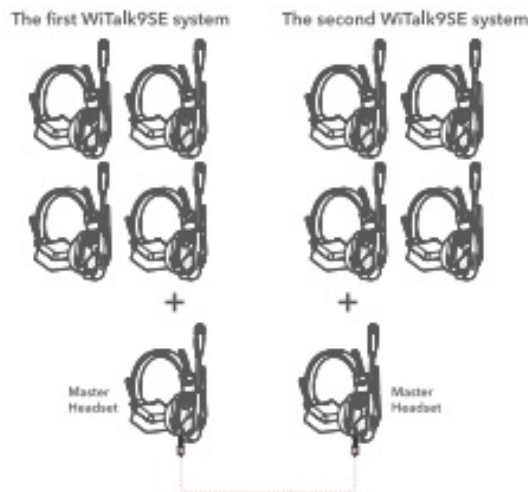
## Boom

Operation	Function	Mic Indicator	Voice Prompt
Flip up	Mute on	Static red	Du
Fold down	Mute off	Static blue / green	Du

#### Mute Button

Operation	Function	Mic Indicator	Voice Prompt
Press once	Mute on	Static red	Du
	Mute off	Static blue / green	Du

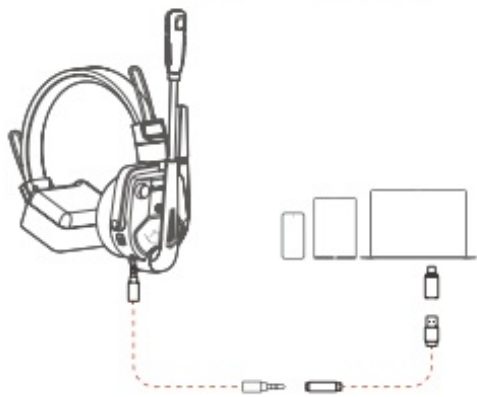
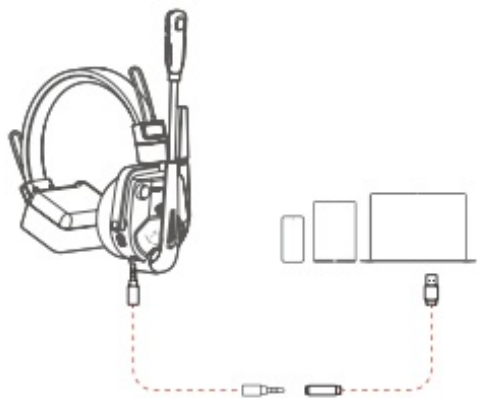
- Plug in the link cable kit to interconnect the second WiTalk9 SE system, accommodating expanded communication needs. It can be cascaded with up to 2



#### TRRS Jack for Wired Link

- Plug in the link cable kit for cascade connection (sold separately) to connect the headset to a device with a TRRS jack, achieving audio monitoring at site.





## Panel on Master / Remote Headset



M / R Indicator:

Operation	Mode	M / R Indicator
Press and hold the mute button for 5 seconds	Master headset	M indicator glows static blue
	Remote headset	R indicator glows static blue

- There is a default master headset in the WiTalk9 SE system. Any remote headset can be set as a master headset if the previous master headset shuts down due to low battery level or if the previous one is damaged.
- If the package you purchased contains more than two headsets, you can set up two master headsets to establish two independent communication **Note:** In this case, these two groups cannot communicate with each other.

#### Power Indicator:

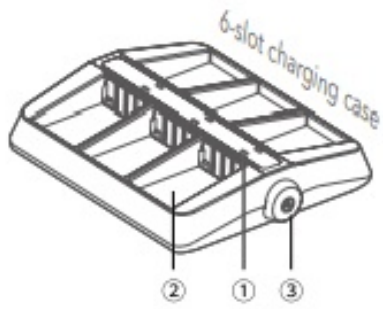
Status	Power Indicator	Voice Prompt
Unpaired or not reconnected	Blinking blue slowly	No
Disconnected (beyond operating range)	Blinking blue slowly	Disconnected (from remote headsets)
Successfully paired or reconnected	Static blue	Connected (from remote headsets)
Charging via USB-C port	Static red	No
Fully charged	Static blue	No
Low battery ( $\leq 10\%$ )	Blinking red rapidly	Battery level low (per 10 minutes)

**Note:**

- Remote headsets cannot communicate with each other if the master headset is powered off.
- The master headset will automatically power off if unpaired for 30 minutes.
- The remote headset will automatically power off if unpaired for 10 minutes.
- With the master or remote headset on, you can plug in the USB-C to USB-C data cable for charging while

**Charging Case for Battery**

When the charging case is connected to power, place batteries into it for charging.



### Charging Indicator

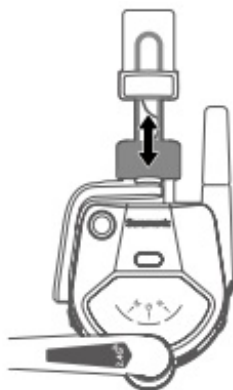
Charging      Fully charged

### Slot for Battery

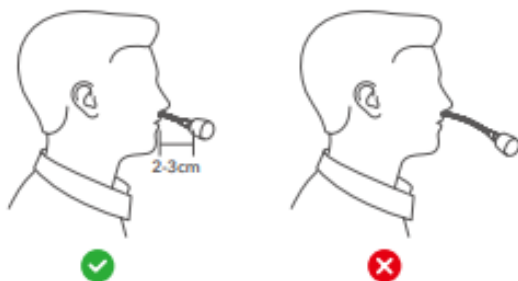
### DC Jack with A Screw Nut

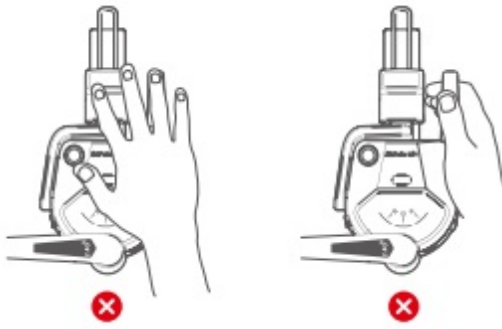
### Operation Guide

### How to Wear



1. Adjust the headband for a comfortable fit according to your head size.
2. Flexible boom with 270-degree pivot range for left- or right-side wear





1. While using, please do not cover the antenna area shown in the figure above to avoid signal interference, and do not handle the antenna to avoid damage.

## How to Use

The WiTalk9 SE system automatically pairs up right out of the box. Press and hold the power button for two seconds to turn on each headset to get used.

### Set the master headset and remote headset as required

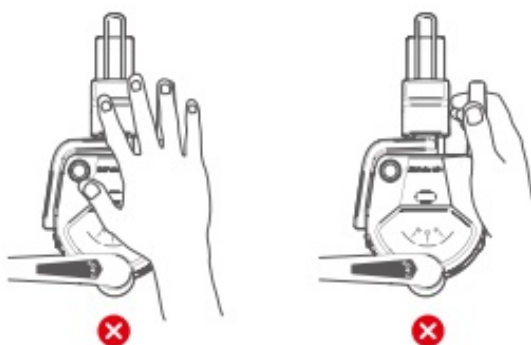
There is a default master headset (M indicator glows static blue) in the WiTalk9 SE system, but any remote headset ( R indicator glows static blue) can be set to a master headset. Press and hold the mute button for 5 seconds to set the master or remote headset.

**Note:** You need to pair up the system again after you set a remote headset to a master headset or set a master headset to a remote headset.

### How to pair

**Note:** To ensure successful pairing, it is recommended to operate the master headset to forget paired headsets before manual pairing. For more details, please refer to “How to forget paired headsets” below.

- With the master headset off, press and hold its power button for 8 seconds until its power indicator blinks blue rapidly and music plays. The master headset will then enter pairing mode.
- With the remote headset (1#) off, press and hold its power button for 8 seconds until its power indicator blinks blue rapidly and music The remote headset (1#) will then enter pairing mode. Follow this step to operate all remote headsets (2/3/4#) to enter pairing mode.
- If you hear a voice prompt “Connected” from the remote headset (1#), the connection between this remote headset (1#) and the master headset is established. All remote headsets (2/3/4#) will pair with the master headset in sequence.



## How to exit pairing mode

You will be ready to communicate with your team after the master headset exits pairing mode. Its power

indicator will glow static blue if the master headset exits pairing mode. You can operate the master headset to exit pairing mode in any of the following ways:

- The master headset will automatically exit pairing if it is fully paired (with 4 remote headsets).
- If the master headset is not fully paired, press its power button once to exit pairing mode.

## How to forget paired headsets

With the master headset off, simultaneously press and hold its power button and mute button for 3 seconds until its power indicator blinks blue and red alternately, then it will forget all paired remote headsets. The master headset will automatically shut down after successful forgetting.

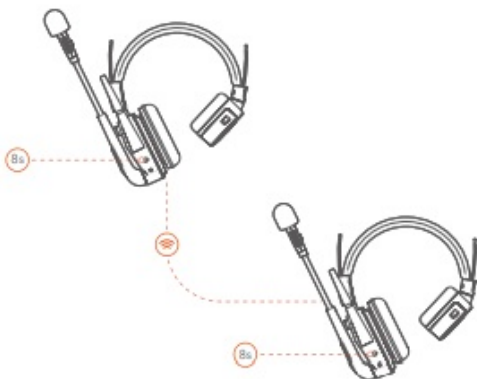
**Note:** If the master headset forgets paired headsets, all paired remote headsets will be forgotten and you do not need to operate remote headsets to forget the paired master headset.

## Other Functions

### Sidetone

Simultaneously press the volume control and mute button once to enable or disable the sidetone function, and a voice prompt of “du” will appear.

- Once this function is activated, you can hear yourself when you are speaking. There will be a hearing delay, which is normal.
- Make sure the headset is worn on your head once you activate this function, otherwise howling noise will
- This function can NOT be enabled when the headset is



### Reset

With the master headset or remote headset off, press and hold the power button and volume control at the same time for 8 seconds to reset the headset. All its indicators will glow static blue while resetting. The master headset or remote headset will shut down and all its indicators will turn off after successful resetting.

## App Control

Supports real-time monitoring of the current battery level of the master or remote headset, connection status, and their names; Supports customized names, firmware updates for the device; Supports the master headset pairing, the master headset forgetting paired headsets, the master headset's Announce feature, manually muting the remote headset, and a separate 1 v 1 communication.

Step1: Download Saramonic app on your phone or computer and launch it.

Step2: Connect the included USB-C to USB-C data cable to the USB-C charging port on the master headset and to the charging port on your phone or computer. If you are using an iPhone, iPad or other Lightning device, you should purchase a third-party USB-C to Lightning adapter for connection.

Step 3: After Saramonic app recognizes the WiTalk9 SE system, a control menu will be displayed.

## Troubleshooting

**If you encounter any problems while using the unit, please refer to the following first. If the problem still persists, please contact the dealer's after-sales services department.**

- **No sound from the remote headset after pairing with the master headset**

With the master headset and remote headset off, press and hold their power buttons for 8 seconds until the music plays to enter pairing status. If you hear a voice prompt of "Connected" from the remote headset (#1), they are paired up successfully. At this time, the master headset is waiting for other remote headsets (#2/3/4) to pair with. You need to press the master headset's power button once to exit pairing mode, then you will be ready to communicate with your team.

### **The pairing between the master headset and remote headset is unsuccessful**

- Check whether the master headset is fully paired (with 4 remote headsets). If so, the master headset is unable to enter pairing mode to pair with other remote headsets. You need to operate the master headset to forget paired headsets and pair it with the new remote headset
- Check if both of them are set to master. If so, you will need to set one of these two headsets as a remote headset via pressing and holding the mute button for 5 seconds, then pair again.

### **No sound from the headset**

- Make sure the master headset and the remote headset are paired up successfully.
- Make sure your headset is not muted. Its mic indicator glows red when You can unmute it via pressing the mute button or folding down the boom.
- Make sure the headset is not muted by Saramonic app. If it is muted by this app, you need to unmute it by this

### **Failed to power on**

Make sure the battery level of the headset is not low.

### **Voice change or noise issues**

- The 4 GHz wireless frequency can be easily attenuated or interfered. Please keep the system away from high-power Wi-Fi antennas, radios, etc. If that can not be avoided, you may need to find the right distance and angle, or change your working site.

- Make sure the cable is plugged in Try unplugging it and plugging it back in.
- If the remote headset is at the edge of the operating range, there will be a voice This is a normal phenomenon.

• **Failed to charge the battery when placed into the charging case**

- Check whether the charging case connects to power or
- Wipe the charging contacts on the battery and charging case with a clean and soft Make sure there is no dirt covering them.
- If the touch points are not firmly connected due to a lack of magnetic force, please contact our after-sales

• **The headset automatically shuts down**

When not paired or reconnected, the master headset will automatically shut down after 30 minutes and the remote headset will automatically shut down after 10 minutes.

## Specifications

### WiTalk9 SE SMH Single-ear Master Headset / SRH Single-ear Remote Headset

Transmission Range	$\geq 350$ m (without obstacles) $\geq 60$ m (with obstacles)
Modulation Mode	2.4 GHz
Sampling Rate	16 kHz / 16-bit (with 4 remote headsets connection)
Voice Delay	$\leq 140$ ms (with 4 remote headsets connection)
Receiving Sensitivity	$< -93$ dB
Noise Cancellation Depth	50 dB
Frequency Response	150 Hz – 8 kHz
Signal-to-Noise Ratio	$> 65$ dB
Distortion	$< 1\%$ @94 dB SPL, 1 kHz




Microphone Type	Electret
Input SPL	> 100 dB SPL
Output SPL	128 dB
Replaceable Battery Capacity	1450 mAh
Power Requirements	Powered by a replaceable battery / USB-C charging port
Runtime	Master headset: ≥ 24h (with 4 remote headsets connection)
	Remote headset: ≥ 24 h
Charging Time	≤ 3.5 h (charging via USB-C port in shutdown mode)
Weight	226.5 g (on-ear foam cushion and battery included)
Working Temperature	-10°C ~ 50°C
Storage Temperature	-20°C ~ 55°C

## 6-Slot Charging Case

Interface	DC jack
Dimensions	153×127×31 mm
Weight	192.5 g
Charging Power	< 20 W
Power Supply Range	12 V±10%
Current	< 1.6 A
Charging Time	≤ 3.5 h
Working Temperature	0°C ~ 50°C
Storage Temperature	-10°C ~ 60°C

***Read More About This Manual & Download PDF***

## Documents / Resources

	<p><a href="#">Saramonic WiTalk9 SE Full Duplex Wireless Intercom Headset System</a> [pdf] User Manual SMH, SRH, WiTalk9 SE Full Duplex Wireless Intercom Headset System, WiTalk9 SE, Full Duplex Wireless Intercom Headset System, Wireless Intercom Headset System, Intercom Headset System, Headset System, System</p>
---	---

## References

- [S Saramonic-Premium Microphones, Headphones and other Pro Audio Accessories](#)
- [User Manual](#)

[Manuals+](#), [Privacy Policy](#)

This website is an independent publication and is neither affiliated with nor endorsed by any of the trademark owners. The "Bluetooth®" word mark and logos are registered trademarks owned by Bluetooth SIG, Inc. The "Wi-Fi®" word mark and logos are registered trademarks owned by the Wi-Fi Alliance. Any use of these marks on this website does not imply any affiliation with or endorsement.