



Sarabec Chimeflash Sound Sensor Instruction Manual

[Home](#) » [Sarabec](#) » Sarabec Chimeflash Sound Sensor Instruction Manual 



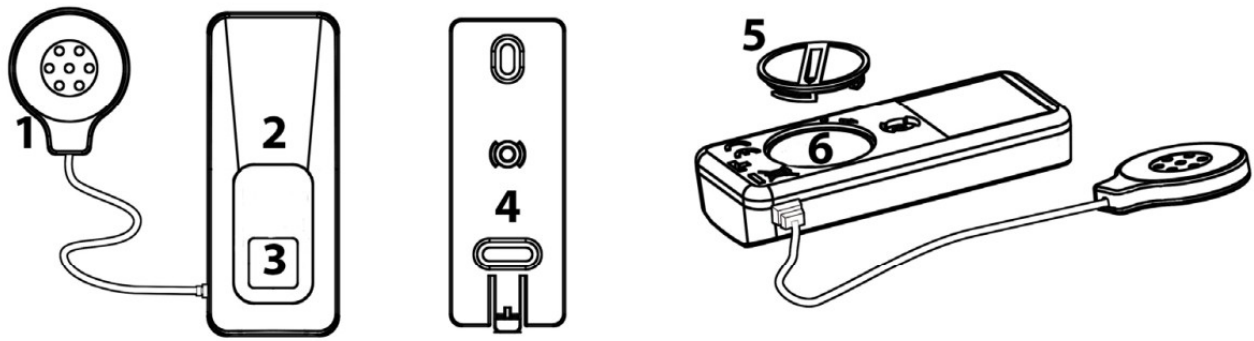
Chimeflash Sound Sensor Instruction Manual

Contents

- [1 Introduction](#)
- [2 Product Overview](#)
- [3 Installation](#)
- [4 Programming & Setup](#)
- [5 Melody Selection](#)
- [6 Documents / Resources](#)
 - [6.1 References](#)
- [7 Related Posts](#)

Introduction

The chime flash Sound Sensor will attach to any device which emits a loud repeating sound such as a doorbell, door entry system or alarm unit. It will send a wireless signal to the chime flash receiver which will alert you via extra loud sounds, ultra-bright flashing LED's and colored indicators.

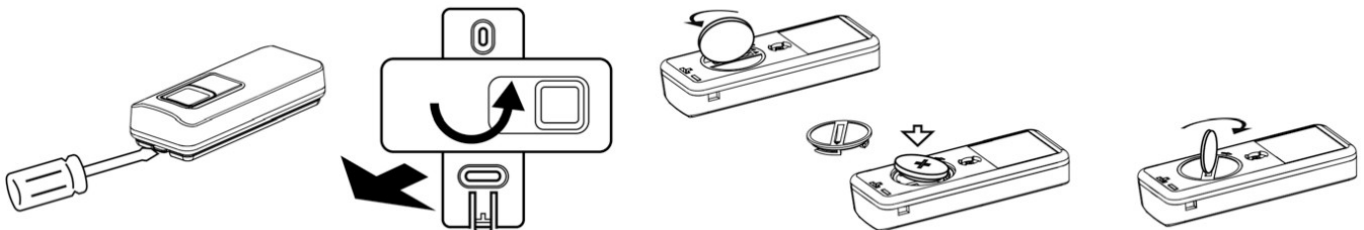


Product Overview

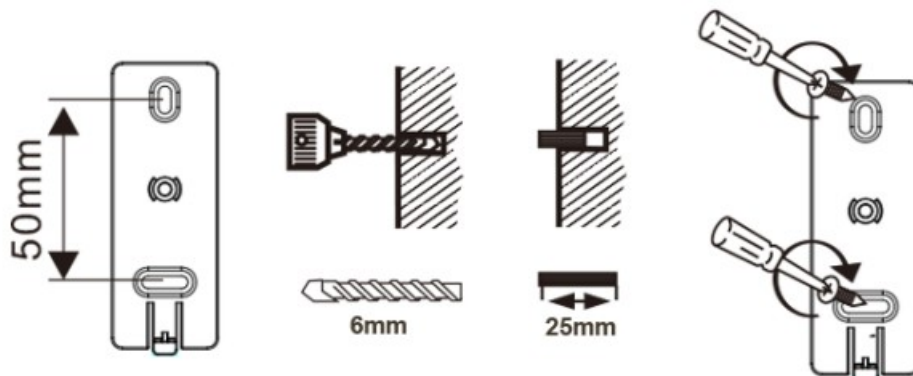
1. Acoustic Sensor
2. Indicator (Orange)
3. Test Button
4. Mounting Plate
5. Battery Cover
6. Battery Compartment

Installation

Push the locking tab slightly away from the transmitter and turn the wall bracket on the underside of the transmitter 90° to the plate. The transmitter can now be removed (pulled away) from the plate. Insert the supplied CR2032 battery as shown (Positive side upwards).



The mounting plate should be fixed next to the audio device you would like to be alerted to using the adhesive pad on the rear of the plate, or by using plugs and screws. Attach the Transmitter to the plate.

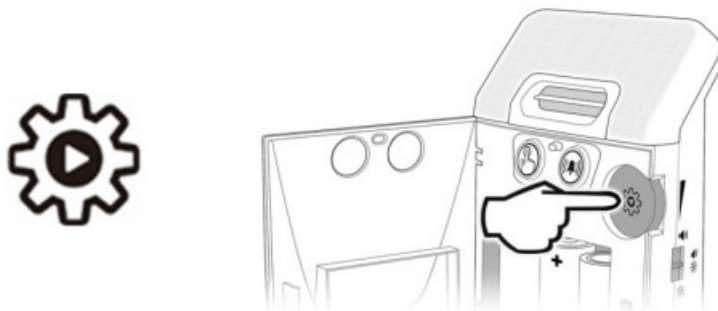


Hold the acoustic sensor on the device you would like to be alerted to (ensuring the acoustic sensor holes point towards the device) and test to confirm the sound of the connected device triggers the receiver. When you find the best position, attach the acoustic sensor using sticky tape roundels or Velcro roundels provided. Use the Velcro roundels when attaching to an uneven surface.

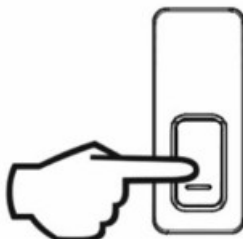
Programming & Setup

1. Press & hold the setup button for 2-3 seconds, the green doorbell symbol will illuminate and flash at a steady

rate. Press the setup button again to move to the orange bell symbol.



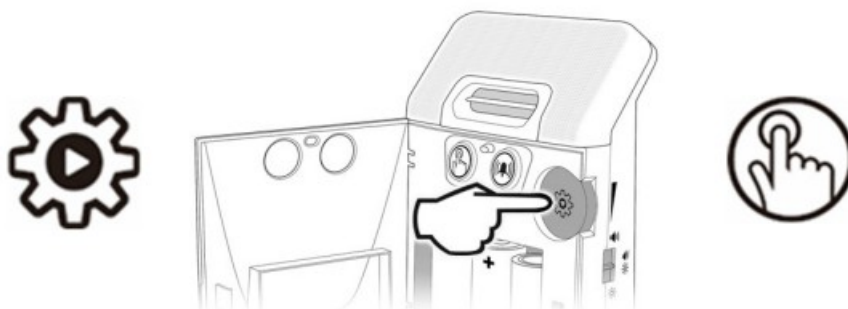
2. Press the transmitter test button, the orange symbol on the receiver will flash rapidly for 1 second and a single beep will be heard, this indicates that the bellpush and receiver are now paired.



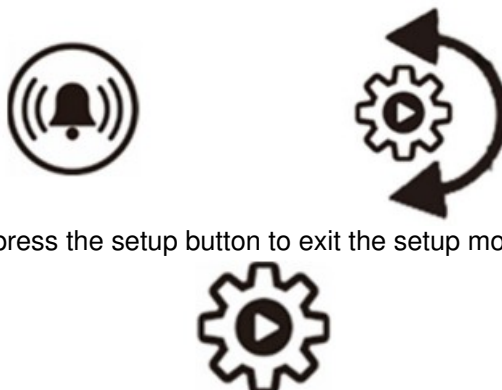
Melody Selection

If you wish to change the Melody:

Press and hold the setup button for 2-3 seconds to enter setup mode, the green symbol will steadily flash. Release the setup button.



If this is the symbol you would like to change the melody of then simply rotate the setup button until you hear the sound you wish to keep. If you wish to change the sound on the orange symbol press the setup button once, the bell symbol will flash and follow the instructions above.



Once the desired melody is heard press the setup button to exit the setup mode.

Sarabec Ltd
 15 High Force Road
 Middlesbrough
 United Kingdom
 TS2 1RH
 Telephone: 01642 247789
 email: mail@sarabec.co.uk
 website: www.sarabec.com Full system instructions available on our website. This item carries a 1 year guarantee, please contact your point of sale in the event of any issues.

Sarabec Ltd declares that chimeflash comp Statutory Instruments.
 Sarabec Ltd declares that chimeflash comp directives.
 Sarabec's EU authorised representative: H m Wörth 25, D-79576 Weil am Rhein , Ger
 The full declaration of conformity for the Ch Sarabec Ltd.

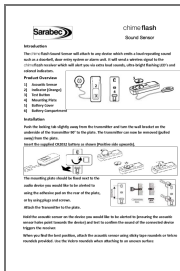


The Wheelie bin logo is the industry wide symbol for this type of product.
 The symbol, when appearing on electronic product, indicates that the item should NOT be treated as ordinary household waste when due for disposal.



Chimeflash Sound Sensor Issue 1
 October 2022

Documents / Resources



[Sarabec Chimeflash Sound Sensor \[pdf\] Instruction Manual](#)
 Chimeflash Sound Sensor, Chimeflash, Sound Sensor, Sensor

References

- [Hearing Equipment - Personal Listeners, Loud Alarm Clocks, Loud Phones, and Hearing Loops - Sarabec Hearing Products](#)