

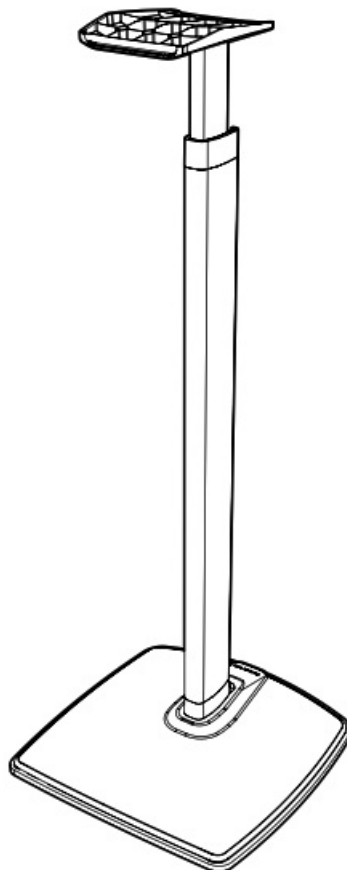


# SANUS WSSE3A1 Adjustable-Height Stand Instruction Manual

[Home](#) » [SANUS](#) » SANUS WSSE3A1 Adjustable-Height Stand Instruction Manual 



**Height-Adjustable Speaker Stand  
For SONOS® Era 300™**



WSSE3A1 / WSSE3A2  
**INSTRUCTION MANUAL**

## We'll Make It Stress-Free

If you have any questions along the way, just give us a call.

US: +1 (800) 359-5520

EMEA: +31 (0) 495 580 852

UK: +44 (0) 800 056 2853

**We're ready to help!**

### Contents

#### [1 IMPORTANT SAFETY INSTRUCTIONS](#)

#### [2 Dimensions](#)

#### [3 Parts and Hardware](#)

#### [4 Documents / Resources](#)

#### [5 Related Posts](#)

## IMPORTANT SAFETY INSTRUCTIONS

- **PLEASE READ ENTIRE MANUAL PRIOR TO USE**
- **SAVE THESE INSTRUCTIONS**

Before getting started, let's make sure this product is perfect for you!  
This stand is designed to support only Sonos® Era 300™ speakers.

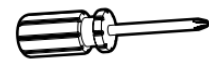
**CAUTION:** Avoid potential personal injuries and property damage!

- Check your speaker owner's manual to see if there are any special requirements for mounting your speaker.
- Please read through these instructions completely to be sure you're comfortable with this easy install process.
- Do not use this product for any purpose not explicitly specified by manufacturer.
- Manufacturer is not responsible for damage or injury caused by incorrect assembly or use.
- If you do not understand these instructions or have doubts about the safety of the installation, assembly or use of this product, contact Customer Service at US:  
+1 (800) 359-5520 • EMEA: +31 (0) 495 580 852 • UK: +44 (0) 800 056 2853.

**Speaker  
Weight Limit**  
**DO NOT  
EXCEED**

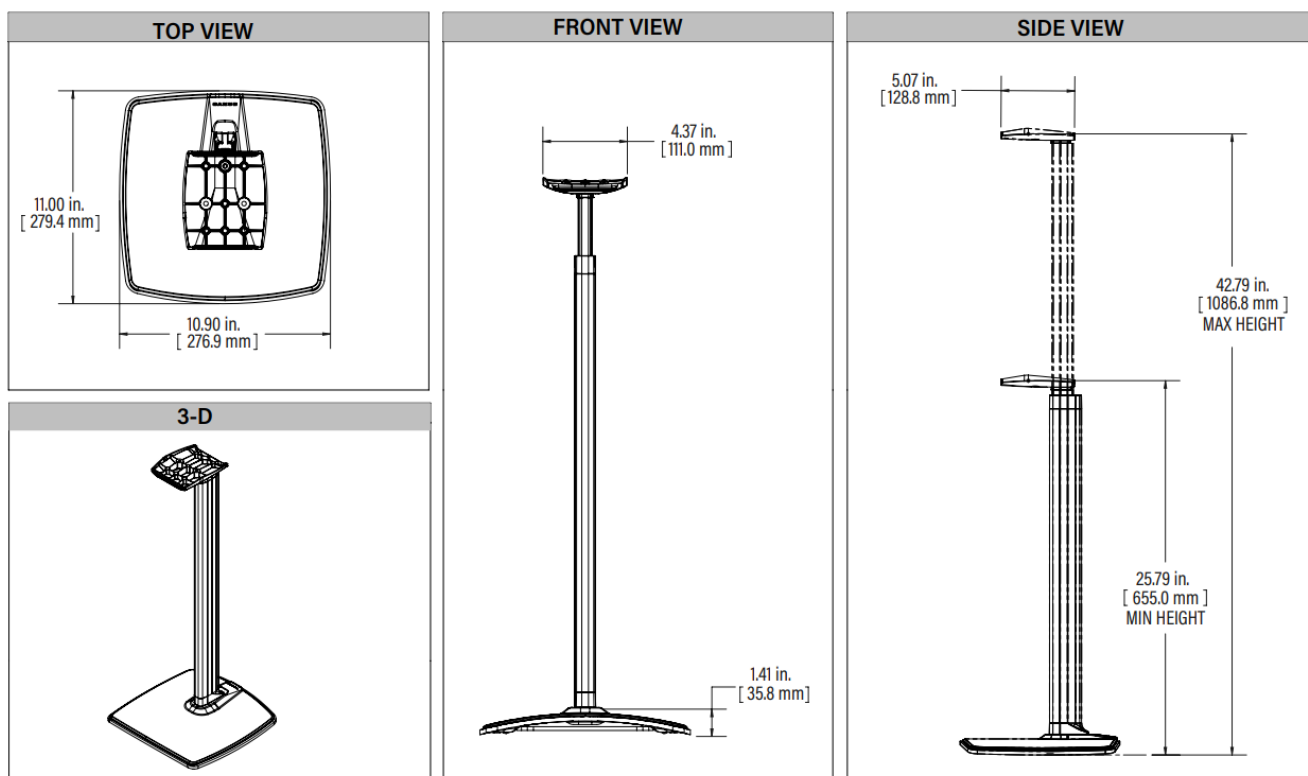


### Tool Needed



Screwdriver

## Dimensions



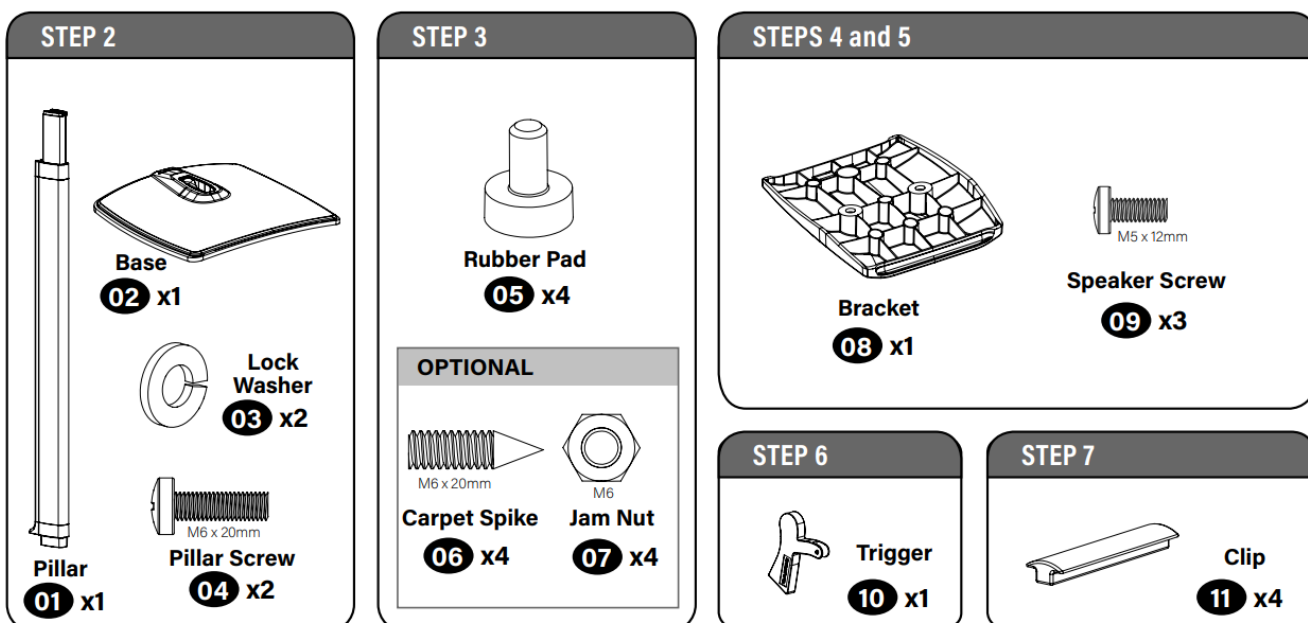
## Parts and Hardware



**WARNING:** This product contains small items that could be a choking hazard if swallowed. Before starting assembly, verify all parts are included and undamaged. If any parts are missing or damaged, do not return the damaged item to your dealer; contact Customer Service. Never use damaged parts!

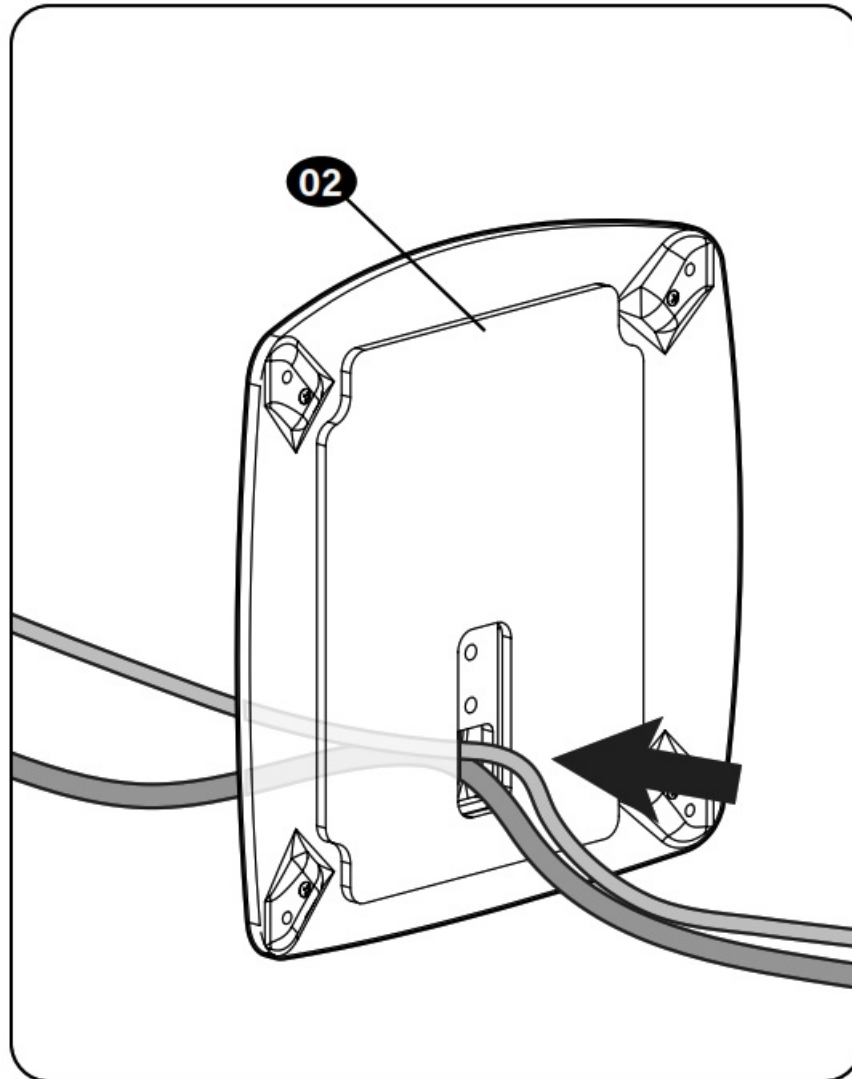


**NOTE:** Not all hardware included will be used. Quantities shown are for one speaker stand.



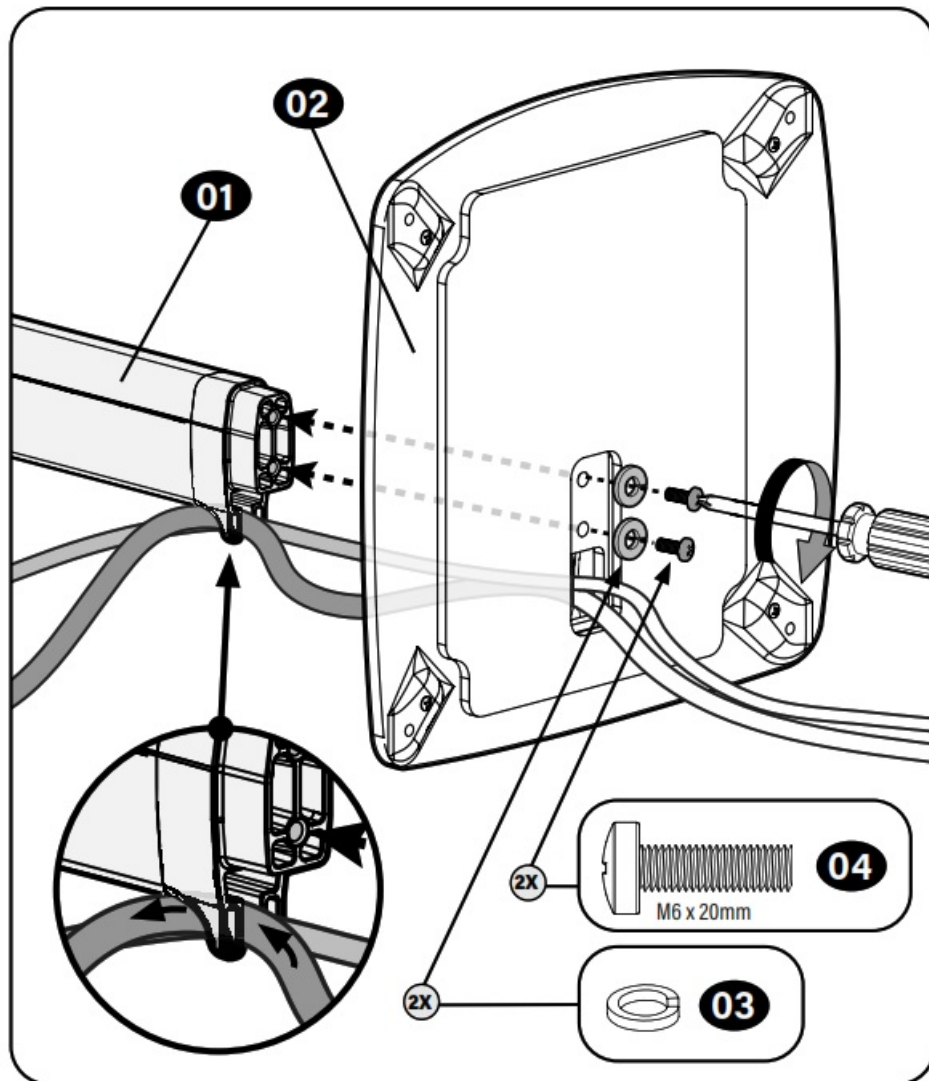
Route Cable(s)

## STEP 1



**Attach Base to Pillar**

## STEP 2

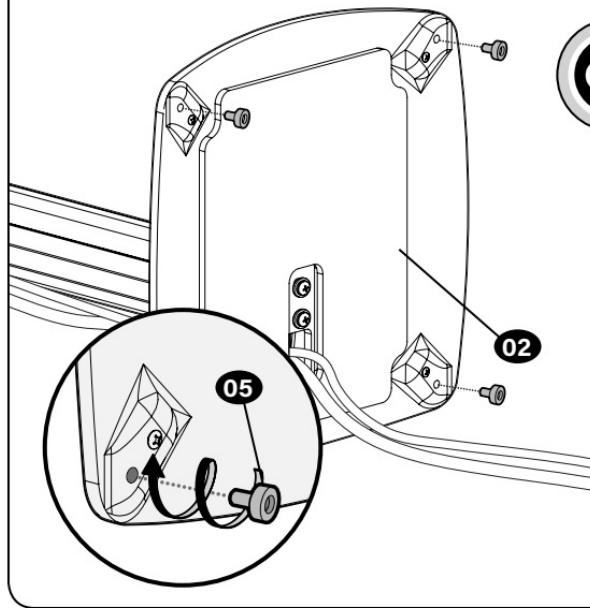


Install Rubber Pads -or- Carpet Spikes

## STEP 3

### Rubber Pads

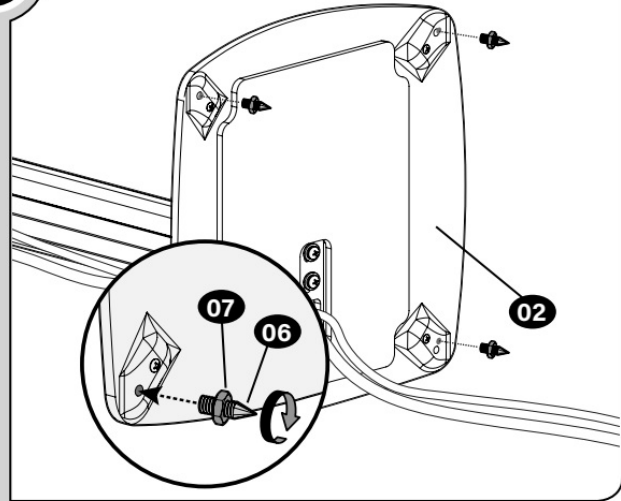
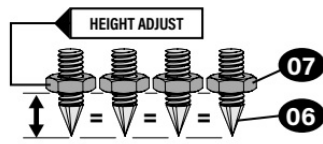
Twist rubber pads **05** into the base **02**.



OR

### Optional Carpet Spikes

**WARNING:** The ends of carpet spikes **06** are sharp and may scratch flooring, damage wiring, or be hazardous to children.

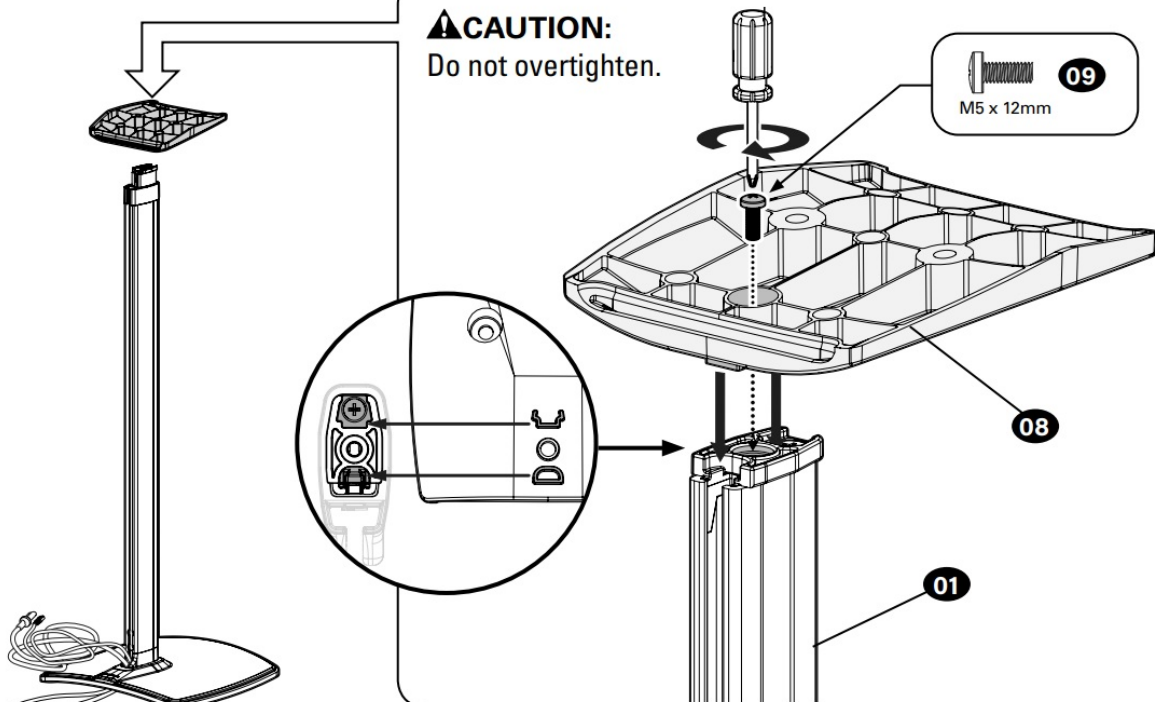


6  
Attach Bracket to Pillar

## STEP 4

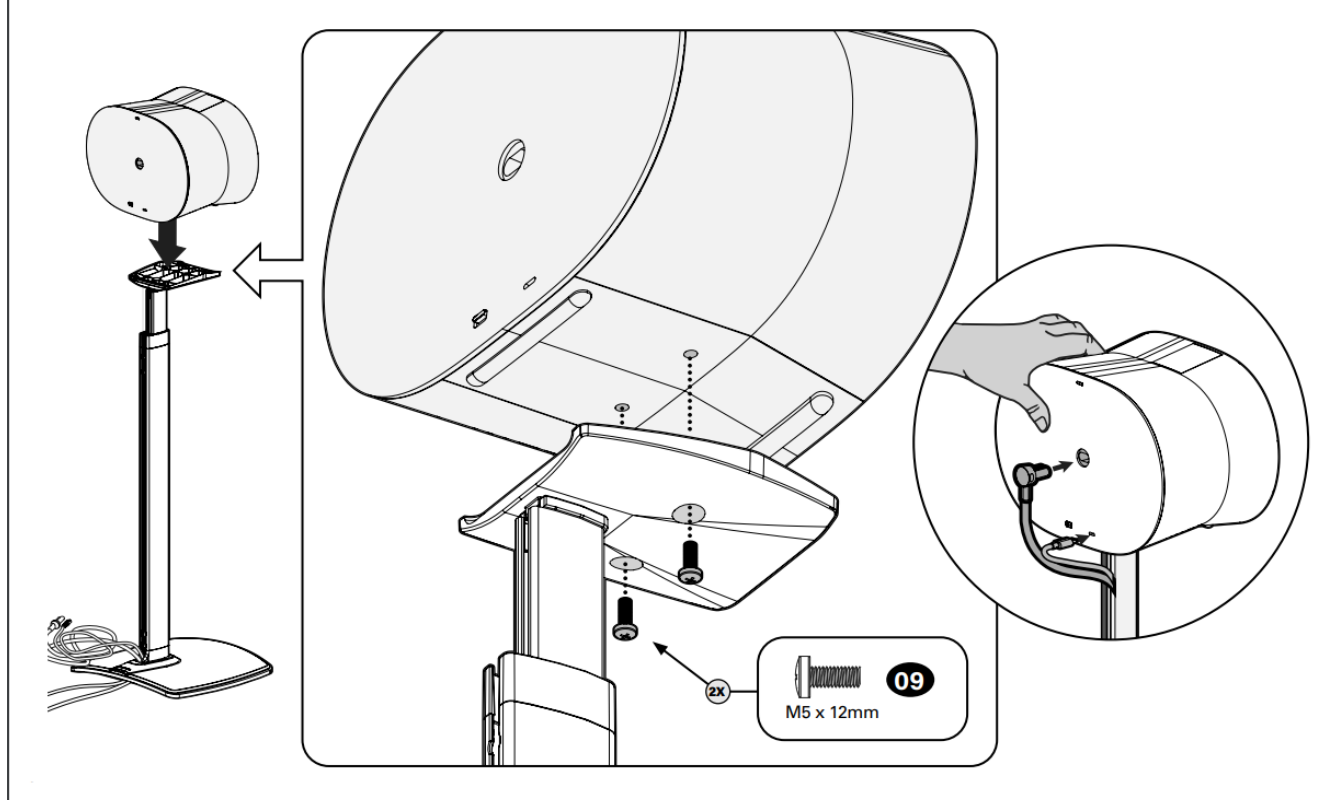
**CAUTION:**  
Do not overtighten.

**09**  
M5 x 12mm



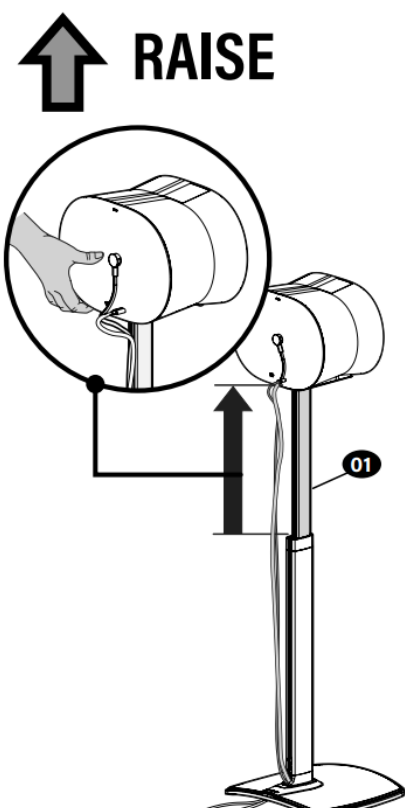
Install Speaker

## STEP 5



Height Adjustment

## STEP 6



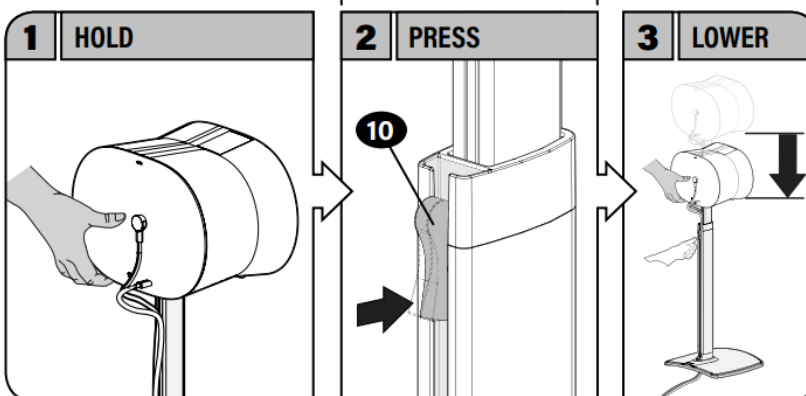
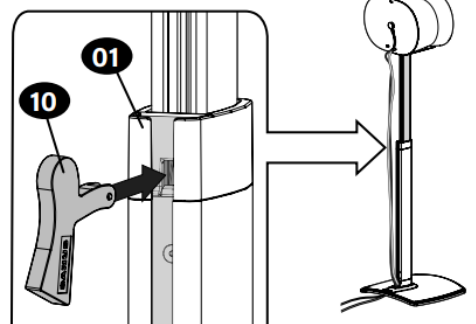
Secure Cable(s)

## LOWER

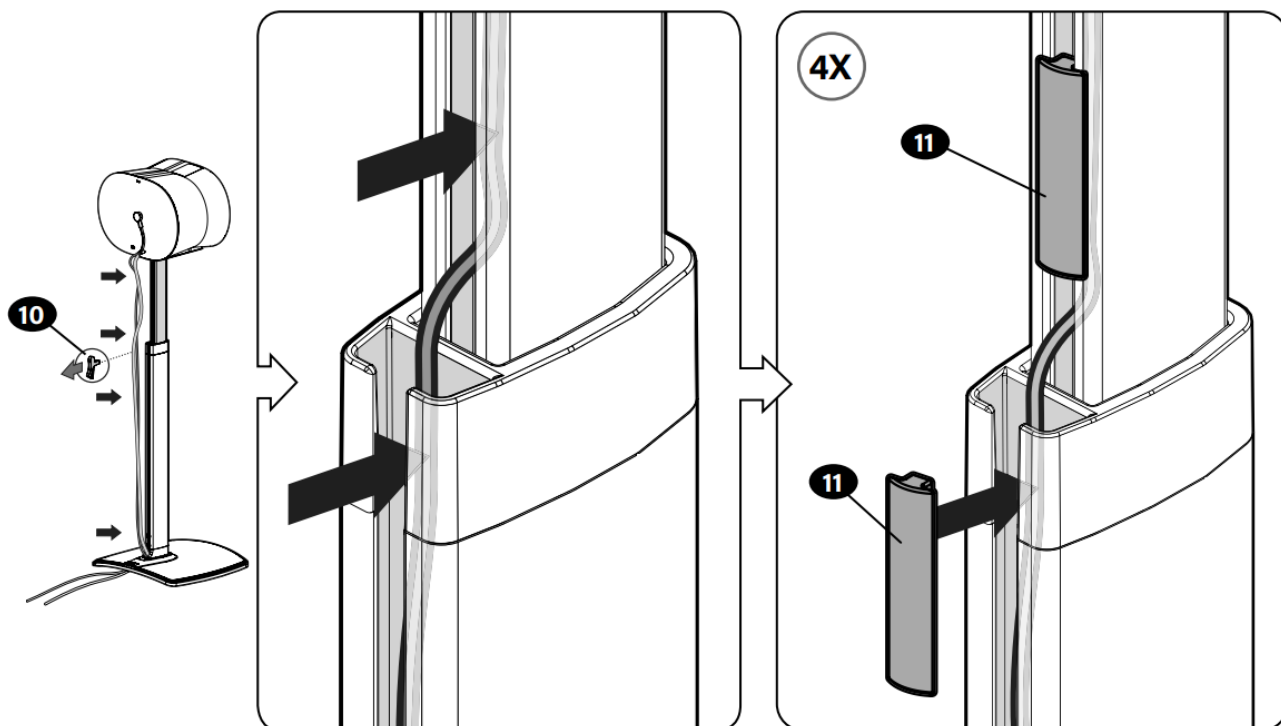
**CAUTION:** Avoid potential personal injuries and property damage!

Hold upper post **01** BEFORE pressing trigger button **10**.

Trigger button **10** is removable to prevent accidental lowering, or to route cables into post **01** (STEP 7).



## STEP 7



enjoy

**SANUS®**

A brand of **legrand**

**Thank you for choosing SANUS!** Please take a moment to let us know how we did:

Legrand AV Inc.  
6436 City West Parkway  
Eden Prairie, MN 55344 USA  
US: +1 (800) 359-5520

Legrand AV Netherlands B.V.  
Franklinstraat 14  
6003 DK Weert Netherlands  
UK: +44 (0) 800 056 2853  
EMEA: +31 (0) 495 580 852

Authorized Representative for the  
UK  
Starline Holding Technology Ltd.  
Unit C Island Road  
Reading RG2 0RP UK

Legrand AV Inc. and its affiliated corporations and subsidiaries (collectively, “Legrand”), intend to make this manual accurate and complete. However, Legrand AV makes no claim that the information contained herein covers all details, conditions, or variations. Nor does it provide for every possible contingency in connection with the installation or use of this product. The information contained in this document is subject to change without notice or obligation of any kind. Legrand AV makes no representation of warranty, expressed or implied, regarding the information contained herein. Legrand AV assumes no responsibility for accuracy, completeness or sufficiency of the information contained in this document.

©2022 Legrand AV Inc. All rights reserved. SANUS is a brand of Legrand. SANUS and the SANUS logo are registered trademarks of Legrand.

Sonos and Sonos product names are trademarks or registered trademarks of Sonos, Inc. All other brand names or marks are used for identification purposes and are trademarks of their respective owners.

6901-603037 00  
Legrand AV Inc.  
6436 City West Parkway  
Eden Prairie, MN 55344 USA

Documents / Resources

	<a href="#">SANUS WSSE3A1 Adjustable-Height Stand</a> [pdf] Instruction Manual WSSE3A1 Adjustable-Height Stand, WSSE3A1, Adjustable-Height Stand, Height Stand, Stand
------------------------------------------------------------------------------------	--------------------------------------------------------------------------------------------------------------------------------------------------------------------------