



SAMSUNG V5 From Basics to Brilliance Instruction Manual

[Home](#) » [Samsung](#) » SAMSUNG V5 From Basics to Brilliance Instruction Manual 

SAMSUNG

Relentless Innovation
for your diagnostic confidence

V5

From basics to brilliance



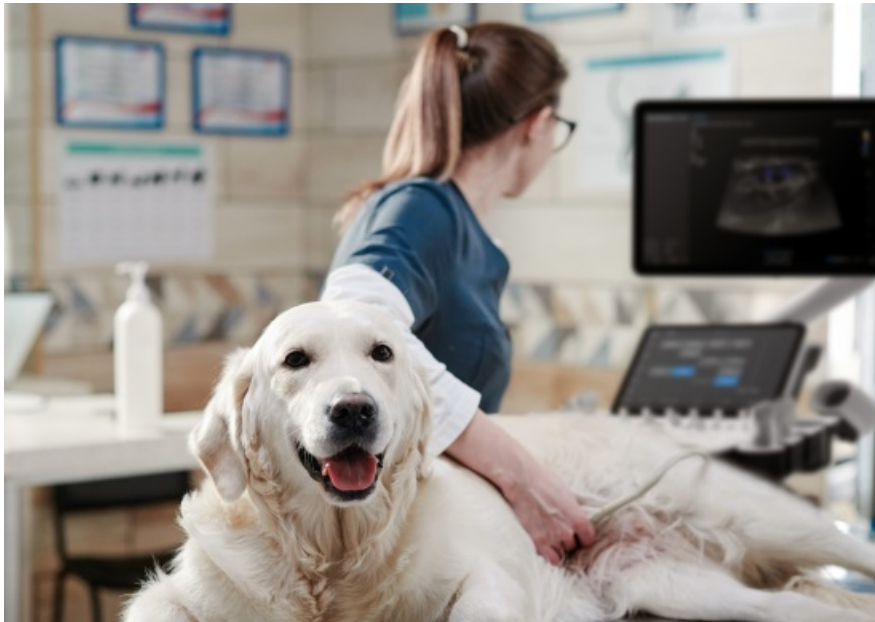
V5 ultrasound system product catalog for Veterinary care

Contents

- 1 From basics to brilliance
- 2 Achieve veterinary precision with superior imaging
- 3 Unlock veterinary care with advanced diagnostics
- 4 Enhance daily efficiency
- 5 Comprehensive selection of transducers
- 6 Documents / Resources
 - 6.1 References

From basics to brilliance

Elevate your veterinary care to new levels of efficiency with our advanced ultrasound system. Designed specifically for veterinary use, this system combines exceptional image clarity with sophisticated automation features to streamline your daily operations. It's equipped with a state-of-the-art imaging engine that ensures reliable performance during every scan. Our user-friendly interface simplifies the workflow, reducing the strain on your daily tasks and enhancing usability. Additionally, the system's portable design with battery capability offers unparalleled convenience, making it a reliable partner in your veterinary practice to meet all your daily ultrasound needs.

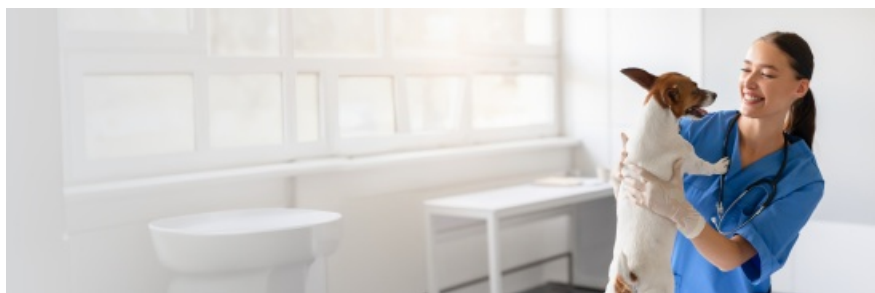


Learn more



Achieve veterinary precision with superior imaging

The V5 ultrasound system excels in veterinary settings with its exceptional 2D and color image quality, specifically optimized for the unique challenges of animal care. It is engineered to meet the varied demands of veterinary diagnostics, ensuring clear and accurate image acquisition across different species and sizes. This system supports veterinarians in their daily scanning tasks, providing enhanced confidence and precision in every examination. Ideal for both routine health checks and complex diagnostic needs, the V5 is an indispensable tool in veterinary practices, enhancing diagnostic capabilities and improving animal care outcomes.



Reduce noise to improve 2D image quality

The noise reduction filter enhances the edge contrast and creates sharp 2D images for optimal diagnostic performance. In addition, ClearVision provides application-specific optimization and advanced temporal resolution in live scan mode.

Clean up blurry areas in the image

HQ-Vision™ provides clear images by mitigating the characteristics of ultrasound images that are slightly blurred than the actual vision.

Visualize slow flow in microvascular structures

MV-Flow™1 visualizes microcirculatory and slow blood flow to display the intensity in color. It is suitable for observation of microcirculatory and volume of slow blood flow.

Show blood flow in vessels in a 3D like display

LumiFlow™1 is a function that visualizes blood flow in three dimensional-like to help understand the structure of blood flow and small vessels intuitively.

Examine peripheral vessels with directional Power Doppler

S-Flow™, The function uses directional power doppler technology, enabling you to examine even the peripheral vessels. It displays information on the intensity and direction of blood flow.

Provide uniform imaging performance from near-to-far

S-Harmonic™ mitigates the signal noise, enhances contrast, and provides uniform image performance of overall image area from near-to-far.

Unlock veterinary care with advanced diagnostics



Streamline your veterinary diagnostics with the V5, tailored for diverse veterinary needs.

Equipped with advanced automation features, the V5 enhances workflow efficiency and diagnostic reliability. Its compact design and user-friendly interface allow you to focus more effectively on patient care, making it a vital tool for any veterinary practice. The V5 delivers accurate, dependable results, ensuring confidence in every diagnosis.



An automated reporting tool for heart diagnosis

HeartAssist™1, a feature based on Deep Learning technology, provides automatic classification of ultrasound image into measurement views required for heart diagnosis and provides measurement results.

Display needle tip clearly

With pinpoint precision, NeedleMate+™1 delineates needle location when performing interventions such as nerve blocks. Improved accuracy and efficiency in procedure are possible with beam steering added to NeedleMate+™.

Display and quantify tissue stiffness in a non-invasive method

S-Shearwave Imaging™1 allows for non-invasive assessment of the stiffness of tissue/lesions in various applications such as breast and liver. The color-coded elastogram, quantitative measurements, dual or single display option, and user-selectable ROI functions are especially useful for the accurate diagnosis of breast and liver diseases.

Display in extended field-of-view

Panoramic+1 imaging displays as an extended field-of-view so users can examine wide areas that do not fit into one image as a single image. Panoramic+ imaging also supports angular scanning from linear transducer data acquisition.



Enhance daily efficiency

The V5 ultrasound system enhances efficiency with advanced workflow solutions, remote accessibility, a larger screen view, and a compact, robust structure with convenient battery. These elements make it ideal for veterinarians seeking to improve productivity and animal care.

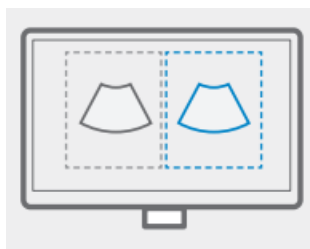
Continue working even when AC power is temporarily unavailable

BatteryAssist™ provides battery power to the system, enabling users to perform scans when AC power is temporarily unavailable. It also allows to transport the ultrasound system to another location and start to scan right away.



Compare previous and current exam in a side-by-side display

EzCompare™ automatically matches the image settings, annotations, and bodymarkers from the prior study.



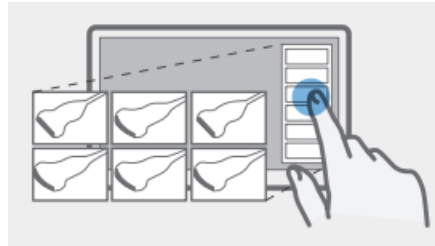
Build predefined protocols to ensure every step is followed every time

EzExam+™ enables you to build or use a predefined protocol, and assign protocols for examinations that are regularly performed in the hospital in order to reduce the number of steps that you have to go through.



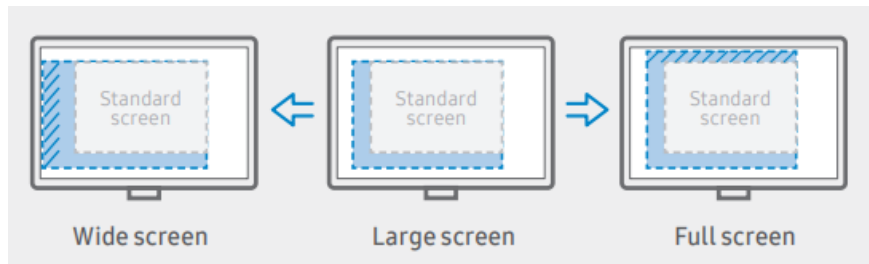
Select transducer and preset combinations in one click

QuickPreset allows the user to select the most common transducer and preset combinations in one click.



See images in expanded view

The ultrasound examination can be performed while viewing the images and cines that are expanded at various ratios according to the user preference.



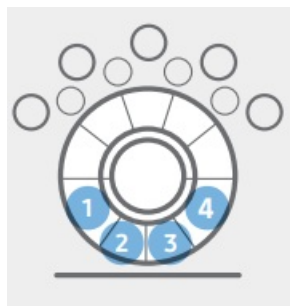
Customize frequently used functions on the touchscreen

TouchEdit, a customizable touchscreen, allows the user to move frequently used functions to the first page.



Assign functions to the buttons near the trackball

The buttons around the trackball can be customized for easy selection of commonly used functions.



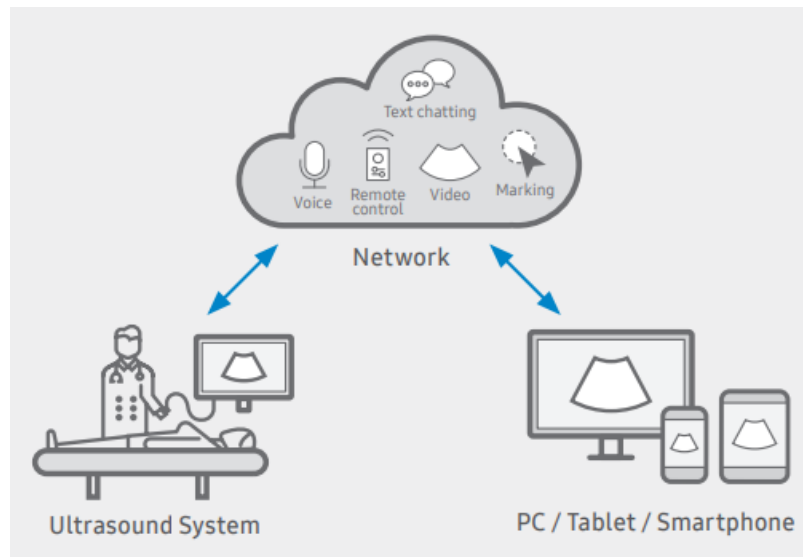
Real-time image sharing solution

SonoSync™1, 2 is available in PC and smartphone, etc. as a real-time image share solution that allows communication for care guide and training between doctors and sonographers. In addition, voice chatting, text

chatting, video conference, and real- timemarking functions are provided for better communication; and the MultiVue function is included that allows monitoring multiple ultrasound images on a single screen.



<http://m.site.naver.com/0XxQR>



Samsung healthcare cybersecurity

To address the emerging need for cybersecurity, Samsung provides a solution to support our customers by offering the tools to protect against cyberthreats that may compromise invaluable patient data and ultimately degrade the quality of care.

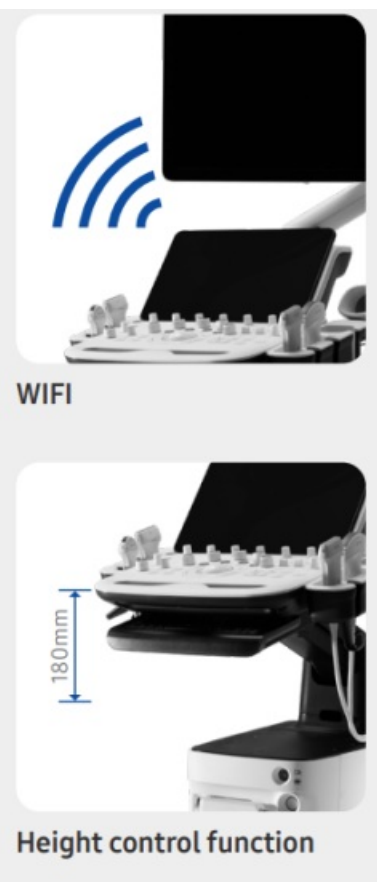


<http://m.site.naver.com/0XxQR>

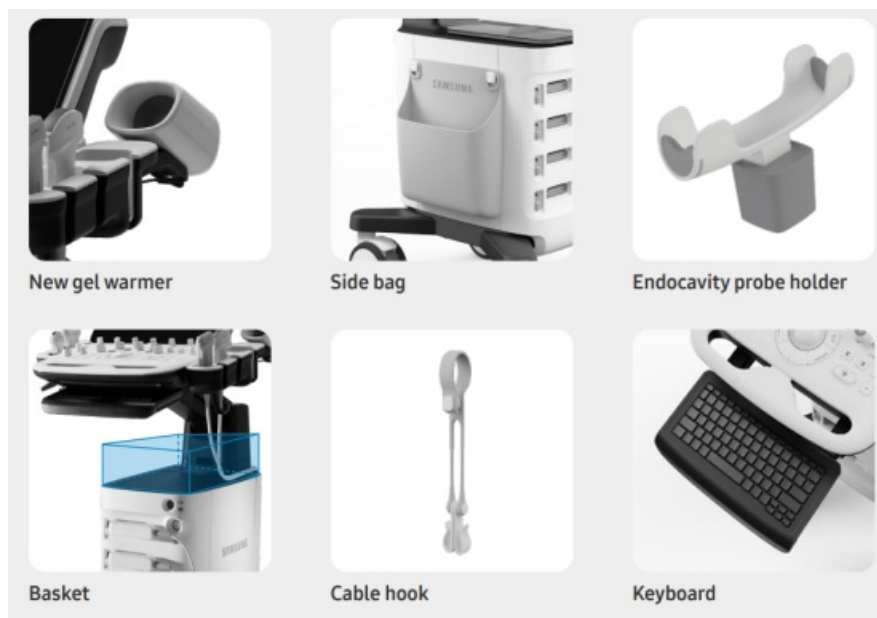




Functions



Accessories1



Comprehensive selection of transducers

Curved array transducers

Abdomen, Obstetrics, Gynecology, Pediatric, Musculoskeletal, Vascular, Urology, Thoracic



Abdomen, Obstetrics, Gynecology, Pediatric, Musculoskeletal, Vascular, Urology

Phased array transducer

Abdomen, Pediatric, Vascular



Cardiac, Vascular, Abdomen, Pediatric, TCD

Linear array transducers

Abdomen, Pediatric, Musculoskeletal, Vascular, Small parts



Abdomen, Pediatric, Musculoskeletal, Vascular, Small parts
Musculoskeletal, Pediatric, Vascular, Small parts, Dermatology



Musculoskeletal, Intraoperative, Dermatology

* Ergonomic transducers

The new endocavity transducer supports natural grip by moving the max-width point to a more forward position and also increasing the length of the grip to allow balanced weight distribution.



Cleaning and disinfection guide
<http://m.site.naver.com/0XxR7>

- This product, features, options, and transducers may not be commercially available in some countries.
- Sales and Shipments are effective only after the approval by the regulatory affairs.
Please contact your local sales representative for further details.
- This product is a medical device, please read the user manual carefully before use.
- S-Vue Transducer™ is the name of Samsung's advanced transducer technology.

1. Optional feature, additional purchase required.
2. SonoSync™ is a function for image sharing, not for diagnosis.

SAMSUNG MEDISON CO., LTD.

© 2024 Samsung Medison All Rights Reserved.

Samsung Medison reserves the right to modify the design, packaging, specifications, and features shown herein, without prior notice or obligation.

SAMSUNG

Documents / Resources



[SAMSUNG V5 From Basics to Brilliance](#) [pdf] Instruction Manual

V5 From Basics to Brilliance, V5, From Basics to Brilliance, Basics to Brilliance, to Brilliance

References

- [User Manual](#)

Manuals+, Privacy Policy

This website is an independent publication and is neither affiliated with nor endorsed by any of the trademark owners. The "Bluetooth®" word mark and logos are registered trademarks owned by Bluetooth SIG, Inc. The "Wi-Fi®" word mark and logos are registered trademarks owned by the Wi-Fi Alliance. Any use of these marks on this website does not imply any affiliation with or endorsement.