

**SAMSUNG
S32DG80*S
Series OLED
Display And
Smart**



SAMSUNG S32DG80*S Series OLED Display And Smart Instructions

[Home](#) » [Samsung](#) » SAMSUNG S32DG80*S Series OLED Display And Smart Instructions 

Contents

- 1 SAMSUNG S32DG80*S Series OLED Display And Smart
- 2 Specifications
- 3 Product Usage Instructions
- 4 FAQs
- 5 Before Using the Product
- 6 Installation
- 7 Operation
- 8 Cleaning
- 9 Preparations
- 10 Control Panel
- 11 Connections
- 12 Specifications
- 13 Documents / Resources
 - 13.1 References

SAMSUNG

SAMSUNG S32DG80*S Series OLED Display And Smart



Specifications

- **Model:** S32DG80*S, S34DG85*S
- **Supported Resolutions:** VESA DMT, VESA CVT, CTA-861, CVT Custom FreeSync (for AMD graphics card) and Adaptive-Sync (for NVIDIA graphics card) support

Product Usage Instructions

- **Before Using the Product**
 - **Safety Precautions:**
 - **Warning:** A serious or fatal injury may result if instructions are not followed.
 - **Caution:** Personal injury or damage to properties may result if instructions are not followed.
 - **Electricity and Safety:**
 - **Caution:** Do not disconnect the power cord while the product is being used. Only use the power cord provided with your product by Samsung. Do not use the power cord with other products. Keep the power socket where the power cord is connected unobstructed.
- **Installation**
 - **Preparations:**
 - **Attach the Stand:** Follow the instructions provided to correctly attach the Stand to the product.
 - **Check the space around the product:** Ensure there is enough space for proper ventilation and operation of the product.
 - **Adjust Product Tilt and Height:** Customize the tilt and height of the product for comfortable viewing.
 - **Attach the Wall Bracket:** If wall-mounting, follow the steps to securely attach the wall bracket to the product.
 - **Rotate the Product:** Adjust the orientation of the product as needed.
- **Connections**
 - **Ports:**

- Connect the product to various devices using the available ports. Refer to the user manual for detailed instructions on port connections.
- **Tidying Up Cables**
 - Organize and secure connected cables to prevent clutter and ensure safety.
- **Operation**
 - **Cleaning:**
 - Use a soft, dry cloth to clean the product. Avoid using harsh chemicals or abrasive materials that may damage the screen or casing.
 - **Correct Posture:**
 - Ensure you maintain a proper posture while using the product to prevent strain or discomfort.

FAQs

- **Q: What should I do if I encounter a technical issue with the product?**
 - **A:** If you experience any technical issues, refer to the user manual for troubleshooting steps. If the problem persists, contact customer support for assistance.
- **Q: Can I use a different power cord with the product?**
 - **A:** It is recommended to only use the power cord provided by Samsung with the product to ensure safe and proper operation.

Product Guide

The color and appearance may differ depending on the product, and the specifications are subject to change without prior notice to improve the performance. The contents of this manual are subject to change without notice to improve quality. © Samsung Samsung owns the copyright for this manual. Use or reproduction of this manual in parts or entirety without the authorization of Samsung is prohibited. Trademarks other than that of Samsung are owned by their respective owners.

An administration fee may be charged in the following situations:







- **(a)** An engineer is called out at your request, but it is found that the product has no defect (i.e., where the user manual has not been read).
- **(b)** You bring the unit to a repair center, but it is found that the product has no defect (i.e., where the user manual has not been read).

You will be informed of the administration fee amount before a technician visits.

Before Using the Product

Safety Precautions

- **Warning**
 - A serious or fatal injury may result if instructions are not followed.
- **Caution**
 - Personal injury or damage to properties may result if instructions are not followed.

CAUTION			
RISK OF ELECTRIC SHOCK. DO NOT OPEN.			
CAUTION: TO REDUCE THE RISK OF ELECTRIC SHOCK, DO NOT REMOVE COVER (OR BACK). THERE ARE NO USER SERVICEABLE PARTS INSIDE. REFER ALL SERVICING TO QUALIFIED PERSONNEL.			
	This symbol indicates that high voltage is present inside. It is dangerous to make any kind of contact with any internal part of this product.		AC voltage: Rated voltage marked with this symbol is AC voltage.
	This symbol indicates that this product has included important literature concerning operation and maintenance.		DC voltage: Rated voltage marked with this symbol is DC voltage.
	Class II product: This symbol indicates that a safety connection to electrical earth (ground) is not required. If this symbol is not present on a product with a mains lead, the product MUST have a reliable connection to protective earth (ground).		Caution. Consult instructions for use: This symbol instructs the user to consult the user manual for further safety related information.

Electricity and Safety

• Warning

- Do not use a damaged power cord or plug, or a loose power socket.
- Do not use multiple products with a single power socket.
- Do not touch the power plug with wet hands.
- Insert the power plug in so it is not loose.
- Connect the power plug to a grounded power socket (type 1 insulated devices only).
- Do not bend or pull the power cord with force. Be careful not to leave the power cord under a heavy object.
- Do not place the power cord or product near heat sources.
- Clean any dust around the pins of the power plug or the power socket with a dry cloth.

• Caution

- Do not disconnect the power cord while the product is being used.
- Only use the power cord provided with your product by Samsung. Do not use the power cord with other products.
- Keep the power socket where the power cord is connected unobstructed.
- The power cord must be disconnected to cut off power to the product when an issue occurs.
- Hold the plug when disconnecting the power cord from the power socket.

Installation

• Warning

- DO NOT PLACE CANDLES, INSECT REPELLANTS, OR CIGARETTES ON TOP OF THE PRODUCT. DO NOT INSTALL THE PRODUCT NEAR HEAT SOURCES.
- Keep the plastic packaging out of the reach of children.
 - Children may suffocate.

- Do not install the product on an unstable or vibrating surface (insecure shelf, sloped surface, etc.)
 - The product may fall and become damaged or cause an injury.
 - Using the product in an area with excess vibration may damage the product or cause a fire.
- Do not install the product in a vehicle or a place exposed to dust, moisture (water drips, etc.), oil, or smoke.
- Do not expose the product to direct sunlight, heat, or a hot object such as a stove.
 - The product lifespan may be reduced or a fire may result.
- Do not install the product within the reach of young children.
 - The product may fall and injure children.
- Edible oil (such as soybean oil) may damage or distort the product. Keep the product away from oil pollution. Do not install or use the product in the kitchen or near the kitchen stove.

• **Caution**

- Do not drop the product while moving.
- Do not set down the product on its front.
- When installing the product on a cabinet or shelf, make sure that the bottom edge of the front of the product is not protruding.
 - The product may fall and become damaged or cause an injury.
 - Install the product only on cabinets or shelves of the right size.
- Set down the product gently.
 - Product failure or personal injury may result.
- Installing the product in an unusual place (a place exposed to a lot of fine dust, chemical substances, extreme temperatures, or a significant presence of moisture, or a place where the product will operate continuously for an extended period) may seriously affect its performance.
 - Be sure to consult the Samsung Customer Service Centre if you want to install the product at such a place.
- Before assembling the product, place the product down on a flat and stable surface so that the screen is facing downwards.
 - The product is curved. Placing pressure on the product when on a flat surface may damage the product. When the product is on the ground facing up or down, do not put pressure on it.

Operation

• **Warning**

- There is a high voltage inside the product. Never disassemble, repair, or modify the product yourself.
 - Contact the Samsung Customer Service Centre for repairs.
- To move the product, first disconnect all the cables from it, including the power cord.
- If the product generates abnormal sounds, a burning smell, or smoke, disconnect the power cord immediately and contact the Samsung Customer Service Centre.
- Do not let children hang from the product or climb on top of it.
 - Children may become injured or seriously harmed.
- If the product is dropped or the outer case is damaged, turn off the power and disconnect the power cord. Then contact the Samsung Customer Service Centre.
 - Continued use can result in a fire or electric shock.
- Do not leave heavy objects or items that children like (toys, sweets, etc.) on top of the product.

- The product or heavy objects may fall as children try to reach for the toys or sweets resulting in a serious injury.
- During a lightning or thunderstorm, power off the product and remove the power cord.
- Do not drop objects on the product or apply impact.
- Do not move the product by pulling the power cord or any cable.
- If a gas leakage is found, do not touch the product or power plug. Also, ventilate the area immediately.
- Do not lift or move the product by pulling the power cord or any cable.
- Do not use or keep combustible spray or an inflammable substance near the product.
- Ensure the vents are not blocked by tablecloths or curtains.
 - An increased internal temperature may cause a fire.
- Do not insert metallic objects (chopsticks, coins, hairpins, etc) or objects that burn easily (paper, matches, etc) into the product (via the vent or input/output ports, etc).
 - Be sure to power off the product and disconnect the power cord when water or other foreign substances have entered the product. Then contact the Samsung Customer Service Centre.
- Do not place objects containing liquid (vases, pots, bottles, etc) or metallic objects on top of the product.
 - Be sure to power off the product and disconnect the power cord when water or other foreign substances have entered the product. Then contact the Samsung Customer Service Centre.
- Do not use liquid fumigators containing chemicals, such as mosquito repellent or aerial freshener, around the product.
 - If steam comes in contact with the product surface or enters the product, it may cause stains or malfunction.

• **Caution**

- Leaving the screen fixed on a stationary image for an extended period may cause afterimage burn-in or defective pixels.
 - Set the screen to the power-saving mode or moving-picture screen saver when not using the product for an extended period.
- Disconnect the power cord from the power socket if you do not plan on using the product for an extended period (vacation, etc).
 - Dust accumulation combined with heat can cause a fire, electric shock, or electric leakage.
- Use the product at the recommended resolution and frequency.
 - Your eyesight may deteriorate.
- Do not hold the product upside-down or move it by holding the stand.
 - The product may fall and become damaged or cause an injury.
- Looking at the screen too close for an extended period can deteriorate your eyesight.
- Do not use humidifiers or stoves around the product.
- Rest your eyes for more than 5 minutes or look at distant objects for every 1 hour of product use.
- Do not touch the screen when the product has been turned on for an extended period as it will become hot.
- Store small accessories out of the reach of children.
- Exercise caution when adjusting the product angle or stand height.
 - Your hand or finger may get stuck and injured.
 - Tilting the product at an excessive angle may cause the product to fall and an injury may result.
- Do not place heavy objects on the product.

- Product failure or personal injury may result.

Cleaning

High-glossy models can develop white stains on the surface if an ultrasonic wave humidifier is used nearby. Contact your nearest Samsung Customer Service Centre if you want to clean the inside of the product (Service fee will be charged.) Do not press the product screen with your hands or other objects. There is a risk of damaging the screen. Exercise care when cleaning as the panel and exterior of advanced LCDs are easily scratched. Take the following steps when cleaning.

1. Power off the product and PC.
2. Disconnect the power cord from the product.
 - Hold the power cord by the plug and do not touch the cable with wet hands. Otherwise, an electric shock may result.
3. Wipe the product with a clean, soft, and dry cloth.
 - Wet a soft cloth in water, wring it out well, and then use the cloth to wipe the exterior of the product clean.
 - Do not apply a cleaning agent that contains alcohol, solvent, or surfactant to the product.
 - Do not spray water or detergent directly on the product.
4. Connect the power cord to the product when cleaning is finished.
5. Power on the product and PC.

Correct posture to use the product



Use the product in the correct posture as follows:

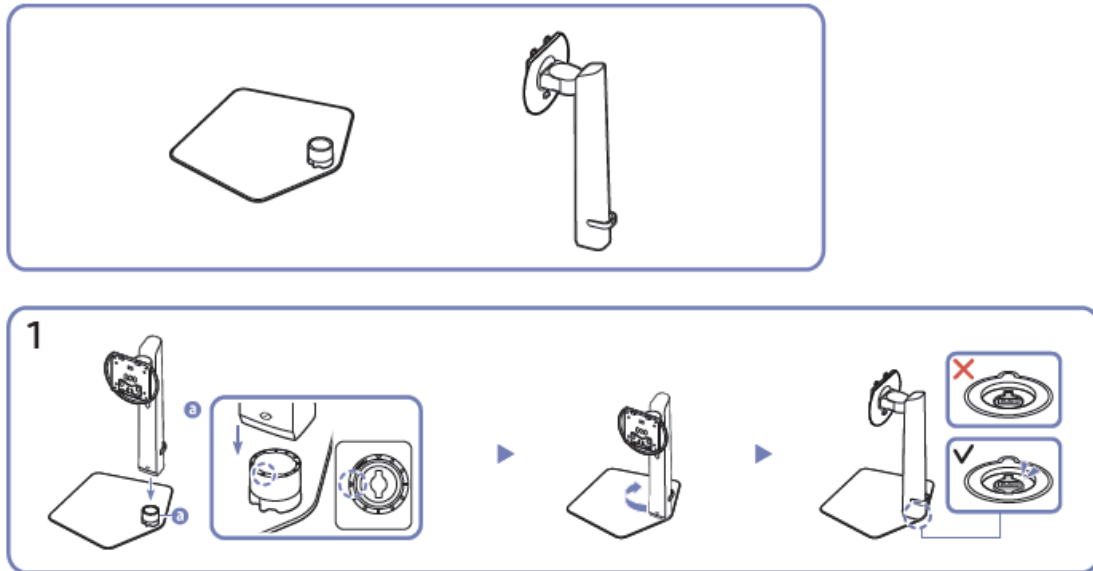
- Straighten your back.
- Allow a distance of 45 to 50cm between your eye and the screen, and look slightly downward at the screen.
- Keep your eyes directly in front of the screen.
- Adjust the angle so the light does not reflect on the screen.
- Keep your forearms perpendicular to your upper arms and level with the back of your hands.
- Keep your elbows at about a right angle.
- Adjust the height of the product so you can keep your knees bent at 90 degrees or more, your heels attached to the floor, and your arms lower than your heart.
- Do the Eye exercises or blink frequently, then eye fatigue will be relieved.

Preparations

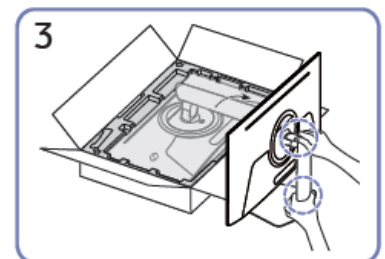
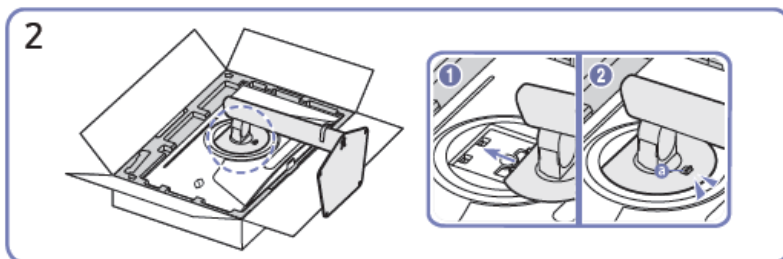
Installation Attaching the Stand

- Before assembling the product, place the product down on a flat and stable surface so that the screen is facing downwards.
- Disassembly is the reverse order of assembly.

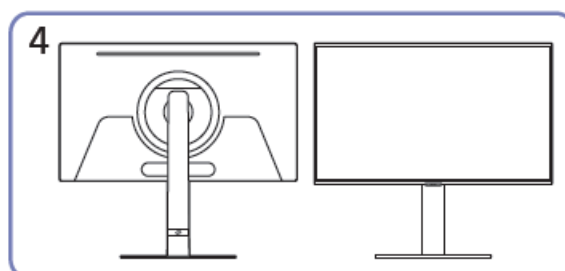
S32DG80*S



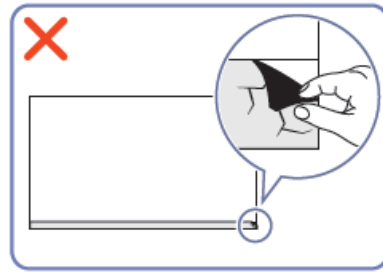
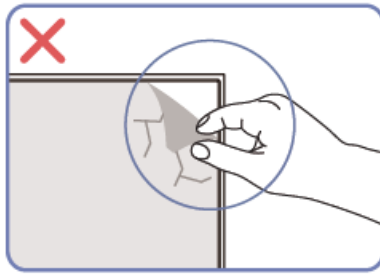
1. Check the direction of the arrow on the stand base. Align the direction of the arrow on the stand base with the front direction of the stand neck, and then insert the stand neck from top to bottom. Turn the stand neck clockwise to fasten it to the base. Lift the stand slightly and check that the PUSH button on the bottom of the base protrudes.
2. Push the assembled stand into the main body in the direction of the arrow as shown in the figure. Confirm that the stand is tightly fastened. If **A** has not been fully lowered, lower it while holding it with your hand.
3. Stand up the monitor as shown in the figure.



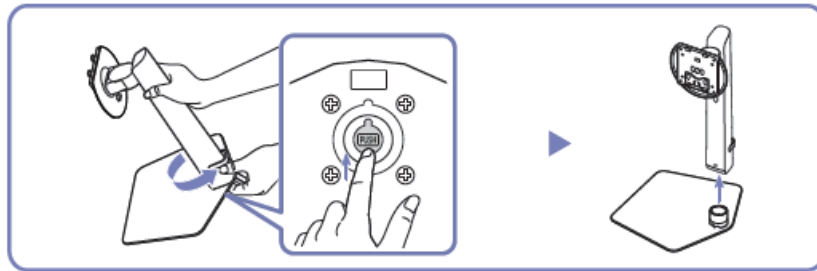
4. Stand assembly is complete.



- **Caution:** Do not arbitrarily remove the panel film. If not observed, the warranty service may be restricted.

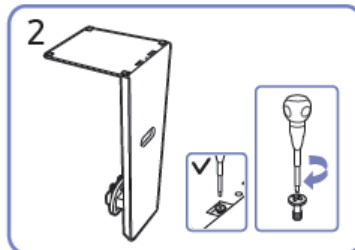
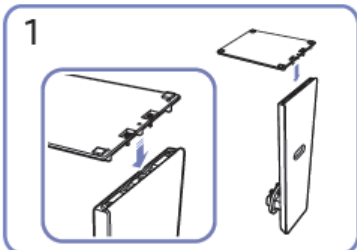
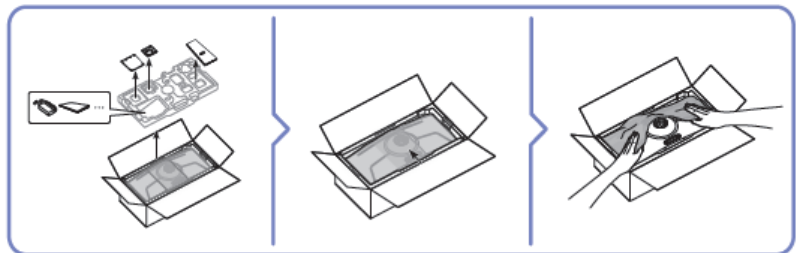
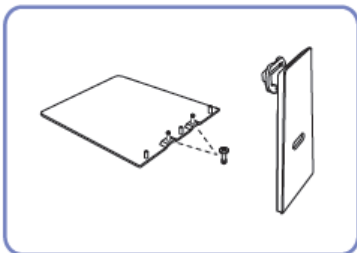


Separating the stand neck from the stand base

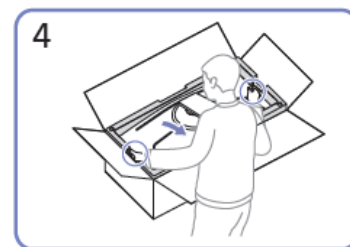
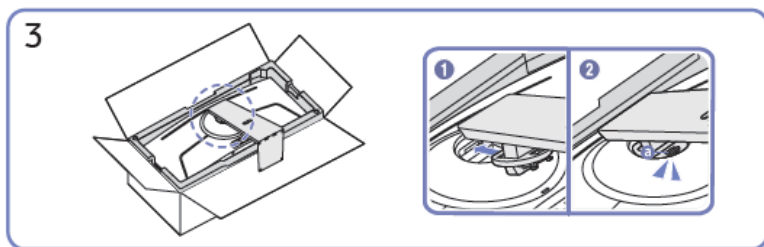


Lift the assembled stand slightly and press the PUSH button on the bottom of the base. While holding down the PUSH button, turn the stand neck anticlockwise to remove it.

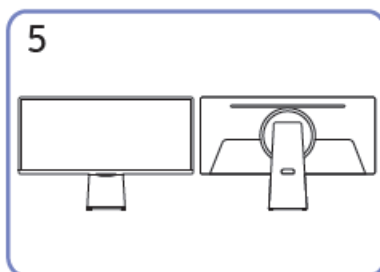
S34DG85*S



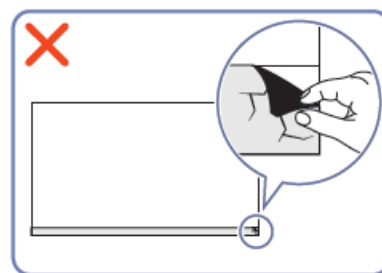
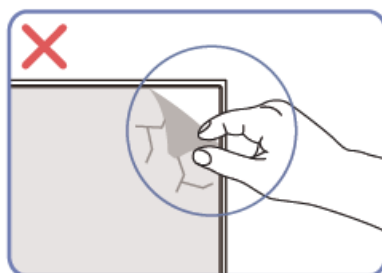
1. Put the stand base onto the stand neck in the direction shown in the figure. Check that the stand neck is firmly connected.
2. Tightly fasten the connecting screw at the bottom of the stand base.
3. Push the assembled stand into the main body in the direction of the arrow as shown in the figure. Confirm that the stand is tightly fastened. If **A** has not been fully lowered, lower it while holding it with your hand.
4. Stand up the monitor as shown in the figure.



5. Stand assembly is complete.



- **Caution:** Do not arbitrarily remove the panel film. If not observed, the warranty service may be restricted.

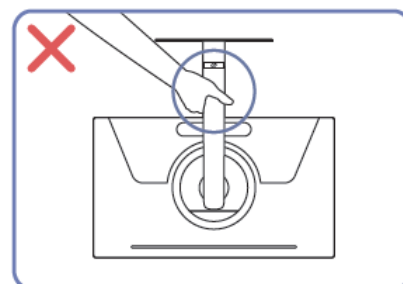
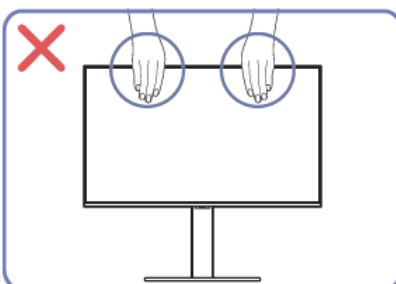
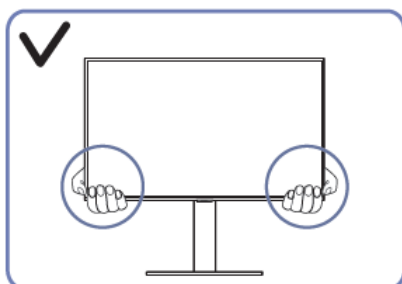


Precautions for moving the product

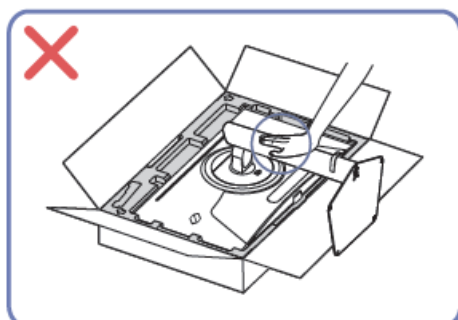
The color and shape of parts may differ from what is shown.

S32DG80*S

- Hold the lower corners or edges of the product when moving it.
- Do not directly apply pressure on the screen. Do not hold the screen when moving the product.
- Do not hold the product upside down only by the stand.

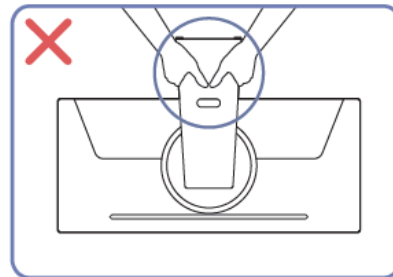
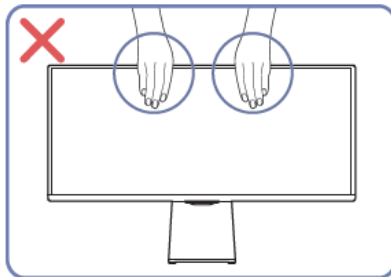
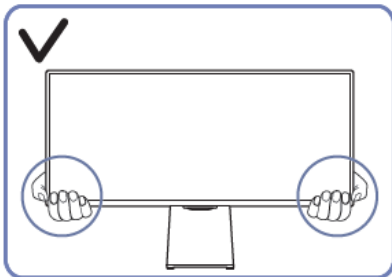


- Do not press down on the product. There is a risk of damaging the product.
- Be careful and ensure that your fingers are not caught.

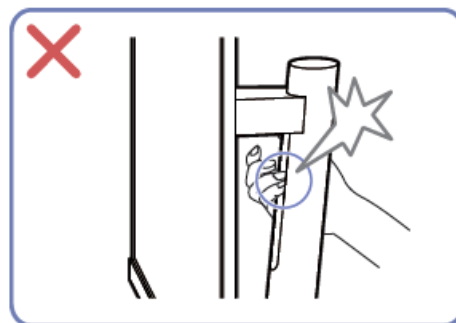
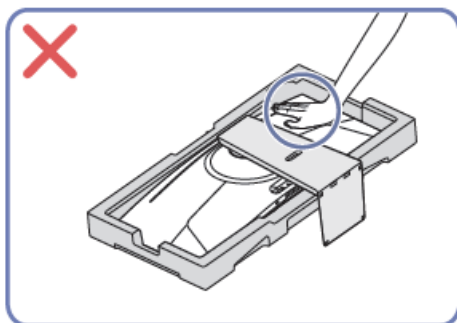


S34DG85*S

- Hold the lower corners or edges of the product when moving it.
- Do not directly apply pressure on the screen. Do not hold the screen when moving the product.
- Do not hold the product upside down only by the stand.



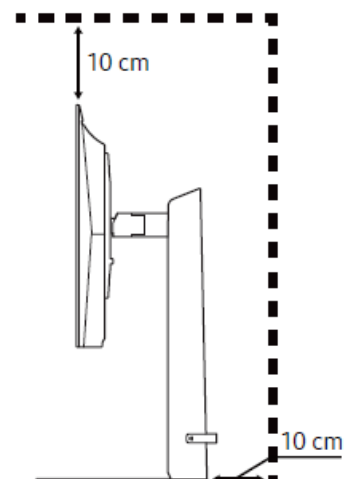
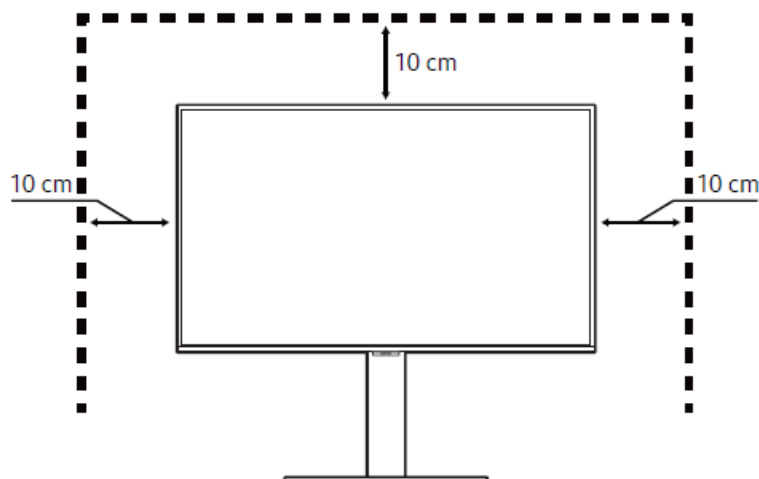
- Do not press down on the product. There is a risk of damaging the product.
- Be careful and ensure that your fingers are not caught.



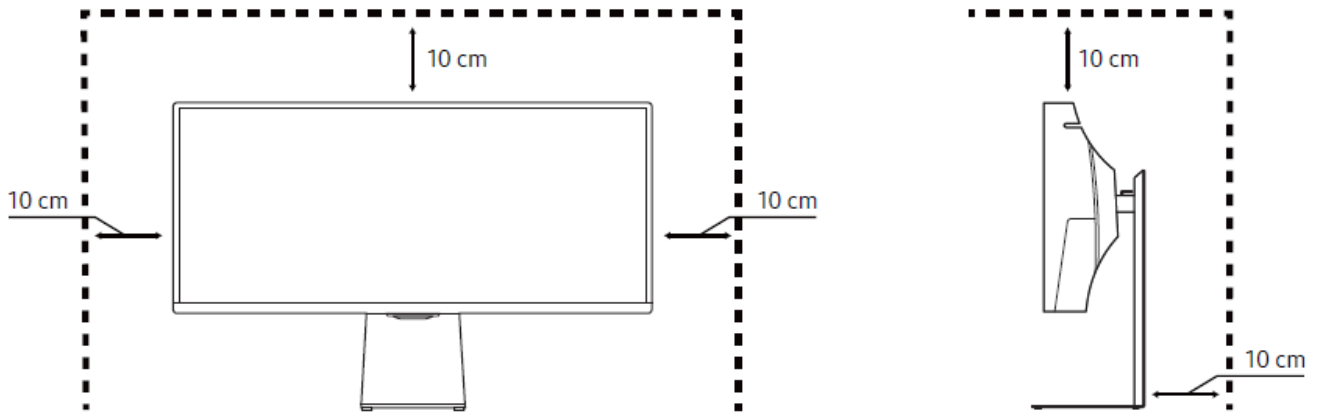
Checking the space around the product

Make sure to have enough space for ventilation when placing the product. An internal temperature rise may cause fire and damage the product. Maintain enough space around the product as shown in the diagram when installing the product. The exterior may differ depending on the product.

• S32DG80*S



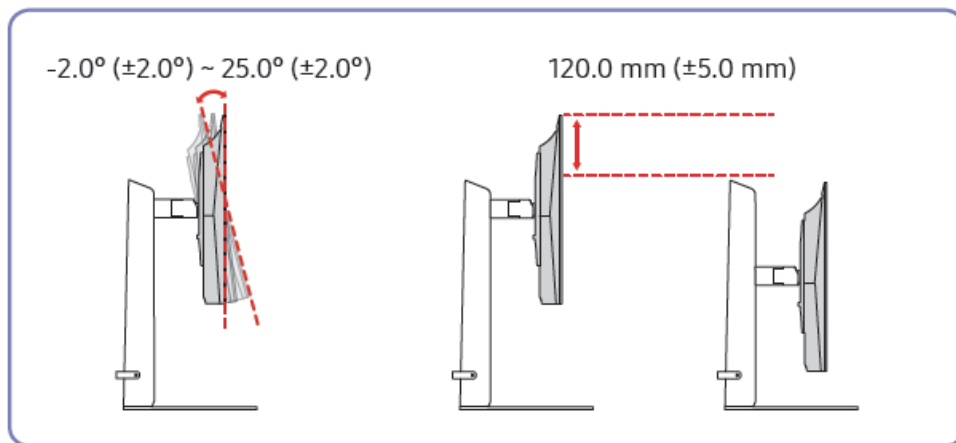
• S34DG85*S



Adjusting the Product Tilt and Height

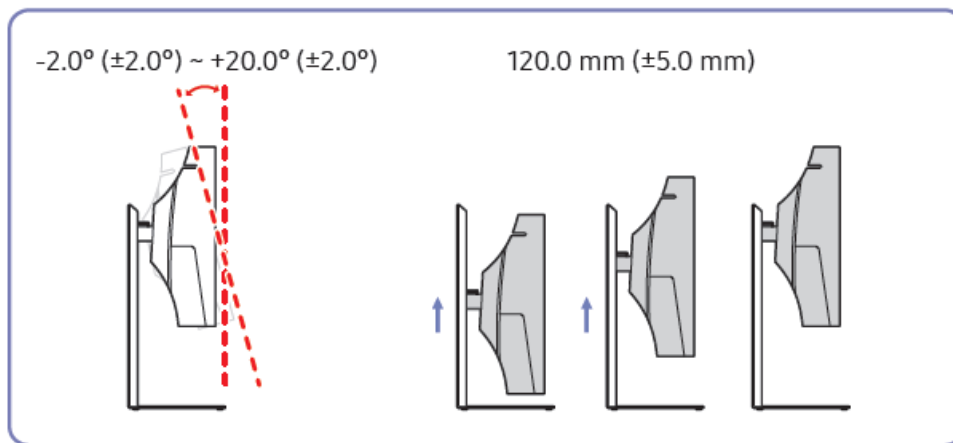
The color and shape of parts may differ from what is shown. Specifications are subject to change without notice to improve quality.

S32DG80*S

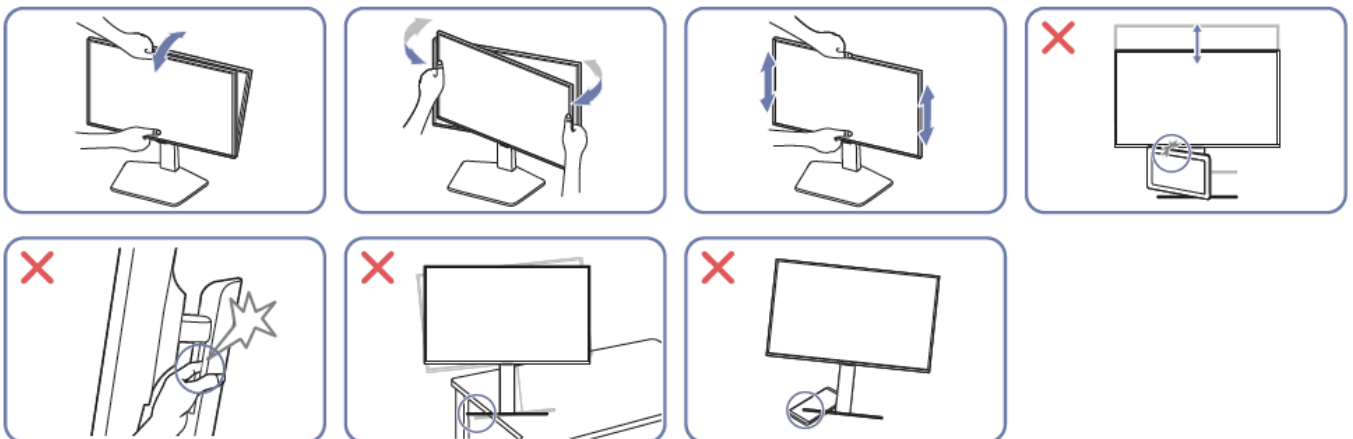


- The product tilt and height can be adjusted.
- When adjusting the tilt and height, hold both sides of the product and avoid using excessive force to prevent damage.
- When adjusting the stand height, you may hear a noise. This noise is generated because the ball inside the stand slides when the stand height is adjusted. It is a normal noise and not a product malfunction.
- When adjusting the left/right angles of the product, there may be a slight gap in the connection area of the stand base. This is normal and does not indicate a malfunction of the product.

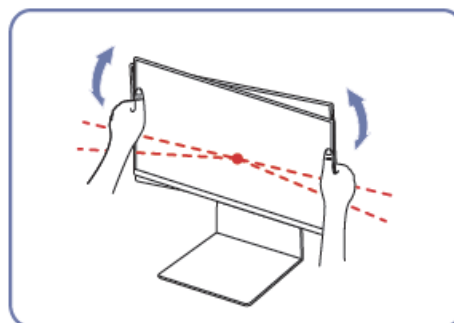
S34DG85*S



Caution: The Product shape may differ depending on the model.



- Grasp the left and right sides of the monitor and adjust the swivel.
- Grasp the center of the monitor and adjust the height.
- Do NOT hold the stand moving part with your hand when leveling the screen. Your hand may get hurt.
- When installing the product on a cabinet or shelf, make sure that the bottom edge of the front of the product is not protruding.
- Do not put an object around the lower part of the product. The product or object may get damaged when adjusting the product height.
- After adjusting the product tilt and height, if the screen is not level, take the following actions.

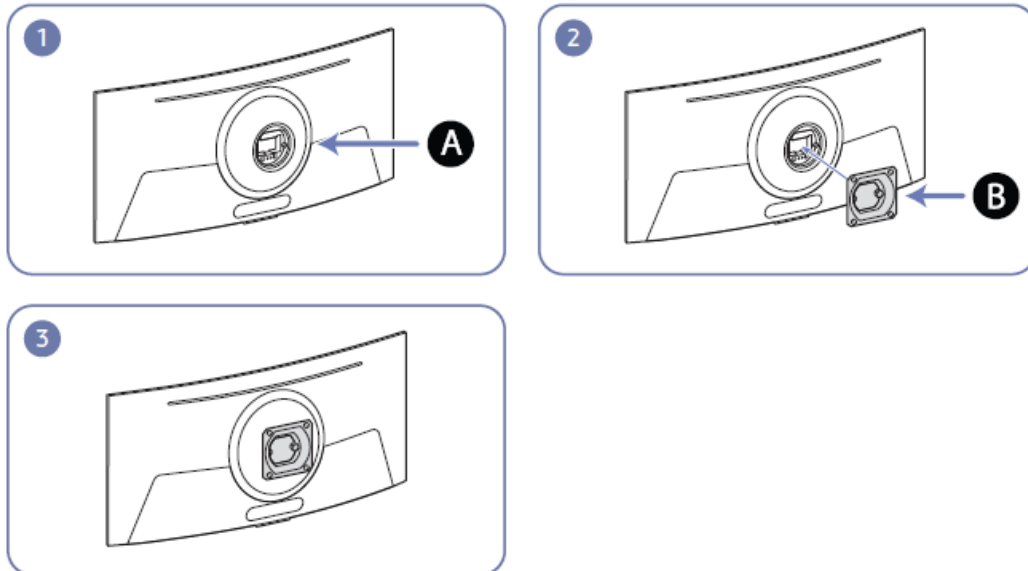


- Hold the bezel at both side edges and adjust the monitor angle until the screen becomes level. (Be careful not to directly hold the LCD.)

Attaching the BRACKET WALL

- The bracket may not be supplied, depending on the country and region.

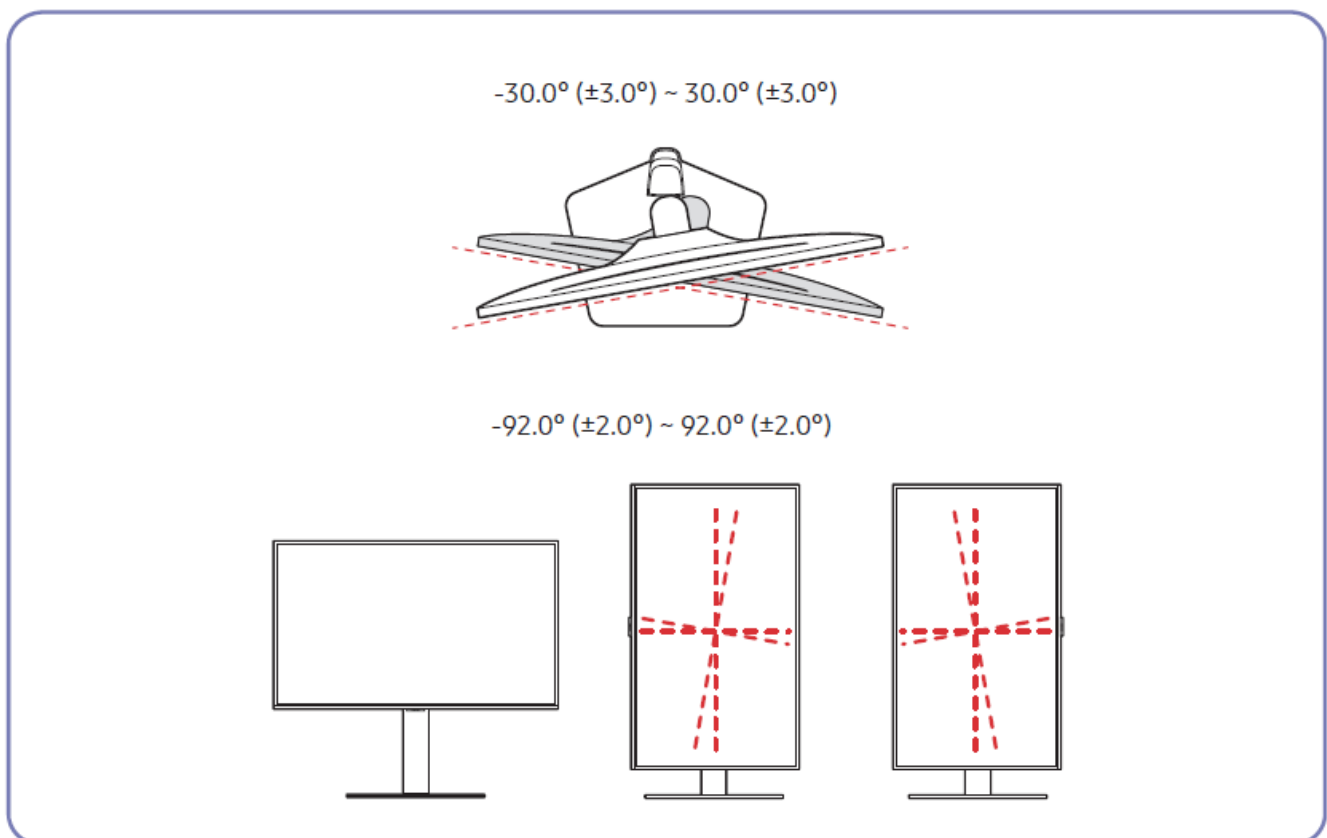
- Power the product off and remove the power cable from the power socket.



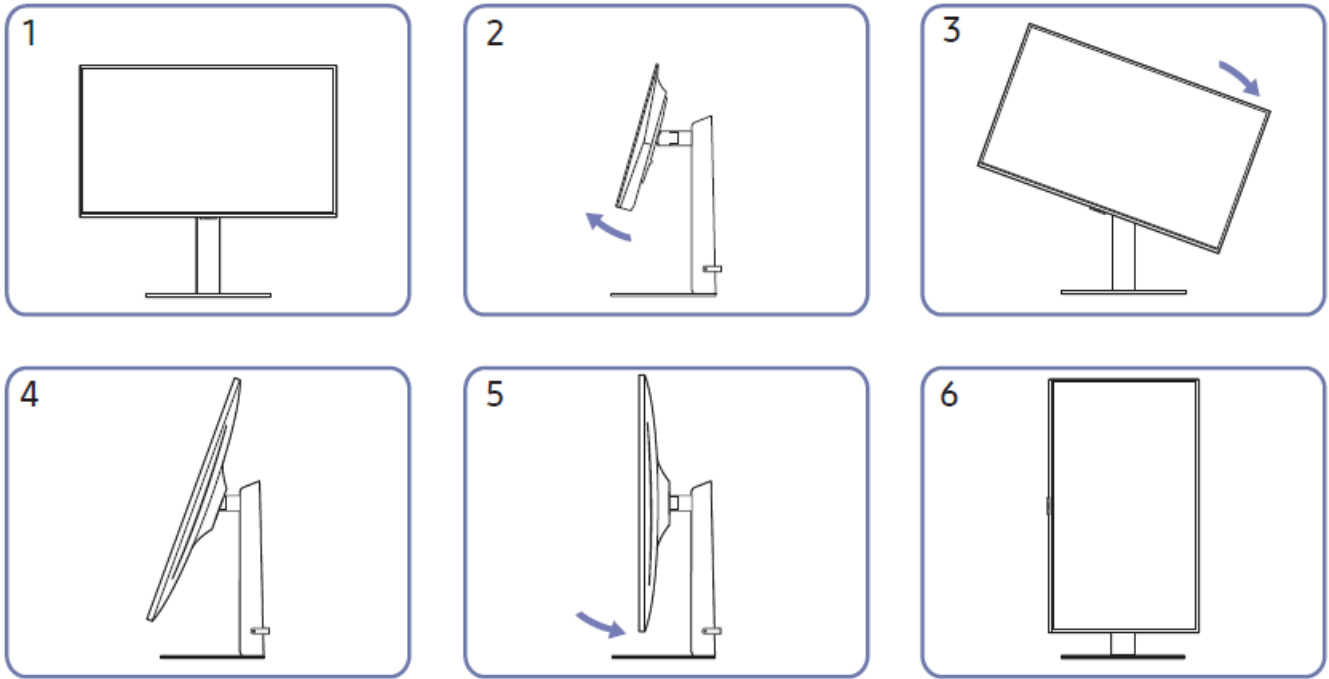
- **A** Attach the BRACKET WALL here
- **B** BRACKET WALL
- Align **B** with **A** on the monitor, and tightly fasten the screws on **B**.

Rotating the Product

- The color and shape of parts may differ from what is shown. Specifications are subject to change without notice to improve quality.
- S32DG80*S model only.



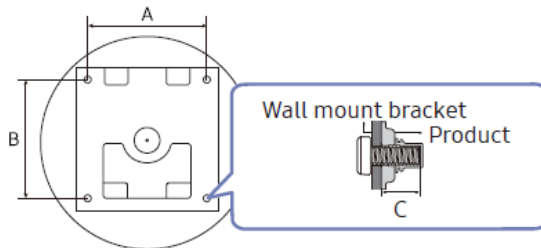
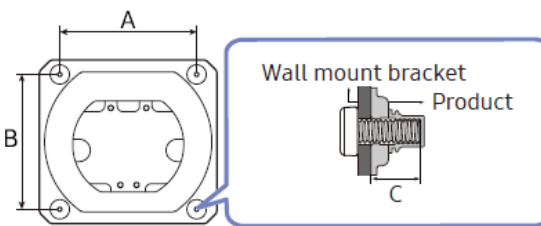
You can rotate your product as shown below.



- Be sure to fully extend the stand before rotating the product.
- If you rotate the product without fully extending the stand, the corner of the product may hit the floor and get damaged.
- When rotating the product, be careful not to damage the product by hitting the object or stand.

Wall Mount Kit Specifications (VESA)

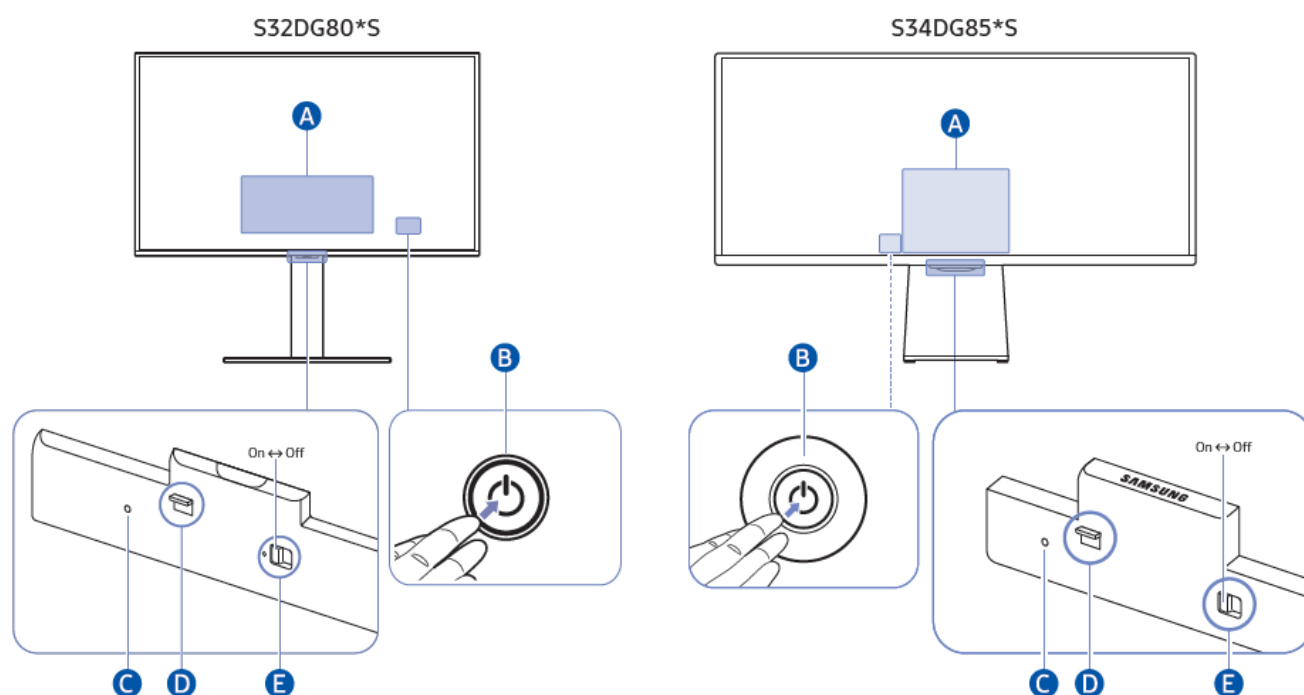
- Install your wall mount on a solid wall perpendicular to the floor. Before attaching the wall mount to surfaces other than the plaster board, please contact your nearest dealer for additional information.
- If you install the product on a slanted wall, it may fall and result in severe personal injury. Samsung wall mount kits contain a detailed installation manual and all parts necessary for assembly are provided.
- Do not use screws that are longer than the standard length or do not comply with the VESA standard screw specifications. Screws that are too long may cause damage to the inside of the product.
- For wall mounts that do not comply with the VESA standard screw specifications, the length of the screws may differ depending on the wall mount specifications.
- Do not fasten the screws too firmly. This may damage the product or cause the product to fall, leading to personal injury. Samsung is not liable for these kinds of accidents.
- Samsung is not liable for product damage or personal injury when a non-VESA or non-specified wall mount is used or the consumer fails to follow the product installation instructions.
- Do not mount the product at more than a 15-degree tilt.
- Standard dimensions for wall mount kits are shown in the table below.

Model name	VESA screw hole specs (A * B) in millimetres	C	Standard Screw	Quantity	
S32DG80*S	100.0 x 100.0	7.5 ~ 10.5 mm	M4	4	
Model name	VESA screw hole specs (A * B) in millimetres	C	Standard Screw	Quantity	
S34DG85*S	100.0 x 100.0	3.5 ~ 5.5 mm	M4	4	



Do not install your Wall Mount Kit while your product is turned on. It may result in personal injury due to electric shock.

Control Panel

You can turn on the product with the Power button, and then use the Control menu. The Control menu appears when the Power button is pressed while the product is On.



• A. Control menu

-  Home
-  Settings



- Return



- Source



- Power off

- **B. Power button / Controller button**



- **Press the button:** Display the Control menu. Select or run a focused item on the menu.



- **Press and hold the button:** The running function is terminated.
- This function may not be supported depending on the model.
- **Up/Down button:** Changes the channel.
- This function may not be supported depending on the model.
- **Left/Right button:** Changes the volume.
- This function may not be supported depending on the model.
- The buttons may work differently depending on the situation.

- **C. Microphone**

- **D. Power indicator / Remote control sensor**

- The LED turns on when the product is turned off.
- The LED blinks when the product enters the standby mode.
- When 60 seconds elapses with no signal, the product enters the standby mode. In standby mode, the screen turns on again when any signal is input or any button is pressed on the remote control.
- The color and shape of parts may differ from what is shown.
- The screen may dim if the protective film on the SAMSUNG logo or the bottom of the product is not detached. Please remove the protective film.
- When using the buttons (excluding Power) on the Samsung Smart Remote, the receiver LED does not blink.

- **E. Microphone switch**

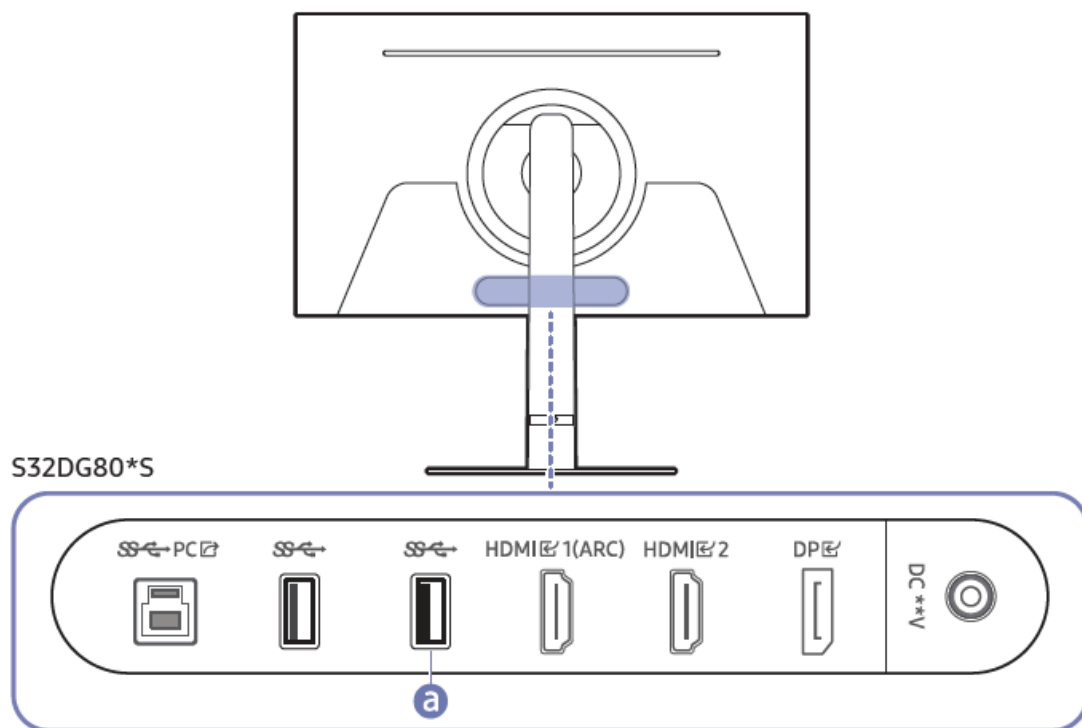
- You can turn on or off the microphone by using the switch at the bottom of the Product.
- If the microphone is turned off, All voice and sound features using the microphone are not available.
- The position and shape of the microphone switch may differ depending on the model.
- During analysis using data from the microphone, the data is not saved.

Connections

Using various connectors, you can also connect external devices.

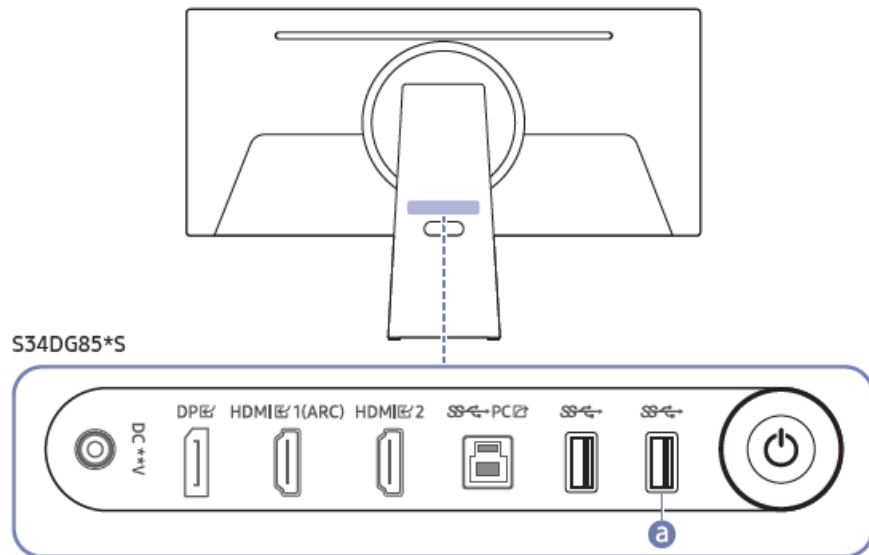
Ports

The functions available may vary depending on the product model. The color and shape of parts may differ from what is shown. Specifications are subject to change without notice to improve quality. Refer to the actual product.



Port	Description
SS-PC	Connects to a PC using a USB cable. ✎ This port can only connect to a PC.
SS	Connect to a USB device. ✎ To connect a wireless keyboard or mouse, connect the dongle to the a port.
HDMI 1(ARC) HDMI 2	Connects to a source device using an HDMI cable.
DP	Connects to a PC using a DP cable.
DC **V	Connects to the AC/DC adapter.

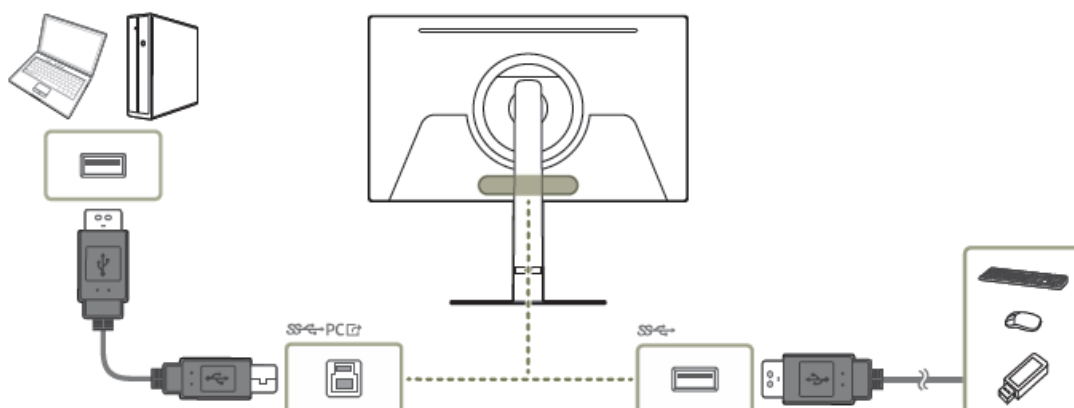
✎ For more information about connection to an external device, refer to [Home](#) > [Menu](#) (left directional button) > [Connected Devices](#) > [Connection Guide](#).



Port	Description
DC **V	Connects to the AC/DC adapter.
DPI	Connects to a PC using a DP cable.
HDMI 1(ARC) HDMI 2	Connects to a source device using an HDMI cable.
SS-PC	Connects to a PC using a USB cable. ✎ This port can only connect to a PC.
SS	Connect to a USB device. ✎ To connect a wireless keyboard or mouse, connect the dongle to the a port.

✎ For more information about connection to an external device, refer to > (left directional button) > **Connected Devices** > **Connection Guide**.

Connecting the Product to a PC as a USB HUB



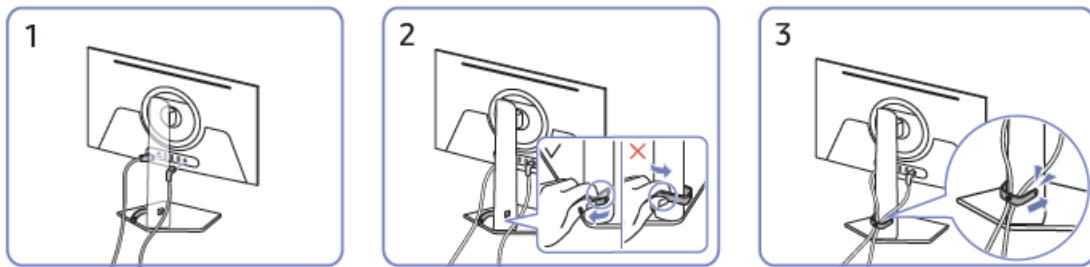
Using the product as a hub, connect and use various source devices with the product at a time.

- The Product shape may differ depending on the model.
- To detect and start a USB device (USB memory, Keyboard, Mouse, etc.) faster, connect the USB device to the

port on the product. The read/ write rate will be affected by the USB device and your PC.

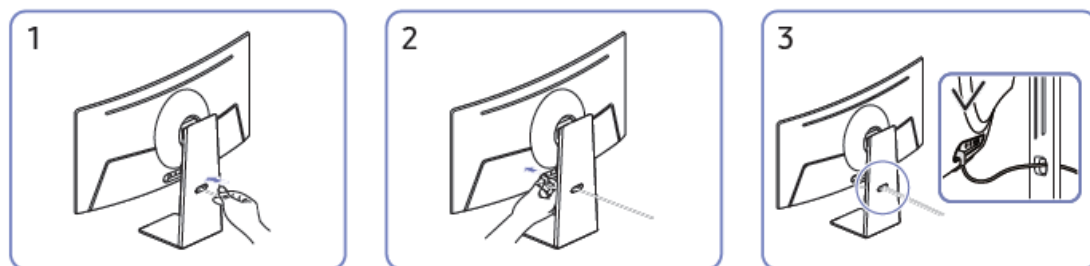
- For USB-related problems caused by OS, drive programs, or software, please contact relevant suppliers.
- With the launch of various USB devices on the market, we cannot guarantee that our products are matched with all USB devices.
- For an external mass-storage HDD requiring an external power supply, be sure to connect it to a power source.
- The company is not liable for problems or damages to an external device caused by using an unauthorized cable for the connection.
- Some products do not follow the USB standard, and it may cause a malfunction of the device.
- It is recommended that users use USB devices of 5V/1A or lower.

Tidying Up the Connected Cables S32DG80*S



1. Connect the corresponding cables.
2. Pull the right side of the HOLDER-STAND CABLE to remove from the stand. The left side of the cable can be damaged when pulled forcibly.
3. Put both cables in the cable holder on the stand (HOLDER-STAND CABLE) to organize the cables, as shown in the figure. The assembly is complete.

S34DG85*S



1. Pass cables through the hole in the stand.
2. Connect the cables to the corresponding ports.
3. Organise cables by passing them through the hole on the stand, as shown in the figures.

Precautions and Notes

You can get instructions and information that you must read after installation.

Read After Installing the product

- Read this information after installing the product.

Picture sizes and input signals

- The Picture Size is applied to the current source. The applied Picture Size will remain in effect whenever you select that source unless you change it.

Input signal	Picture size	Series	
		G80SD	G85SD
HDMI, DisplayPort (720p)	16:9	O	–
HDMI, DisplayPort (1080p)	16:9, 21:9	O	–
HDMI (3440 x 1440 @ 60 Hz), DisplayPort (3440 x 1440 @ 60/120 Hz)	21:9 Standard, 16:9 Standard, 4:3	–	O
HDMI (3440 x 1440 @ 120 / 175 Hz) DisplayPort (3440 x 1440 @ 175 Hz)	21:9 Standard, 16:9 Standard, 4:3 in Game Mode	–	O
HDMI, DisplayPort (3840 x 2160p)	16:9	O	–
HDMI, DisplayPort (3840 x 1600p)	21:9	O	–
USB (720p)	16:9, 4:3	O	–
USB (3840 x 2160p @ 24/30 Hz)	16:9	O	–
USB (3840 x 2160p @ 60 Hz)	16:9	O	–

- The input ports for external devices may differ depending on the model and geographical area.
- Available Picture Size may differ depending on the external device.

Supported Resolutions for UHD Input Signals

Check the supported resolution for UHD input signals.

- Resolution:** 3840 x 2160p

If Input Signal Plus is set to Off

Frame rate (fps)	Color Depth / Chroma Sampling	RGB 4:4:4	YCbCr 4:4:4	YCbCr 4:2:2	YCbCr 4:2:0
60	8 bit	–	–	–	O

If Input Signal Plus is set to On

Frame rate (fps)	Color Depth / Chroma Sampling	RGB 4:4:4	YCbCr 4:4:4	YCbCr 4:2:2	YCbCr 4:2:0
60	8 bit	O	O	O	O
	10 bit	—	—	O	O

Read Before Connecting a Computer (Supported Resolutions)

Check the resolutions supported for PC input signals.

When you connect your product to a computer, set the computer's video card to one of the standard resolutions listed in the tables below or on the next pages. The product will automatically adjust to the resolution you choose. Note that the optimal and recommended resolutions are 3840 x 2160 at 240 Hz (G80SD series), and 3440 x 1440 at 120 Hz (G85SD series, when Game Mode is on.) Choosing a resolution not included in the tables can result in a blank screen or just the remote control sensor turning on. Refer to the user manual of your graphics card for compatible resolutions.

- G80SD series: With Input Signal Plus enabled, the optimal resolutions are 3840 x 2160 at 240 Hz. With Input Signal Plus disabled, the optimal resolution is 3840 x 2160 at 30 Hz.
- G85SD series: The native resolution is 3440 x 1440 at 60 Hz with the Input Signal Plus set to On/Off.
- If the resolution is set to an unsupported one, the "Mode Not Supported" message may appear or noise may occur on the screen. Make sure to set the resolution to a supported one.
- The input ports for external devices may differ depending on the model and geographical area.

VESA DMT

Resolution (Dots x lines)	Display format	Horizontal frequency (kHz)	Vertical frequency (Hz)	Clock frequency (MHz)	Polarity (horizontal/vertical)	Port	
						HDMI	DP
640 x 480	60 Hz	31.469	59.940	25.175	- / -	O	O
640 x 480	75 Hz	37.500	75.000	31.500	- / -	O	O
800 x 600	60 Hz	37.879	60.317	40.000	+ / +	O	O
800 x 600	72 Hz	48.077	72.188	50.000	+ / +	O	O
800 x 600	75 Hz	46.875	75.000	49.500	+ / +	O	O
1024 x 768	60 Hz	48.363	60.004	65.000	- / -	O	O
1024 x 768	70 Hz	56.476	70.069	75.000	- / -	O	O
1024 x 768	75 Hz	60.023	75.029	78.750	+ / +	O	O
1152 x 864	75 Hz	67.500	75.000	108.000	+ / +	O	O
1280 x 720	60 Hz	45.000	60.000	74.250	+ / +	O	O
1280 x 800	60 Hz	49.702	59.810	83.500	- / +	O	O
1280 x 1024	60 Hz	63.981	60.020	108.000	+ / +	O	O
1280 x 1024	75 Hz	79.976	75.025	135.000	+ / +	O	O
*1440 x 900	60 Hz	55.935	59.887	106.500	- / +	O	O
*1600 x 900	60 Hz	60.000	60.000	108.000	+ / +	O	O
*1680 x 1050	60 Hz	65.290	59.954	146.250	- / +	O	O
*1920 x 1080	60 Hz	67.500	60.000	148.500	+ / +	O	O

This input signal is supported only by the G80SD series.

VESA CVT

Resolution (Dots x lines)	Display format	Horizontal frequency (kHz)	Vertical frequency (Hz)	Clock frequency (MHz)	Polarity (horizontal/vertical)	Port	
						HDMI	DP
*1920 x 1080RB	240 Hz	291.587	239.989	606.500	+ / -	O	O
**1920 x 1080RB	175 Hz	205.529	175.000	427.500	+ / -	O	O
*2560 x 1080RB	240 Hz	291.544	239.954	793.000	+ / -	O	O
*2560 x 1440RB	60 Hz	88.787	59.951	241.500	+ / -	O	O
2560 x 1440RB	120 Hz	182.996	119.998	497.750	+ / -	O	O
*2560 x 1440RB	240 Hz	388.511	239.970	1056.750	+ / -	O	O
**2560 x 1440RB	175 Hz	274.170	175.000	745.700	+ / -	O	O
*3840 x 1600RB	60 Hz	98.750	59.994	395.000	+ / -	O	O
*3840 x 1600	120 Hz	205.924	119.932	1103.750	- / +	O	O
*3840 x 1600RB	240 Hz	431.750	239.994	1727.000	+ / -	O	O
*3840 x 2160RB	240 Hz	582.938	239.991	2331.750	+ / -	O	O

- This input signal is supported only by the G80SD series.
- This input signal is supported only by the G85SD series.

CVT Custom

This input signal is supported only by the G85SD series.

Resolution (Dots x lines)	Display format	Horizontal frequency (kHz)	Vertical frequency (Hz)	Clock frequency (MHz)	Polarity (horizontal / vertical)	Port	
						HDMI	DP
3440 x 1440	50 Hz	73.681	49.987	265.250	+ / -	O	O
3440 x 1440	60 Hz	97.014	59.959	349.250	+ / -	O	O
3440 x 1440	100 Hz	161.736	99.961	582.250	+ / -	O	-
3440 x 1440	120 Hz	194.097	120.000	698.750	+ / -	O	O
3440 x 1440	175 Hz	283.264	175.000	1019.750	+ / -	O	O

Supported Resolutions for Video Signals

Check the resolutions supported for video signals.

CTA-861

Resolution (Dots x lines)	Display format	Horizontal frequency (kHz)	Vertical frequency (Hz)	Clock frequency (MHz)	Polarity (horizontal / vertical)	Port	
						HDMI	DP
720 x 480	60 Hz	31.469	59.940	27.000	– / –	O	O
**720 x 576	50 Hz	31.250	50.000	27.000	– / –	O	O
**1280 x 720	50 Hz	37.500	50.000	74.250	+ / +	O	O
1280 x 720	60 Hz	45.000	60.000	74.250	+ / +	O	O
**1920 x 1080	50 Hz	56.250	50.000	148.500	+ / +	O	O
1920 x 1080	60 Hz	67.500	60.000	148.500	+ / +	O	O
1920 x 1080	120 Hz	135.000	120.000	297.000	+ / +	O	O
*2560 x 1080	60 Hz	66.000	60.000	198.000	+ / +	O	O
*2560 x 1080	120 Hz	150.000	120.000	495.000	+ / +	O	O
3840 x 2160	30 Hz	67.500	30.000	297.000	+ / +	O	O
**3840 x 2160	50 Hz	112.500	50.000	594.000	+ / +	O	O
3840 x 2160	60 Hz	135.000	60.000	594.000	+ / +	O	O
*3840 x 2160	120 Hz	270.000	120.000	1188.000	+ / +	O	O

- The input ports for external devices may differ depending on the model and geographical area.
- This input signal is supported only by G80SD series.
- This input signal is supported only by G85SD series.

List of graphic cards supporting HDR10

- HDR10 is accessible only on Windows 10 systems equipped with graphic cards that support Play Ready 3.0 Digital Rights
- Management (for protected HDR content). Use the graphic cards listed below for HDR10.
- NVIDIA GeForce 1000 series or higher

- AMD Radeon™ RX 400 series or higher
- Intel UHD Graphics 600 series or higher
- Graphic cards that support hardware-accelerated 10-bit video decoding for HDR video codecs are recommended.

Specifications

General

Model Name		S32DG80*S	S34DG85*S
Size		32 Class (31.6 Inches / 80.3 cm)	34 Class (34.1 Inches / 86.8 cm)
Display area		699.48 mm (H) x 394.73 mm (V)	800.1 mm (H) x 337.1 mm (V)
Pixel Pitch		0.1814 mm (H) x 0.1814 mm (V)	0.2315 mm (H) x 0.2315 mm (V)
Maximum Pixel Frequency		2331.75 MHz	1019.75 MHz
Synchronization (PANEL Spec)	Horizontal Frequency	140.88 ~ 565.44 kHz	96.6 ~ 284.9 kHz
	Vertical Frequency	48 ~ 240 Hz	48 ~ 175 Hz
Resolution	Optimum Resolution	3840 x 2160 @ 240 Hz	3440 x 1440 @ 60 Hz (Game Mode off) 3440 x 1440 @ 120 Hz (Game Mode on)
	Maximum Resolution		3440 x 1440 @ 175 Hz (Game Mode on)
Power Supply		AC100-240V~ 50/60Hz Based on the AC voltage of the adapter. For the DC voltage of the product, refer to the product label.	
Signal connectors		HDMI, DisplayPort	
Environmental conditions		Operating Temperature: 0 °C to 40 °C (32 °F to 104 °F) Humidity: 10 % to 80 %, non-condensing	Operating Temperature: 10 °C to 40 °C (50 °F to 104 °F) Humidity: 10 % to 80 %, non-condensing
		Storage Temperature: -20 °C to 45 °C (-4 °F to 113 °F) Humidity: 5 % to 95 %, non-condensing	

Plug-and-Play

- This product can be installed and used with any Plug-and-Play compatible system.
- Two-way data exchange between the product and PC system optimizes the product settings.
- Product installation takes place automatically. However, you can customize the installation settings if desired.

Panel Dots (Pixels)

- Due to the nature of the manufacturing of this product, approximately 1 pixel per million (1ppm) may be brighter or darker on the LCD panel. This does not affect product performance.
- The specifications are subject to change without notice to improve quality.
- For detailed device specifications, visit the Samsung website.

(Europe only)

- To access energy labeling information about this product on the European Product Registry for Energy Labelling (EPREL), go to <https://eprel.ec.europa.eu/qr/> where is the product's EPREL registration number. You can find the registration number on the rating label of your product.

(Türkiye only)

To access the energy labeling information of the model:

1. Go to https://www.samsung.com/global/ecodesign_energy.
2. Get the model identifier from the energy label of the product and type it in the search box
3. Energy labeling information can be found

Appendix: Responsibility for the Pay Service (Cost to Customers)

When the service is requested, despite in warranty, we may charge you for a visit from a service technician in the following cases.

Not a product defect

- Cleaning of the product, Adjustment, Explanation, Re-installation, etc.
- If a service technician is requested to give instructions on how to use a product or simply adjust options without disassembling the product.
- If a defect is caused by external environmental factors (Internet, Antenna, Wired Signal, etc.)
- If a product is reinstalled or devices are connected additionally after installing the purchased product for the first time.
- If a product is reinstalled to move to a different spot or to move to a different house.
- If the customer requests instructions on how to use another company's product.
- If a customer requests instructions on how to use the network or another company's Programme.
- If a customer requests software installation and setup for the product.
- If a service technician removes/cleans dust or foreign materials inside of the product.
- If a customer requests an installation additionally after purchasing a product through home shopping or online.
- Product damage caused by customer's fault Product damage caused by customer's mishandling or wrong repair

If a product damage is caused by;

- External impact or drop.

- Use of supplies or separately sold products unspecified by Samsung.
- Repair from a person besides an engineer of an outsourcing service company or partner of Samsung Electronics Co., Ltd.
- Remodeling or repairing the product by the customer.
- Using it with incorrect voltage or non-authorized electrical connections.
- Not following the “cautions” in the Product Guide.

Others

- If the product fails because of a natural disaster. (lightning, fire, earthquake, flood damage, etc)
- If consumable components are all used up. (Battery, Toner, Fluorescent lights, Head, Vibrator, Lamp, Filter, Ribbon, etc.)
- If a customer requests a service in case the product has no defect, a service fee may be charged. So please read the Product Guide first.

FreeSync (for AMD graphics card)

- FreeSync technology is a solution that eliminates screen tearing without all the usual lag and latency.
- This feature will eliminate screen tearing and lag during gameplay. Improve your gaming experience.
- The displayed FreeSync menu items on the monitor may vary, depending on the monitor model and compatibility with the AMD graphics card.
 - **Off:** Disable FreeSync.
 - **On:** Turn on the AMD graphics cards' FreeSync function. You may experience intermittent flickers when playing some games.
- Apply the optimum resolution when using FreeSync.
- The refresh rate setting method please refer to Q & A → How can I change the frequency?
- This menu is not available when Multi View is enabled.
- The FreeSync function is only enabled in HDMI or DisplayPort mode. Use the HDMI/DP cable provided by the manufacturer when using FreeSync.
- If the FreeSync function is in use and the text displayed on the PC screen looks blurry or corrupted, resolve the issue by changing the resolution of the PC screen to the recommended resolution.
- If you set the Input Signal Plus to OFF, the FreeSync Premium pro mode is disabled.

If you use the FreeSync function while playing a game, the following symptoms may occur:

- The screen may flicker depending on the type of graphics card, the game option settings, or the video being played. Try the following actions: decrease the game setting values, change the current FreeSync Premium pro mode to Off, or visit the AMD website to check your graphics driver's version and update it with the latest one.
- While you are using the FreeSync function, the screen may flicker due to variation of the output frequency from the graphics card.
- The response rate during the game may fluctuate depending on the resolution. A higher resolution generally decreases the response rate.
- The sound quality of the monitor may be degraded.
 - If you encounter any issues when using the function, contact the Samsung Service Centre.

- If you change the screen resolution while the function is On, the screen may intermittently blank out due to the graphic card. Set FreeSync Premium Pro to Off and change the resolution.
- The function is unavailable in the devices (e.g. AV devices) that have no AMD graphic card. If the function is applied, the screen may malfunction.

The models in the Graphics Cards list support FreeSync

FreeSync can only be used with specific AMD graphics card models. Refer to the following list for supported graphics cards: Make sure to install the latest official graphics drivers from AMD that support FreeSync.

- For additional AMD graphics card models that support the FreeSync feature, visit the official AMD website.
- Select FreeSync Premium pro Off if you are using a graphics card from a different manufacturer.
- When applying the FreeSync function via the HDMI cable, it may fail to work due to the bandwidth limitation of certain AMD graphics cards.
 - Radeon™ RX Vega series
 - Radeon™ RX 500 series
 - Radeon™ RX 400 series
 - Radeon™ R9/R7 300 series (excluding R9 370/X, R7 370/X, R7 265)
 - AMD Radeon™ 5500 Series
 - AMD Radeon™ 5700 Series
 - Radeon™ Pro Duo (2016 edition)
 - Radeon™ R9 Nano series
 - Radeon™ R9 Fury series
 - Radeon™ R9/R7 200 series (excluding R9 270/X, R9 280/X)
 - AMD Radeon™ 5600 Series
 - AMD Radeon™ RX 6000 Series

Adaptive-Sync (for NVIDIA graphics card)

- This function may not be supported depending on the model.
- Adaptive-Sync technology is a solution that eliminates screen tearing without all the usual lag and latency.
- This feature will eliminate screen tearing and lag during gameplay. Improve your gaming experience.
- The displayed Adaptive-Sync menu items on the monitor may vary, depending on the monitor model and compatibility with the NVIDIA graphics card.
 - **Off:** Disable Adaptive-Sync.
 - **On:** Turn on the NVIDIA graphics cards' Adaptive-Sync function. You may experience intermittent flickers when playing some games.
- Apply the optimum resolution when using Adaptive Sync.
- For the refresh rate setting method please refer to Q & A → How can I change the frequency?
 - This menu is not available when MultiView is enabled.
 - The Adaptive-Sync function is only enabled in HDMI or DisplayPort mode.
- Use the HDMI/DP cable provided by the manufacturer when using Adaptive-Sync.
 - If the Adaptive-Sync function is in use and the text displayed on the PC screen looks blurry or corrupted, resolve the issue by changing the resolution of the PC screen to the recommended resolution.

- If you set the Input Signal Plus to OFF, the Adaptive-Sync mode is disabled.

If you use the Adaptive-Sync function while playing a game, the following symptoms may occur:

- The screen may flicker depending on the type of graphics card, the game option settings, or the video being played. Try the following actions: decrease the game setting values, change the current Adaptive-Sync mode to Off, or visit the NVIDIA website to check your graphics driver's version and update it with the latest one.
- While you are using the Adaptive-Sync function, the screen may flicker due to variations of the output frequency from the graphics card.
- The response rate during the game may fluctuate depending on the resolution. A higher resolution generally decreases the response rate.
 - The sound quality of the monitor may be degraded.
 - If you encounter any issues when using the function, contact the Samsung Service Centre.
 - If you change the screen resolution while the function is On, the screen may intermittently blank out due to the graphic card. Set Adaptive-Sync to Off and change the resolution.
 - The function is unavailable in the devices (e.g. AV devices) that have no NVIDIA graphic card. If the function is applied, the screen may malfunction.

The models in the Graphics Cards list support Adaptive-Sync

- Adaptive-Sync can only be used with specific NVIDIA graphics card models. Refer to the following list of supported graphics cards:
- Make sure to install the latest official graphics drivers from NVIDIA that support Adaptive Sync.
- For additional NVIDIA graphics card models that support the Adaptive-Sync feature, visit the official NVIDIA website.
- Select Adaptive-Sync Off if you are using a graphics card from a different manufacturer.
- When applying the Adaptive-Sync function via the DisplayPort cable, it may fail to work due to the bandwidth limitation of certain NVIDIA graphics cards.
 - GeForce GTX 10 series
 - GeForce RTX 30 series
 - GeForce RTX 20 series
 - GeForce RTX 40 series

Supported Resolutions for FreeSync/Adaptive-Sync (VRR)

- Check the supported resolutions for the FreeSync/AdaptiveSync (VRR) signal.
- When Game Mode is set to On or Auto, the FreeSync/Adaptive-Sync (VRR) function is activated.
- FreeSync/Adaptive-Sync (VRR) is only available in select models.

VESA DMT

This input signal is supported only by the G80SD series.

Resolution (Dots x lines)	Display format	Horizontal frequency (kHz)	Vertical frequency (Hz)	Clock frequency (MHz)	Polarity (horizontal / vertical)	Port	
						HDMI	DP
1600 x 900	60 Hz	60.000	60.000	108.000	+ / +	O	O

VESA CVT

Resolution (Dots x lines)	Display format	Horizontal frequency (kHz)	Vertical frequency (Hz)	Clock frequency (MHz)	Polarity (horizontal / vertical)	Port	
						HDMI	DP
*2560 x 1440RB	60 Hz	88.787	59.951	241.500	+ / -	O	O
*3840 x 1600RB	60 Hz	98.750	59.994	395.000	+ / -	O	O
*3840 x 1600	120 Hz	205.924	119.932	1103.750	- / +	O	O
**1920 x 1080RB	175 Hz	205.529	174.918	427.500	+ / -	O	O
*1920 x 1080RB	240 Hz	291.587	239.989	606.500	+ / -	O	O
2560 x 1440RB	120 Hz	182.996	119.998	497.750	+ / -	O	O
**2560 x 1440RB	175 Hz	274.173	119.000	745.750	+ / -	O	O
*2560 x 1080RB	240 Hz	291.544	239.954	793.000	+ / -	O	O
*2560 x 1440RB	240 Hz	388.511	239.970	1056.750	+ / -	O	O
*3840 x 1600RB	240 Hz	431.750	239.994	1727.000	+ / -	O	O
*3840 x 2160RB	240 Hz	582.938	239.991	2331.750	+ / -	O	O

- This input signal is supported only by G80SD series.
- This input signal is supported only by G85SD series.

CTA-861

Resolution (Dots x lines)	Display format	Horizontal frequency (kHz)	Vertical frequency (Hz)	Clock frequency (MHz)	Polarity (horizontal / vertical)	Port	
						HDMI	DP
*1280 x 720	60 Hz	45.000	60.000	74.250	+ / +	O	O
*1920 x 1080	60 Hz	67.500	60.000	148.500	+ / +	O	O
**1920 x 1080	120 Hz	135.000	120.000	297.000	+ / -	O	O
*2560 x 1080	60 Hz	66.000	60.000	198.000	+ / +	O	O
*3840 x 2160	60 Hz	135.000	60.000	594.000	+ / +	O	O
*1920 x 1080	120 Hz	135.000	120.000	297.000	+ / +	O	O
*2560 x 1080	120 Hz	150.000	120.000	495.000	+ / +	O	O
*3840 x 2160	120 Hz	270.000	120.000	1188.000	+ / +	O	O


- This input signal is supported only by the G80SD series.
- This input signal is supported only by the G85SD series.

CVT Custom

This input signal is supported only by G85SD series.

Resolution (Dots x lines)	Display format	Horizontal frequency (kHz)	Vertical frequency (Hz)	Clock frequency (MHz)	Polarity (horizontal / vertical)	Port	
						HDMI	DP
3440 x 1440	120 Hz	194.097	120.000	698.750	+ / -	O	O
3440 x 1440	175 Hz	283.264	175.000	1019.750	+ / -	O	O

Documents / Resources

	<p>SAMSUNG S32DG80*S Series OLED Display And Smart [pdf] Instructions S32DG80 S Series OLED Display And Smart, S32DG80 S Series, OLED Display And Smart, Display And Smart, And Smart, Smart</p>
---	--

References

- [!\[\]\(694fcb4611893e9db5249daba48abfc1_img.jpg\) SAMSUNG](#)
- [User Manual](#)

[Manuals+](#), [Privacy Policy](#)

This website is an independent publication and is neither affiliated with nor endorsed by any of the trademark owners. The "Bluetooth®" word mark and logos are registered trademarks owned by Bluetooth SIG, Inc. The "Wi-Fi®" word mark and logos are registered trademarks owned by the Wi-Fi Alliance. Any use of these marks on this website does not imply any affiliation with or endorsement.