

SAMSUNG QB43C LCD Display



SAMSUNG QB43C LCD Display User Guide

[Home](#) » [Samsung](#) » SAMSUNG QB43C LCD Display User Guide 

Contents

- [1 SAMSUNG QB43C LCD Display](#)
- [2 Product Information](#)
- [3 Product Usage Instructions](#)
- [4 Parts](#)
- [5 Troubleshooting Guide](#)
- [6 Specifications](#)
- [7 Wall Mount Kit Specifications](#)
- [8 Documents / Resources](#)
 - [8.1 References](#)
- [9 Related Posts](#)

SAMSUNG

SAMSUNG QB43C LCD Display



Product Information

Specifications

- **Model Name:** QB43C / QB50C / QB55C / QB65C / QB75C / QB85C / QB55C-N / QB65C-N / QB75C-N / QB85C-N
- **Recommended Use:** Under 16 hours per day
- **Panel Sizes:**
 - **QB43C:** 43 CLASS (42.5 inches / 107.9 cm)
 - **QB50C:** 50 CLASS (49.5 inches / 125.7 cm)
 - **QB55C / QB55C-N:** 55 CLASS (54.6 inches / 138.7 cm)
 - **QB65C / QB65C-N:** 65 CLASS (64.5 inches / 163.9 cm)
 - **QB75C / QB75C-N:** 75 CLASS (74.5 inches / 189.3 cm)
 - **QB85C / QB85C-N:** 85 CLASS (84.6 inches / 214.9 cm)

Product Usage Instructions

Quick Setup Guide

1. Connect the necessary cables to the product and power it on.
2. Use the remote control to navigate and control the product functions.
3. Refer to the user manual for detailed instructions and troubleshooting.

Powering On and Off

To power on the product, press the power button located on the panel key. To power off, press the same button again.

Troubleshooting

- **Issue:** The screen keeps switching on and off.
- **Solution:** Check cable connections between the product and PC, ensuring they are secure and properly connected.
- **Issue:** No Signal is displayed on the screen.
- **Solution:** Ensure the source device connected to the product is powered on and check HDMI Hot Plug function settings.
- **Issue:** Not Optimum Mode is displayed.
- **Solution:** Adjust graphics card settings to match the product's maximum resolution and frequency as per specifications.

Frequently Asked Questions (FAQ)

- **Q: What should I do if components are missing?**

A: Contact the vendor from whom you purchased the product for support in case of missing components.

- **Q: How can I access the user manual for further details?**

A: Download the user manual from Samsung's official website at <http://www.samsung.com/displaysolutions> for comprehensive information.

Quick Setup Guide

- Recommended hours of use per day of this product is under 16 hours. If the product is used for longer than 16 hours a day, the warranty may be void.
- The color and the appearance may differ depending on the product, and the content in the manual is subject to change without prior notice to improve the performance.
- Download the user manual from the following Samsung Website for further details.
<http://www.samsung.com/displaysolutions>



The terms HDMI, HDMI High-Definition Multimedia Interface, HDMI trade dress and the HDMI Logos are trademarks or registered trademarks of HDMI Licensing Administrator, Inc.

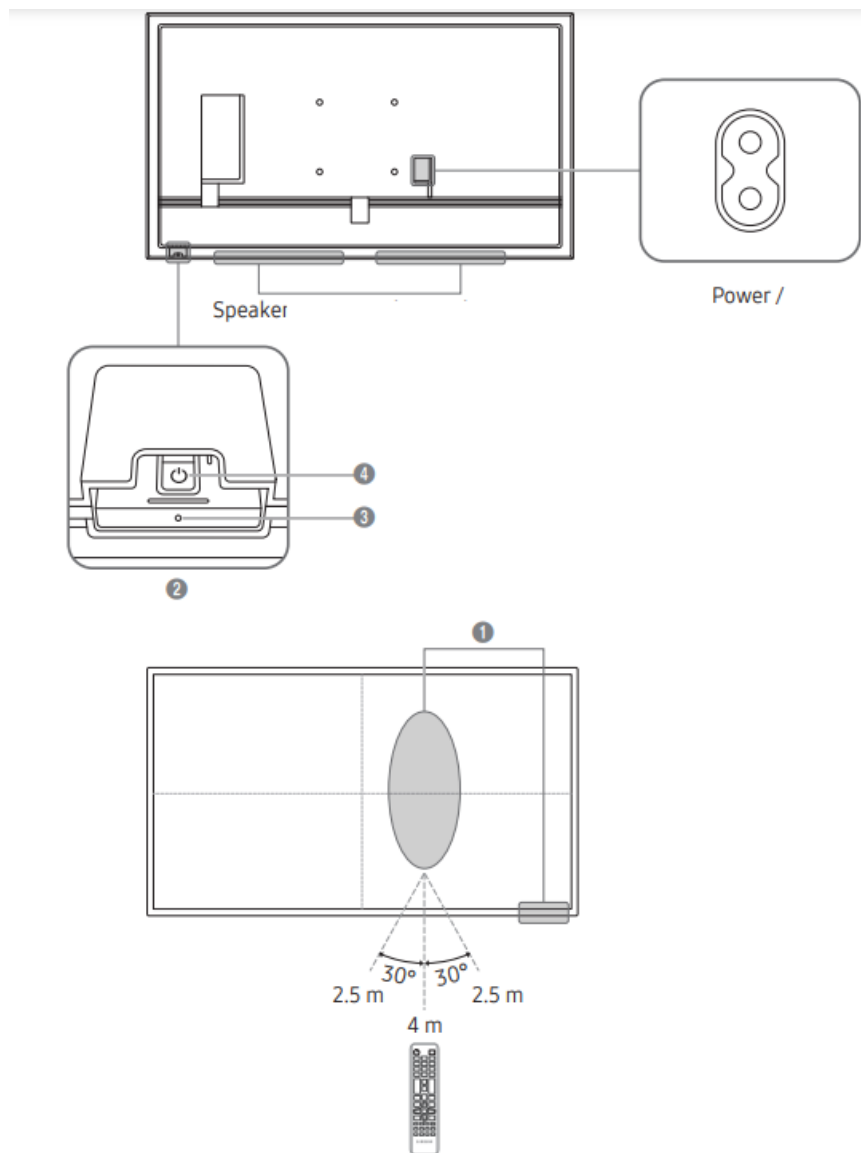
Checking the Components

Contact the vendor where you purchased the product if any components are missing. Components may not be supported depending on the model or geographical area.

Quick Setup Guide

- Regulatory guide
- Batteries (AAA x 2) (Not available in some locations)
- RS232C adapter
- Warranty card (Not available in some locations)
- Power cord
- Remote Control

Parts



1. Remote sensor

2. Press a button on the remote control pointing at the sensor on the front of the product to perform the corresponding function.

* Using other display devices in the same space as the remote control of this product can cause the other display devices to be inadvertently controlled.

3. Power indicator

4. Power button

Turns the product on or off.

Troubleshooting Guide

Issues	Solutions
The screen keeps switching on and off.	Check that the cable between the product and the PC is connected correctly.
No Signal is displayed on the screen.	Check that the product is connected correctly with a cable.
	Check that the source device connected to the product is powered on.
	Depending on the type of external device, the screen may not display properly. In this case, connect it with the HDMI Hot Plug function turned On .
Not Optimum Mode is displayed.	This message is displayed when a signal from the graphics card exceeds the product's maximum resolution and frequency.
	Refer to the Standard Signal Mode Table and set the maximum resolution and frequency according to the product specifications.

Contact **SAMSUNG WORLD WIDE**

Website: <http://www.samsung.com>

Country/Area	Customer Care Center
U.S.A	1-800-SAMSUNG (726-7864)
CANADA	1-800-SAMSUNG (726-7864)
ARGENTINA	0800-555-SAMS (7267)
BOLIVIA	800 107 260
BRAZIL	0800 555 0000 (Demais cidades e regiões) 4004-0000 (Capitais e grandes centros)
CHILE	800 726 786
COLOMBIA	Bogotá en el 600 12 72 Sin costo en todo el país 01 8000 112 112 Y desde tu celular #726
COSTA RICA	00-800-1-SAMSUNG (726-7864)
DOMINICAN REPUBLIC	1-800-751-2676
ECUADOR	1-800-SAMSUN (72-6786)
EL SALVADOR	8000-SAMSUNG (726-7864)
GUATEMALA	1-800-299-0033
HONDURAS	800-2791-9111

Country/Area	Customer Care Center
JAMAICA	1-800-SAMSUNG (726-7864)
MEXICO	800-SAMSUNG
NICARAGUA	001-800-5077267
PANAMA	800-0101
PARAGUAY	0800-11-SAMS (7267)
PERU	080077708 Desde teléfonos fijos, públicos o celulares
PUERTO RICO	1-800-682-3180
TRINIDAD & TOBAGO	1-800-SAMSUNG (726-7864)
URUGUAY	0800-SAMS (7267)
VENEZUELA	0-800-100-5303

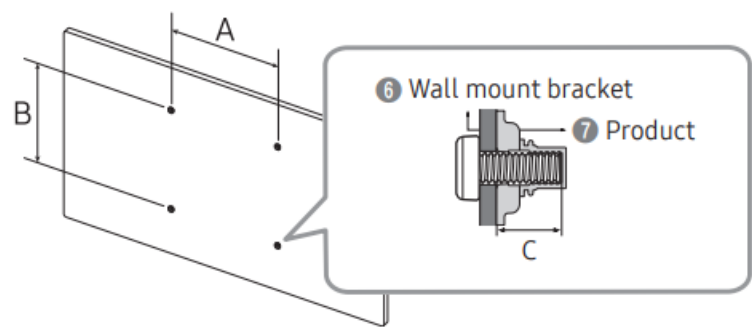
Specifications

Model Name		QB43C	QB50C
Panel	Size	43 CLASS (42.5 inches / 107.9 cm)	50 CLASS (49.5 inches / 125.7 cm)
	Display area	941.184 mm (H) x 529.416 mm (V)	1095.84 mm (H) x 616.41 mm (V)
Model Name		QB55C / QB55C-N	QB65C / QB65C-N
Panel	Size	55 CLASS (54.6 inches / 138.7 cm)	65 CLASS (64.5 inches / 163.9 cm)
	Display area	1209.6 mm (H) x 680.4 mm (V)	1428.48 mm (H) x 803.52 mm (V)
Model Name		QB75C / QB75C-N	QB85C / QB85C-N
Panel	Size	75 CLASS (74.5 inches / 189.3 cm)	85 CLASS (84.5 inches / 214.7 cm)
	Display area	1650.24 mm (H) x 928.26 mm (V)	1872.0 mm (H) x 1053.0 mm (V)
Power Supply		AC100-240V~ 50/60Hz Refer to the label at the back of the product as the standard voltage can vary in different countries.	
Environmental considerations	Operating	Temperature: 32 °F to 104 °F (0 °C to 40 °C) Humidity: 10% to 80%, non-condensing	
	Storage	Temperature: -4 °F to 113 °F (-20 °C to 45 °C) Humidity: 5% to 95%, non-condensing	

- To connect a LAN cable, use a CAT 7 (*STP type) cable for the connection. (10/100 Mbps)
- Shielded Twisted Pair
- This is a class A product. In a domestic environment this product may cause radio interference in which case the user may be required to take adequate measures. (Supported model: QB85C, QB85C-N)
- This device is a Class B digital apparatus. (Supported models: QB43C, QB50C, QB55C, QB55C-N, QB65C, QB65C-N, QB75C, QB75C-N)

- For detailed device specifications, visit the Samsung website.

Wall Mount Kit Specifications



1 Model Name	QB43C	QB50C / QB55C / QB55C-N	QB65C / QB65C-N	QB75C / QB75C-N	QB85C / QB85C-N
2 VESA screw hole specs (A * B) in millimeters	200 x 200		400 x 300	400 x 400	600 x 400
3 C	12 – 14 mm (1.2 – 1.4 cm)				
4 Standard Screw	M8				
5 Quantity	4				

Documents / Resources

	SAMSUNG QB43C LCD Display [pdf] User Guide QB43C LCD Display, QB43C, LCD Display, Display
--	--

References

- [User Manual](#)

Manuals+. Privacy Policy

This website is an independent publication and is neither affiliated with nor endorsed by any of the trademark owners. The "Bluetooth®" word mark and logos are registered trademarks owned by Bluetooth SIG, Inc. The "Wi-Fi®" word mark and logos are registered trademarks owned by the Wi-Fi Alliance. Any use of these marks on this website does not imply any affiliation with or endorsement.