

SAMSUNG
QA48S90DAEXZW OLED
AI Smart Display



SAMSUNG QA48S90DAEXZW OLED AI Smart Display Installation Guide

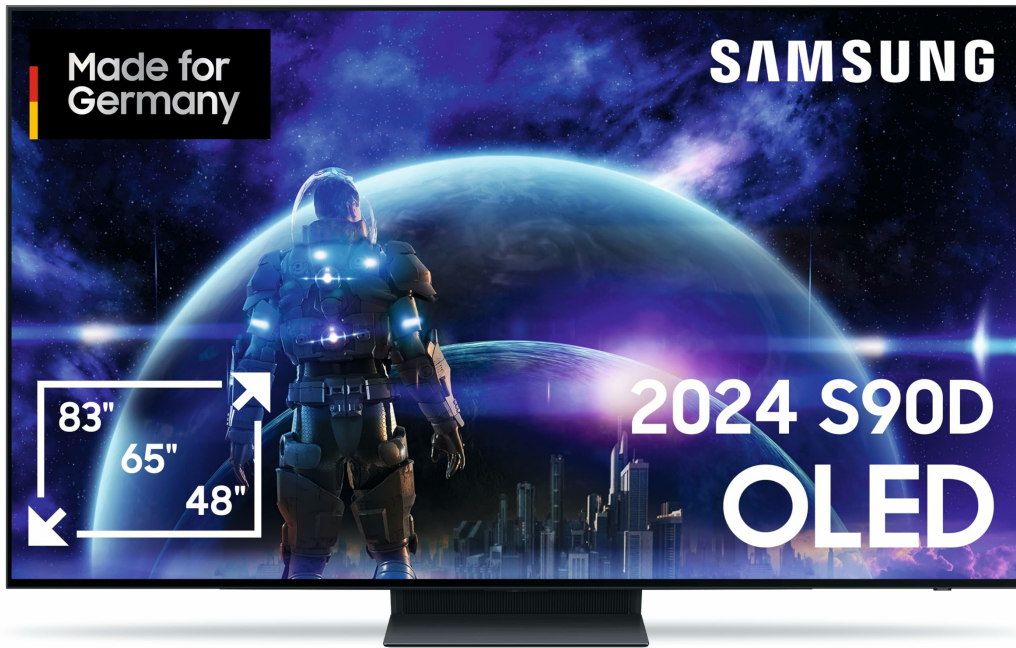
[Home](#) » [Samsung](#) » SAMSUNG QA48S90DAEXZW OLED AI Smart Display Installation Guide 

Contents

- [1 SAMSUNG QA48S90DAEXZW OLED AI Smart Display](#)
- [2 Specifications](#)
- [3 Installation Steps](#)
- [4 FAQ](#)
- [5 Documents / Resources](#)
 - [5.1 References](#)

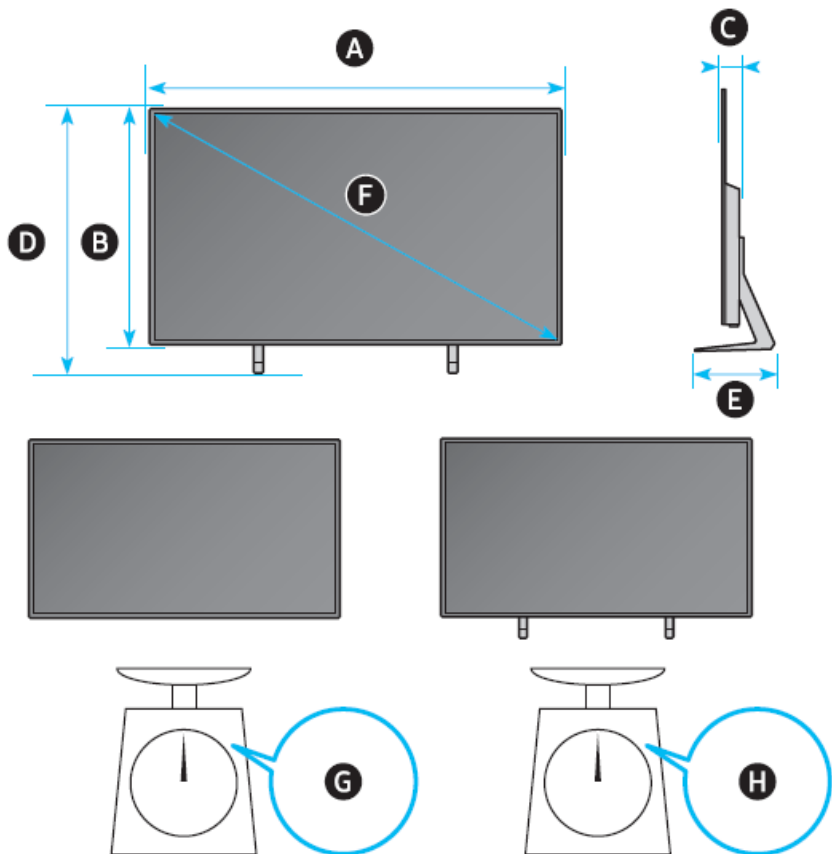
SAMSUNG

SAMSUNG QA48S90DAEXZW OLED AI Smart Display



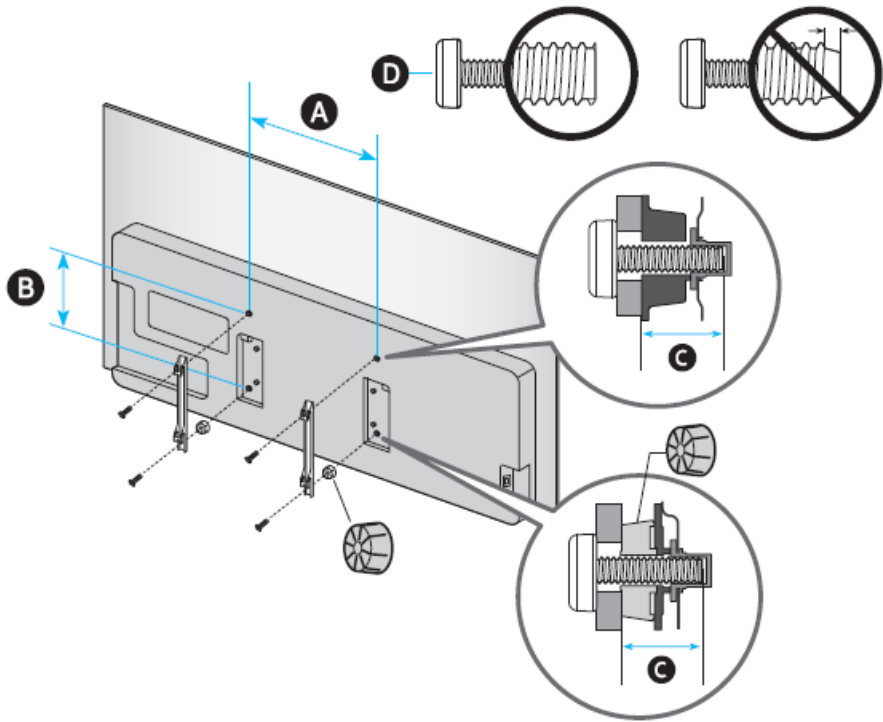
Specifications

Model	A	B	C	D	E	F	G	H
QA48S90DAEXZW	1069.3	619.9	39.6	682.6	209.5	120	12.3	13.2



VESA Mounting Specifications

Model	A x B	C	D
QA48S90DAEXZW	300 x 200	28-30	M8



Installation Steps

USB

HDD

ARC

USB ⚡ (5V 0.5A)

USB ⚡ (HDD 5V 1A)

HDMI 4

3 (eARC)

HDMI 2

HDMI 1

LAN

SERVICE

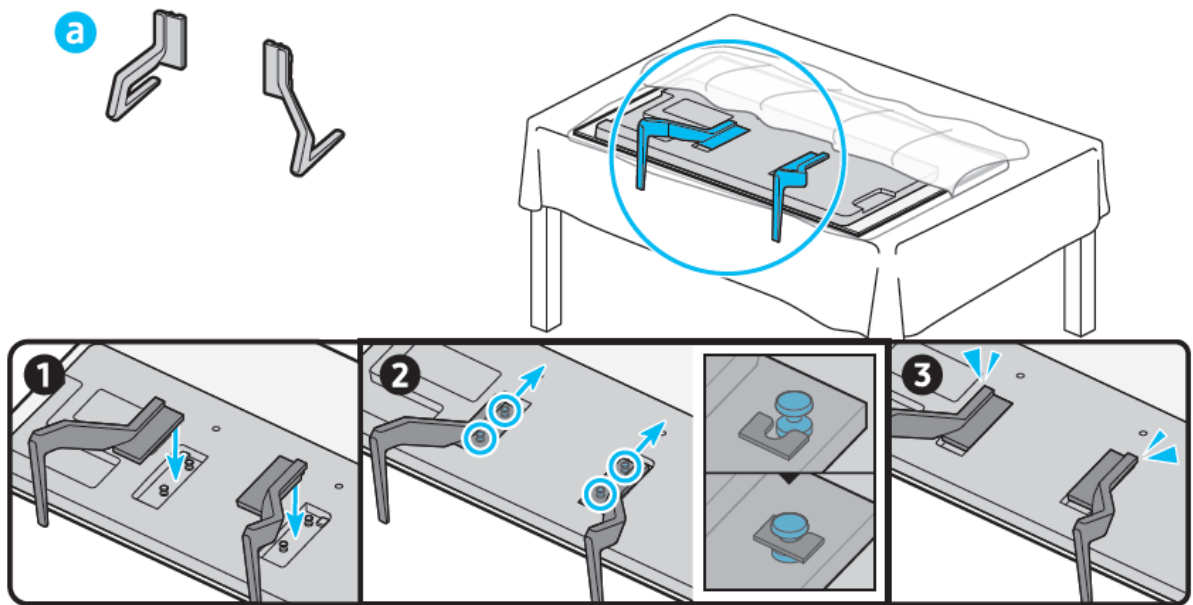
光纖

服務連接埠

a

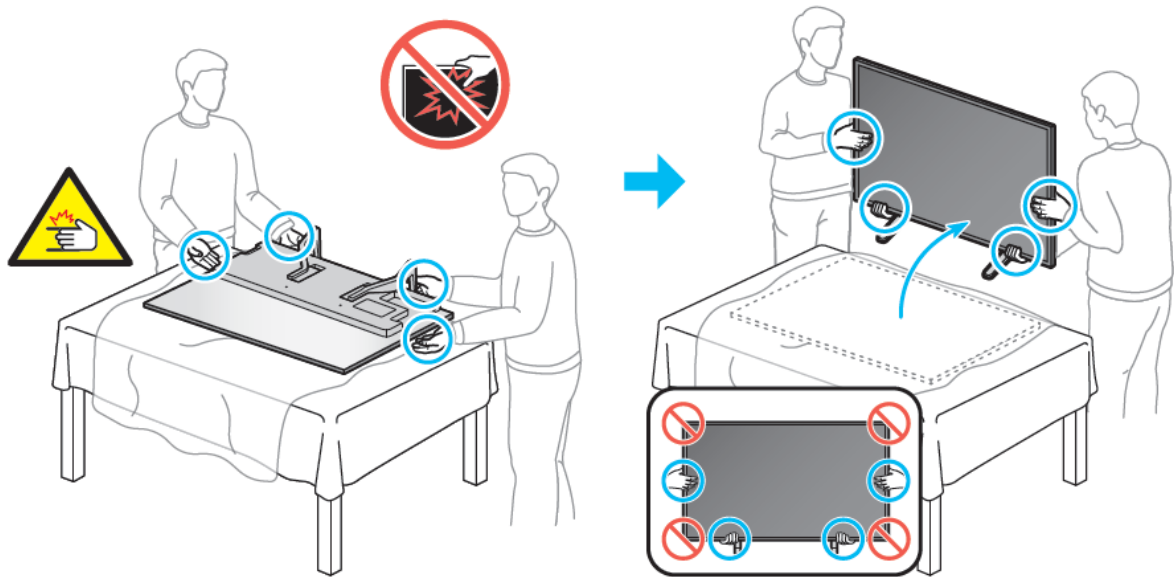
Step 1: Unpacking

- Do not lay the TV flat on the ground.
- Carefully lift the TV from the box with two people.



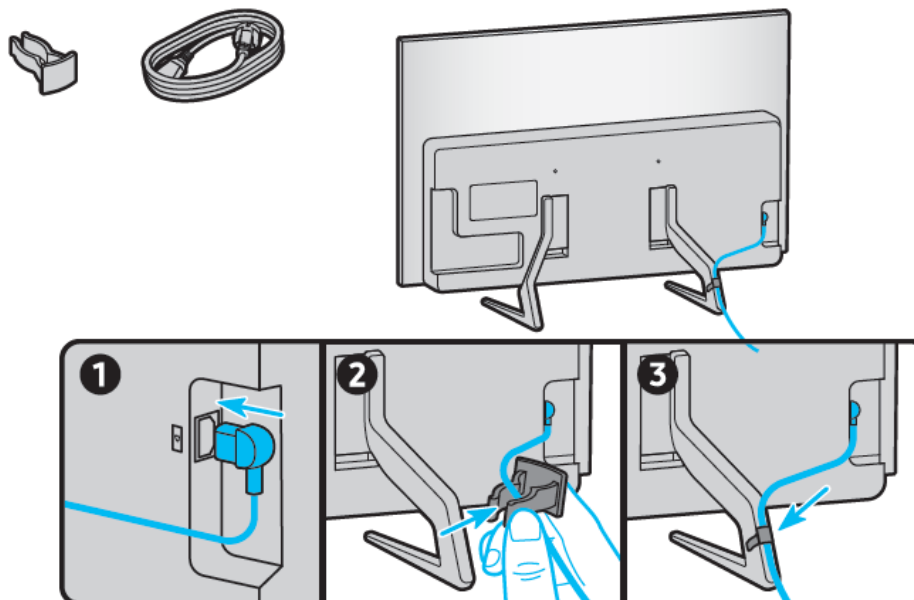
Step 4: Lifting the TV

- With two people, lift the TV upright.
- Avoid holding the screen directly.



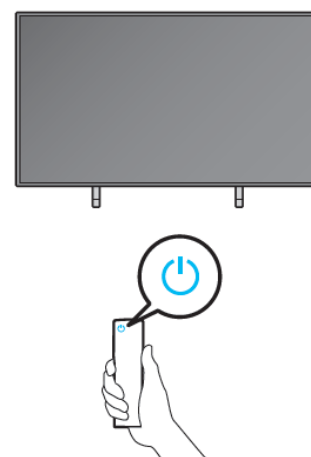
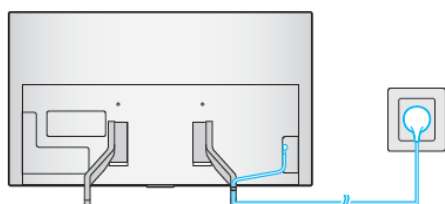
Step 5: Connecting Cables

- Connect power and other necessary cables.



Step 6: Power On

- Plug in the TV and press the power button.



FAQ

What should I do if the TV screen is damaged during installation?

Contact Samsung support for assistance and do not attempt to repair it yourself.

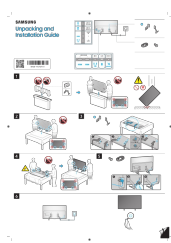
Can I install the TV by myself?

It is recommended to have two people for safe installation.

What tools are needed for installation?

A screwdriver is required to attach the stand.

Documents / Resources



[SAMSUNG QA48S90DAEXZW OLED AI Smart Display](#) [pdf] Installation Guide
QA48S90DAEXZW, QA48S90DAEXZW OLED AI Smart Display, OLED AI Smart Display, Smart Display, Display

References

- [User Manual](#)

[Manuals+](#), [Privacy Policy](#)

This website is an independent publication and is neither affiliated with nor endorsed by any of the trademark owners. The "Bluetooth®" word mark and logos are registered trademarks owned by Bluetooth SIG, Inc. The "Wi-Fi®" word mark and logos are registered trademarks owned by the Wi-Fi Alliance. Any use of these marks on this website does not imply any affiliation with or endorsement.