




## SAMSUNG OH24B 24 LED-Backlit LCD Display User Guide

[Home](#) » [Samsung](#) » SAMSUNG OH24B 24 LED-Backlit LCD Display User Guide 

### Contents

- [1 SAMSUNG OH24B 24 LED-Backlit LCD Display](#)
- [2 Product Information](#)
- [3 Product Usage Instructions](#)
- [4 Checking the Components](#)
- [5 Reverse Side](#)
- [6 Connecting and Using a Source Device](#)
- [7 Troubleshooting Guide](#)
- [8 Specification](#)
- [9 Installing the product](#)
- [10 Documents / Resources](#)
  - [10.1 References](#)
- [11 Related Posts](#)



**SAMSUNG OH24B 24 LED-Backlit LCD Display**



## Product Information

The OH24B is a display product manufactured by Samsung. Please note that the color and appearance of the product may vary and the content in the manual is subject to change without prior notice to improve performance. For further details, you can download the user manual from the official Samsung website:

<http://www.samsung.com/displaysolutions>. The terms HDMI and HDMI High-Definition Multimedia Interface, as well as the HDMI Logo, are trademarks or registered trademarks of HDMI Licensing Administrator, Inc. in the United States and other countries.

## Product Usage Instructions

### Checking the Components

Contact the vendor from whom you purchased the product if any components are missing. Please note that components may differ depending on the location.

#### Components

1. Wired LAN connection port: Used to connect an external device such as a laptop to the internet. Connects to MDC and the internet using a LAN cable (10/100 Mbps).
2. RS232C cable connection: Connects to MDC using an RS232C cable.
3. Audio output: Outputs sound to an audio device via an audio cable.
4. HDMI connection: Connects to a source device using an HDMI cable or HDMI-DVI cable.
5. USB memory device connection: Connects to a USB memory device.
6. WiFi&BT module and USB 2.0: Dedicated for the WiFi&BT module and USB 2.0 (USB memory device) only. Please note that it is not compatible with USB 3.0.

### Connecting and Using a Source Device

Use Cat7 (\*STP Type) cable for the connection (10/100 Mbps). Make sure to use a shielded twist pair.

### Troubleshooting Guide

If you encounter any issues, refer to the following solutions:

- **The screen keeps switching on and off:** Check the cable connection between the product and PC, and ensure the connection is secure. Also, check that the product is connected correctly.
- **No Signal is displayed on the screen:** Check that the device connected to the product is powered on.
- **Not Optimum Mode is displayed:** This message is displayed when a signal from the graphics card exceeds the product's maximum resolution and frequency. Refer to the Supported Preset Timing Modes Table and set the maximum resolution and frequency according to the product specifications.
- **The images on the screen look distorted:** Check the cable connection to the product.
- **The screen is not clear or blurry:** Set the resolution and frequency to the recommended level.
- **The screen appears unstable and shaky:** Check that the resolution and frequency of the PC and graphics card are set within a range compatible with the product. Change the screen settings if required by referring to the Additional Information on the product menu and the Standard Signal Mode Table.
- **The remote control does not work:** Check if the batteries are flat. Also, check for power failure and ensure that the power cord is connected. Additionally, check for any special lighting or neon signs switched on in the vicinity.

## Specifications

**Model Name:** OH24B

**Panel Size Display Area:** [Display area information not provided in the user manual]

- The color and the appearance may differ depending on the product, and the content in the manual is subject to change without prior notice to improve the performance.
- Download the user manual from the following Samsung Website for further details.

<http://www.samsung.com/displaysolutions>

The terms HDMI and HDMI High-Definition Multimedia Interface, and the HDMI Logo are trademarks or registered trademarks of HDMI Licensing Administrator, Inc. in the United States and other countries.

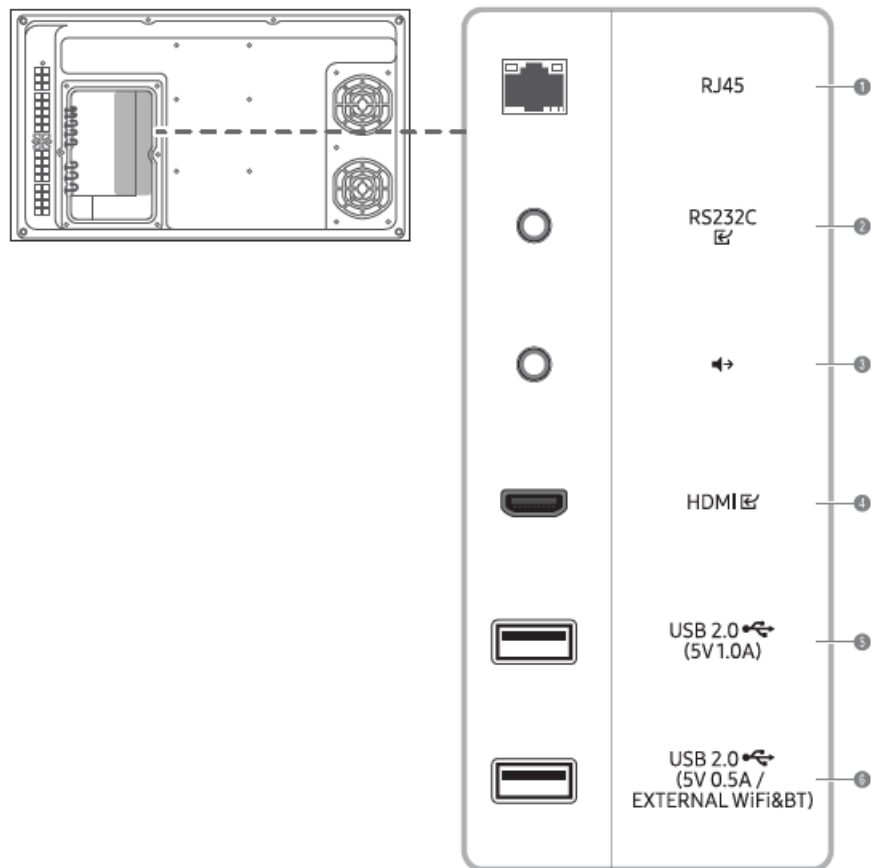
## Checking the Components

Contact the vendor where you purchased the product if any components are missing. Components may differ in different locations.

## Components

- QUICK SETUP GUIDE
- Regulatory guide
- Batteries (AAA x 2) (Not available in some locations)
- EXTERNAL WiFi&BT module accessory
- Warranty card (Not available in some locations)
- Power cord
- Remote Control

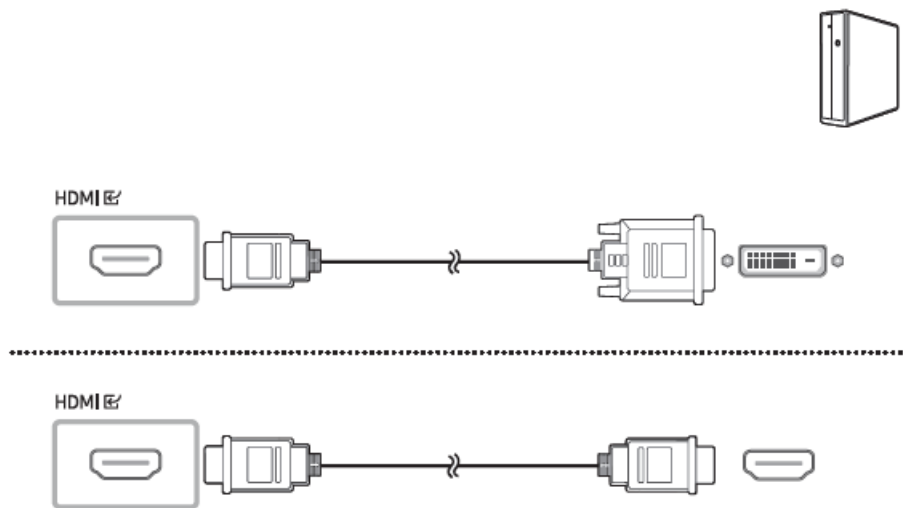
## Reverse Side



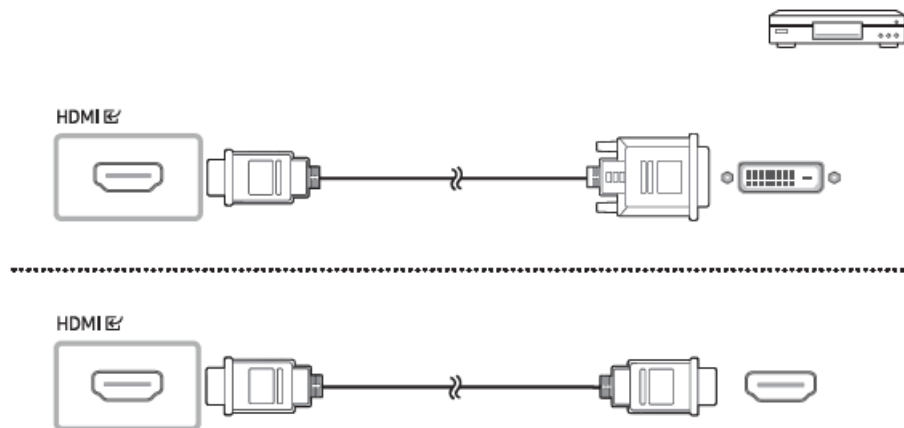
1. Wired LAN connection port used to connect an external device such as a laptop to connect to the Internet.
  - Connects to MDC and the Internet using a LAN cable. (10/100 Mbps)
2. Connects to MDC using an RS232C cable.
3. Outputs sound to an audio device via an audio cable.
4. Connects to a source device using a HDMI cable or HDMI-DVI cable.
5. Connect to a USB memory device.
6. Connect to a USB memory device.
  - Dedicated for the WiFi&BT module and USB 2.0 (USB memory device) only.
  - It is not compatible with USB 3.0.

## Connecting and Using a Source Device

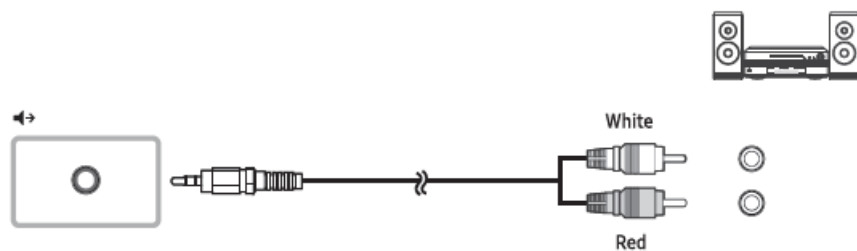
### Connecting to a P



## Connecting to a Video Device



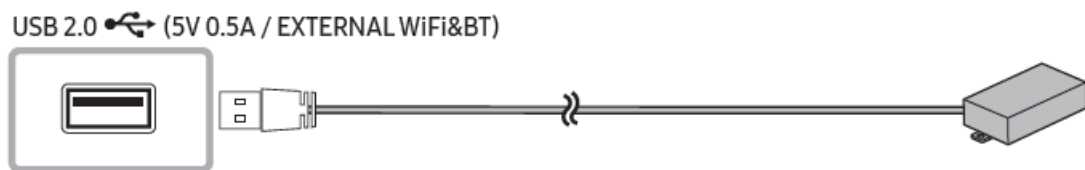
## Connecting to an Audio System



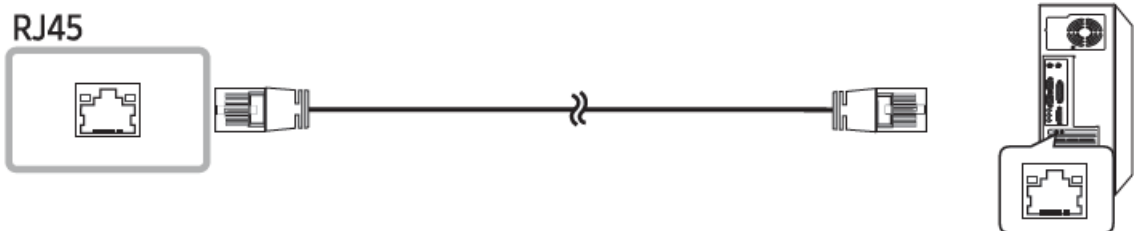
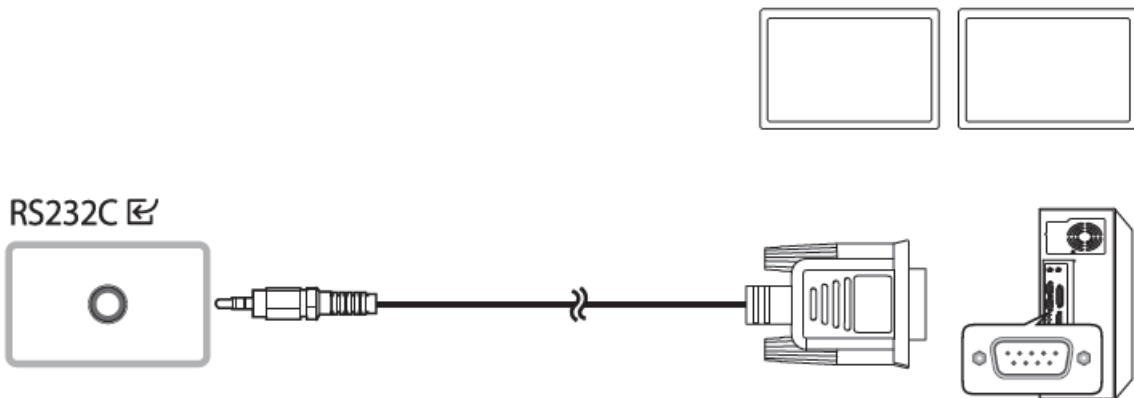
## Connecting the LAN Cable



Use Cat7(\*STP Type) cable for the connection. (10/100 Mbps)  
 \*Shielded Twist Pair



## Connecting to MDC



For details on how to use the MDC program, refer to Help after installing the program. The MDC program is available on the website.

<http://www.samsung.com/displaysolutions>

## Troubleshooting Guide

Issues	Solutions
The screen keeps switching on and off.	Check the cable connection between the product and PC, and ensure the connection is secure.
<b>No Signal</b> is displayed on the screen.	Check that the product is connected correctly with a cable.
	Check that the device connected to the product is powered on.
<b>Not Optimum Mode</b> is displayed.	This message is displayed when a signal from the graphics card exceeds the product's <u>maximum resolution and frequency</u> . _____ _Preset Timing Modes Table and set the maximum resolution and frequency according to the product specifications.
The images on the screen look distorted.	Check the cable connection to the product.
The screen is not clear. The screen is blurry.	Set the resolution and frequency to the recommended level.
The screen appears unstable and shaky.	Check that the resolution and frequency of the PC and graphics card are set within a range compatible with the product. Then, change the screen settings if required by referring to the Additional Information on the product menu and the Standard Signal Mode Table .
There are shadows or ghost images left on the screen.	
The remote control does not work.	Make sure that the batteries are correctly in place _(+/-). _____ Check if the batteries are flat.
	Check for power failure.
	Make sure that the power cord is connected.
	Check for any special lighting or neon signs switched on in the vicinity.

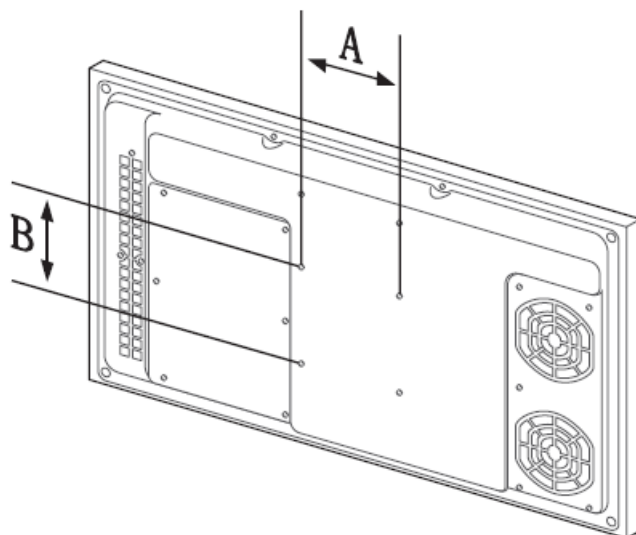
## Specification

Model Name		OH24B
Panel	Size	24 CLASS (23.8 inches / 60.4 cm)
	Display area	527.04 mm (H) x 296.46 mm (V)
Power Supply		AC100-240V~ 50/60Hz Refer to the label at the back of the product as the standard voltage can vary in different countries.
Environmental considerations	Operating	Temperature : -22 °F – 122 °F (-30 °C – 50 °C)
		Humidity : 10% – 80%, non-condensing
	Storage	Temperature : -4 °F – 122 °F (-20 °C – 50 °C)
		Humidity : 5% – 95%, non-condensing

- This is a class A product. In a domestic environment this product may cause radio interference in which case the user may be required to take adequate measures.
- For detailed device specifications, visit the Samsung website.

## Installing the product

① Model Name	② VESA screw hole specs (A * B) in millimeters	③ Standard Screw	④ Quantity
OH24B	100 x 100	M4	4



Contact **SAMSUNG WORLD WIDE**  
 Web site: <http://www.samsung.com>



Country/Area	Customer Care Center
U.S.A	1-800-SAMSUNG (726-7864)
CANADA	1-800-SAMSUNG (726-7864)
ARGENTINA	0800-555-SAMS (7267)
BOLIVIA	800 107 260
BRAZIL	0800 555 0000 (Demais cidades e regiões) 4004-0000 (Capitais e grandes centros)
CHILE	800 726 786
COLOMBIA	Bogotá en el 600 12 72 Sin costo en todo el país 01 8000 112 112 Y desde tu celular #726
COSTA RICA	00-800-1-SAMSUNG (726-7864)
DOMINICAN REPUBLIC	1-800-751-2676
ECUADOR	1-800-SAMSUN (72-6786)
EL SALVADOR	8000-SAMSUNG (726-7864)
GUATEMALA	1-800-299-0033
HONDURAS	800-2791-9111
JAMAICA	1-800-SAMSUNG (726-7864)
MEXICO	800-SAMSUNG
NICARAGUA	001-800-5077267
PANAMA	800-0101
PARAGUAY	0800-11-SAMS (7267)
PERU	080077708 Desde teléfonos fijos, públicos o celulares
PUERTO RICO	1-800-682-3180
TRINIDAD & TOBAGO	1-800-SAMSUNG (726-7864)
URUGUAY	0800-SAMS (7267)
VENEZUELA	0-800-100-5303

IMPORTADO POR : SAMSUNG ELECTRONICS MÉXICO S.A. DE C.V.  
 General Mariano Escobedo 476, Piso 8 Col.  
 Anzures, Alcaldía Miguel Hidalgo, Ciudad de México CP. 11590  
 TEL : (55) 5747-5100 / 800 726 7864

## Documents / Resources



[SAMSUNG OH24B 24 LED-Backlit LCD Display](#) [pdf] User Guide  
OH24B 24 LED-Backlit LCD Display, OH24B, 24 LED-Backlit LCD Display, Backlit LCD Display, LCD Display, Display

## References

- [S Samsung US | Mobile | TV | Home Electronics | Home Appliances | Samsung US](#)
- [S Digital Signage Displays | Commercial Displays | Samsung Business | US](#)