

SAMSUNG Mobile Software User Guide

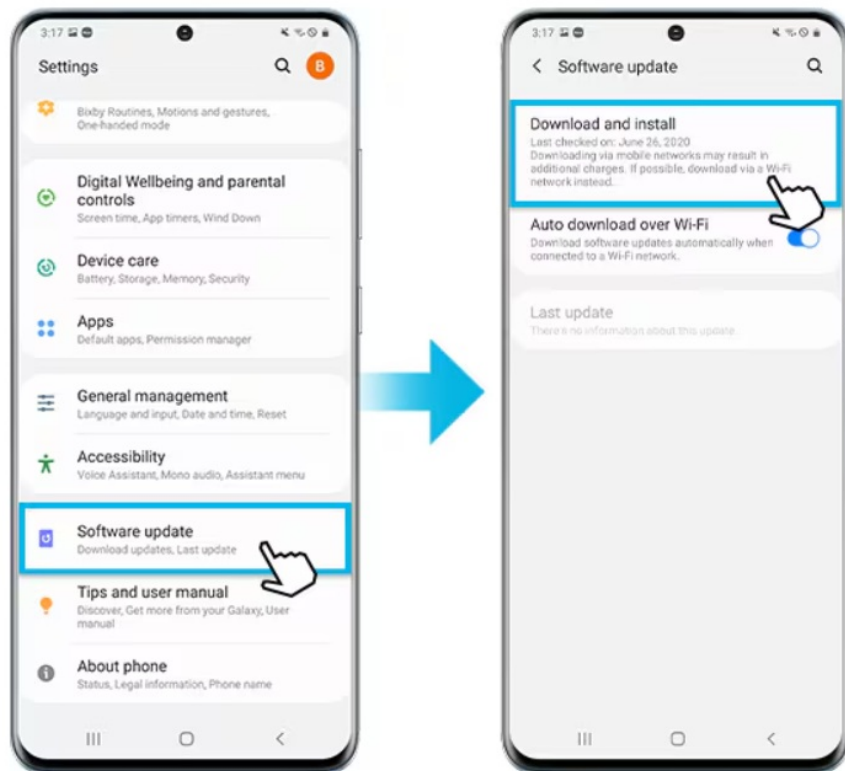
[Home](#) » [Samsung](#) » SAMSUNG Mobile Software User Guide 

Contents

- 1 SAMSUNG Mobile Software
- 2 Step 1. How to prepare the USB Memory Drive
- 3 Step2. How to upgrade the Firmware by USB
- 4 Documents / Resources
 - 4.1 References

SAMSUNG

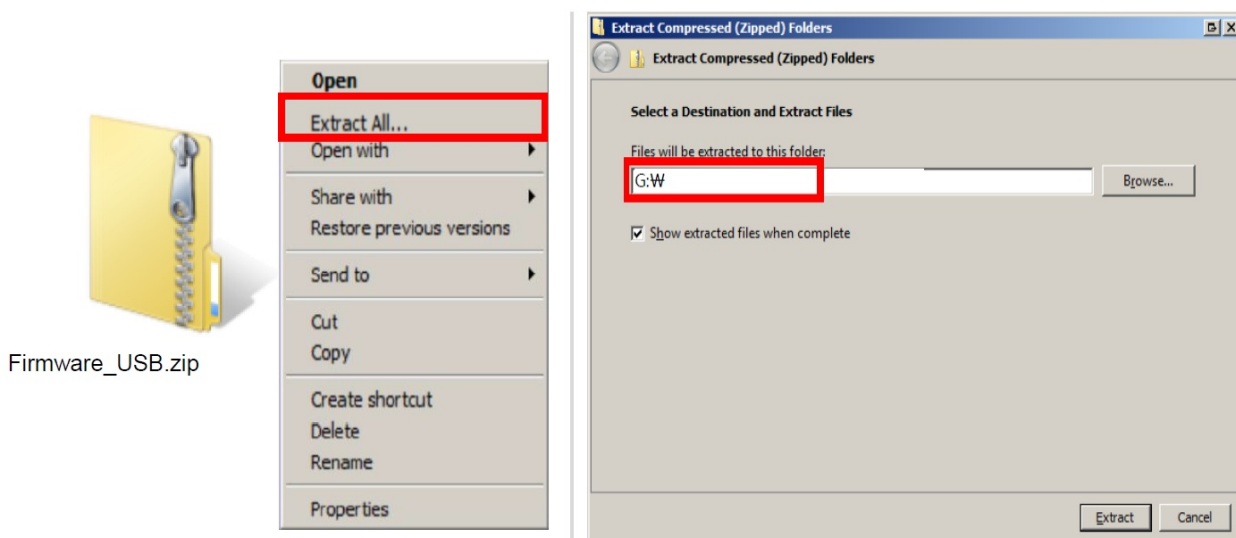
SAMSUNG Mobile Software



Step 1. How to prepare the USB Memory Drive

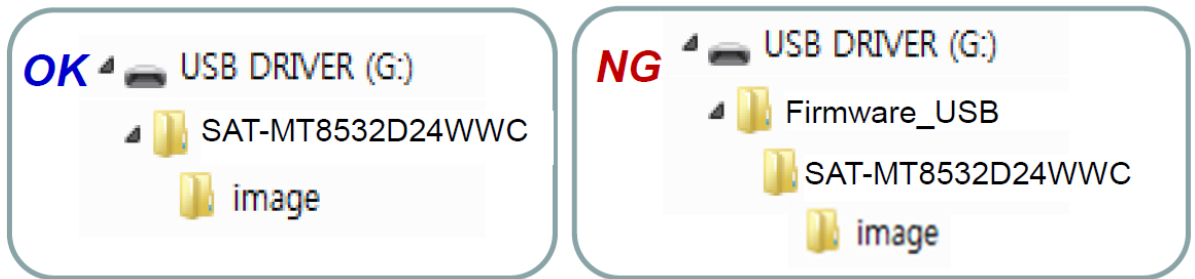
1. Download the firmware file from Samsung.com into your computer.
File Name: Firmware_USB.zip
2. Connect the USB Memory Drive to the USB port of your PC.
Copy the file to USB Memory Drive.
3. Follow below steps to extract the file and make a folder for firmware.
The folder should have same name with the file and exist in the root directly
An extracting process might be different by application in PC

1. 3- A. Click the file and 'Extract All...'. Then select USB driver that files will be extracted.



2. 3-B. Make sure that USB Driver has a two folders named 'SAT-iMX8M23WWC' and 'SAT-MT8532D23WWC'.

ex)



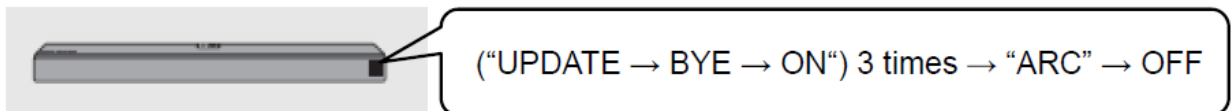
4. Safely disconnect the USB memory drive by clicking in 'Safely Remove' in Task Bar.

Step2. How to upgrade the Firmware by USB

(For HW-Q9**D/Q8**D/Q7**D)

1. Turn on the Soundbar and insert the USB drive into the SERVICE port located on the bottom of the Main Unit.
The software will begin to update automatically in less than one minute.
2. A sequence of "UPDATE" → "BYE" → "ON" will appear on the display 3 times. It would take around 7 minutes
3. After the 3 cycles are complete, the Soundbar will restart and last source used will appear on the display for about 20 seconds and then it will go off

1.

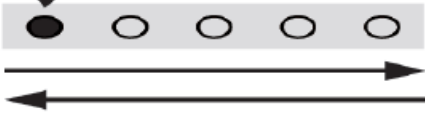







Cycle and duration of update may differ by models

Important Please DO NOT turn off the power or remove the USB while the update.

(For HW-S8**D/S7**D/S6*D and HW-LS60D)

1. Turn on the Soundbar and insert the USB drive into the SERVICE port located on the rear of the Main Unit. The software will begin to update automatically in less than one minute.
Depending on the model, a micro USB to USB adapter cable (not supplied) is required.
2. The update sequence as below table. (It would take around 4 minutes)

LED Indicator	<div>White moves from left to right and right to left X 1</div> <div></div> <div> "Start the software update."</div>
	<div>Cyan Blinks X3</div> <div></div> <div>Software Update Finish</div> <div> "The software update is complete."</div>
	<div>Red Blinks X3</div> <div></div> <div>Software Update Failed</div> <div> "The software update failed."</div>

3. After update, product will power off automatically.
- When there are more than one function blocks to be updated(B/E, Micom, etc), the updates for each function blocks will be executed sequentially after reboot so it may reboot multiple times.

Important Please DO NOT turn off the power or remove the USB while the update.

Documents / Resources

F/W Upgrade Guide	
SAMSUNG	SAMSUNG Mobile Software [pdf] User Guide Mobile Software, Mobile, Software
Samsung Electronics	

References

- [S Samsung US | Mobile | TV | Home Electronics | Home Appliances | Samsung US](#)
- [User Manual](#)

[Manuals+](#). [Privacy Policy](#)

This website is an independent publication and is neither affiliated with nor endorsed by any of the trademark owners. The "Bluetooth®" word mark and logos are registered trademarks owned by Bluetooth SIG, Inc. The "Wi-Fi®" word mark and logos are registered trademarks owned by the Wi-Fi Alliance. Any use of these marks on this website does not imply any affiliation with or endorsement.