

samsara CM33 Front Facing AI Dash Cam



samsara CM33 Front Facing AI Dash Cam Installation Guide

[Home](#) » [Samsara](#) » samsara CM33 Front Facing AI Dash Cam Installation Guide 

Contents

- 1 [samsara CM33 Front Facing AI Dash Cam](#)
- 2 [Product Information](#)
- 3 [Product Usage Instructions](#)
- 4 [AI DASH CAM DIAGRAM](#)
- 5 [WHAT YOU'LL NEED](#)
- 6 [HELPFUL LINKS](#)
- 7 [Usage Instructions](#)
- 8 [IMPORTANT SAFETY AND USE INFORMATION](#)
- 9 [FAQ](#)
- 10 [Documents / Resources](#)
 - 10.1 [References](#)



samsara CM33 Front Facing AI Dash Cam



Product Information

Specifications

- Model: AI Dash Cam CM33/34
- Features: Front-Facing Camera, Inward-Facing Camera (CM34 only), LED Dash Cam Button, Microphone, Speaker
- Included Accessories: Mount, Adhesive + Protective Liner, Diagnostic Cable, Alcohol Wipe, Allen Key, Cable Clips

Product Usage Instructions

Pre-Installation

Make sure to update the app to the latest version before starting installation. Ensure the Vehicle Gateway is installed and activated. The vehicle should be in an area with a reliable cellular connection during installation.

Mounting

Identify the mounting location on the windshield below the rear view mirror. Thoroughly clean the area with an alcohol wipe. Position the camera within the windshield wiper sweep. Peel off the adhesive liner, press the camera firmly against the windshield for 30 seconds, and remove any bubbles. Peel off the protective film from the camera lens.

Adjusting Camera Position

Loosen both mount screws using the larger end (Hex M3) of the Allen key. Rotate the camera body to hang vertically and lightly tighten the screws. For CM34, adjust the inward-facing camera angle towards the center of the cabin using the smaller end (Hex M2) of the Allen key. Do not fully tighten until positioning is validated.

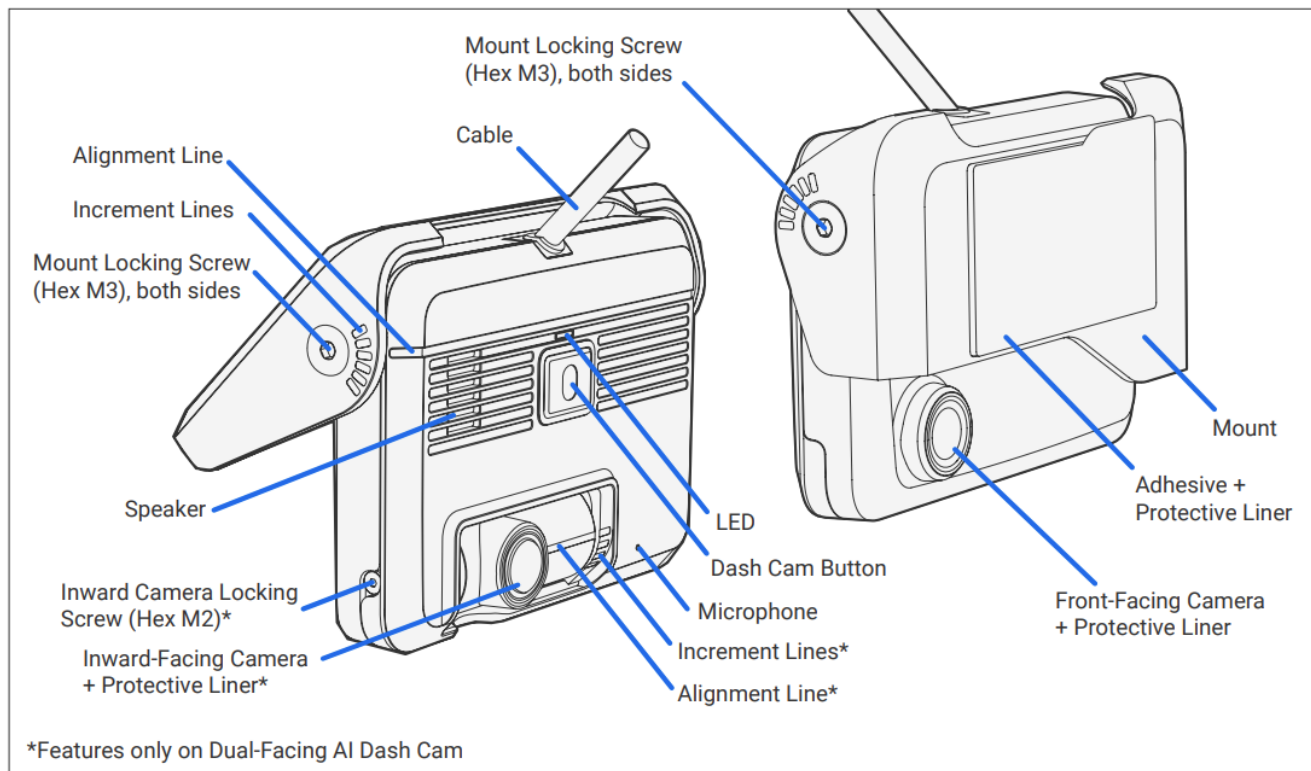
Cable Installation

Run the cable across the top of the windshield and secure using cable clips or tuck it under the glass seal. Plug the camera into the Vehicle Gateway's USB port without wrapping the cable around it.

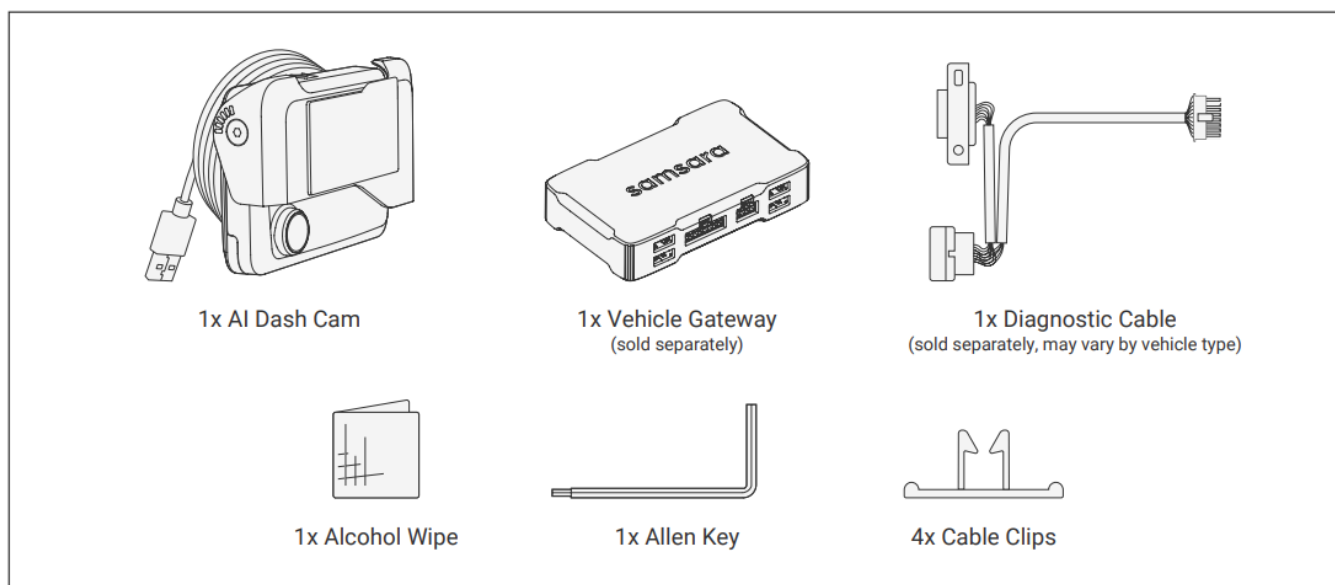
Installation Validation

Turn on the vehicle and confirm installation in either the Samsara Dashboard or Fleet App by following the provided instructions for CM33/34.

AI DASH CAM DIAGRAM



WHAT YOU'LL NEED



HELPFUL LINKS

- [Mounting Position Recommendations for Dash Cams \(US\) – Samsara Support](#)
- [Mounting Position Recommendations for Dash Cams \(UK\) – Samsara Support](#)

- Dash Cam Mounting Position Recommendations (Alberta, Canada) – Samsara Support
- Test Dash Cam Positioning – Samsara Support

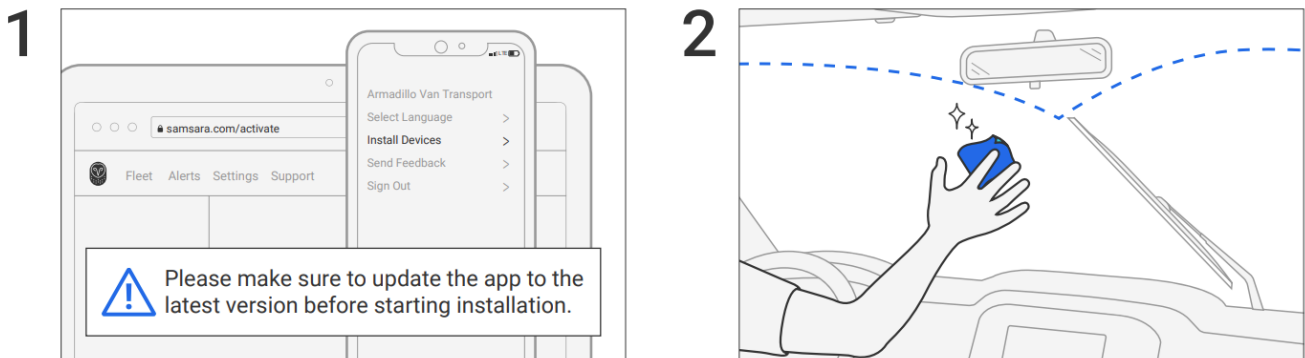
Usage Instructions

1. Make sure your Vehicle Gateway is installed and activated. This can be completed on the Samsara Dashboard or on the Samsara Fleet App.

Make sure the vehicle is in an area with reliable cellular connection during installation.

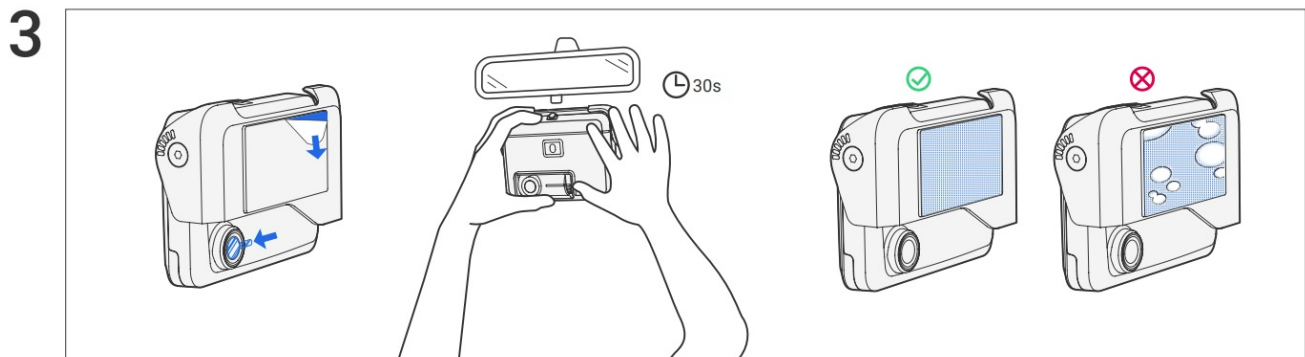
2. Make sure your Vehicle Gateway is installed and activated. This can be completed on the Samsara Dashboard or on the Samsara Fleet App.

Make sure the vehicle is in an area with reliable cellular connection during installation.



3. Make sure your Vehicle Gateway is installed and activated. This can be completed on the Samsara Dashboard or on the Samsara Fleet App.

Make sure the vehicle is in an area with reliable cellular connection during installation.



4. Make sure your Vehicle Gateway is installed and activated. This can be completed on the Samsara Dashboard or on the Samsara Fleet App.

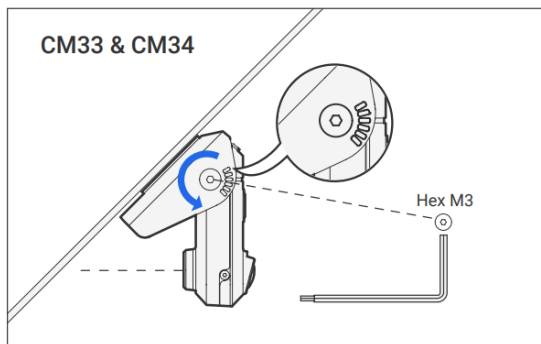
Make sure the vehicle is in an area with reliable cellular connection during installation.

CM34 Only:

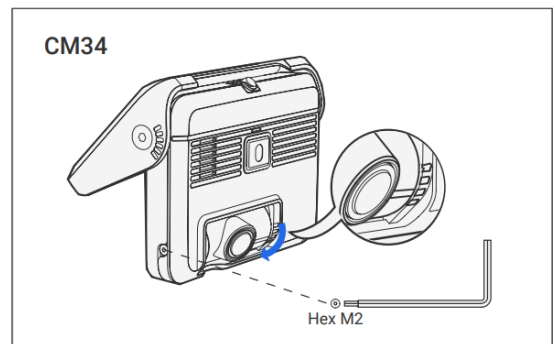
Use the smaller end (Hex M2) of the Allen key to loosen the inward facing camera screw before adjusting.

Angle the lens towards the center of the cabin. Do not fully tighten the screw until after the camera positioning is validated (Step 7).

4a



4b



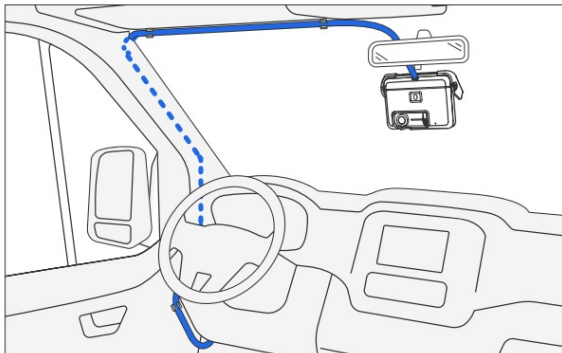
5. CM34 Only:

Use the smaller end (Hex M2) of the Allen key to loosen the inward facing camera screw before adjusting. Angle the lens towards the center of the cabin. Do not fully tighten the screw until after the camera positioning is validated (Step 7).

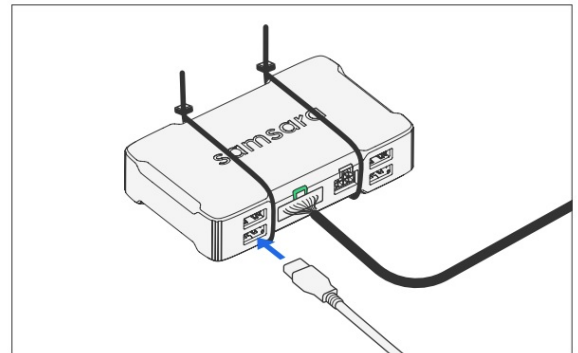
6. CM34 Only:

Use the smaller end (Hex M2) of the Allen key to loosen the inward facing camera screw before adjusting. Angle the lens towards the center of the cabin. Do not fully tighten the screw until after the camera positioning is validated (Step 7).

5



6



7. Turn the vehicle on. Confirm installation in either the Samsara Dashboard or the Fleet App:

Dashboard: On the vehicle page, go to Settings under the ... menu and click Take Picture.

Fleet App: Go to Install Devices under the ... menu, click Install new device, and follow the instructions for CM33/34.

If all points of interest are not captured (see example frames above), use the provided Allen key to loosen the cameras before re-adjusting. After all points of interest are captured, use the Allen keys to tighten both mount locking screws and, if applicable, the inward camera locking screw. Do not overtighten.

7



Note: You may need to take a short trip for the camera to begin recording. A trip is registered when the Vehicle Gateway reaches 5 mph (8 km/h).

For additional help, sign in to your Samsara account, click Get Help, and Contact Us to submit a ticket.

IMPORTANT SAFETY AND USE INFORMATION

This installation guide contains typical information specific to products manufactured at the time of its publication. The contents of this guide do not constitute a warranty and are for reference only. Consult applicable local laws and ordinances to determine any installation restrictions. It is the installer's responsibility to comply with all applicable laws, and ordinances and rights to privacy in your jurisdiction when installing this hardware.

Do not attempt to repair this product, use any third-party replacement parts with this product, or open or otherwise modify this product, except in accordance with product manuals or as otherwise instructed by Samsara. Failure to do so may cause property damage, lead to physical injury, or void your product warranty.

Any installation not in accordance with the instructions in the installation guide or otherwise in the Documentation or use of this product other than as described by the relevant IP rating or recommended operating conditions may result in unexpected downtime, system failure, physical injury or property damage, including water damage. Failure to follow these directions could result in serious injury or death.

This hardware and any associated software may not be compatible with third-party products and/or services and may interfere with the operations of or void warranties for such third party products and/or services.

Do not install or adjust hardware while driving or operating the vehicle. Do not install this hardware in a location that could interfere with the driver's visibility, operation of vehicle controls, or on or near airbag panels or within the working range of an airbag.

Do not install this hardware on or near flammable or otherwise hazardous materials. This hardware may burst if placed near flammable or other hazardous materials, creating a risk of fire, burn, shock, or other serious injury. This product includes capacitors, which may present a potential fire, explosion, electric shock, or burn hazard. Do not touch any capacitors within this hardware.

Please always pay attention to your surroundings and drive safely, comply with all traffic laws, and observe the road and driving conditions at all times. Do not rely on the product to alert the driver of safety hazards or to prevent collisions. The hardware and associated software may not work as intended depending on road conditions, other vehicles, weather, and other factors.

Disposal


This symbol on the product(s) and/or accompanying documents means that used electrical and electronic products should not be mixed with general household waste. For proper treatment, recovery and recycling, please take this product(s) to designated collection points where it will be accepted free of charge.

FAQ

Q: Where can I find additional support for my AI Dash Cam?

A: For additional support, visit samsara.com/support.

Documents / Resources

| | |
|---|--|
|  | <p>samsara CM33 Front Facing AI Dash Cam [pdf] Installation Guide</p> <p>CM33, CM34, CM33 Front Facing AI Dash Cam, CM33, Front Facing AI Dash Cam, Facing AI D ash Cam, AI Dash Cam, Dash Cam</p> |
|---|--|

References

- [User Manual](#)

[Manuals+](#), [Privacy Policy](#)

This website is an independent publication and is neither affiliated with nor endorsed by any of the trademark owners. The "Bluetooth®" word mark and logos are registered trademarks owned by Bluetooth SIG, Inc. The "Wi-Fi®" word mark and logos are registered trademarks owned by the Wi-Fi Alliance. Any use of these marks on this website does not imply any affiliation with or endorsement.