

SAMCOM Two Way Radio with Shoulder Speaker Mic



SAMCOM Two Way Radio with Shoulder Speaker Mic Instruction Manual

[Home](#) » [SAMCOM](#) » SAMCOM Two Way Radio with Shoulder Speaker Mic Instruction Manual 

Contents

- [1 SAMCOM Two-Way Radio with Shoulder Speaker Mic](#)
- [2 Product Information](#)
- [3 Product Usage Instructions](#)
- [4 FAQ](#)
- [5 How to program your SAMCOM Two-Way Radio](#)
- [6 Documents / Resources](#)
 - [6.1 References](#)



SAMCOM Two-Way Radio with Shoulder Speaker Mic



Product Information

Specifications

- Product Name: SAMCOM Two-Way Radio
- Model: [Model Number]
- Frequency Range: [Frequency Range]
- Power Output: [Power Output]
- Channels: [Number of Channels]
- Battery Type: [Battery Type]
- Dimensions: [Dimensions]
- Weight: [Weight]

Product Usage Instructions

Step 1: Download Customer Service Software

1. Go to the SAMCOM website at <http://www.sanconsales.com/download.html>
2. Locate the software download named “SamcomRadioFreqTools_V1.1_2023 04 17” and click on it to start the download.

Step 2: Unzip the Software

If you don't have an unzipping tool installed on your PC, follow these steps:

1. Visit the 7-Zip website at <https://www.7-zip.org/>
2. Download the free 7-Zip software and install it on your PC.
3. Once installed, right-click on the downloaded software file and choose “Extract Here” or “Extract to [Folder Name]” to unzip the contents.

Step 3: Connecting the Radio to the PC

Before connecting the radio to your PC, ensure that it is powered off.

1. Locate the programming cable that came with your SAMCOM Two-Way Radio.
2. Connect one end of the programming cable to the radio's programming port.
3. Connect the other end of the programming cable to an available USB port on your PC.
4. Turn on the radio.

Step 4: Programming the Radio

1. Launch the downloaded Customer Service software on your PC.
2. Select the appropriate COM port for your radio from the software's interface.
3. Click on the “Connect” button to establish a connection between the software and your radio.
4. Follow the software's instructions to program your SAMCOM Two two-way radio, including setting frequencies, channel names, and other desired settings.
5. Once you have finished programming, click on the “Write” button to save the changes to your radio.

FAQ

Q: Can I use a different unzipping tool instead of 7-Zip?

A: Yes, you can use any other unzipping tool of your choice. 7-Zip is recommended as a free and reliable option.

Q: Do I need to install any drivers to connect my SAMCOM Two-Way Radio to my PC?

A: No, the necessary drivers are usually included in the Customer Service software. However, make sure your PC's operating system is up to date to ensure proper driver installation.

Q: How do I know which COM port to select in the Customer Service software?

A: You can check the COM port associated with your SAMCOM Two two-way radio by going to Device Manager on your PC. Look for the “Ports (COM & LPT)” section and find the corresponding COM port for your radio.

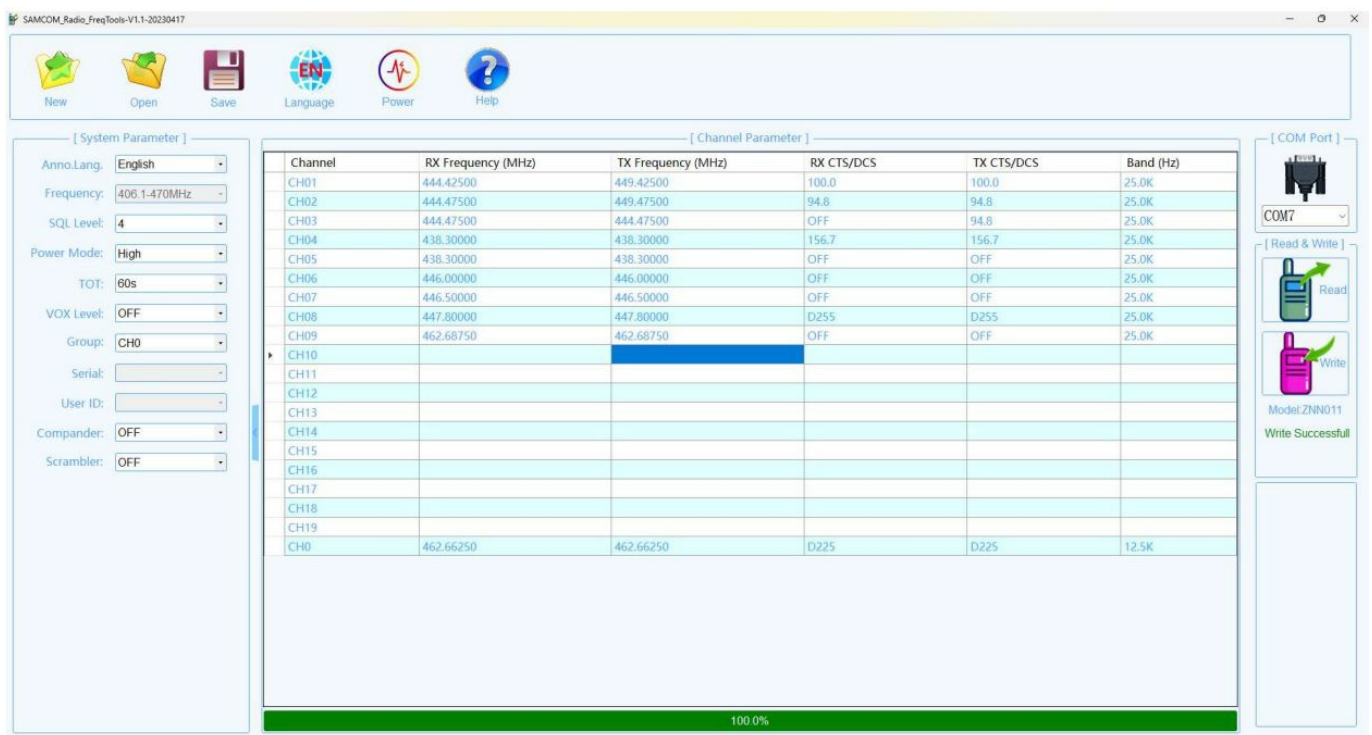
Q: Can I program multiple SAMCOM Two Way Radios using the same software?

A: Yes, you can program multiple radios using the Customer Service software. Simply connect each radio one at a time and repeat the programming steps mentioned above.


How to program your SAMCOM Two-Way Radio

1. First download the free Customer Service program software from SAMCOM at

- <http://www.sanconsales.com/download.html>
 - The name of the download is “SamcomRadioFreqTools_V1.1__20230417”
2. Unzip the free software on your PC. If you do not have an unzipping tool installed on your PC, you can obtain a free copy of “7-Zip” at
- <https://www.7-zip.org/>
3. Once the program is unzipped and installed, run the SAMCOM programmable Program. A list of pre-programmed frequencies will be displayed. Plug in your USB program cable into your PC, and the other end of the program cable into the speaker microphone jack of your SAMCOM radio. Next select the proper USB port on the top right of the screen. Press “READ” on the right side of the screen. The frequencies that are stored on your radio from the factory will now be displayed. Make any necessary changes to the frequencies that you wish, then the CTS/DCS tones (PL Tones) and select either 12.5K or 25.0K bandwidth (narrowband or wideband) depending on your radio service. Most FRS Frequencies are narrowband (12.5K) and Amateur Radio (HAM Radio) frequencies are wideband (25.0K)



When you are done entering all the frequencies, on the left side of the program screen, make any changes that you wish, Language, squelch, and power level. Next, write the program into the radio by pressing “WRITE” on the right side of the screen. When 100% appears on the bottom of the screen, the radio is programmed. If you are programming a fleet or small group of radios, simply plug the program cable into the second radio press “WRITE” and continue with however many radios that you have in your group of radios.

| | |
|--|---|
|  | <p>SAMCOM Two Way Radio with Shoulder Speaker Mic [pdf] Instruction Manual Two Way Radio with Shoulder Speaker Mic, Two, Way Radio with Shoulder Speaker Mic, Shoul der Speaker Mic, Speaker Mic</p> |
|--|---|

References

- [!\[\]\(2824aab9645d9fab95bae27ff6828dab_img.jpg\) **SANCON**](#)
- [**User Manual**](#)