



**CAN Series
Defender
Automatic
Reverse
Light Kit**



SAM S CAN Series Defender Automatic Reverse Light Kit Installation Guide

[Home](#) » [SAM S](#) » SAM S CAN Series Defender Automatic Reverse Light Kit Installation Guide 

Contents

- [1 SAM S CAN Series Defender Automatic Reverse Light Kit](#)
- [2 Product Information](#)
- [3 Product Usage Instructions](#)
- [4 WHAT'S INCLUDE](#)
- [5 OVERVIEW](#)
- [6 INSTALLATION INSTRUCTION](#)
- [7 Factory Can-Am Diagnostic Connector](#)
- [8 Operation of Reverse Lights](#)
- [9 Documents / Resources](#)
 - [9.1 References](#)



SAM S CAN Series Defender Automatic Reverse Light Kit



Product Information

Specifications

- **Product Name:** CAN-AM Defender Backup Beeper Kit
- **Required Tools:**
 - Torx T-30
 - 10mm Wrench/Socket
 - Philips Screwdriver/Bit

Product Usage Instructions

Step 1: Secure and Plug-in Controller

1. Remove diagnostic connector and plug connector into the controller.
2. Secure fuse and relay with the provided mounting screw.

Step 2: Plug-In and Secure Backup Beeper

1. Secure the backup beeper using the preexisting T-30 bolt.
2. Plug the backup beeper into Sam's Backup Lights harness.

Frequently Asked Questions (FAQ)

- **Q: Can I install the backup beeper kit without professional help?**

A: While it is possible to install the kit following the provided instructions, it is recommended to seek professional help for proper installation to avoid any damage.
- **Q: Are there any specific maintenance requirements for the backup beeper?**

A: The backup beeper does not require regular maintenance. Ensure all connections are secure and functioning

properly.

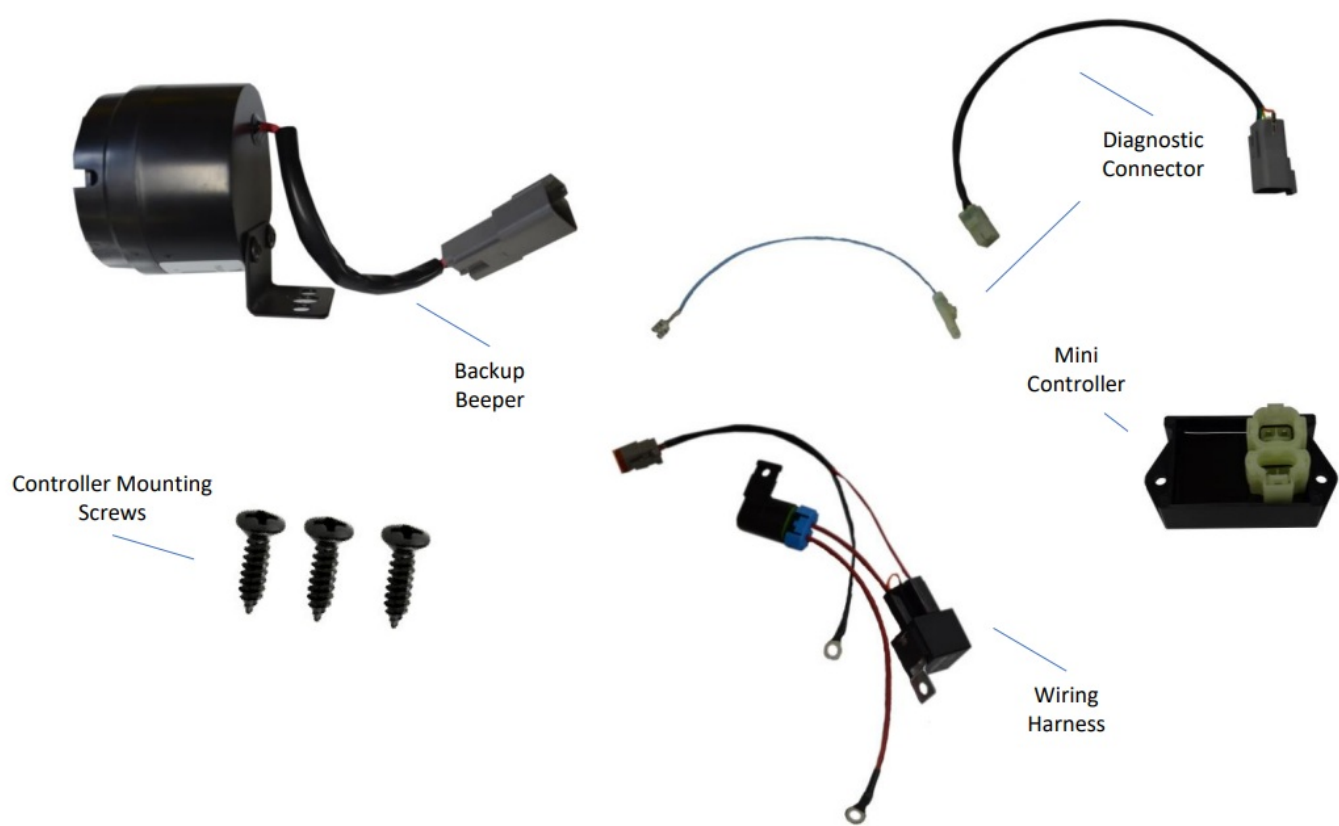
WHAT’S INCLUDE

Description	Quantity
Wiring Harness	1
Backup Beeper	1
Relay	1
Controller	1
Mounting Screws	3

Required Tools:

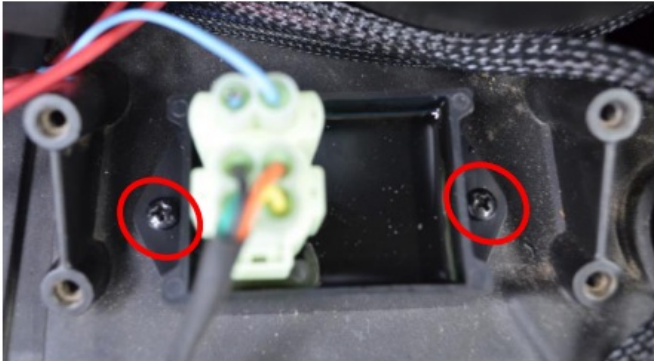
Torx T-30
10mm Wrench/Socket
Philips Screwdriver/Bit

OVERVIEW



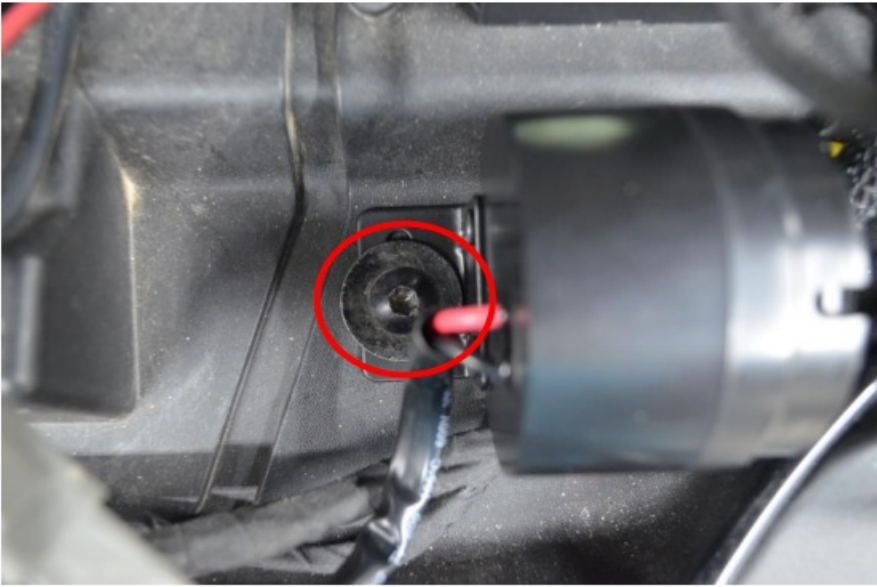
INSTALLATION INSTRUCTION

Step 1: Secure and Plug- in Controller



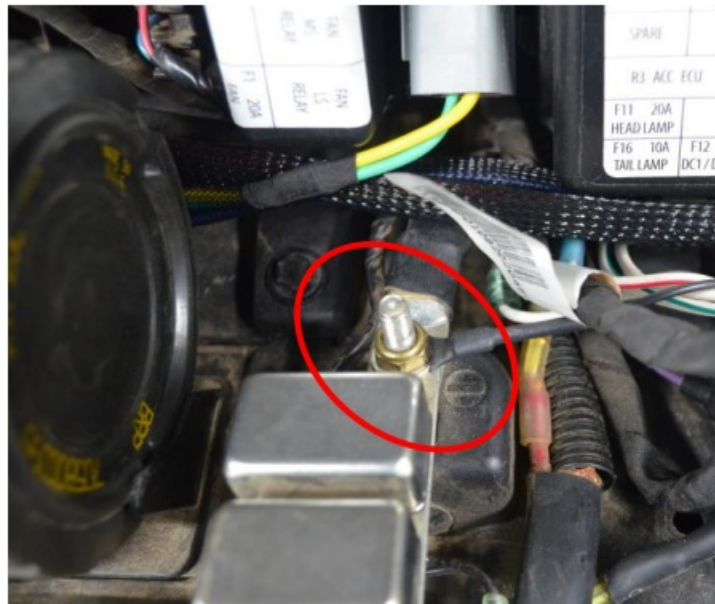
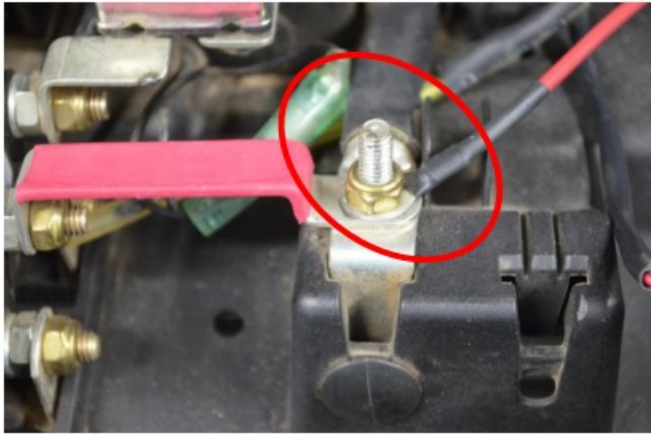
1. Remove diagnostic connector and plug connector into controller.
Note: Refer to page 5 for explanation of diagnostic connector assembly.
2. Secure controller with provided mounting screws; if necessary, drill 1/16" pilot hole.
3. Secure fuse and relay with provided mounting screw.

Step 2: Plug – In and Secure Backup Beeper



1. Secure backup beeper using preexisting T-30 bolt.
2. Plug the backup beeper into the Sam's Backup Lights harness.

Step 3: Attach Leads



1. Remove nut from red terminal under hood with 10mm wrench & secure red ring terminal.
2. Repeat process for black ring terminal.

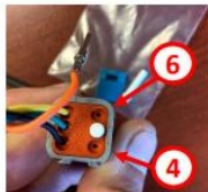
Factory Can-Am Diagnostic Connector

The Orange wire from Sam's Controller needs to match the Orange/Green wire on the factory Can-Am diagnostic connector

Can-Am 2021+ Diagnostic Connector



Can-Am Pre-2021 Diagnostic Connector

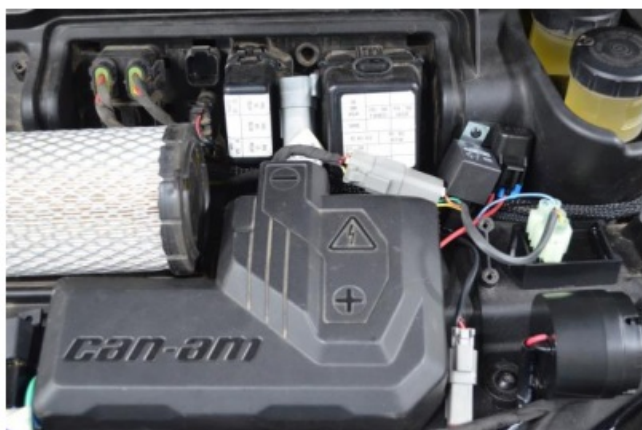


Install wedge lock (Green) with small screwdriver or pliers and sealing plug (White) into empty hole

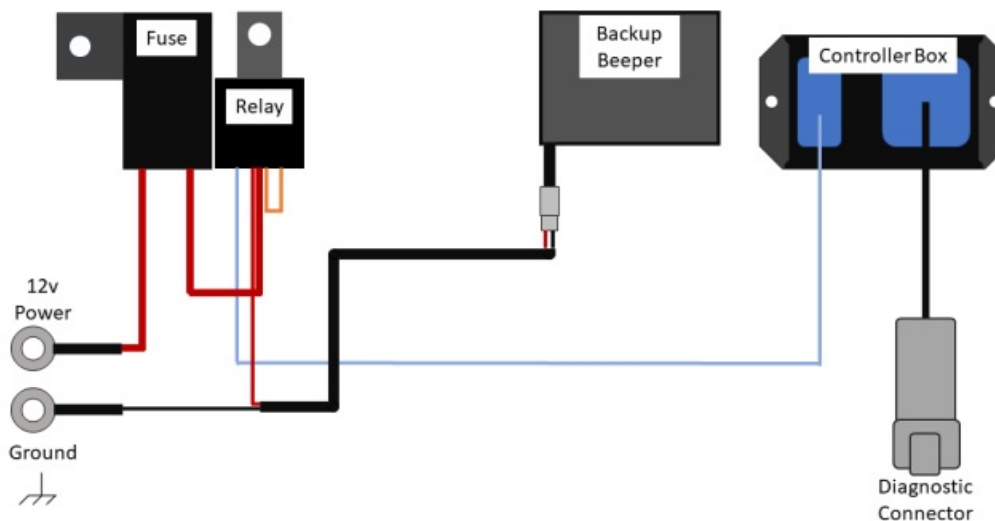
Operation of Reverse Lights

Sam's Backup Lights are automatic. NO switches or programming required. When the vehicle is shifted into reverse, the backup beeper will automatically come on.

Note: If the ignition is turned off while the vehicle is in reverse the backup beeper will remain ON until the ECU enters sleep mode (approximately 30 secs to 2 minutes depending on vehicle and ECU type).

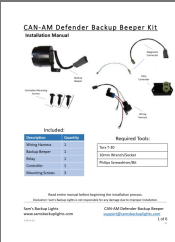


Automatic Backup Beeper



Sam's Backup Lights

Documents / Resources



CAN-AM Defender Backup Beeper Kit
Installation Manual

Included:

Item	Quantity
Backup Beeper	1
Backup Light	1
Wiring Harness	1
Mounting Brackets	2

Required Tools:

1/2" Drive
1/2" Drive Bit
1/2" Drive Socket
1/2" Drive Wrench
1/2" Drive Ratchet
1/2" Drive Extension Bar

Read entire manual before beginning the installation process.
Always use proper safety techniques when working with electrical systems.
Sams Backup Lights
www.samsbackuplights.com
CAN-AM Defender Backup Beeper
support@samsbackuplights.com

[SAM S CAN Series Defender Automatic Reverse Light Kit](#) [pdf] Installation Guide
CAN Series Defender Automatic Reverse Light Kit, CAN Series, Defender Automatic Reverse Light Kit, Automatic Reverse Light Kit, Reverse Light Kit, Light Kit

References

- [🌐 Sam's Backup Lights](#)
- [User Manual](#)

Manuals+, Privacy Policy

This website is an independent publication and is neither affiliated with nor endorsed by any of the trademark owners. The "Bluetooth®" word mark and logos are registered trademarks owned by Bluetooth SIG, Inc. The "Wi-Fi®" word mark and logos are registered trademarks owned by the Wi-Fi Alliance. Any use of these marks on this website does not imply any affiliation with or endorsement.