

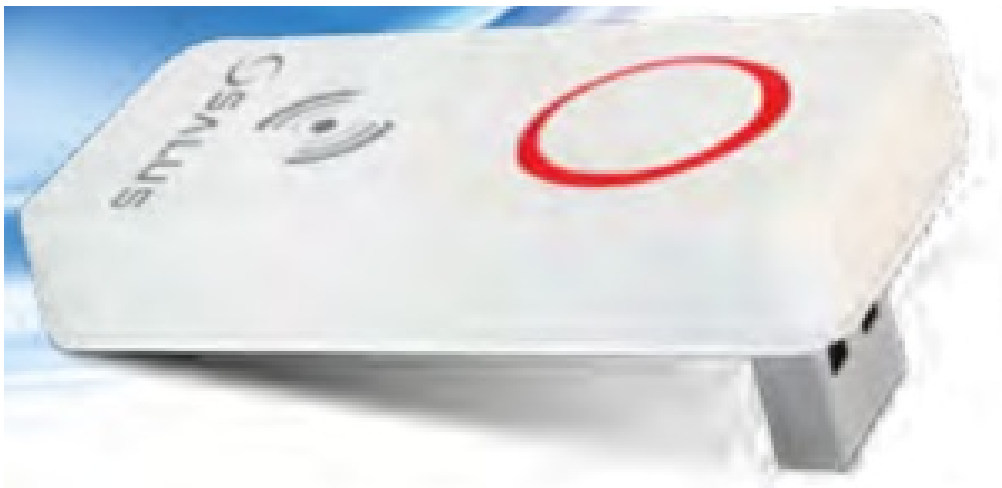


SALUS ZigBee Network Signal Repeater RE10RF Installation Guide

[Home](#) » [SALUS](#) » SALUS ZigBee Network Signal Repeater RE10RF Installation Guide 



ZigBee network signal repeater
Model: RE10RF



Installation Manual

Contents

- 1 Introduction
- 2 Product Compliance
- 3 Safety Information
- 4 Installation
- 5 RE10RF pairing in Online mode
- 6 RE10RF pairing in Offline mode
- 7 Identification process of the paired devices
- 8 Factory reset
- 9 Documents / Resources
- 10 Related Posts

Introduction

RE10RF repeater is a device that increases ZigBee network signal range for SALUS iT600 system devices. RE10RF is helpful at installations where barriers like long distances, thick walls, metal elements, or others can worsen wireless connectivity. PDF a version of this manual can be found on our website: www.salus-controls.eu

Product Compliance

This product meets the following directive

- Electromagnetic Directive 2004/108/EC
- Low Voltage Directive 2006/95/EC

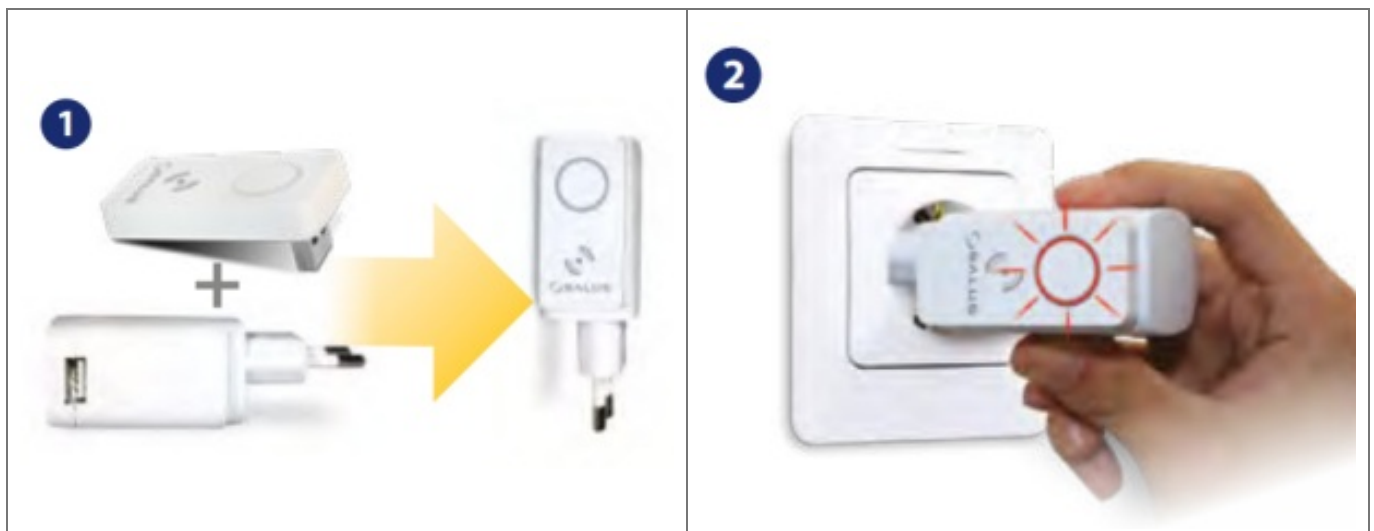
Full information is available on the website www.saluslegal.com



Safety Information

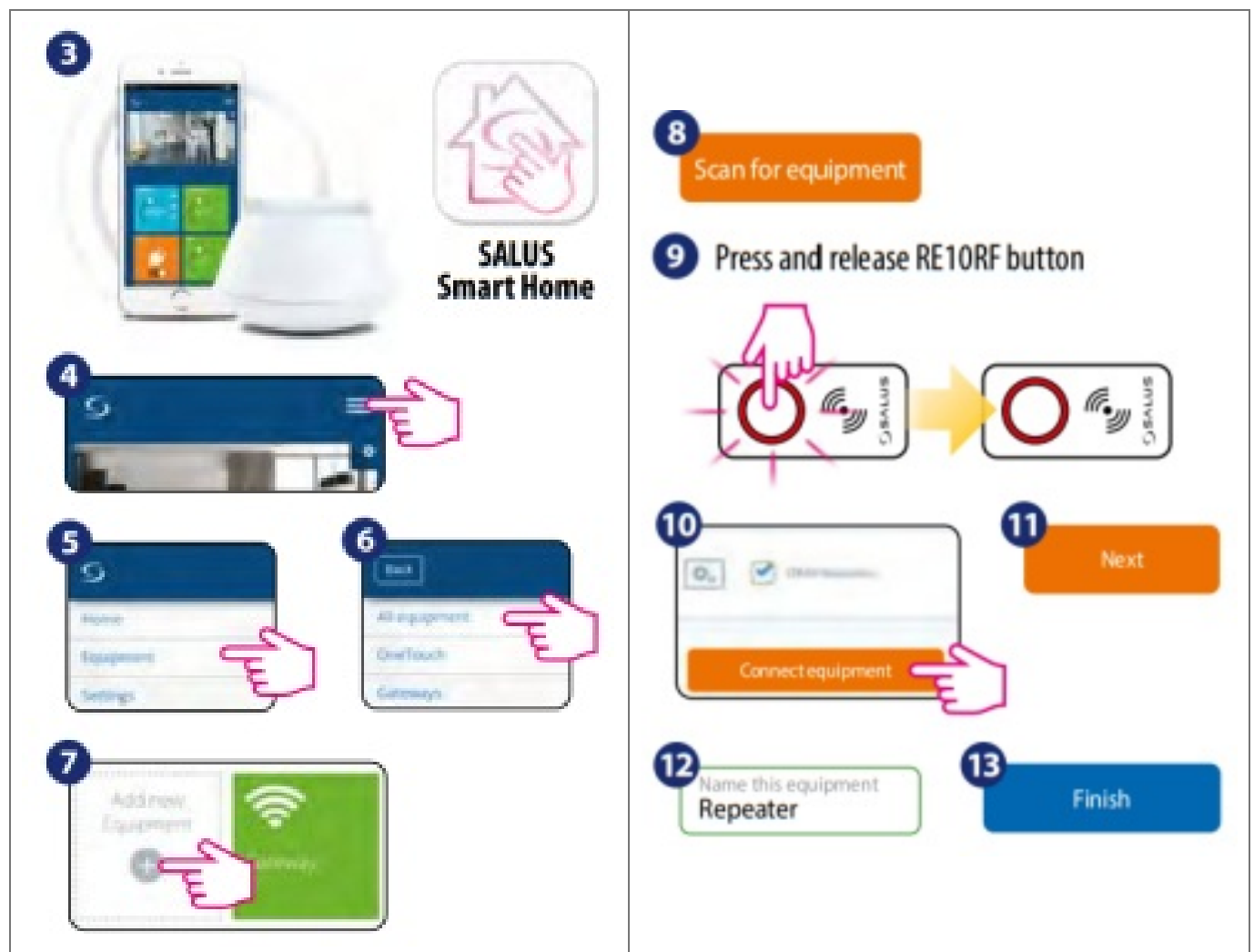
Use in accordance to national and EU regulations. Use the device as intended, keeping it in dry condition. Product for indoor use only. Installation must be carried out by a qualified person in accordance to national and EU regulations.

Installation



RE10RF pairing in Online mode

(with an Internet connection using the SALUS Smart Home app)



RE10RF pairing in Offline mode

(without an Internet connection)



WARNING!

Do not use CO10RF coordinator with UGE600 simultaneously.

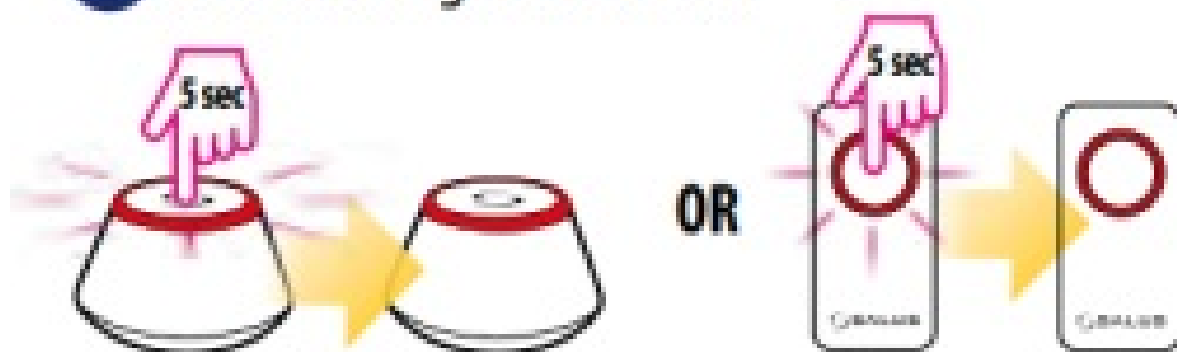
3 Open the ZigBee network



4 Press and release RE10RF button

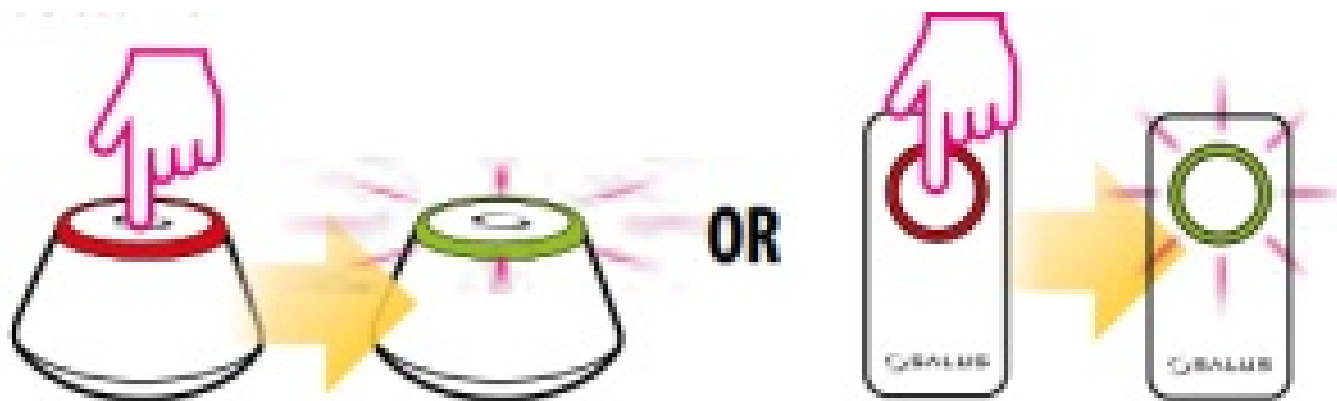


5 Close the ZigBee network



Identification process of the paired devices

To check which devices are paired with your iT600 system, press the CO10RF or UGE600 button. When CO10RF or UGE600 LED diode flashes green – then each correctly paired device will show appropriate information. Wait 10 minutes for the process to finish automatically or press the CO10RF or UGE600 button again to finish it manually.



Factory reset

Press and hold 15 seconds the RE10RF button. When the process is finished, the LED diode will be solid red.

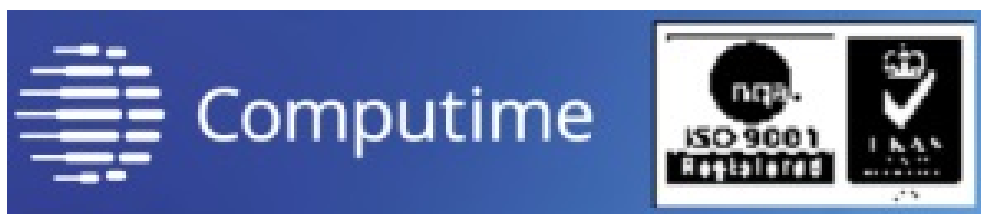


Importer:

SALUS Controls Plc
Units 8-10 Northfield Business Park
Forge Way, Parkgate, Rotherham
S60 1SD, United Kingdom

DISTRIBUTOR OF SALUS CONTROLS:

QL CONTROLS Sp. z o.o., Sp.k.
Rolna 4, 43-262 Kobielice, Poland



www.salus-controls.eu

SALUS Controls is a member of the Computime Group.
Maintaining a policy of continuous product development
SALUS Controls plc reserve the right to change
specification, design, and materials of products listed in
this brochure without prior notice.



Issue date:
05/2020V001
V 2020

Documents / Resources



[SALUS ZigBee Network Signal Repeater RE10RF](#) [pdf] Installation Guide
SALUS, RE10RF, ZigBee, Network, Signal, Repeater

Manuals+