



SALUS SR600 Smart Switching Relay User Guide

[Home](#) » [SALUS](#) » SALUS SR600 Smart Switching Relay User Guide 



SR600




Quick Guide

Contents

- [1 SR600 Smart Switching Relay](#)
- [2 Wiring diagram](#)
- [3 Terminals](#)
- [4 Pairing Process](#)
- [5 LED Indication](#)
- [6 Remove device](#)
- [7 Button operation](#)
- [8 Documents / Resources](#)
 - [8.1 References](#)
- [9 Related Posts](#)

SR600 Smart Switching Relay

Introduction: Smart Relay (SR600) is a switching relay product that can be used to power on or off a maximum 16A load. It can be installed directly within a wall box or surface mounted onto the wall (using the optional SRS600 wall mount bracket). This product must be used with the Universal Gateway (purchased separately). The Universal Gateway allows communication with other SALUS Smart Home products using the SALUS Smart Home App.

Product Compliance: This product complies with the essential requirements and other relevant provisions of Directives 2014/53/EU (RED) and 2011/65/EU. The full text of the EU Declaration of Conformity is available at the following internet address: www.saluslegal.com.  2405-2480MHz; <14dBm



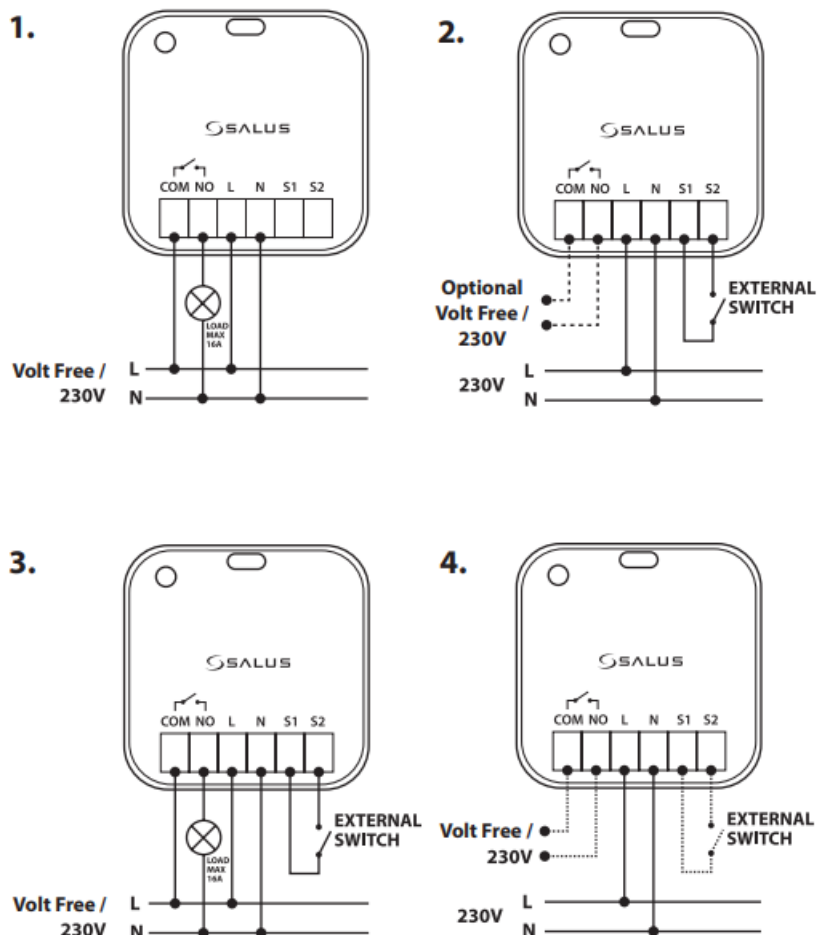
Safety Information: Use in accordance with the regulations. Indoor use only. Keep your device completely dry. Disconnect your device before cleaning it with a dry cloth. This accessory must be fitted by a competent person, and installation must comply with the guidance, standards and regulations applicable to the city, country or state where the product is installed. Failure to comply with the relevant standards could lead to prosecution.



Smart Home



Wiring diagram



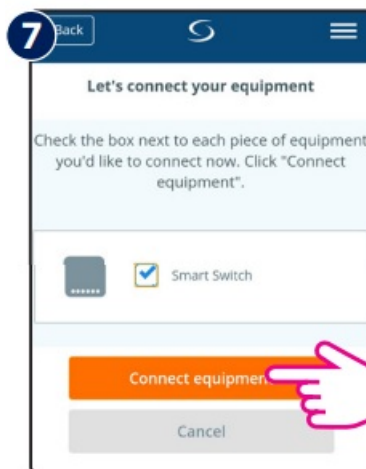
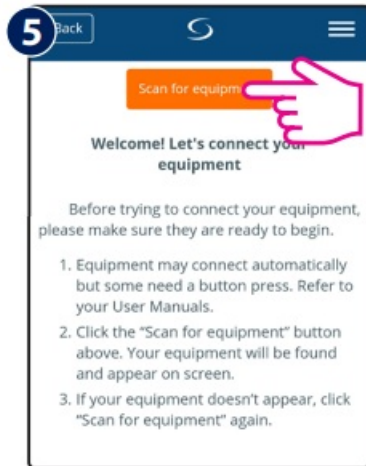
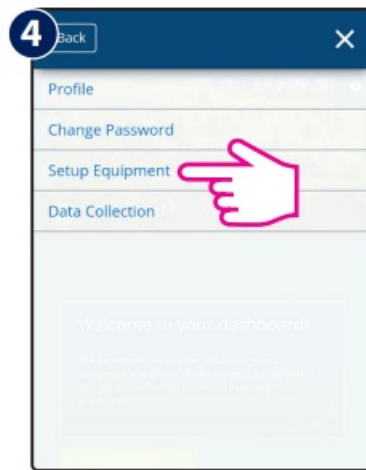
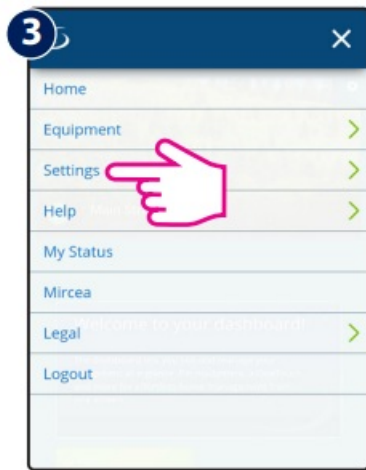
Terminals

COM	Common terminal
NO	Switch terminal
L	Power supply 230V AC
N	Power supply 230V AC
S1/S2	Switch input terminals

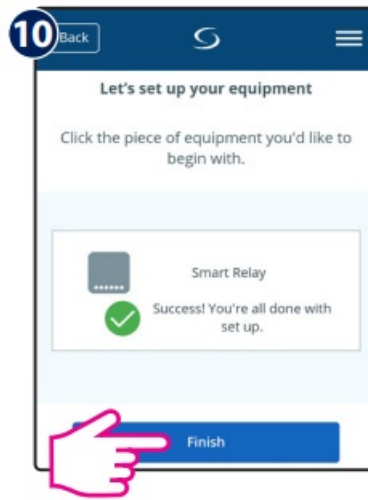
Pairing Process



Once powered, the LED will flash red to indicate pairing mode.



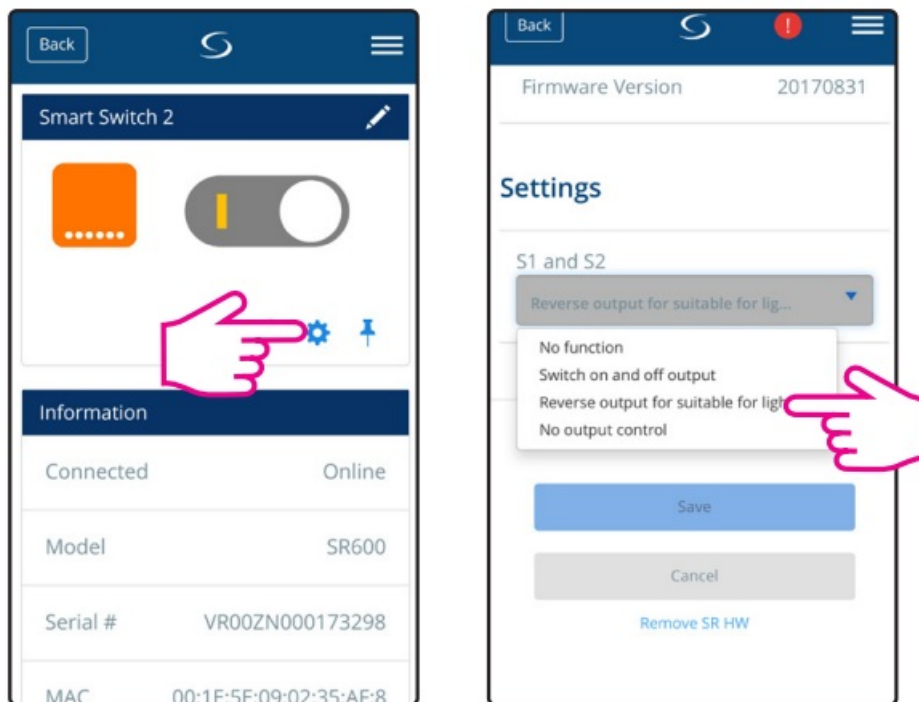
9 Follow the onscreen instructions to complete the setup.



LED Indication

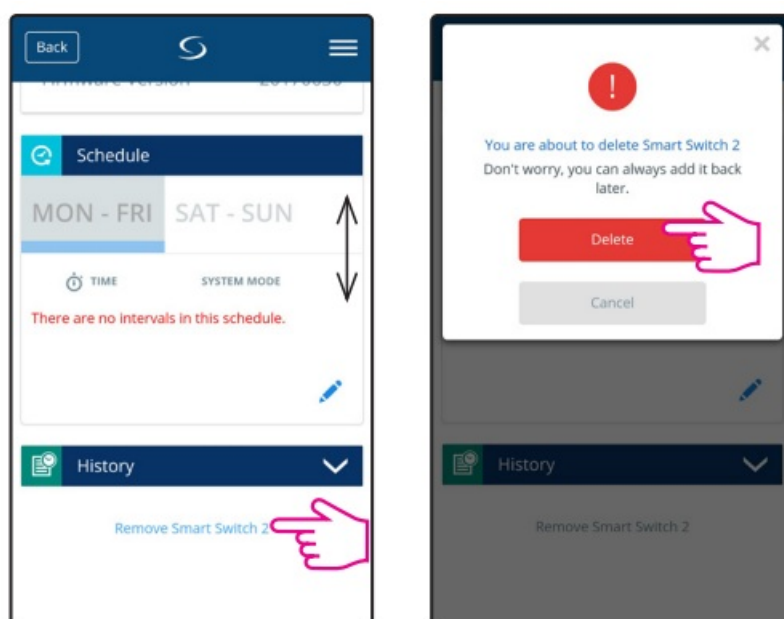
Description	LED
Joining Network automatically	RED LED pulsing
Joining Network trigger by button press	RED+GREEN LED turn on for 1s, then RED LED pulsing
Device Relay ON with Network	GREEN LED ON
Device Relay OFF with Network	RED LED ON
Device Relay OFF without Network	RED LED pulsing
Device Relay ON without Network	RED + GREEN LED pulsing
Identify	GREEN LED flashing for up to 10 minutes

S1&S2 terminals



Option	Description
1. No Function	S1/S2 non-active (Turning COM/NO on using the App)
2. Switch on and off output	Switch COM/NO is on, while S1/S2 contact is triggered
3.Reverseoutputfor suitableforlighting	Short circuits of terminals S1/S2 ca use switching on or off (b i-stable contact)
4.Nooutputcontrol	S1/S2 active and work independently of COM/NO output. Sw itch COM/NO is turned on via the App

Remove device



Button operation



To identify the device, short press the button.

To enter pair mode, press and hold the button for 3 seconds.

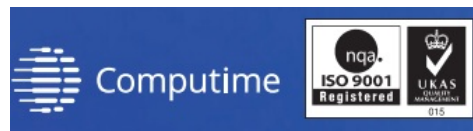
To do a factory reset, press and hold the button until LED flashes red (max 15 sec).

FR/ NL / DE:

support@salus-controls.de

tel: +49 6108 8258515

www.salus-controls.com



SALUS Controls is a member of the Computime Group

Maintaining a policy of continuous product development SALUS Controls plc reserve the right to change specification, design and materials of products listed in this brochure without prior notice.

Issue Date: September 2017 V002

For PDF Installation guide please go to

www.salus-manuals.com

Head Office:

SALUS Controls plc

SALUS House

Dodworth Business Park South,

Whinby Road, Dodworth,

Barnsley S75 3SP, UK.

T: +44 (0) 1226 323961

E: sales@salus-tech.com







Documents / Resources



[SALUS SR600 Smart Switching Relay \[pdf\] User Guide](#)

SR600, Smart Switching Relay, SR600 Smart Switching Relay, SR600 Smart Relay, Relay, Smart Relay

References

-  [Choose your country – Salus](#)
-  [salus-manuals.com](#)
-  [Salus – Smart Technology for your comfort](#)
-  [Salus – Smart Technology for your comfort](#)

Manuals+.