



# SALUS SR600 Smart Remote Relay Device Instruction Manual

[Home](#) » [SALUS](#) » SALUS SR600 Smart Remote Relay Device Instruction Manual 

## Contents

- [1 SALUS SR600 Smart Remote Relay Device](#)
- [2 Introduction](#)
- [3 SALUS Smart Home App.](#)
- [4 Wiring diagram](#)
- [5 Terminals](#)
- [6 Pairing Process](#)
- [7 LED Indication](#)
- [8 Remove device](#)
- [9 Button operation](#)
- [10 Documents / Resources](#)
  - [10.1 References](#)
- [11 Related Posts](#)



**SALUS SR600 Smart Remote Relay Device**



## Introduction

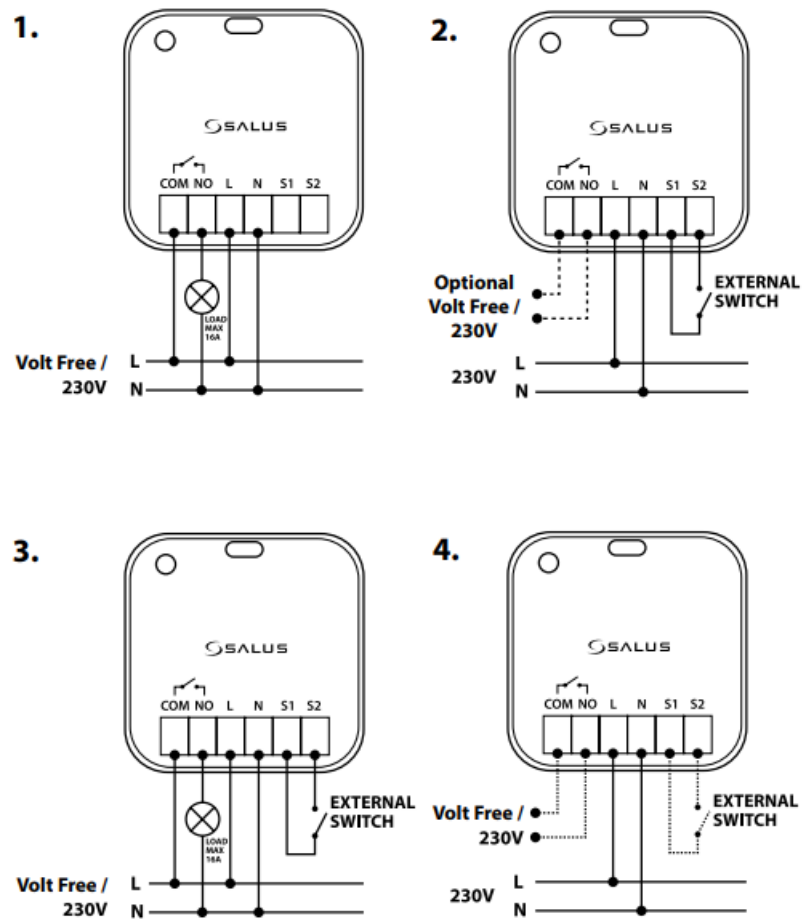
Smart Relay (SR600) is a switching relay product that can be used to power on or off a maximum 16A load. It can be installed directly within a wall box or surface mounted onto the wall (using the optional SRS600 wall mount bracket). This product must be used with the Universal Gateway (purchased separately). The Universal Gateway allows communication with other SALUS Smart Home products using the

## SALUS Smart Home App.

Product Compliance: This product complies with the essential requirements and other relevant provisions of Directives 2014/53/EU (RED) and 2011/65/EU. The full text of the EU Declaration of Conformity is available at the following internet address: [www.saluslegal.com](http://www.saluslegal.com). 2405-2480MHz; <14dBm

**Safety Information:** Use in accordance with the regulations. Indoor use only. Keep your device completely dry. Disconnect your device before cleaning it with a dry cloth. This accessory must be fitted by a competent person, and installation must comply with the guidance, standards and regulations applicable to the city, country or state where the product is installed. Failure to comply with the relevant standards could lead to prosecution.

## Wiring diagram

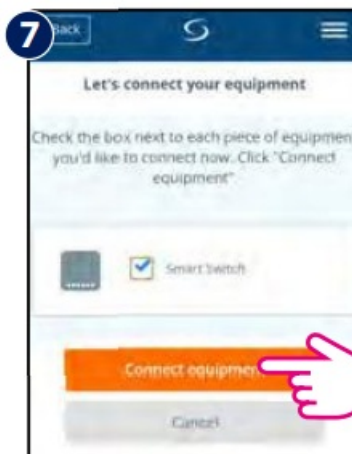
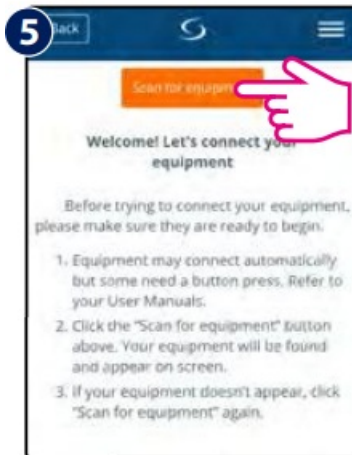
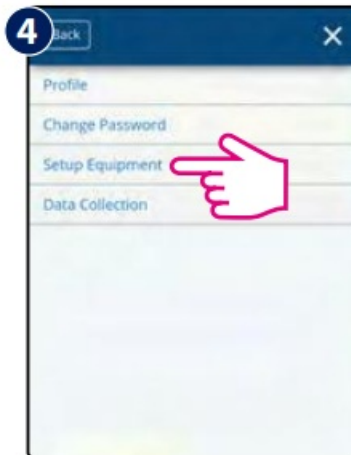
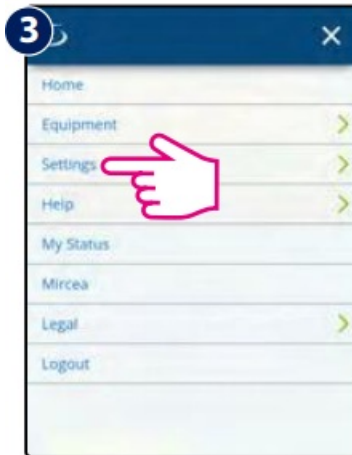
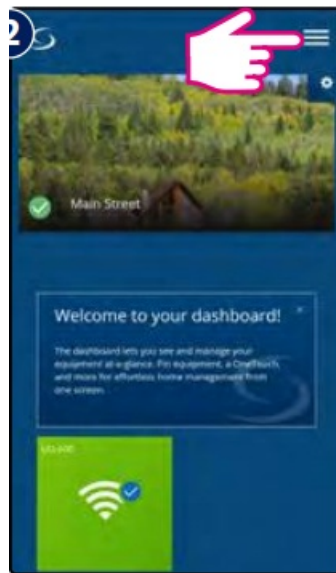


## Terminals

COM	Common terminal
NO	Switch terminal
L	Power supply 230V AC
N	Power supply 230V AC
S1/S2	Switch input terminals

## Pairing Process

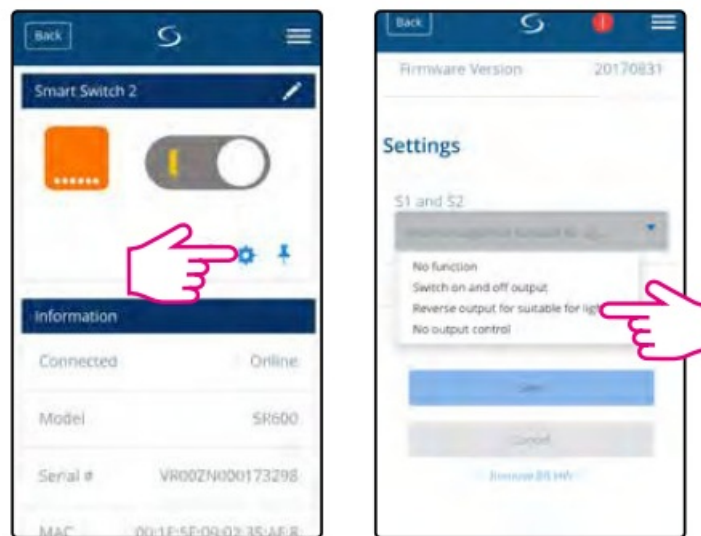




## LED Indication

Description	LED
Joining Network automatically	RED LED pulsing
Joining Network trigger by button press	RED+GREEN LED turn on for 1s, then RED LED pulsing
Device Relay ON with Network	GREEN LED ON
Device Relay OFF with Network	RED LED ON
Device Relay OFF without Network	RED LED pulsing
Device Relay ON without Network	RED + GREEN LED pulsing
Identify	GREEN LED flashing for up to 10 minutes

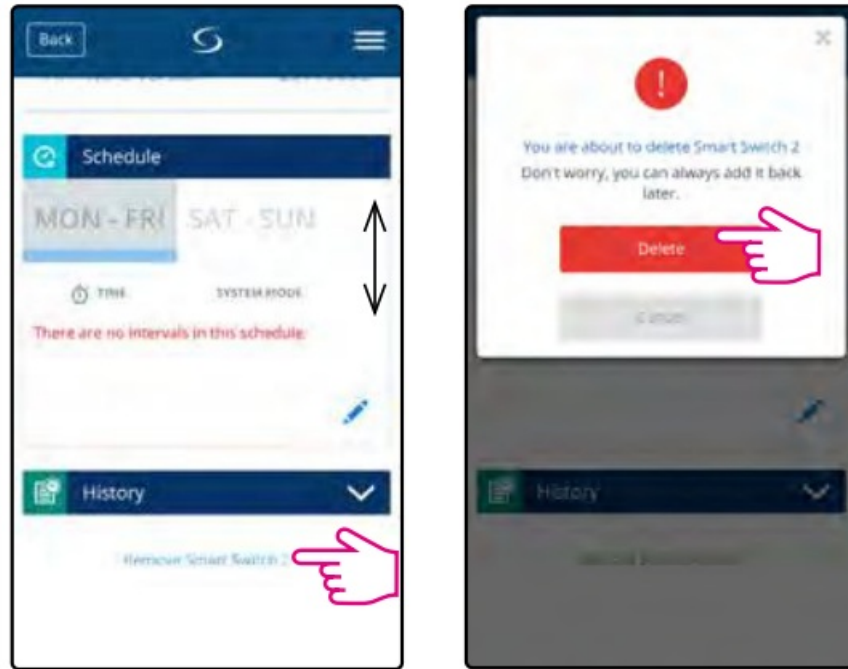
## S1&S2 terminals



EN

Option	Description
1. No Function	S1/S2 non-active (Turning COM/NO on using the App)
2. Switch on and off output	Switch COM/NO is on, while S1/S2 contact is triggered
3. Reverse output for suitable for lighting	Short circuits of terminals S1/S2 can use switching on or off (bi-stable contact)
4. No output control	S1/S2 active and work independently of COM/NO output. Switch COM/NO is turned on via the App

## Remove device



## Button operation

To identify the device, short press the button. To enter pair mode, press and hold the button for 3 seconds. To do a factory reset, press and hold the button until LED flashes red (max 15 sec)



### **SALUS Controls is a member of the Computime Group**

Maintaining a policy of continuous product development SALUS Controls plc reserve the right to change specification, design and materials of products listed in this brochure without prior notice.

**Issue Date:** 06 2020 V002 For PDF Installation guide please go to [www.salus-manuals.com](http://www.salus-manuals.com)

### **PRODUCER:**

- Salus Limited
- 6/F, Building 20E, Phase 3, Hong
- Kong Science
- Park, 20 Science Park East
- Avenue, Shatin,
- New Territories, Hong Kong

## IMPORTER:

- QL CONTROLS Sp. z o.o. Sp. k.
- ul. Rolna 4, 43-262 Kobielice

## Documents / Resources



**[SALUS SR600 Smart Remote Relay Device](#)** [pdf] Instruction Manual  
SR600, Smart Remote Relay Device, SR600 Smart Relay Device, Smart Relay Device, Relay Device, Smart Relay

## References

- [SALUS Controls - intelligent temperature control](#)
- [salus-manuals.com](#)
- [Salus – Smart Technology for your comfort](#)
- [Salus – Smart Technology for your comfort](#)

Manuals+