



SALUS Smart Button SB600 User Guide

[Home](#) » [SALUS](#) » SALUS Smart Button SB600 User Guide 

Contents

- [1 SALUS Smart Button SB600](#)
- [2 Introduction](#)
- [3 Product Compliance](#)
- [4 Installation](#)
- [5 Factory Reset](#)
- [6 Documents / Resources](#)
- [7 Related Posts](#)



SALUS Smart Button SB600



Introduction

The Smart Button is used to trigger the “One touch” and “My Status” rules that you have created for your Salus Smart Home system . Normally “One touch” and “My Status rules are triggered via the Salus Smart Home app, however the Smart Button provides an additional Method. This product must be used with the Universal Gateway (UG600/UGE600) and the Salus Smart Home App. Go to www.salus-smarthome.com for the PDF version of the manual.

Product Compliance

This product complies with the essential requirements and other relevant provisions of Directive 2014/30/EU, 2014/35/EU, 2014/53/EU and 2011/65/EU. The full text of the EU Declaration of Conformity is available at the following internet address: www.saluslegal.com.



Installation



During initialisation, the LED lights up for 2 seconds, then will flash until the network is found (max 20 times). When joined the LED will go off.

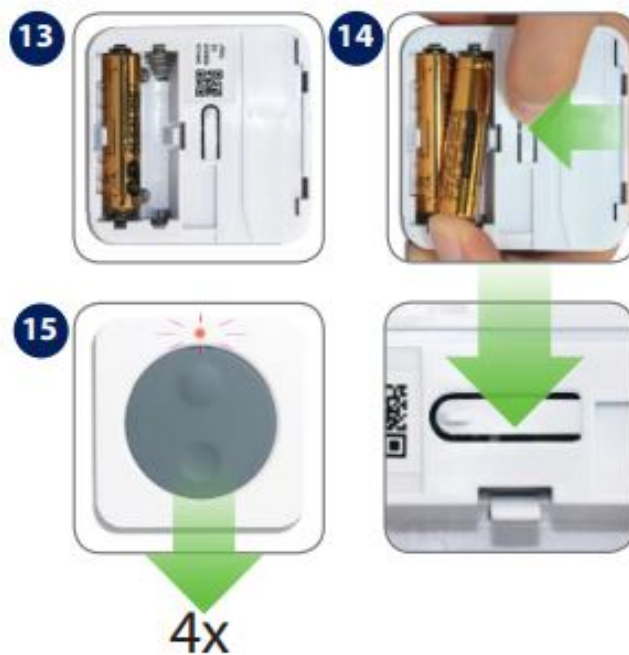


Follow the on screen instructions. Once connected, the LED will stop flashing.



Factory Reset

Remove one battery. Keep the reset button pressed when inserting back the battery.



Documents / Resources



[SALUS Smart Button SB600](#) [pdf] User Guide
SALUS, Smart Button, SB600