



Contents [[hide](#)]

- [1 SALUS SIR600 Smart IR AC Controller](#)
- [2 Introduction](#)
- [3 Product Compliance](#)
- [4 Important safety information](#)
- [5 Overall dimensions](#)
- [6 Button functions](#)
- [7 Box content](#)
- [8 Mounting procedure](#)
- [9 Setting up the network connection](#)
- [10 Technical data](#)
- [11 Documents / Resources](#)
 - [11.1 References](#)



SALUS SIR600 Smart IR AC Controller



Introduction

The SIR600 is an innovative remote controller designed to enhance your home comfort by allowing you to easily adjust the temperature of the air conditioning unit. Whether you're seeking a cooler environment in the summer or a warmer atmosphere in the winter, the Smart IR AC Remote Controller provides a seamless and efficient solution. Aimed at providing a more comfortable and convenient living experience. This device integrates cutting-edge technology with user-friendly features, ensuring that you can enjoy the perfect indoor climate effortlessly.

Product Compliance

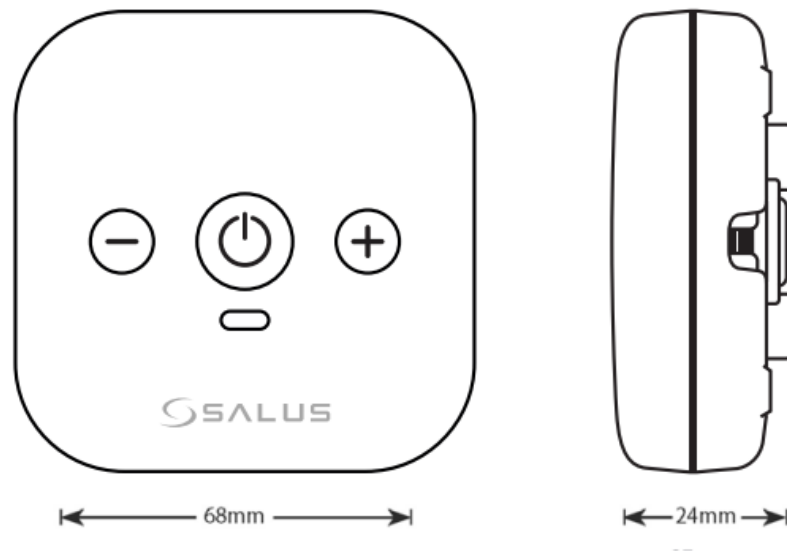
This product complies with the essential requirements and other relevant provisions of Directives 2014/53/EU and 2011/863/EU. The full text of the EU Declaration of Conformity is available at the following internet address: www.saluslegal.com.

Important safety information




The SIR600 must be installed in compliance with any of the EU's regulation and must be

stored in a safe dry area. Use the product the way it was destined to be used. The product was destined for indoor usage. To install and use the device correctly, please read all the instructions in this guide. Do not attempt to disassemble, repair, tamper with, or modify the product. Disconnect your device before cleaning it with a dry cloth.

Overall dimensions



Button functions

-  Temperature DOWN
-  PowerToggle
-  Temperature UP



Box content



SIR600



Wall Mounting
Bracket








3M Tape



USB Cable

LED status & colours

Factory reset	
Standby mode (before pairing)	
Pairing (add SIR600 to the App)	
Pairing completion	LED OFF
IR Learning	
Change setpoint temperature or mode	

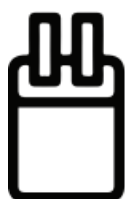


 – Solid LED light

 Blinking LED light

Setting up the device

An USB power adapter for the power supply will be required.



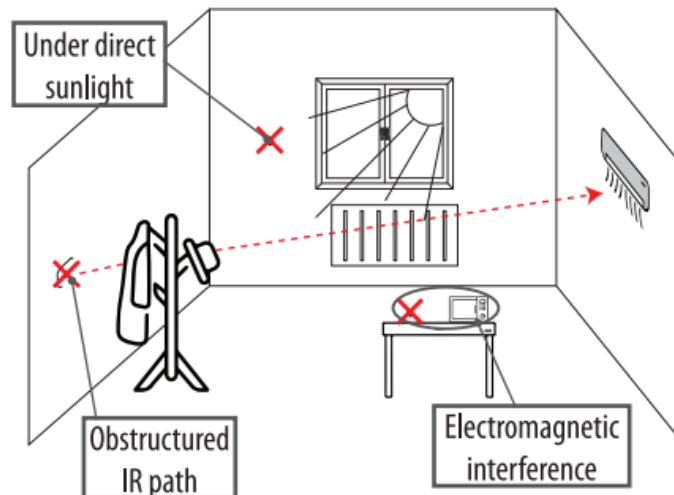
Retrieve the AC unit's IR code from the database.

The device shall be added into the Salus Smart Home system with the connection to the

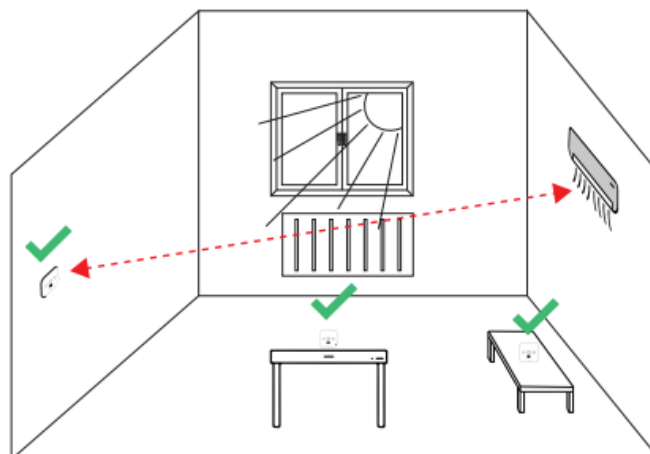
Salus UG gateway via the local WiFi network.



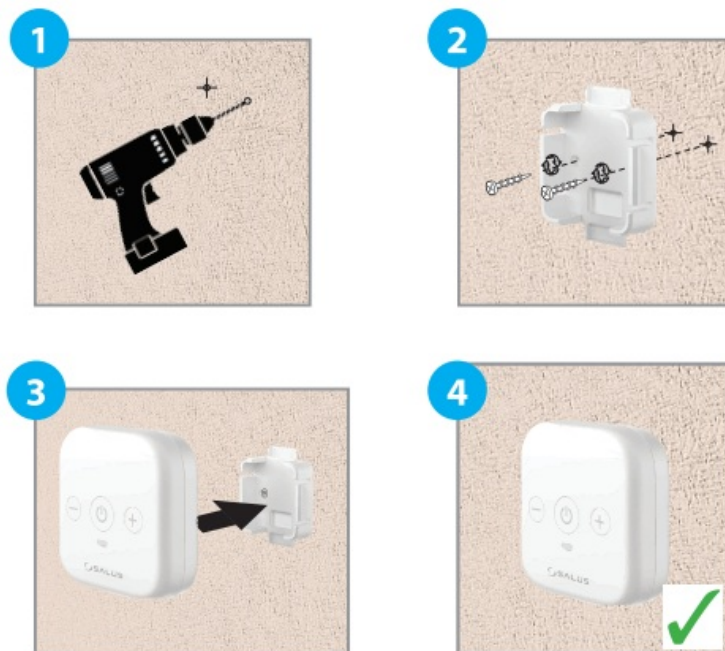
Choosing the right location



When installing your Smart IR AC Remote Controller, it's essential to position the device in a location that ensures effective communication with your air conditioner. Make sure there are no obstructions, such as furniture or walls, that could block the IR signals. Position the device within up to 10 meters of the AC unit for optimal performance. Additionally, it's best to place it away from sources of electromagnetic interference, such as microwaves and routers. Try to position it away from windows where it might be exposed to direct sunlight.



Mounting procedure



App setup and operation

Note: First make sure that you have down loaded the SALUS Premium Lite App from the Google Play or App Store. You will need to follow a few easy steps to create an account.

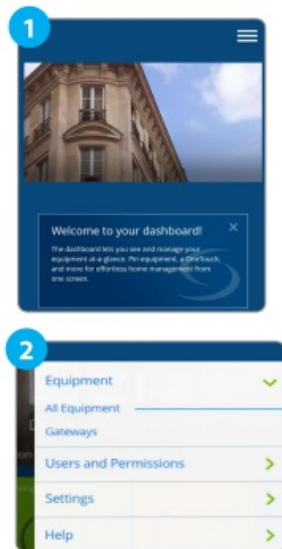


Important: SALUS Smart Home Gateway is required for the installation of SIR600. Please update the gateway to the latest software version before installing SIR600 .

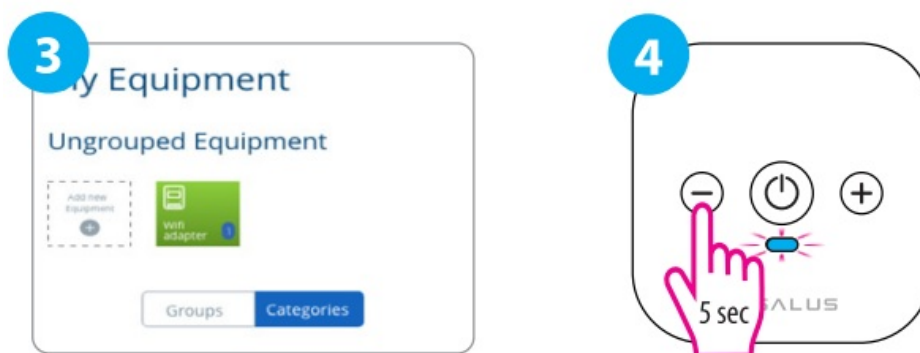



Setting Up the IR remote from the App

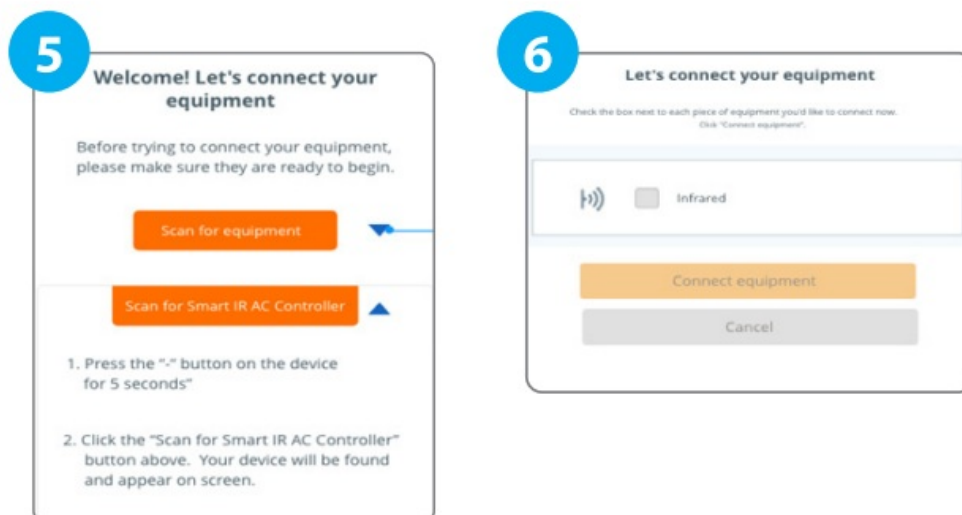
- Select the Menu command from top-right corner to open the menu.
- From Equipment category we select All Equipment.



- Here we select Add new Equipment

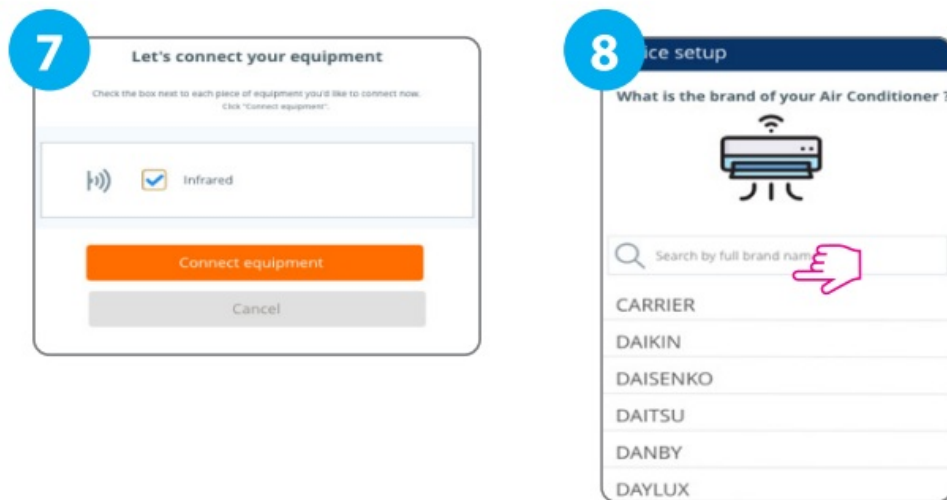


- In order to prepare the SIR600 for connection, hold the  button for 5 seconds.
- *The blue LED will blink

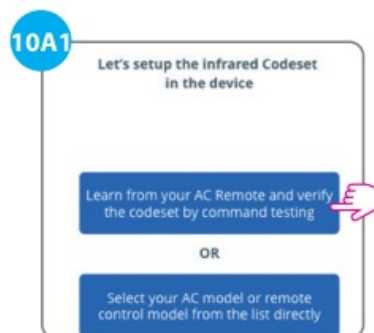
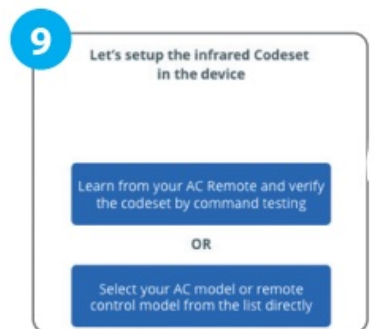


- Select Scan for Smart IRAC Controller as the connection mode.

- If the scanning was successful, the infrared device will be shown and we must select it.



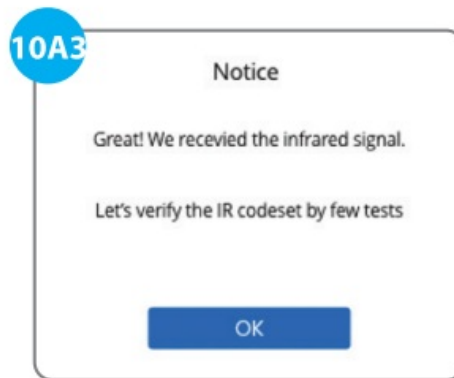
- After selecting, we will confirm by choosing Connect equipment.
- Search and select the brand of the AC device.



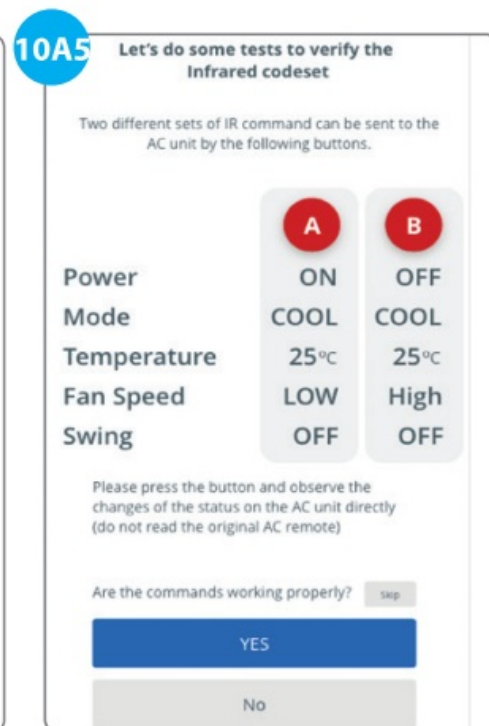
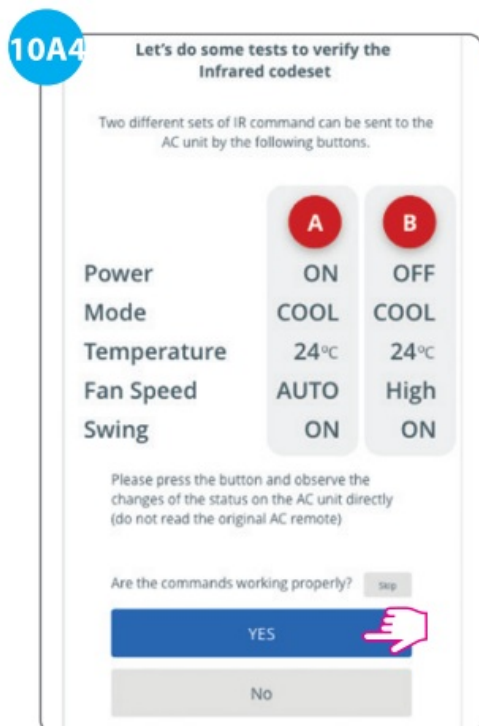
- Note: Once we have selected the AC brand, we have two options available:

Option A

- Program the device by capturing commands from your physical AC remote controller and test the commands to ensure they work correctly.



- The indications presented on the screen must be properly followed.
- If the IR signal was detected, the following notice will appear on the screen. Press OK.

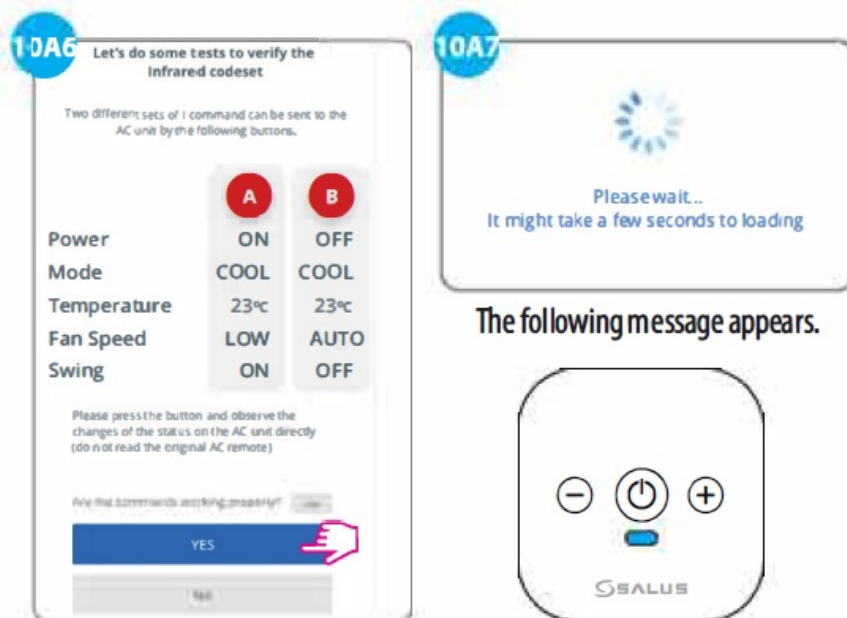


• FIRSTCODESET

Check if the commands work as shown. If they do, then select YES.

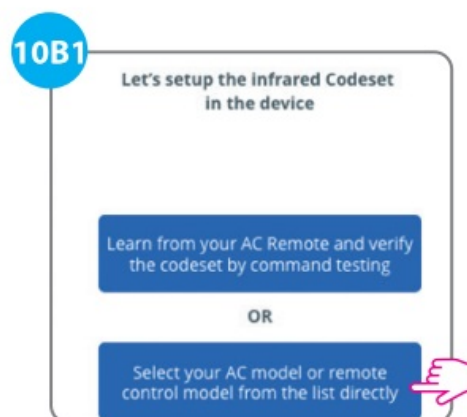
• SECOND CODESET

Check if the commands work as shown. If they do, select YES.



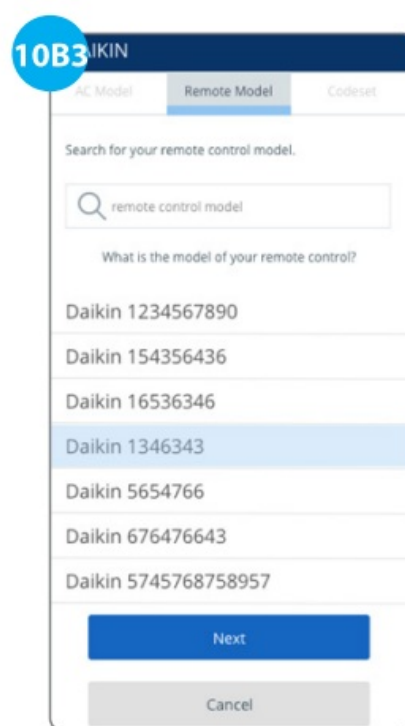
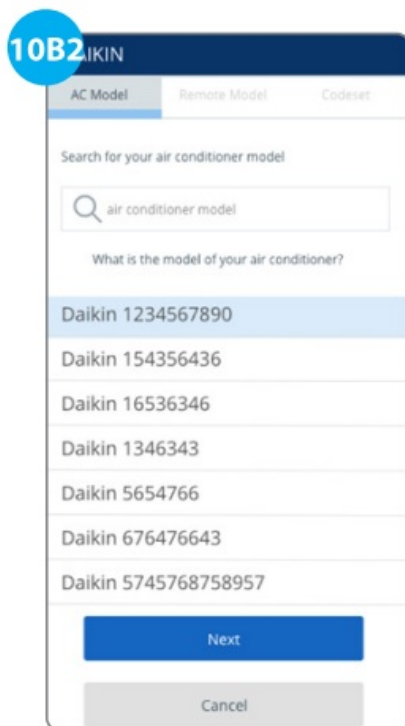
• THIRD CODESET

Check if the commands work as shown. If they do, select YES.
SIR's blue LED light will be on.

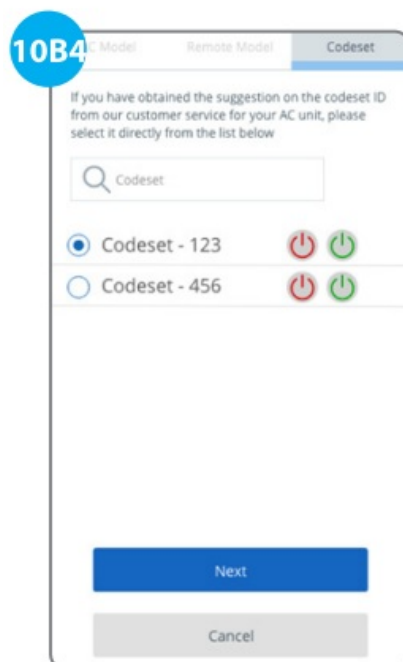


• OptionB

Program the device by selecting your AC model or remote control model from the list directly.

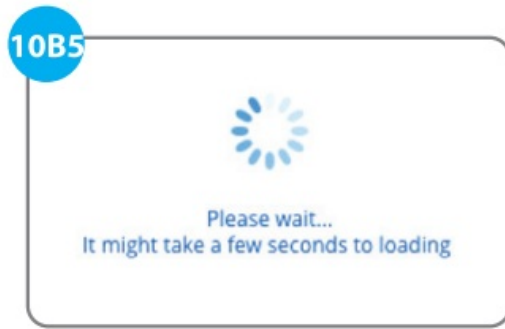


- From the AC Model list, select the model of AC device.
- Or select the Remote Model list and select the model of AC remote. After selection, select Next.



- **Please note!**

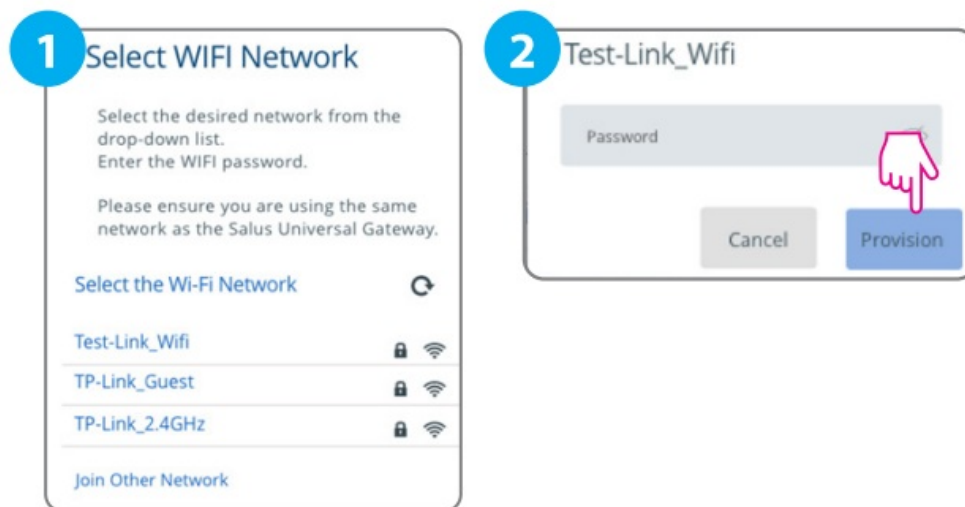
If you have obtained the suggestion on the codeset ID from our customer service for your AC unit, you can select it from the table shown in the list Codeset as shown. This would be useful if you encountered problems during the setup with the AC Model number or Remote model number.



- The following message appears.
- SIR's blue LED light will be on.

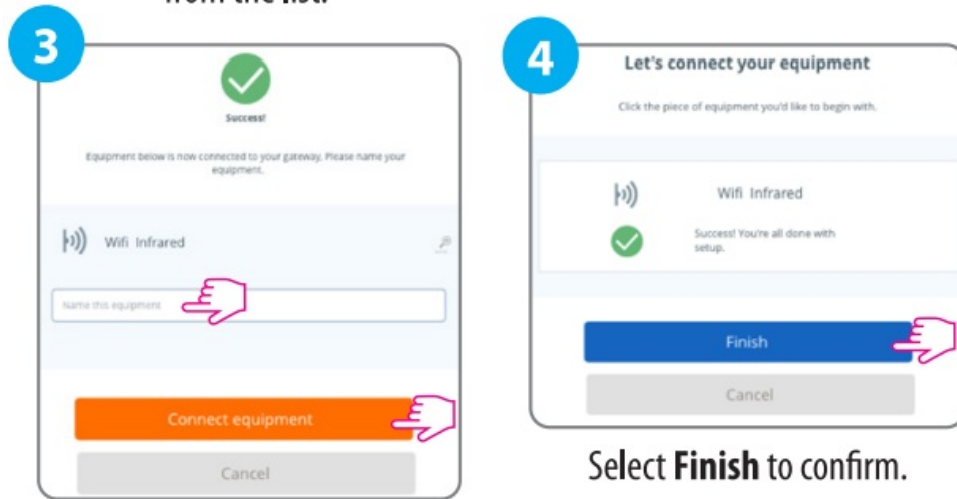
Setting up the network connection

Note: In order for the IR and gateway to communicate, the WiFi Net work must be configured. If the mobile phone and the gateway are not in the same WiFi network, the application cannot access the properties of the device. After following the previous steps it will require for the selection of the WiFi Network.



1. Select the desired network from the list.
2. Provide the password for the selected network and select Provision.
- 3.

FROM THE DSL.



Provide the password for the selected network and select Provision.

4. Select Finish to confirm.



5. Device has been added and will be shown.

Factory reset

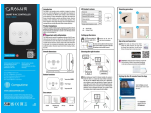
In order to realize a factory reset on your device you must press and hold the power button for 5 seconds. *Green LED light will stay ON for 5 seconds.



Technical data

Input	5Vdc 1A by USB-C
Connectivity	WiFi 2.4GHz
AC modes	Auto, Cool, Dry, Fan and Heat (Depending on the AC model)
Swing	Supports only vertical swing and up to 7 positions
Fan Speed	Auto and 1 - 7 (Depending on the AC model)
Storage temperature	-10°C to 50°C, <90% RH
Operating temperature	-0°C to 40°C, 5-90% RH, non-condensing
Dimensions (H x W x D)	68mm x 68mm x 27mm

Documents / Resources

	<p>SALUS SIR600 Smart IR AC Controller [pdf] User Guide</p> <p>SIR600 Smart IR AC Controller, SIR600, Smart IR AC Controller, IR AC Controller, AC Controller, Controller</p>
--	---

References

- [User Manual](#)

■ SALUS

◆ AC Controller, controller, IR AC Controller, SALUS, SIR600, SIR600 Smart IR AC Controller, Smart IR AC Controller

Leave a comment

Your email address will not be published. Required fields are marked *

Comment *

Name

Email

Website

☐ Save my name, email, and website in this browser for the next time I comment.

Post Comment

Search:

e.g. whirlpool wrf535swhz

Search

[Manuals+](#) | [Upload](#) | [Deep Search](#) | [Privacy Policy](#) | [@manuals.plus](#) | [YouTube](#)

This website is an independent publication and is neither affiliated with nor endorsed by any of the trademark owners. The "Bluetooth®" word mark and logos are registered trademarks owned by Bluetooth SIG, Inc. The "Wi-Fi®" word mark and logos are registered trademarks owned by the Wi-Fi Alliance. Any use of these marks on this website does not imply any affiliation with or endorsement.