



SALUS RT310i Smart Phone Controlled Programmable Thermostat Installation Guide

[Home](#) » [SALUS](#) » SALUS RT310i Smart Phone Controlled Programmable Thermostat Installation Guide 

SALUS RT310i Smart Phone Controlled Programmable Thermostat



Contents

- [1 Introduction](#)
- [2 Product Compliance](#)
- [3 Safety Information](#)
- [4 Button Functions](#)
- [5 Installation](#)
 - [5.1 Installation – Step 1](#)
 - [5.2 Installation – Step 2](#)
 - [5.3 Installation – Step 3](#)
- [6 Pairing Process](#)
- [7 Registration](#)
- [8 Device Settings Via the App](#)
- [9 General Operation](#)
 - [9.1 Schedule Mode](#)
- [10 Frost Mode](#)
- [11 Holiday Mode](#)
- [12 Location Mode](#)
- [13 Customer Support](#)
- [14 Documents / Resources](#)
 - [14.1 References](#)
- [15 Related Posts](#)

Introduction

The SALUS RT310i is a Smart phone controlled programmable thermostat. The RT310i thermostat will switch your heating system on or off, as needed, in accordance with the temperature set by you, locally on the device or remotely using the dedicated app.

Product Compliance

This product complies with EMC 2014/30/EU, LVD 2014/35/EU, RED 2014/53/EU and RoHS 2011/65/EU. Full

text of the EU Declaration of Conformity on www.saluslegal.com  868.0 868.6MHz; <13dBm



Safety Information

Use in accordance with the regulations. Indoor use only. Keep your equipment completely dry. Disconnect your equipment before cleaning it with a dry towel.

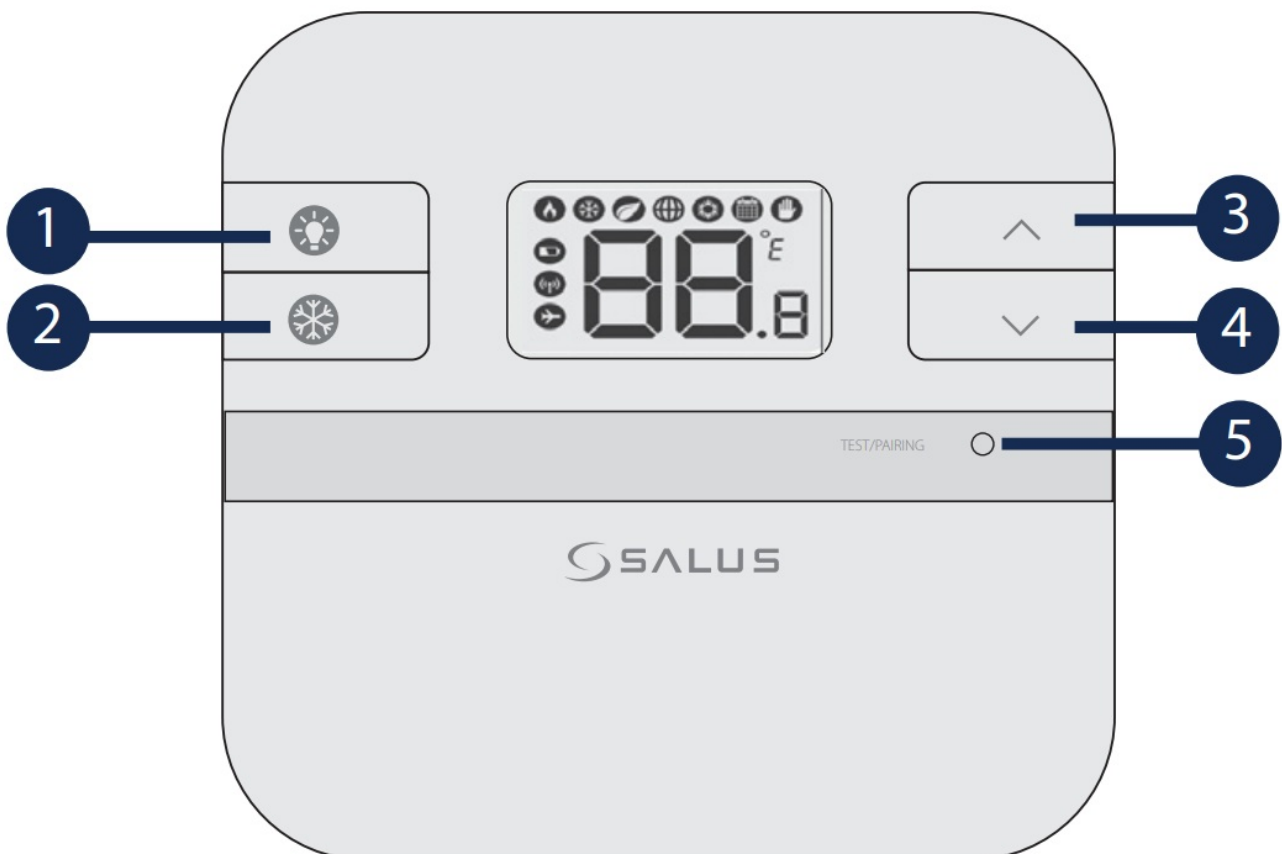


Always isolate the AC Mains supply before installing or working on any components that require 230 VAC 50Hz supply.



The thermostat is pre-set from factory in Manual Mode allowing you to set the desired temperature. This is the default working mode if not connected to the internet during installation.

Button Functions



- ❶ Turn on the LCD backlight
- ❷ Turn On/Off the Frost Mode
- ❸ Increase button

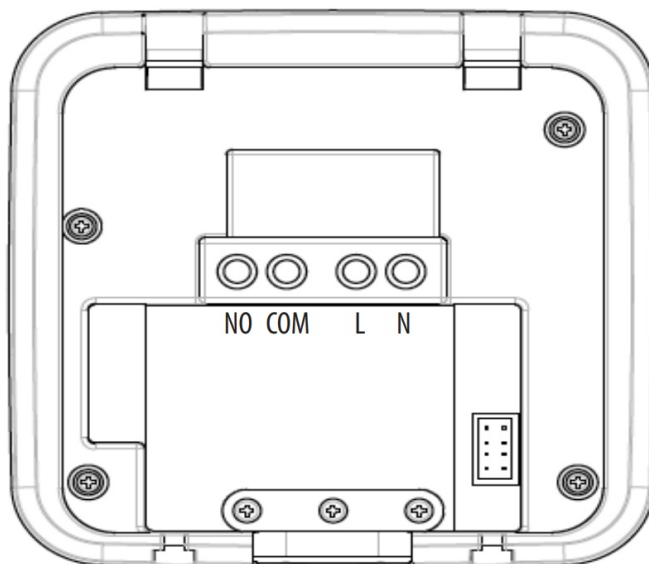
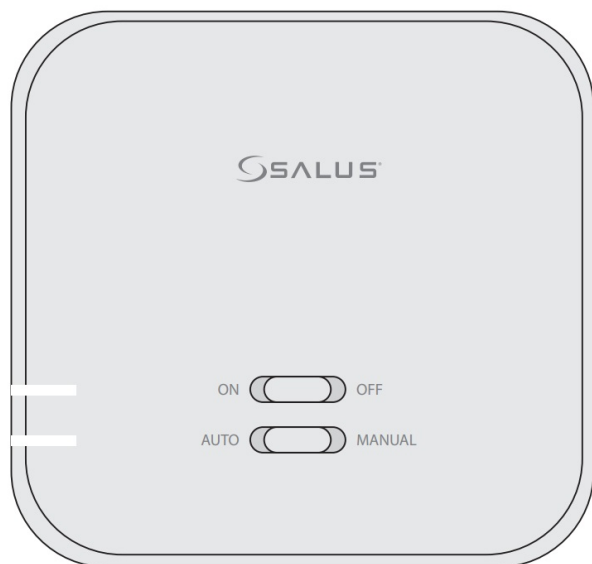
- ④ Decrease button
- ⑤ Test Mode/ Pairing Mode

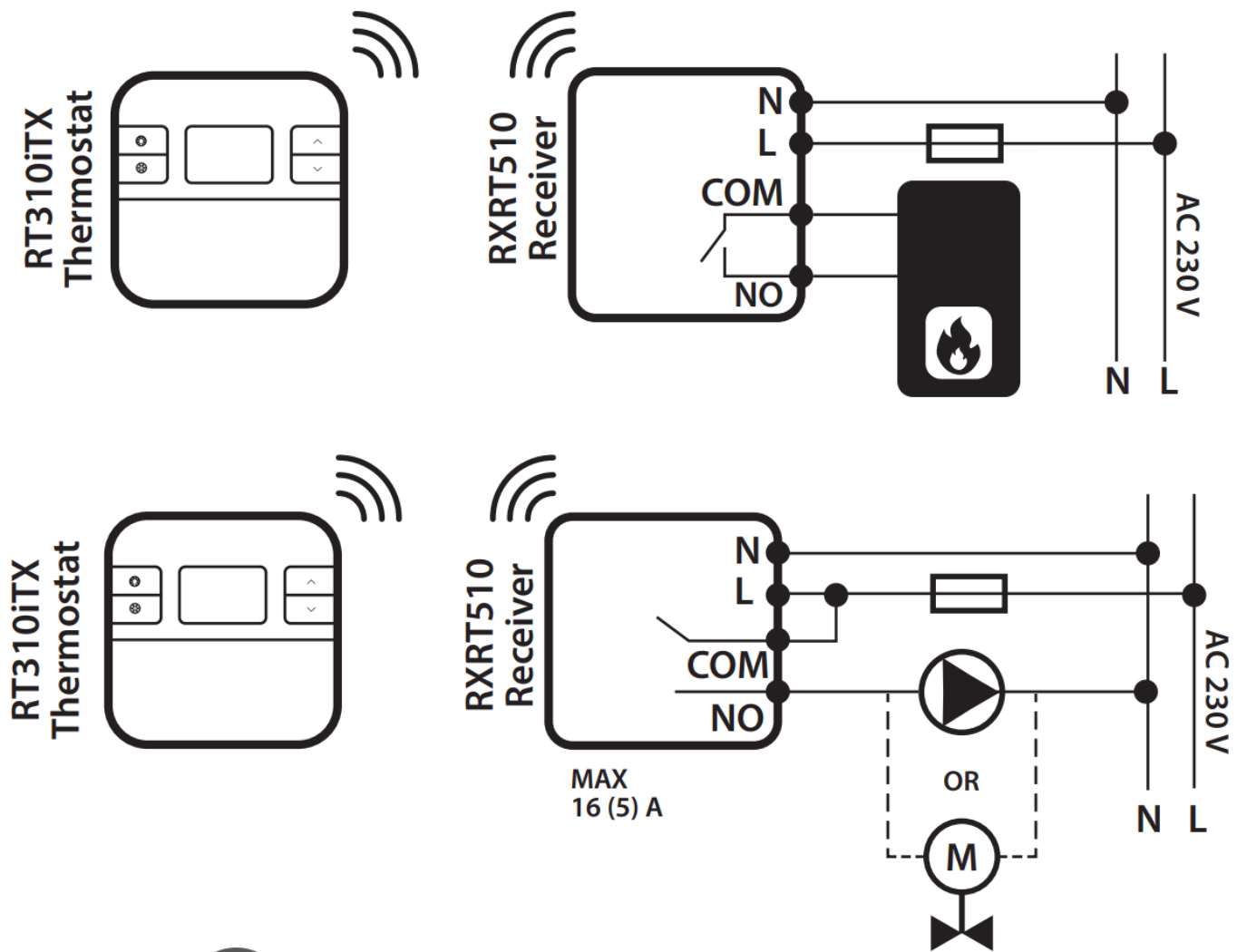
Installation

Installation – Step 1

RXRT510

Wire up the receiver according to the diagram and switch it on before inserting the batteries into the thermostat.





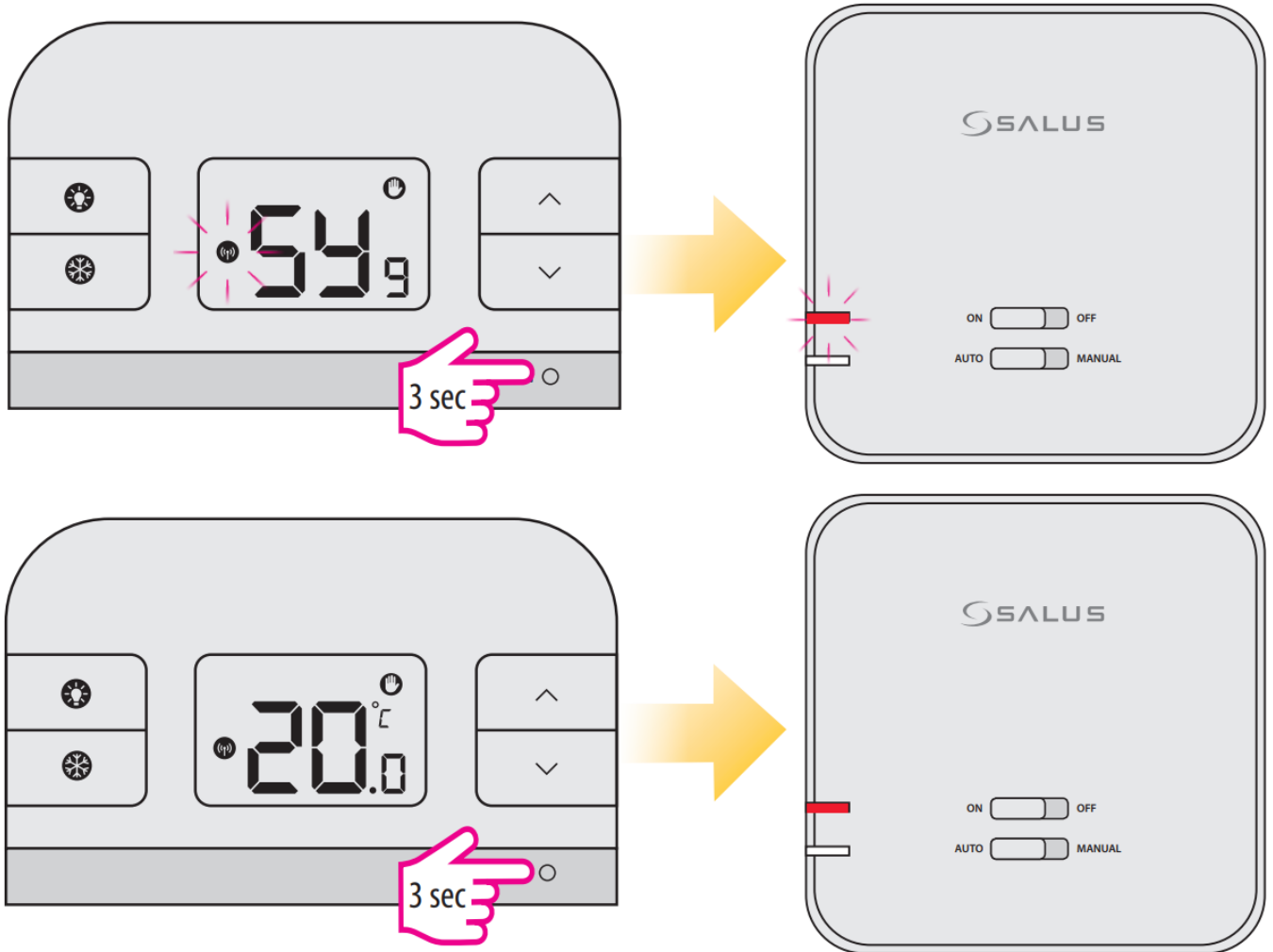
The thermostat and the receiver are pre-paired from factory.

Installation – Step 2

RT310iTX

Before inserting the batteries, please make a note of your SRT number and register your device on the app.

power supply and wait for the red LED to light steadily. Next switch to the OFF position and again to ON position quickly. The red flashing LED will confirm entering the pairing mode.



Registration


Download the RT310i App, create an account and register your device. Follow the on screen instructions to complete all the steps.

1





2



WELCOME

Email

Password

[LOG IN](#)

[FORGOTTEN PASSWORD?](#)

[DEMO](#) [REGISTER](#)

3

CREATE ACCOUNT

1 2 3 4

Email address ✓

Confirm email address ✓

Password (should be at least 6 characters) ✓

Confirm Password ✓

[NEXT](#)

4

CONFIRM ACCOUNT

1 2 3 4

We have sent you an email to confirm your registration. Enter the code from the email below:

✓

[SUBMIT](#)

5

ADD A DEVICE

1 2 3 4

Add a device code

✓ - 00 ✓

Name this device

✓

[VIEW TERMS OF USE](#)

☒ I agree to terms of use

[ADD ANOTHER](#) [SUBMIT](#)

6

MANAGE DEVICES

RT310i

☒

SRT00000000

Firmware version: 10.7 + 1.5.1.8

[UPDATE FIRMWARE](#)

[DELETE](#) [EDIT](#)

[+](#)

7

RT310i



Desired Temp.

14.0 °C

Current temp.

23.5 °C

[SCHEDULE](#) [MANUAL](#) [OFF](#)

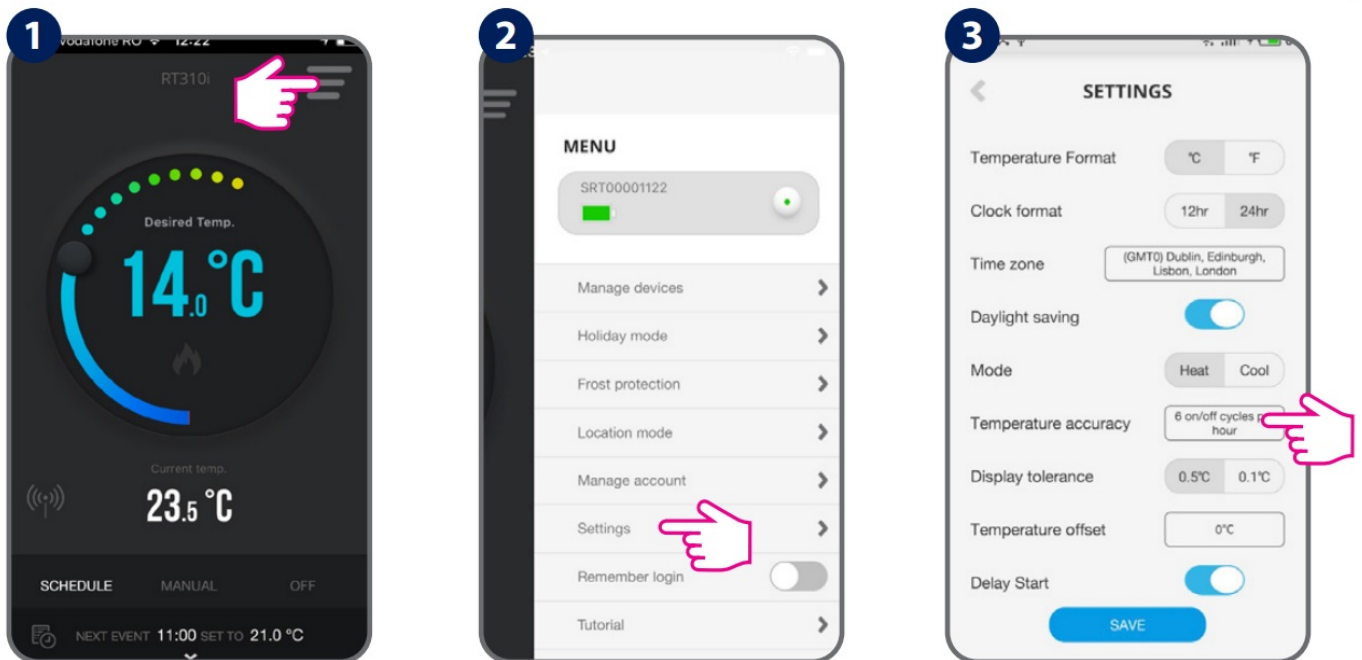
 NEXT EVENT 11:00 SET TO 21.0 °C

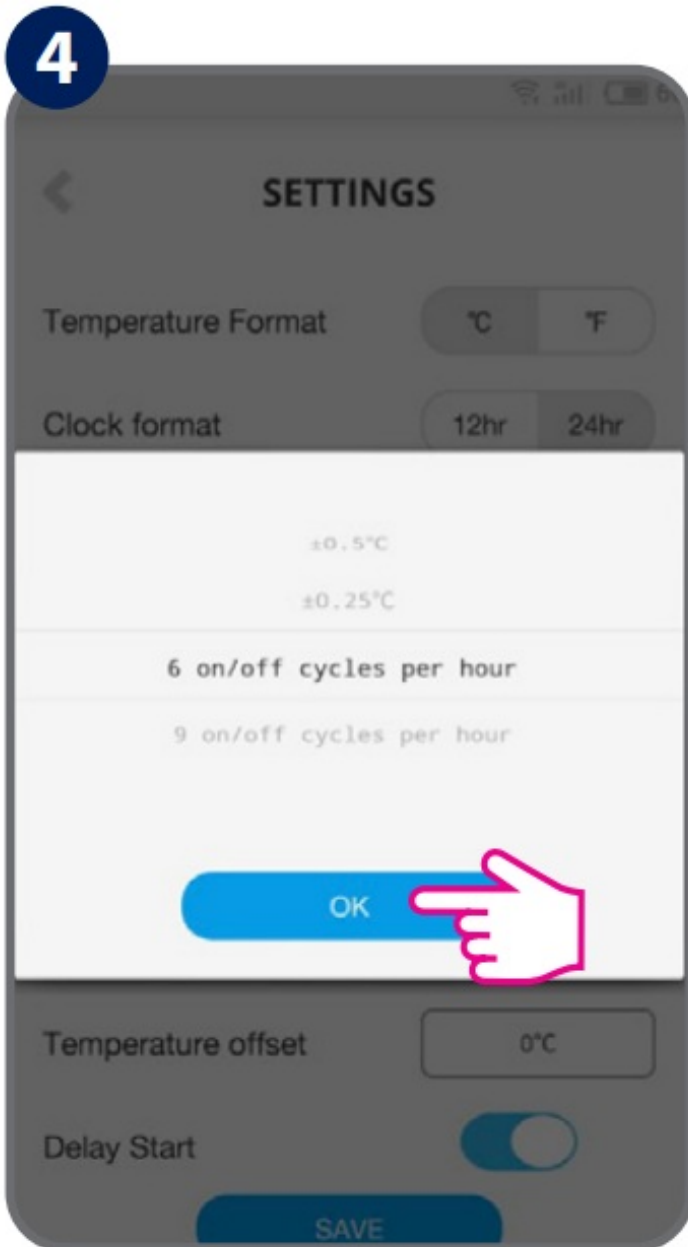
Device Settings Via the App

Features available only on the App:

- Temperature format
- Clock format
- Time zone
- Daylight Saving Time
- Heating or Cooling Mode
- Temperature accuracy
- Display tolerance
- Temperature offset
- Schedule/Manual/Off Mode
- Holiday Mode
- Location Mode
- Delay Start

Customize your settings according to your preferences. Time and date will be set automatically once connected to the internet. Set the mode (heat/cool). Heat Mode is used for controlling a heating boiler. Cool Mode is used for controlling a cooling device. In Cool Mode, you can choose temperature accuracy between ± 0.5 °C and ± 0.25 °C. In Heat Mode, you can select as well between a lower comfort level (6 on/off cycles per hour) and a higher comfort level (9 on/off cycles per hour). Also, in order to calibrate the temperature, you can offset it using a ± 3 °C range.

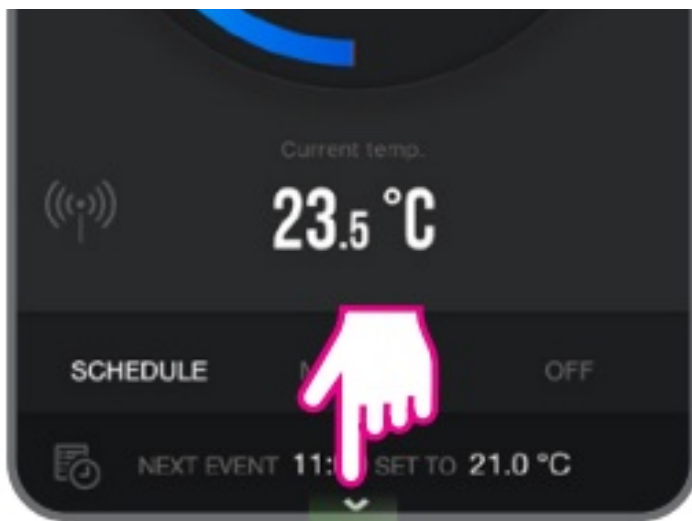




General Operation

There are 3 program settings. 1. Schedule (7 days, 5-2 days and 24 hours), 2. Manual and 3. Off.

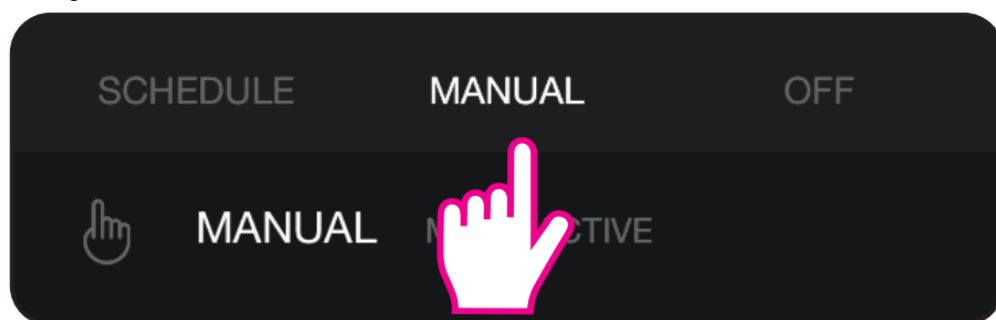




Schedule Mode

All	5/2	Individual
Set one schedule for the entire week (each day the same)	Set a schedule for the working days and for the weekend	Set a daily schedule (each day different)

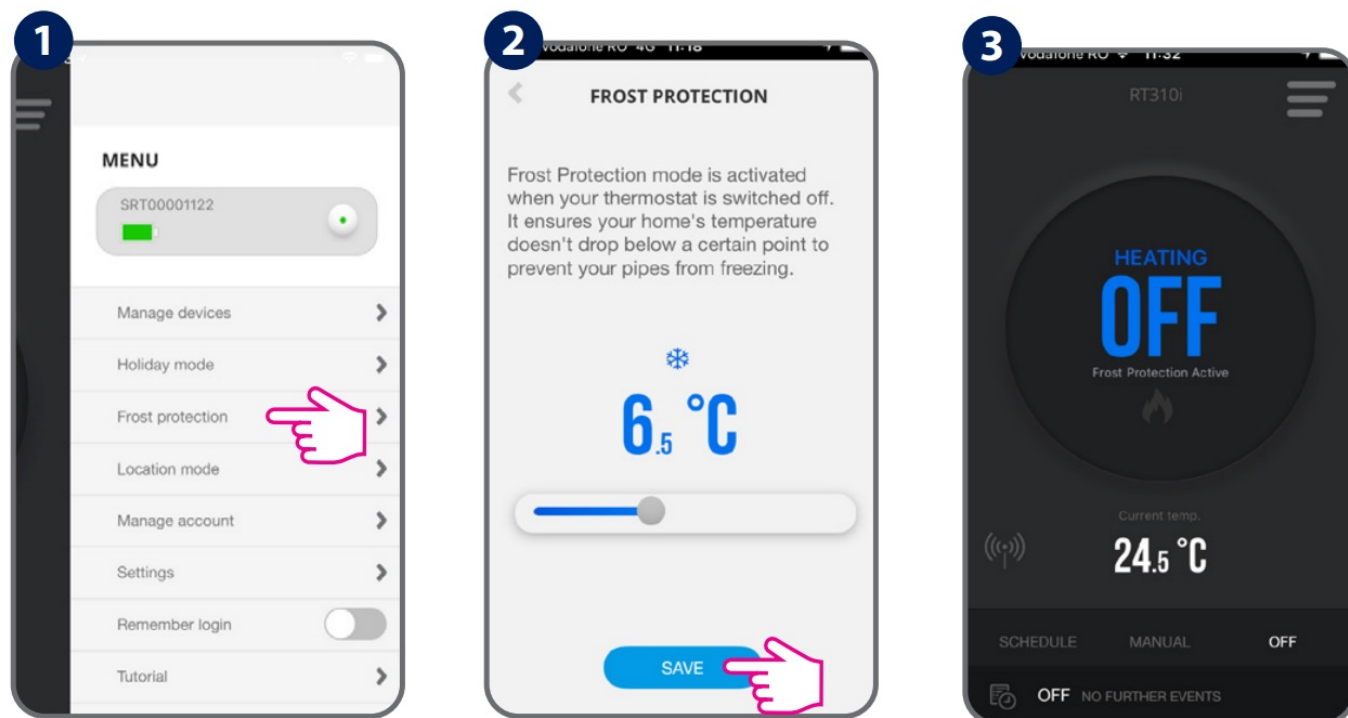
In Manual Mode you will permanently override the schedule. Exit Manual Mode by switching to Schedule or turning off the thermostat.



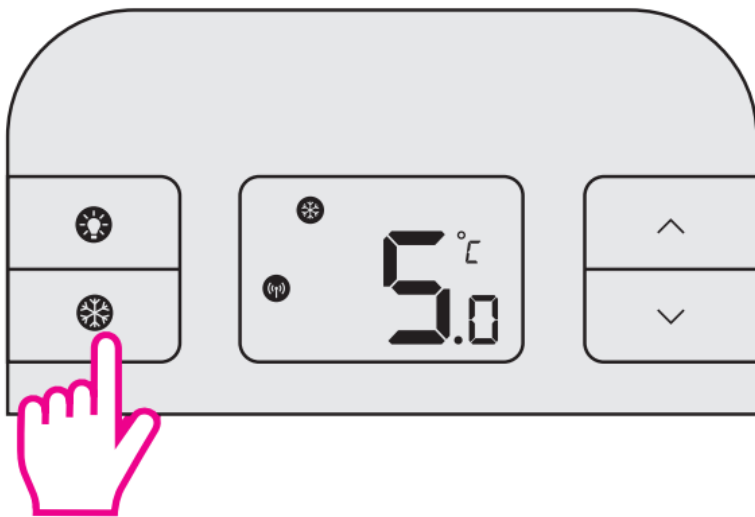
If the internet connection is lost the thermostat will follow the schedule. If it was in Frost Mode you can disable the Frost function from the device and continue following the schedule (see Frost Mode section of the guide).

Frost Mode

Frost protection temperature can be set between 5.0°C and 9.0°C. To turn on Frost Mode activate Off Mode or Holiday Mode via the App

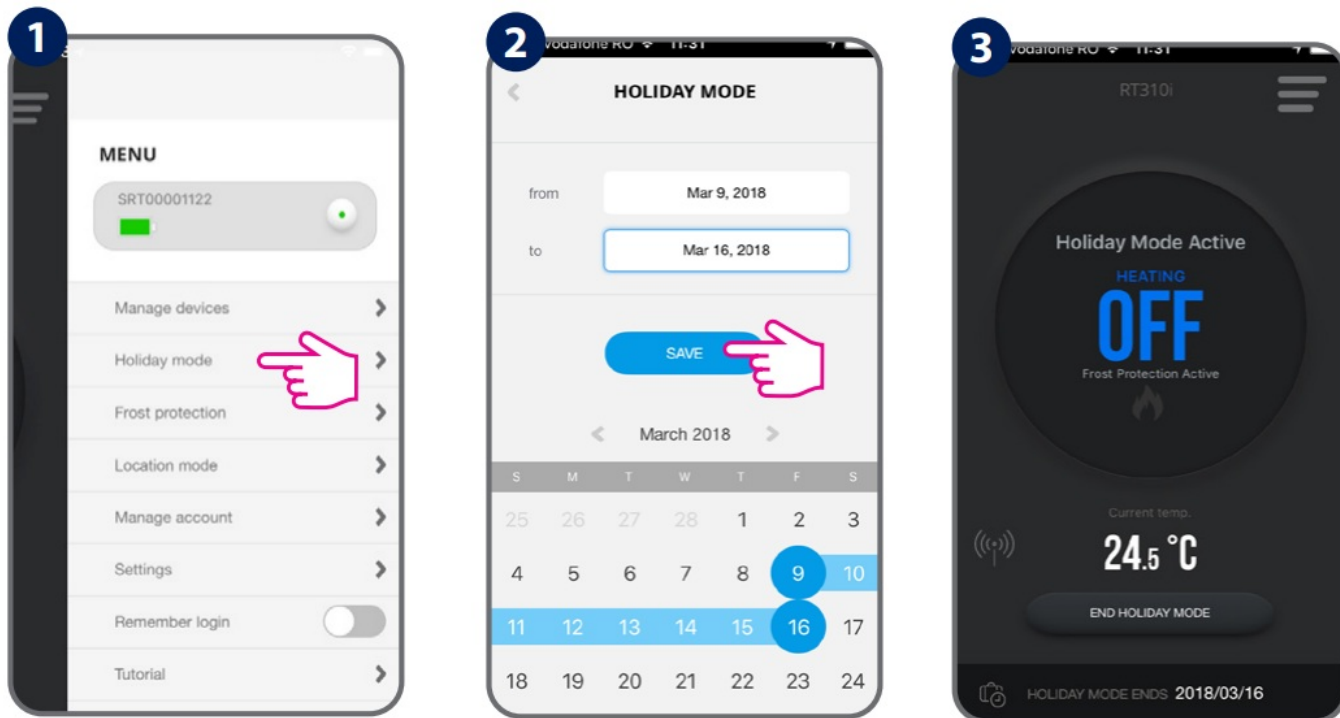


Frost Mode can also be de-activated or activated on the device, by pressing the frost button once.



Holiday Mode

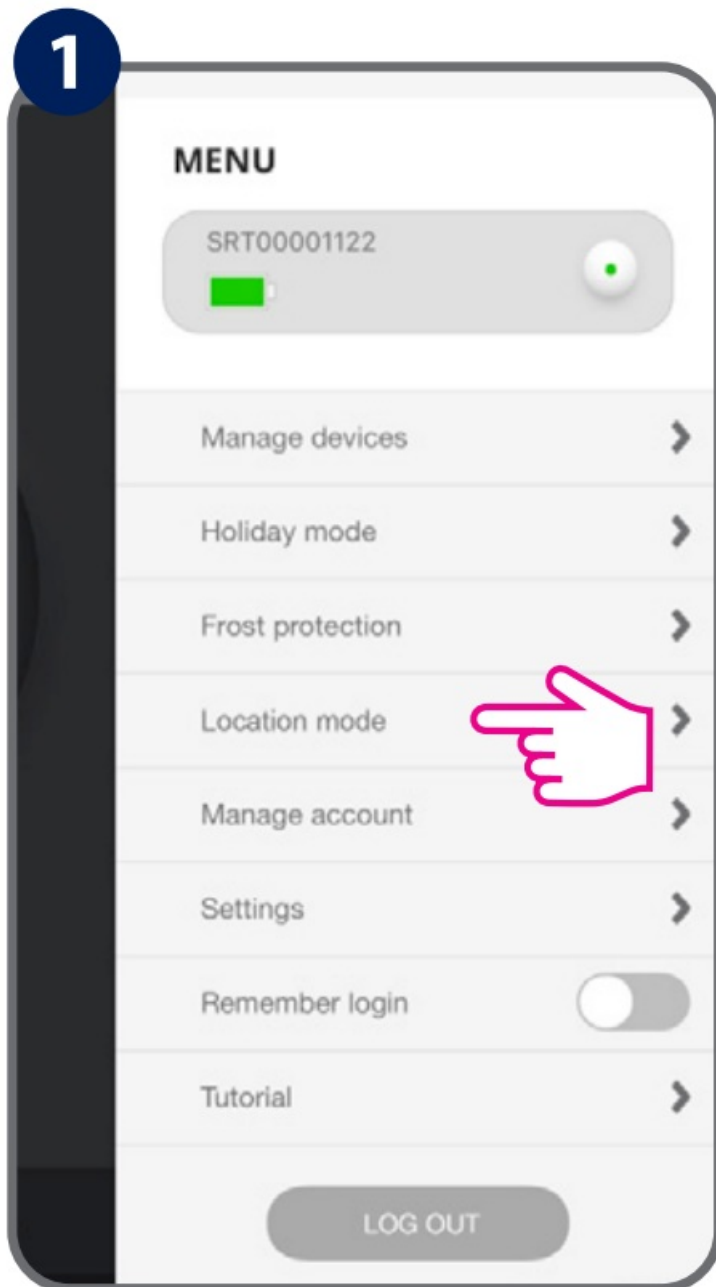
Select the period for this function. Frost Mode temperature will be activated during this period.



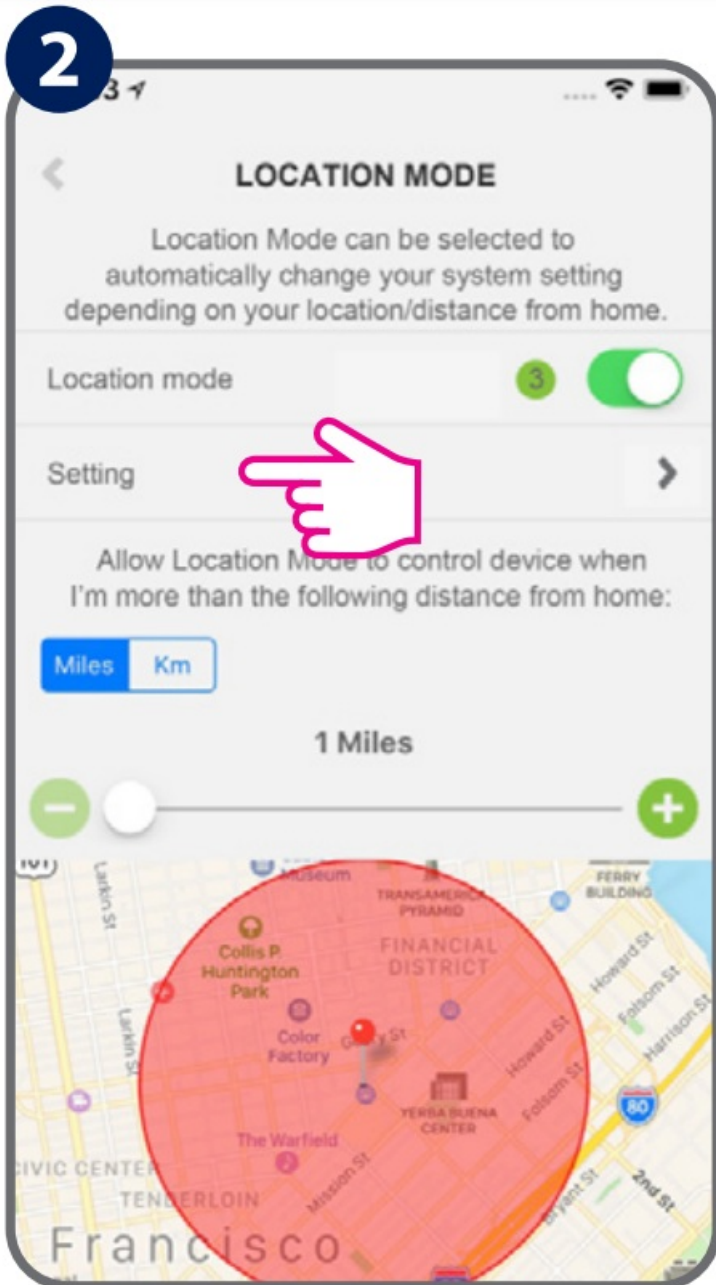
After the Holiday Mode ends, the thermostat will follow the previous setting (Schedule, Manual or Off.)

Location Mode

Location Mode is an automated task designed to change your heating settings according to the current distance from your home



If Location Mode is enabled, you can drag the slider in order to set the distance limit. Go to “Setting” to manage your settings.



Select your devices and the actions you want to take place when you leave and return home. Choose “SAVE” to confirm. Your devices will be automatically adjusted to the settings you make.

3

LOCATION MODE SETTING

Devices

- ☒ Device Name
- ☒ Device Name
- ☐ Device Name

When outside location Run Now

- ☒ SCHEDULE
- ☐ MANUAL
- ☐ OFF

When inside location Run Now

- ☒ SCHEDULE
- ☐ MANUAL
- ☐ PREVIOUS MODE

Phones

1 2 3 4 5 6 7 8

SAVE

Customer Support

Head Office:
 SALUS Controls plc
 SALUS House
 Dodworth Business Park South,
 Winby Road, Dodworth,
 Barnsley S75 3SP, UK.
 T: +44 (0) 1226 323961
 E: sales@salus-tech.com
 E: techsupport@salus-tech.com
 FR/ NL / DE:
support@salus-controls.de
 tel: +49 6108 8258515

SALUS Controls is a member of the Computime Group
 Maintaining a policy of continuous product development SALUS Controls plc reserve the right to change specification, design and materials of products listed in this brochure without prior notice.

For PDF Installation guide please go to

www.salus-manuals.com

Issue date: August 2018



Documents / Resources



[SALUS RT310i Smart Phone Controlled Programmable Thermostat](#) [pdf] Installation Guide
RT310i, Smart Phone Controlled Programmable Thermostat, RT310i Smart Phone Controlled
Programmable Thermostat, Phone Controlled Programmable Thermostat, Controlled Program
mable Thermostat, Programmable Thermostat, Thermostat

References

- [Choose your country – Salus](#)
- [salus-manuals.com](#)
- [Salus – Smart Technology for your comfort](#)