



SALUS PS600 Temperature Sensor User Guide

[Home](#) » [SALUS](#) » SALUS PS600 Temperature Sensor User Guide 


SALUS PS600 Temperature Sensor



Contents

- 1 Introduction
- 2 Product Compliance
- 3 Safety Information
- 4 Installation
- 5 Location
- 6 Connecting to the network
- 7 OneTouch
- 8 Technical specifications
- 9 Reset
- 10 Documents / Resources
 - 10.1 References
- 11 Related Posts

Introduction

The PS600 temperature sensor measures and reports the measured temperature periodically. The measured temperatures can be used in a variety of ways depending on the system configuration: by association with cooling / heating systems, lighting systems or with the products connected to smart outlets, water valves, etc. The sensor measuring range is an important feature and it offers the possibility to use the product to send notifications related to temperature values, to create safety methods by associating with other devices, or to collect data for good analysis. operation of heating / cooling systems. This product should be used in conjunction with the Universal Gateway (UG600 / UGE600) and the Salus Smart Home application 

Product Compliance

This product complies with the essential requirements and other relevant provisions of Directives 2014/53/EU and 2011/65/EU. The full text of the EU Declaration of Conformity is available at the following internet address:

www.saluslegal.com



2405-2480MHz; <14dBm



Safety Information

Use in accordance to national and EU regulations. Use the device as intended, keeping it in dry condition. Product for indoor use only.

Installation must be carried out by a qualified person in accordance to national and EU regulations.

Installation

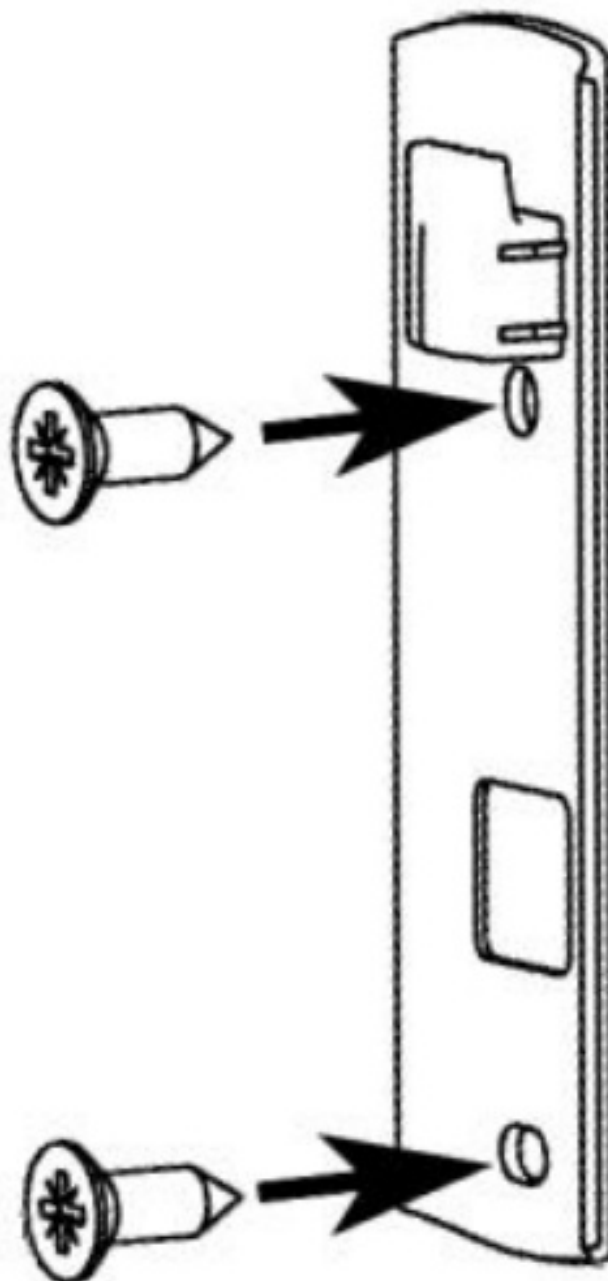
Select a location for the sensor wall installation, if you install the sensor vertically, point the metal bracket down the mounting bracket. Horizontal installation is also possible.



For the most accurate temperature reading, the sensor must be installed in an open space, away from drafts.

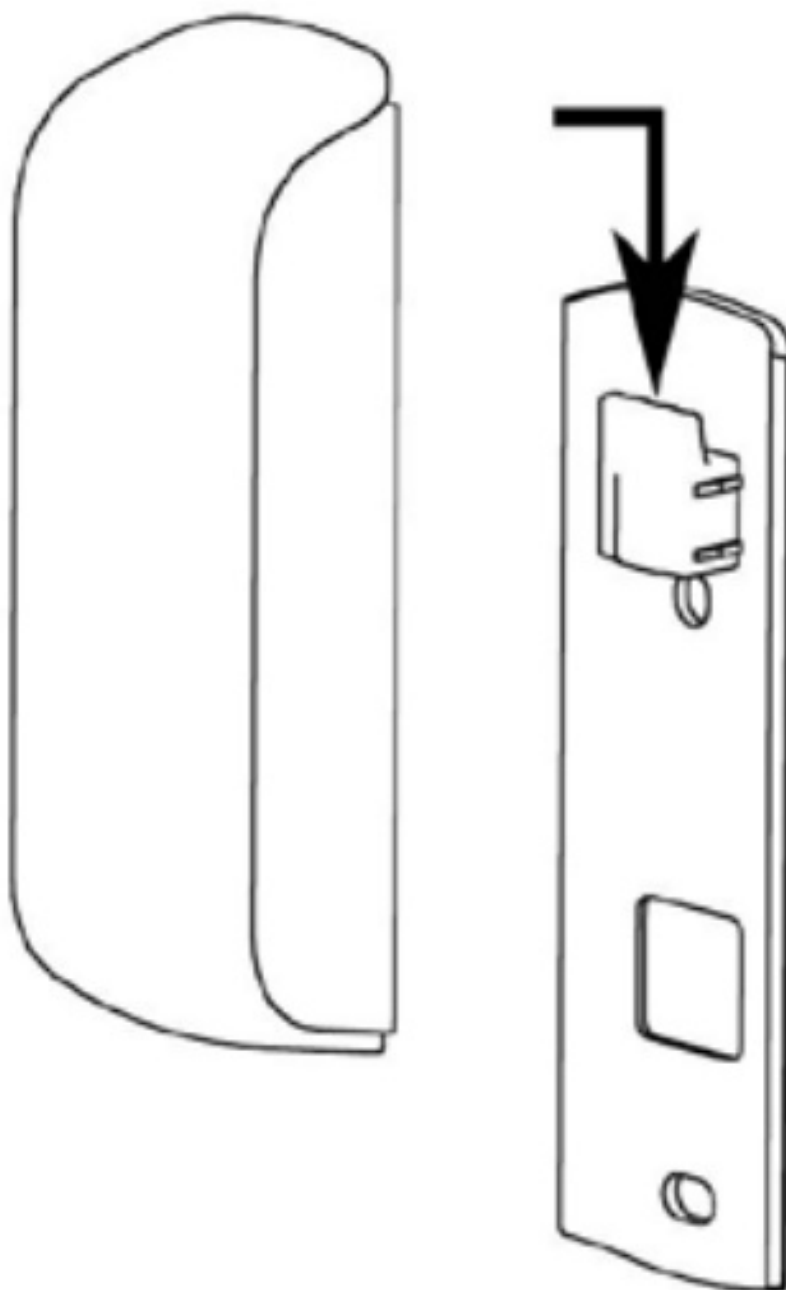
1. Position the wall bracket and secure it using the supplied screws.

1



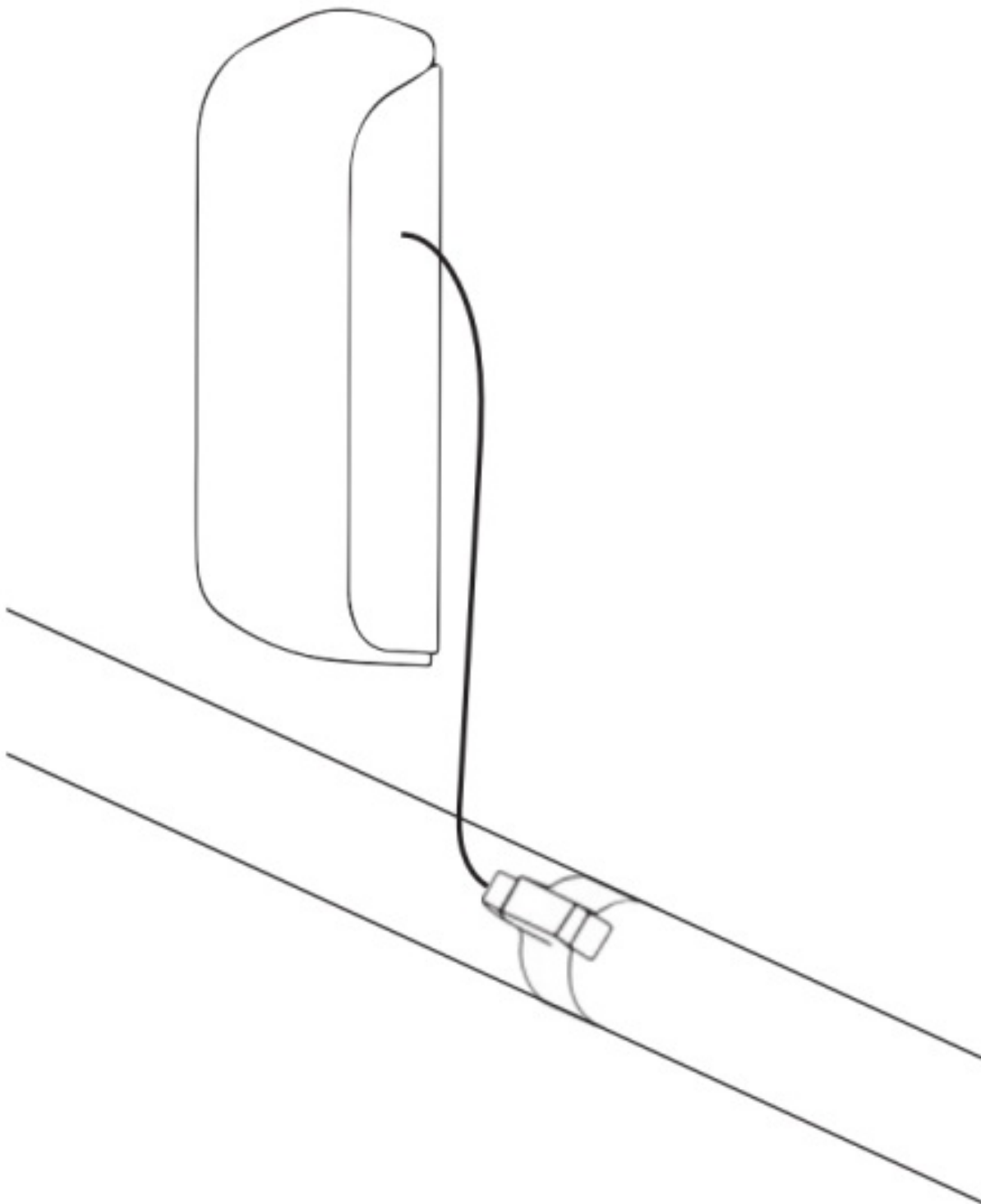
2. Place the sensor above the hook and slide it into position.

2



Location

The temperature sensor is designed to be mounted on Ø 15 mm or Ø 18 mm on the metal/plastic pipe. For the most accurate temperature reading, the sensor must be installed in an open space, away from drafts.

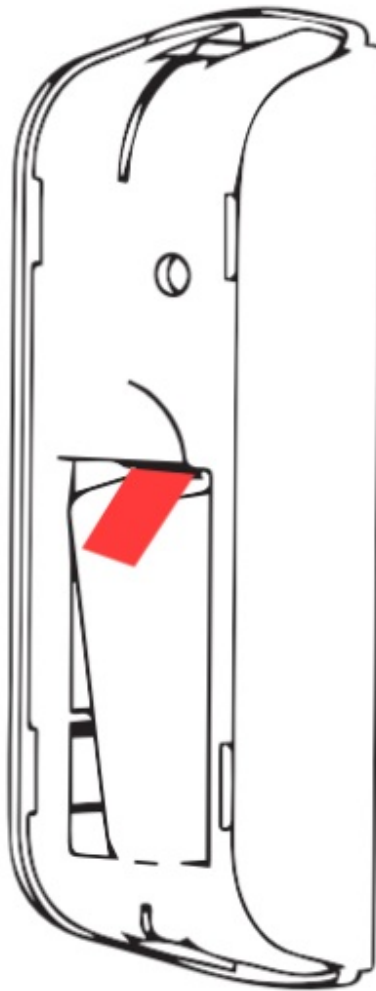


Additionally, the PS600 temperature sensor can be used in specific applications, such as reading the temperature value from a boiler shelf. In this case, remove the holding copper clamp and use only the body of the sensor.

LED-SIGNAL	Descriptions
Solid at startup	Instalation, check the rese
3 flashes-pause, 3 flashes-pause	Network search

Connecting to thenetwork

1



2



SALUS
Smart Home



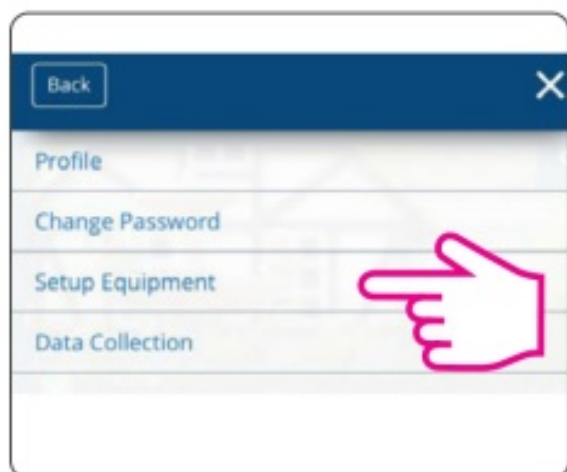
GET IT ON
Google Play



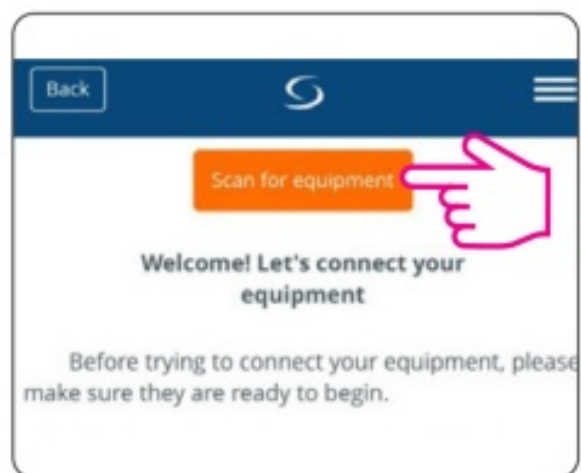
Download on the
App Store

Remove the electrical tape, if you have not already done so, to begin the synchronization process

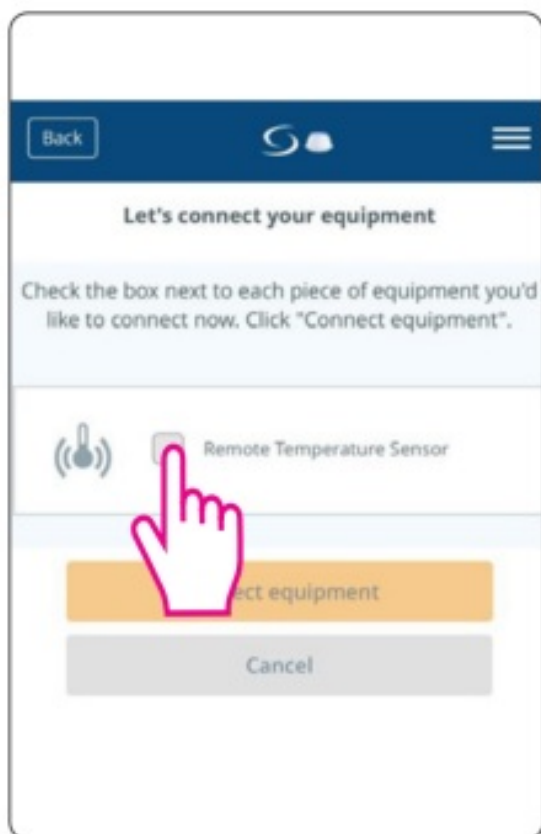
5



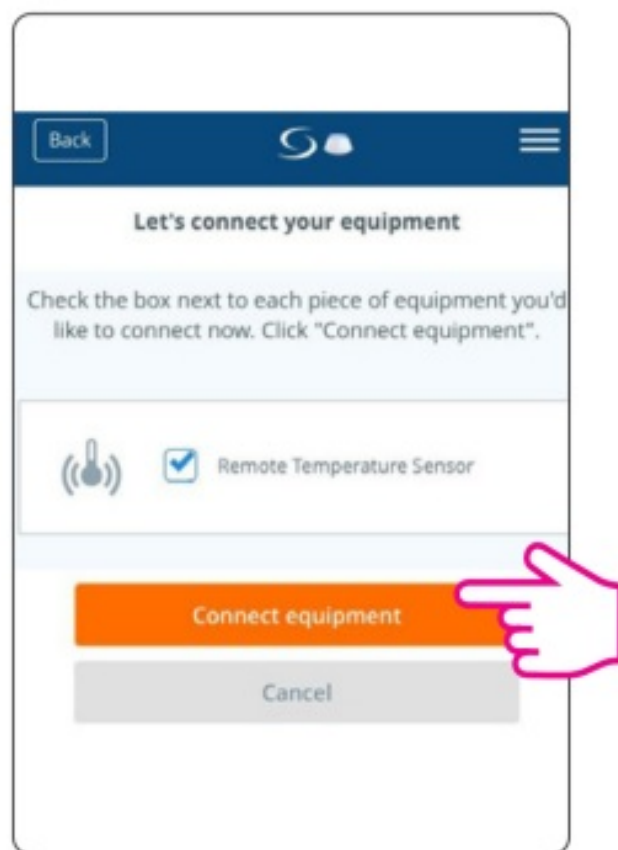
6



7



8



9

Back

Success!

Equipment below is now connected to your gateway.
Please name your equipment.

PS600 Remote Temperature Sensor

Name this equipment

Next

10

Back

Let's set up your equipment

Click the piece of equipment you'd like to begin with.

Remote Temperature Sensor 2

Please click device name to setup

Finish

Cancel

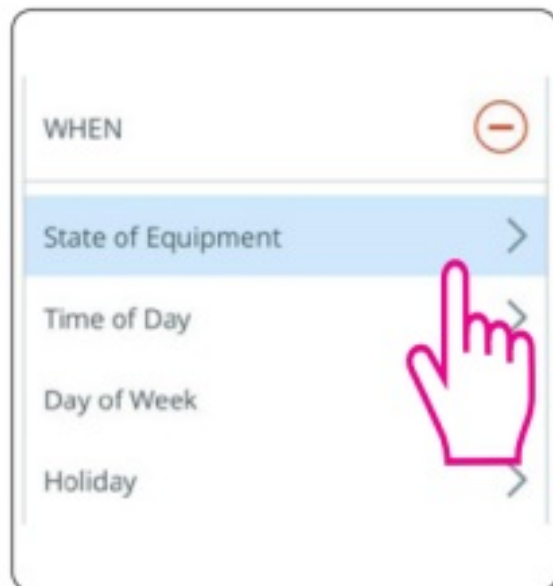
OneTouch

The OneTouch feature allows you to set operating rules for your device. For the temperature sensor, for example, you can activate email alerts when the sensor reads temperature values below those set by you.

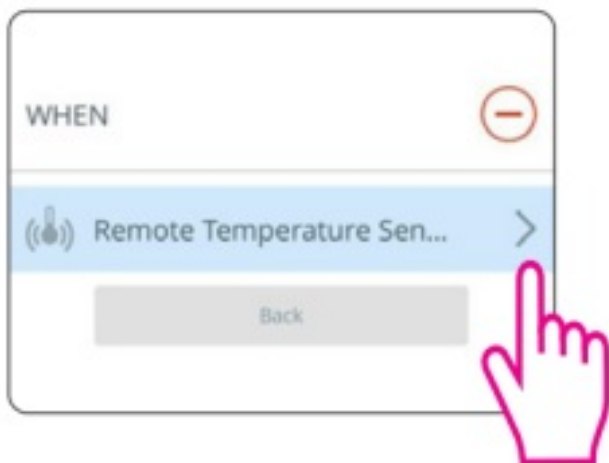
1



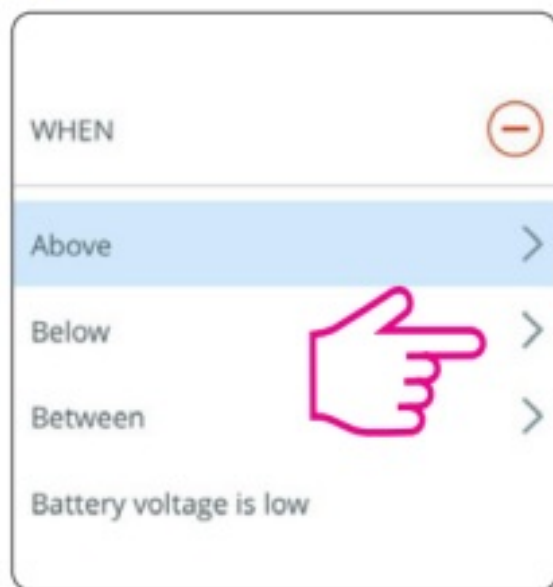
2



3



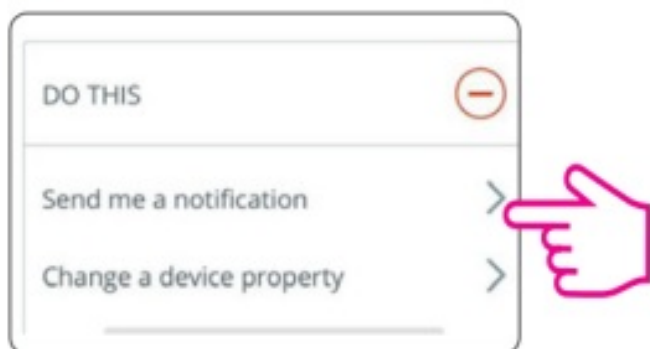
4



5



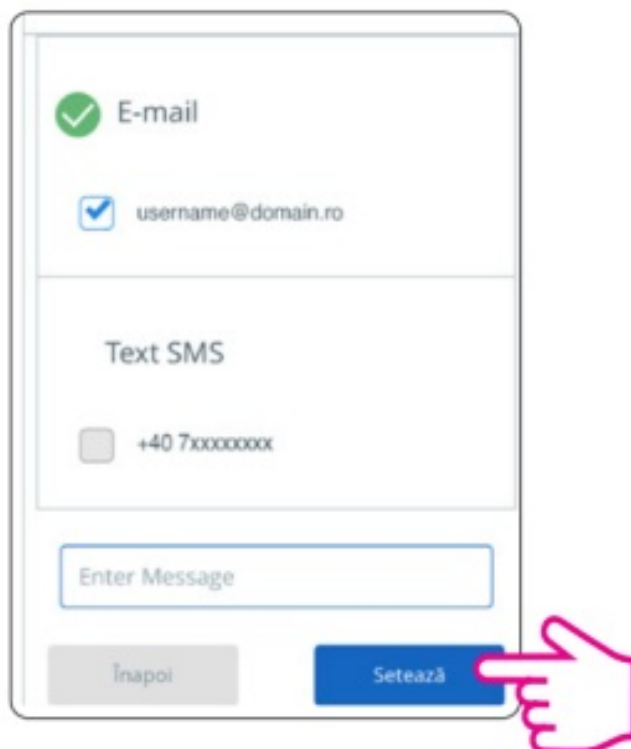
7



6



8



9



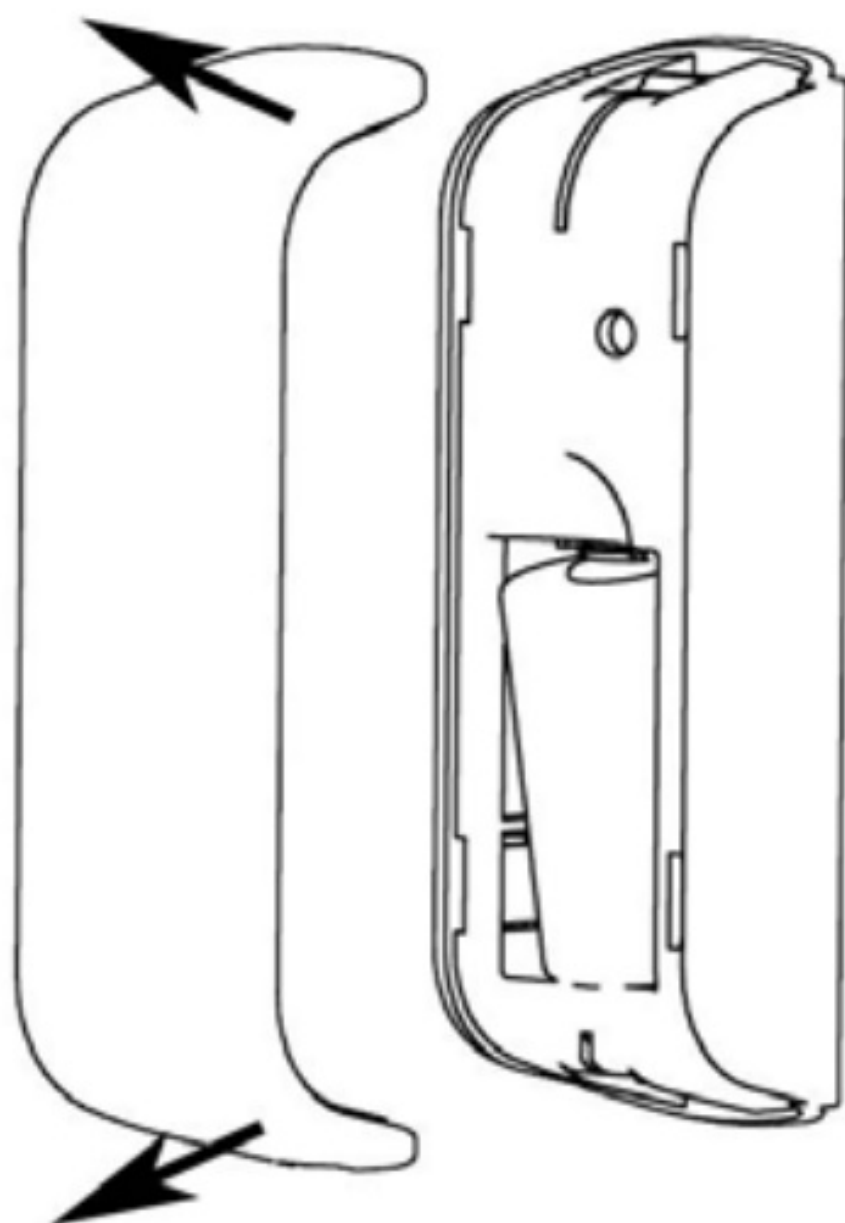
Technical specifications

Power Supply	CR2 lithium battery
Temperature reading interval	-50°C – 100°C
Cable length [mm]	470
Dimensions [mm]	73.5 x 24.7 x 20

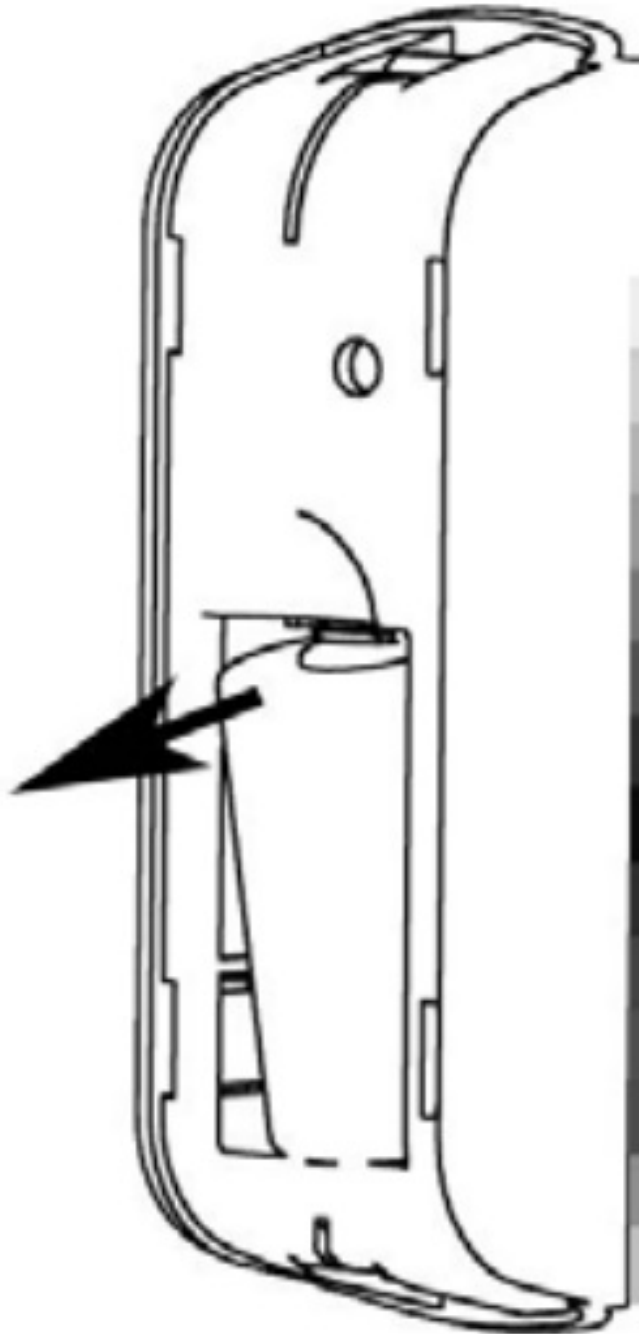
Reset

Remove the front cover.

1

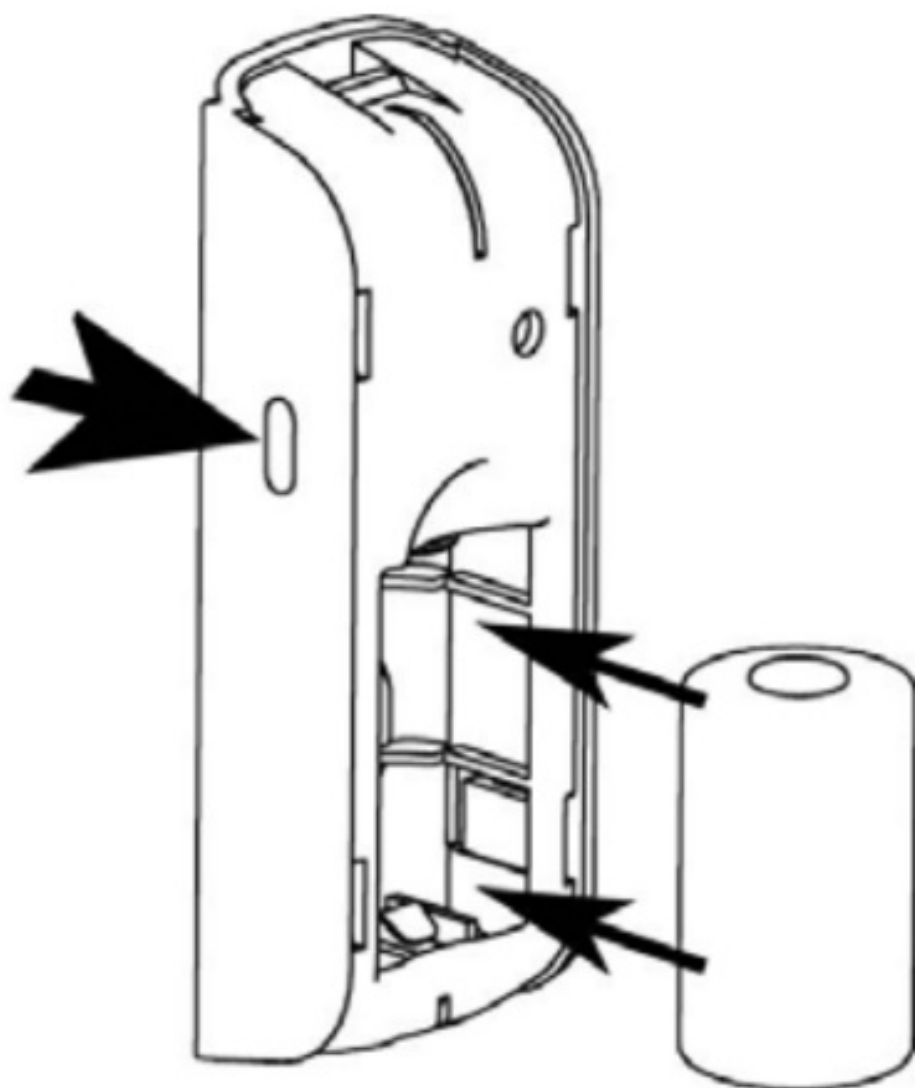


2

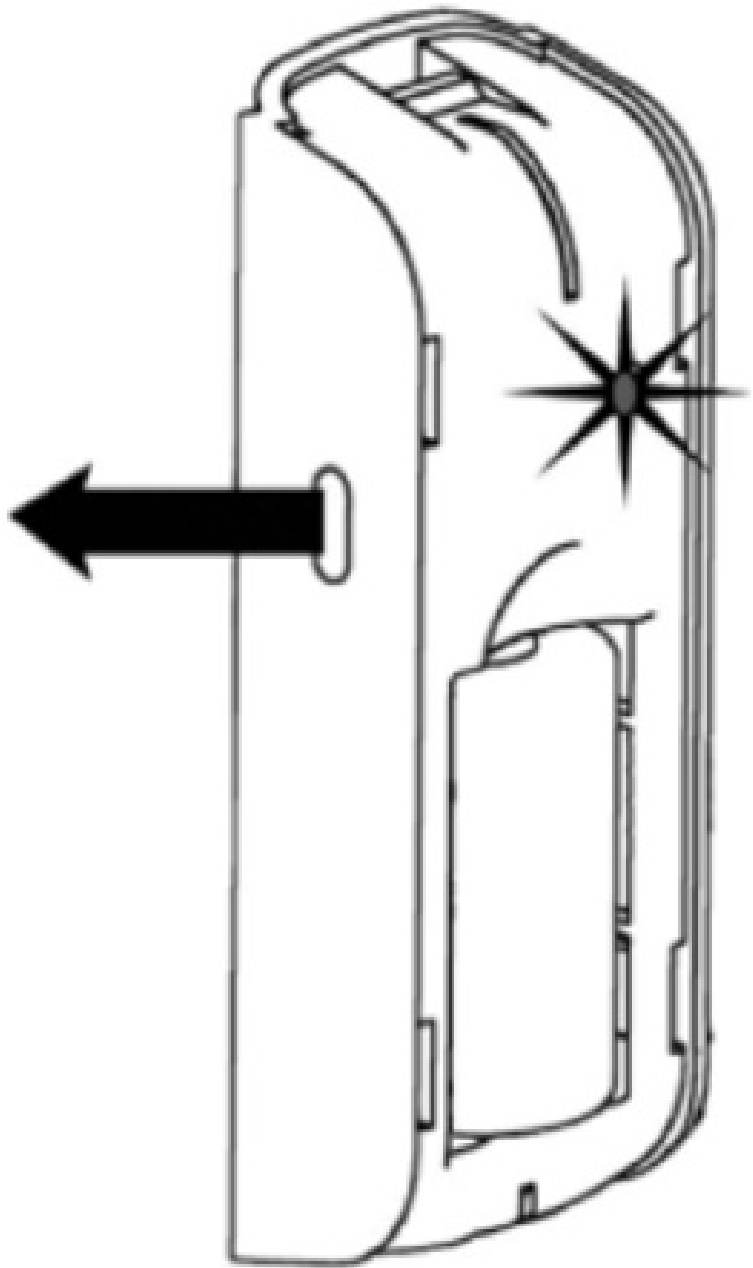


Press and hold the side button while you reinsert the battery

3

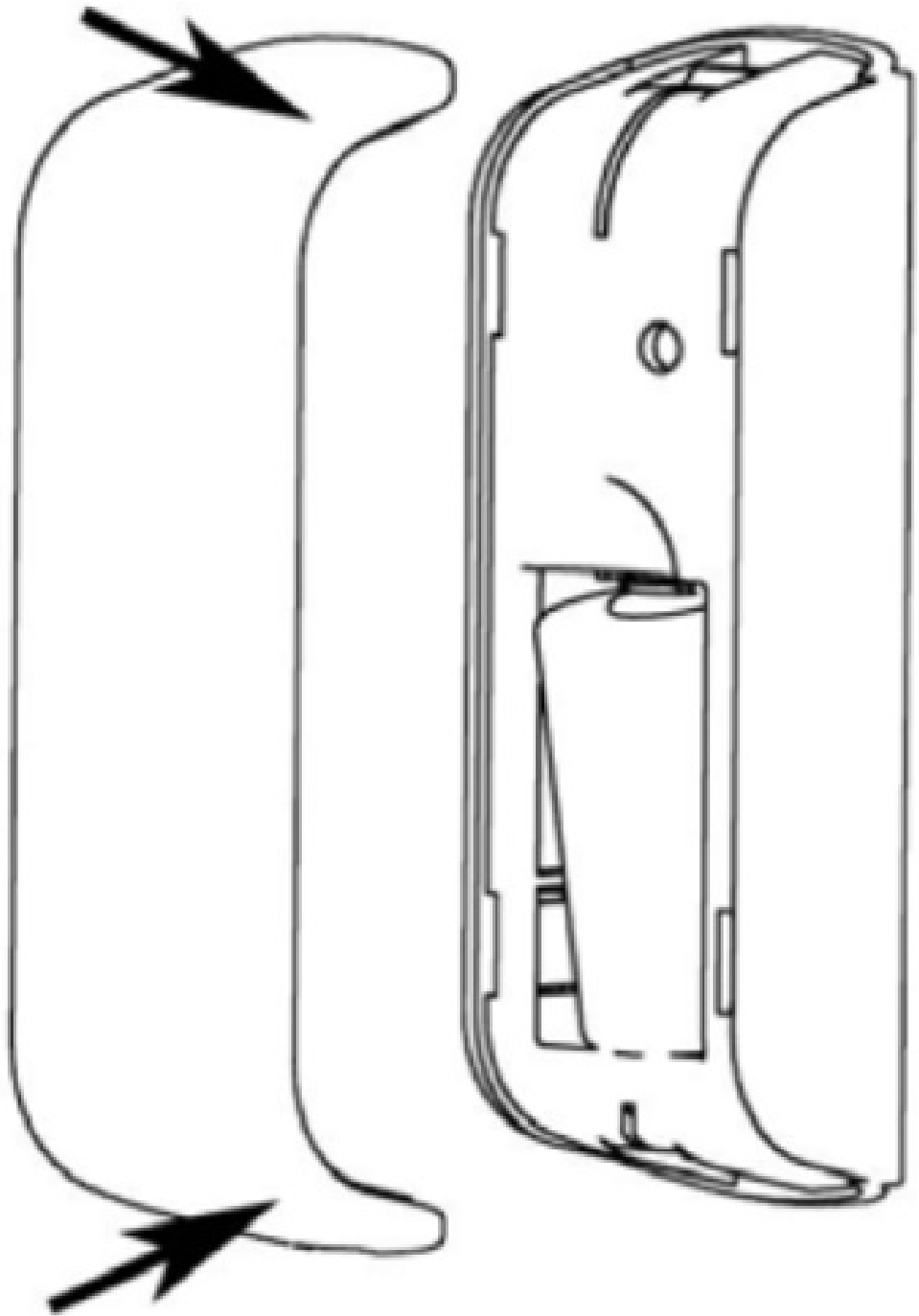


4



Put back the front cover.

5



SALUS Controls is a member of the Computime Group

Maintaining a policy of continuous product development SALUS Controls plc reserve the right to change specification, design and materials of products listed in this brochure without prior notice.

www.salus-controls.com

Head Office:





SALUS Controls Plc

Units 8-10 Northfield Business Park

Forge Way, Parkgate, Rotherham

S60 1SD, United Kingdom

E: sales@salus-tech.com

	<p>SALUS PS600 Temperature Sensor [pdf] User Guide PS600, Temperature Sensor, PS600 Temperature Sensor</p>
	<p>SALUS PS600 Temperature Sensor [pdf] User Guide PS600, Temperature Sensor, PS600 Temperature Sensor</p>
	<p>SALUS PS600 Temperature Sensor [pdf] User Guide PS600, Temperature Sensor</p>
	<p>SALUS PS600 Temperature Sensor [pdf] User Guide PS600 Temperature Sensor, PS600, PS600 Sensor, Temperature Sensor, Sensor</p>

References

- [🔄 Choose your country – Salus](#)
- [🔄 SALUS Controls - intelligent temperature control](#)
- [🌐 Salus – Smart Technology for your comfort](#)