



SALUS MS600 Motion Sensor User Guide

[Home](#) » [SALUS](#) » SALUS MS600 Motion Sensor User Guide 

Contents

- [1 SALUS MS600 Motion Sensor](#)
- [2 Introduction](#)
- [3 Product Compliance](#)
- [4 Safety Information](#)
- [5 Technical Specification](#)
- [6 Dimensions](#)
- [7 Power up & Pairing](#)
- [8 Factory Reset](#)
- [9 Documents / Resources](#)
 - [9.1 References](#)
- [10 Related Posts](#)

SALUS®

SALUS MS600 Motion Sensor



Introduction

MS600 is a battery powered motion sensor that can detect movement. It supports the pet immunity up to 36 kg and its detection distance is up to 8 meters. This product must be used with the Universal Gateway (UG600/UGE600) and the Salus Smart Home App .

Product Compliance

This product complies with the essential requirements and other relevant provisions of Directives 2014/53/EU (RED) and 2011/65/EU. The full text of the EU Declaration of Conformity is available at the following internet address: www.saluslegal.com. 2405-2480MHz; <10dBm

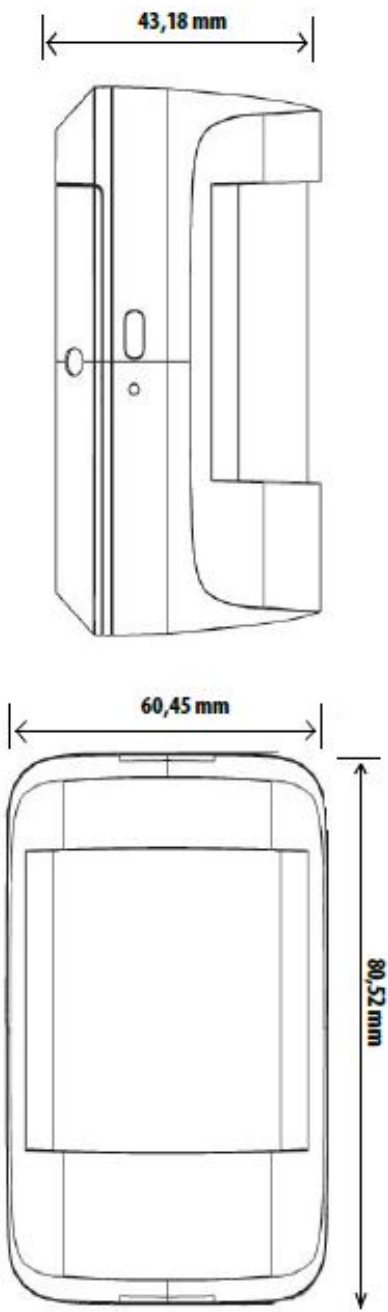
Safety Information

Use in accordance with the regulations. Indoor use only. Keep your equipment completely dry. Disconnect your equipment before cleaning it with a dry towel.

Technical Specification

Technical Specification	
Detection Angle/Distance/ Technology	80 degrees/ 8 meters/ PIR
Pet Immune	~ 36 kgs
Mounting Height	1.9 to 2.3 m
Protocol	ZigBee 3.0: 2.4GHz
Battery Life/Type	~ 3 Years/ 1x CR123A
Operating Temperature	0°C ~ 40°C
Operating Humidity	Up to 85%, Non-condensing
Operating Range	~40 m Open Field
Certifications	CE

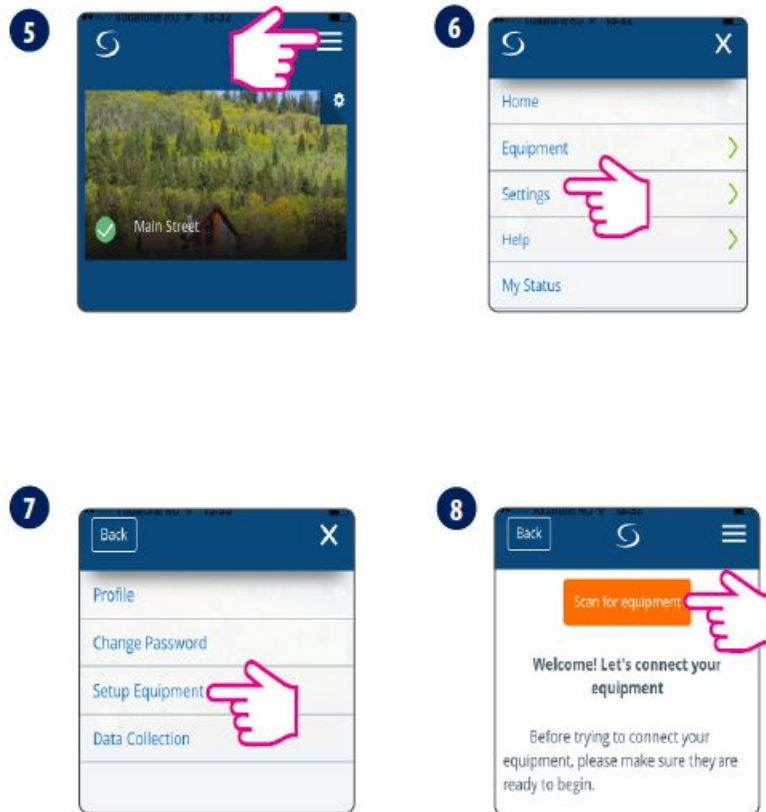
Dimensions



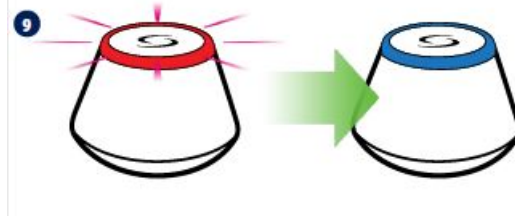
Power up & Pairing



Follow the onscreen instructions up to “Finish”.



MS 600 LED Indicator: If sensor has not been added to gateway, the LED will be blinking about one time per second. The LED will turn off when joined to gateway successfully.



Activated

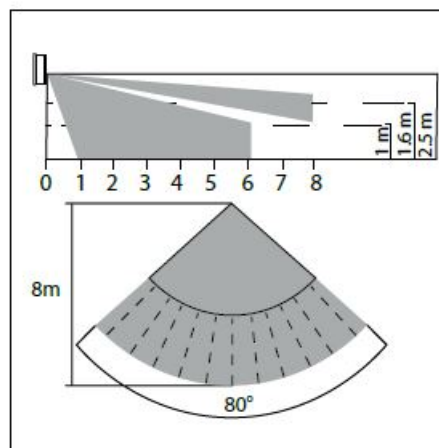


Deactivated



The sensor will change its status from deactivated to activated when movement is detected. To turn ON/turn OFF other Smart Home devices dependent on the MS600 motion sensor (or receive an SMS/email notification) create a One Touch rule in the OneTouch menu of the App.

Positioning



The Motion Sensor should be placed in a corner of the room with a view of each entry point. For accurate motion detection, there should be no obstacles in front of the product's lens. The mounting height must be between 1.9 m and 2.3 m.

Install the motion sensor by removing the bracket.

Note: This product has low voltage detection reminder, when the battery voltage is in low status, the detector will give out a low battery signal to the app. Replace the battery timely on low battery warning to ensure the detector works properly. If you don't use this product for a long time, please remove the battery for safekeeping.

Alerts

UG/UGE600



Hallway|

MS600 - low battery

Hallway MS600

Error - low battery

Factory Reset



Press the reset button for 3 seconds then release the pin to reset the sensor. After the reset, the sensor will be found by the App or the gateway when they search for the device.

Head Office:

- SALUS Controls
- Units 8-10, Northfield Business Park, Forge Way, Parkgate Rotherham, S60 1SD
- Email: sales@salus-tech.com

SALUS CONTROLS DISTRIBUTOR: QL CONTROLS Sp. z o.o., Sp. k. ul. Rolna 4, 43-262 Kobielice, Poland

SALUS Controls is a member of the Computime Group. Maintaining a policy of continuous product development SALUS Controls plc reserve the right to change specification, design and materials of products listed in this brochure without prior notice. For PDF Installation guide please go to www.salus-manuals.com

Documents / Resources



[SALUS MS600 Motion Sensor](#) [pdf] User Guide MS600 Motion Sensor, MS600, Motion Sensor

References

- [SALUS Controls - intelligent temperature control](#)
- [salus-manuals.com](#)
- [Salus – Smart Technology for your comfort](#)

Manuals+