



SALUS CONTROLS RT510 Thermostat and Mod Tager Installation Guide

[Home](#) » [SALUS CONTROLS](#) » SALUS CONTROLS RT510 Thermostat and Mod Tager Installation Guide 



Model: RT510 / RT510RF / RT510TX / RT510BC / RXRT510



Quick Guide Installation

Contents

- 1 RT510 Thermostat and Mod Tager
- 2 Installation
- 3 Dip Switch Settings
- 4 Button Functions RT510 and RT510TX
- 5 Installer Mode
- 6 Pairing the RT510TX with the Receiver/Boiler Controller
- 7 Setting Time and Date
- 8 Programming the RT510/RT510TX
- 9 Review the Setpoint (desired) temperature
- 10 Temporary Override
- 11 Permanent Override
- 12 Boost function
- 13 Frost protection
- 14 Holiday Mode
- 15 Reset function RT510
- 16 Reset function RT510TX
- 17 Documents / Resources
 - 17.1 References

RT510 Thermostat and Mod Tager

Technical Support

T: 44 (0) 1226 323961

E: tech@salus-tech.com

RT510 & RT510RF Quick Guide

Introduction

The RT510 thermostat will switch your heating system on or off, as needed, in accordance with the temperature set by you. The RT510 series includes the following products:

- RT510 for wired applications
- RT510RF (RT510TX + RXRT510) for wireless applications
- RT510TX for wireless application, using 5 x 5 receiver
- RXRT510 for wireless application using 5 x 5 transmitter
- RT510BC for wireless application

Go to www.salus-manuals.com for the full PDF version of the manual.

Product Compliance

EU Directives: 2014/53/EU and 2011/65/EU. Please check www.saluslegal.com for the full information.




868.0-868.6MHz; <13dBm

Safety Information

Use in accordance with the EU and national regulations. For indoor use only.


Keep your device completely dry. This product must be installed by a competent person and in accordance with all the EU and national regulations.

 Always isolate the AC Mains supply before installing or working on any components that require 230 VAC 50Hz supply.

Installation

RT510 Thermostat
Insert the batteries and wire up the device.

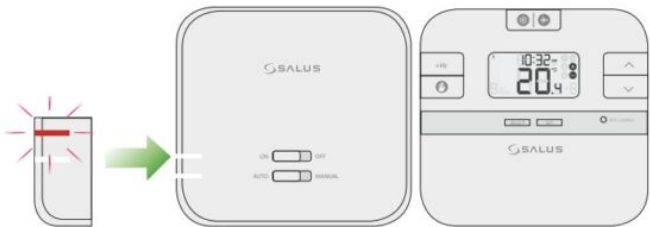


Terminal	Description	Backplate
1 (COM)	Common Terminal	
2 (NC)	Switched Live OFF	
3 (NO)	Switched Live ON	

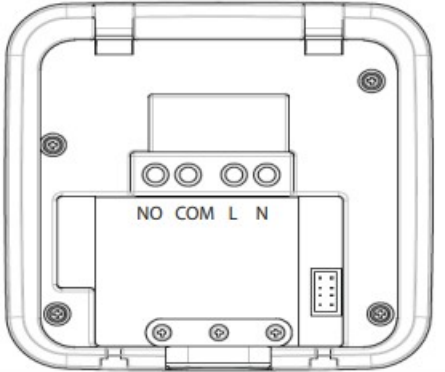
RT510RF (RT510TX+RXRT510)Thermostat and Receiver

- 1. Wire up the receiver and switch the power on
- 2. Once the receiver is switched on then insert the batteries into the thermostat. If using RT510RF pack the devices are already paired.
Now follow Test pairing process to confirm connection between both the thermostat and receiver. If purchased the devices separately please follow pairing process.

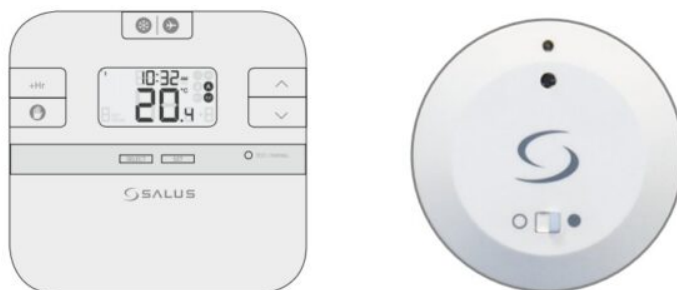
After power up, the receiver will be in pairing mode and the LED will flash red.



Remove the link wire in the boiler

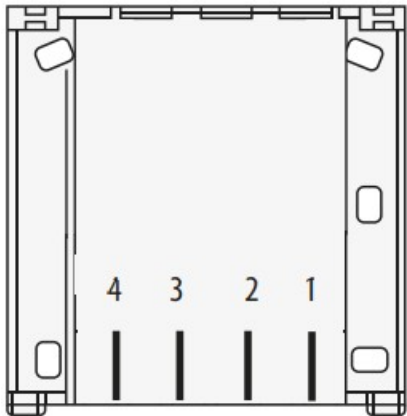
Terminal	Description	Receiver Terminals
NO	Switch Terminal	
COM	Common Switch Terminal	
L	Mains Live (230VAC)	
N	Mains Neutral	

RT510BC (RT510TX+Boiler Controller)



Wire up the boiler controller and switch it ON. After that please insert the batteries into the thermostat.

Leave the link wire in the boiler

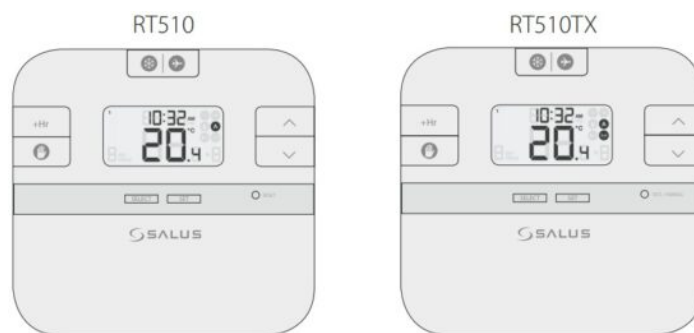
Terminal	Description	Plug in BC terminals
2 (L)	Mains Live	
1 (N)	Mains Neutral	
4 (NO)	Common Switch Terminal	
3 (COM)	Switch Terminal	













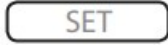
Dip Switch Settings

The DIP switches are found on the rear of your thermostat and can be used to change the span (temperature accuracy) of your thermostat from the default $\pm 0.5^{\circ}\text{C}$ to $\pm 0.25^{\circ}\text{C}$ and the programmes 5-2 or 24h. Changing DIP Switch 2 may cause your boiler to operate more frequently. The DIP switches are located on the back of the thermostat.

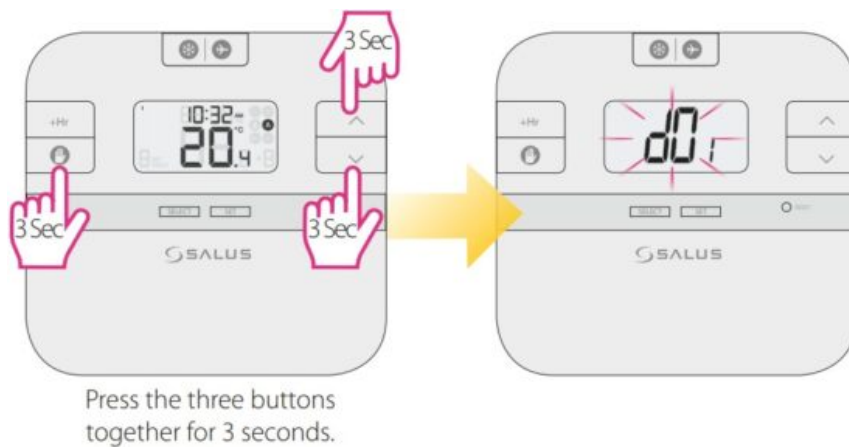


Button Functions RT510 and RT510TX



Key	Function
 	1. Press once to activate Frost Mode 2. Press for 3 seconds in order to activate Holiday Mode.
+Hr	Press once to activate/deactivate Boost function
	Press once to enter/exit Permanent Override function.
	Increase button
	Decrease button
	Select the clock or programme settings
	Press to confirm your settings
	1. Press once to enter in Test Mode for RT510RF 2. Press for 3 seconds to enter/exit Pairing Mode for RT510RF 3. Press once to return to Factory Settings for the RT510
 +  + 	Press the buttons for 3 seconds to enter Installer Mode
 + 	Press the buttons for 3 seconds to enter Clock Settings

Installer Mode



dx	Function	Parameter	Description	Default value
d01	Temperature display Increments	0.1 or 0.5°C	Select temperature display increments	0.5°C
d02	Temperature offset	+/-3.0°C	Calibrate your thermostat temperature	0. 0°C
d03	Frost setpoint	5.0-1 7.0°C	Set the Frost Point temperature	5.0°C

Pairing the RT510TX with the Receiver/Boiler Controller



If you are using the RT510RF or RT510BC pack, the pairing between the thermostat and the receiver/boiler controller is already done.

If you bought an RT510TX and RXRT510 separately then pair as follows.

Please make sure that the Receiver/Boiler Controller is set on Auto.

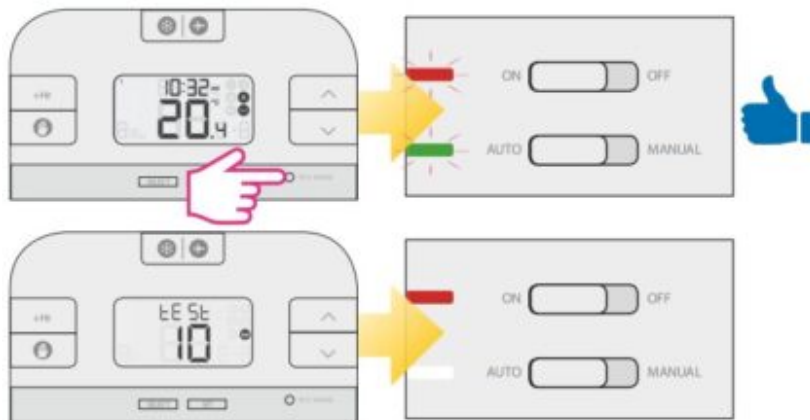
Begin the pairing process



End the pairing process



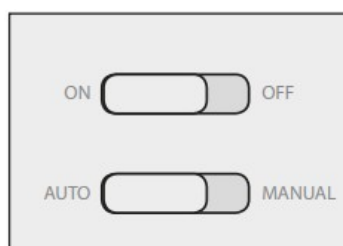
Test the pairing process



If you bought an RXRT510 or RT510TX and intend pairing with other devices in the 5×5 range, please refer to the Receiver Units manual, or the relevant manuals available at www.salus-manuals.com

Button Description for RXRT510 Receiver

Button	Function
ON	The receiver is enabled, ready for use.
OFF	The receiver is disabled, will not function.
AUTO	The receiver will switch on and off automatically, as operated by the thermostat.
MANUAL	Providing ON is selected, the receiver will switch on continuously, overriding the thermostat.

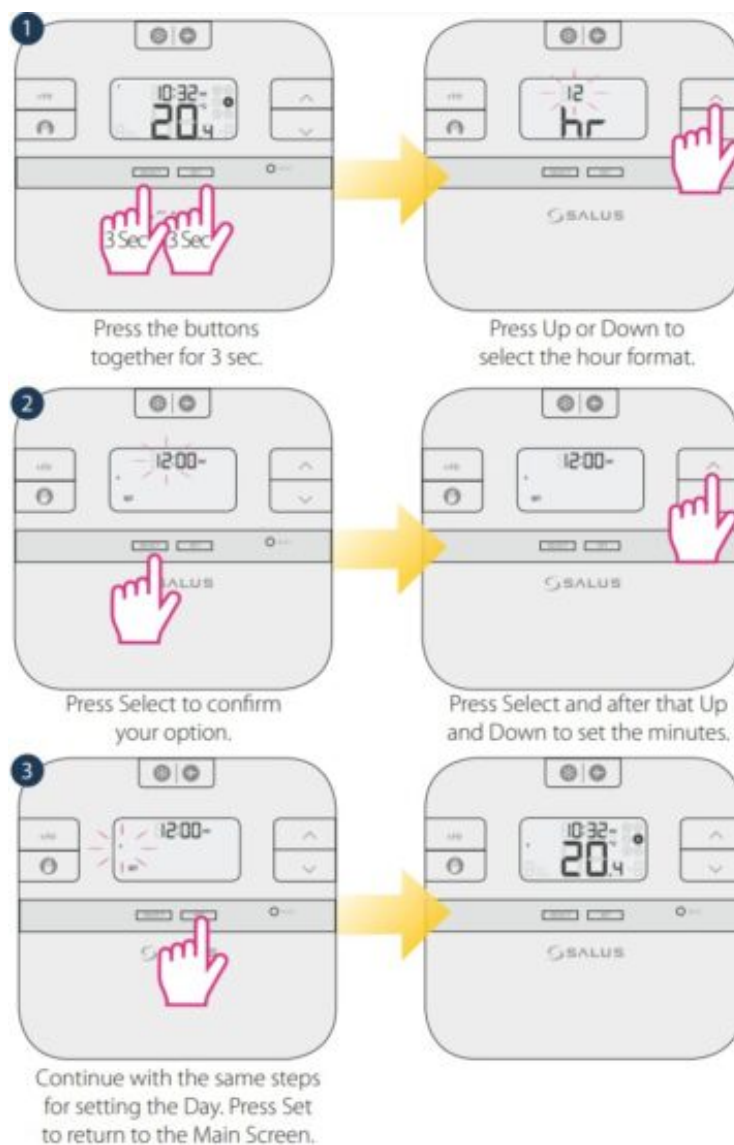


Button Description for RXBC605 Boiler Controller

Button	Function
SYNC	The boiler controller will be synchronised with the thermostat.
AUTO ○	The receiver will switch on and off automatically, as operated by the thermostat.
MANUAL ●	Select in the event of thermostat failure to switch boiler on continuously, overriding the thermostat.



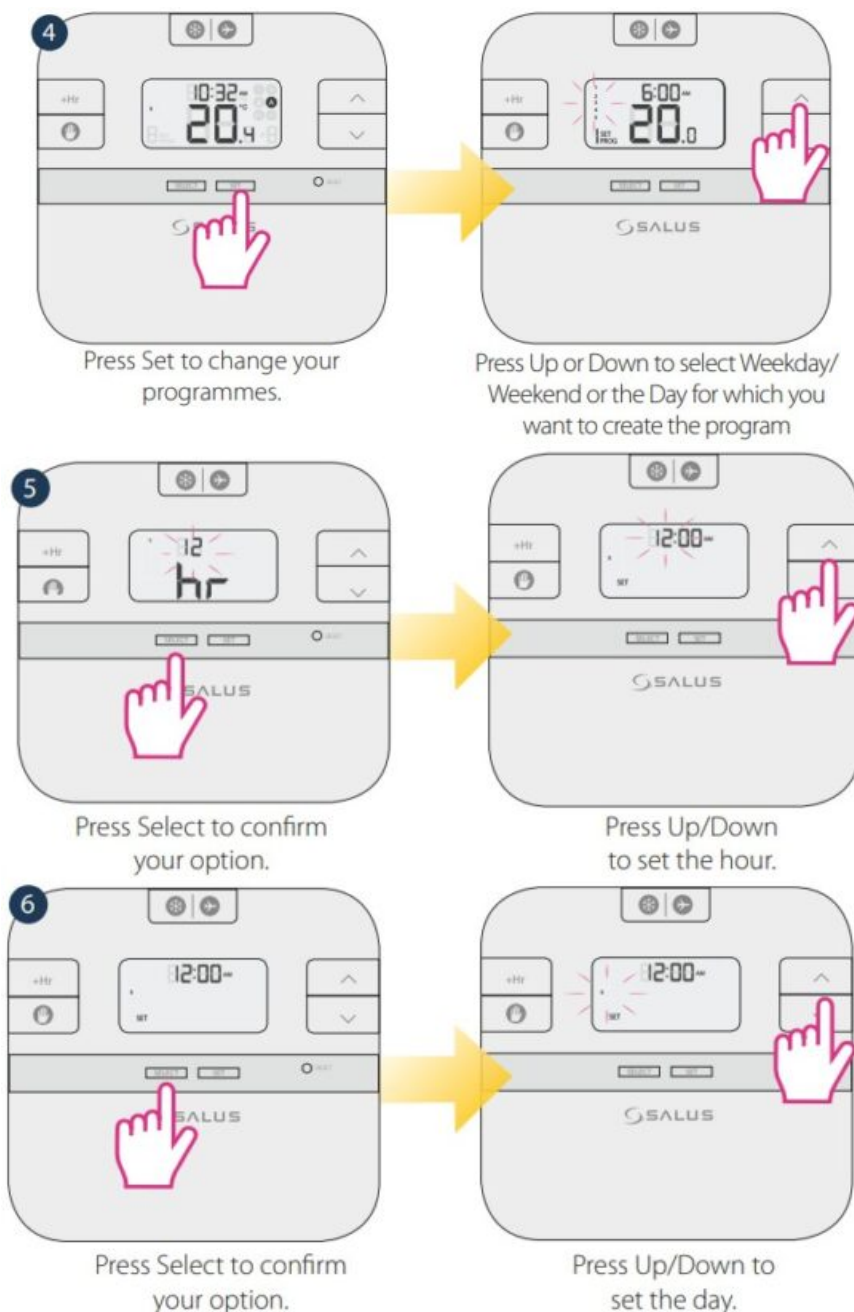
Setting Time and Date



Programming the RT510/RT510TX

You can create personalized programmes for your controller. You have the option to choose between a 5-2 days programme or a daily one by using the DIP Switches.

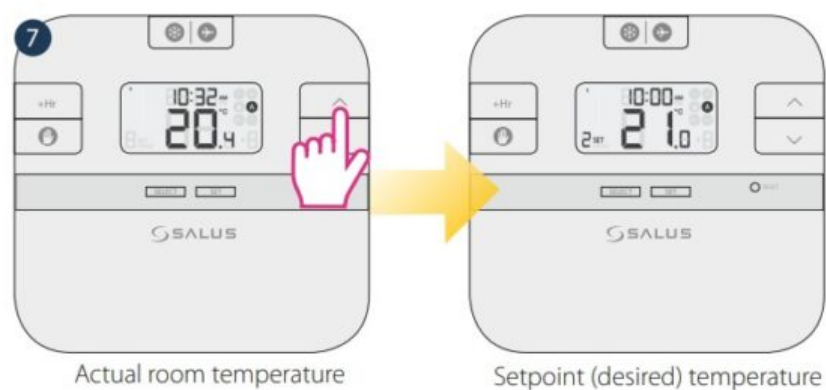
RT510/RT510TX	
5-2 Days Programme	24h Programme
Weekdays 6 sets of time/channel Weekends 6 sets of time/channel Total: 12 settings/week	24h 6 sets of time/channel Total: 42 settings/week



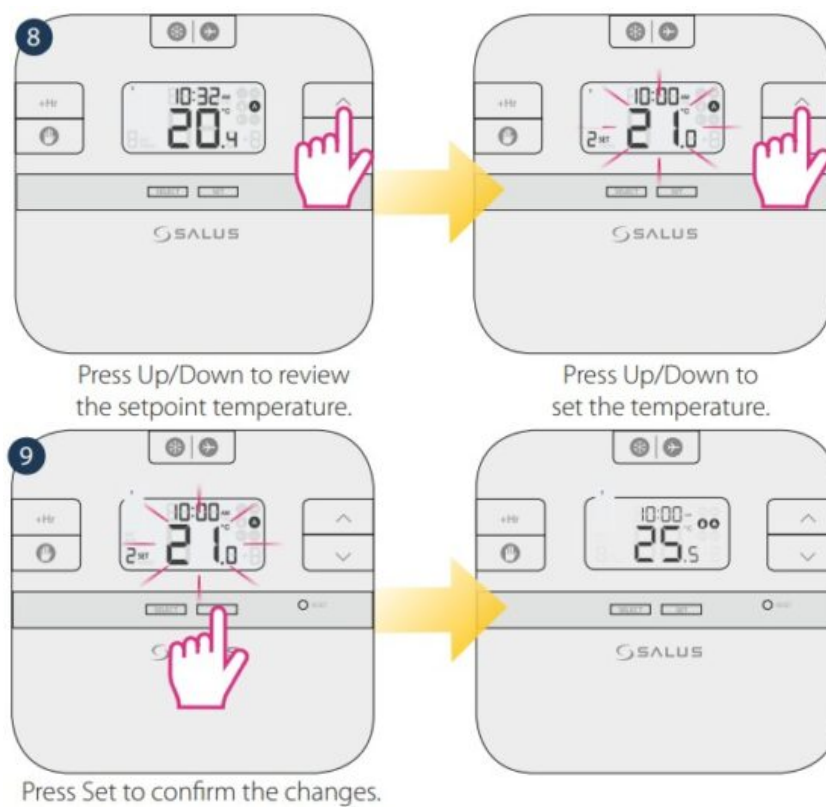
After you have done all the changes, please press SET to confirm all your choices and to return to the Main Screen.

Note: Don't forget to move the DIP Switch to 24h in order to have the individual programme active. After that please follow the same instructions as for the 5-2 days programme.

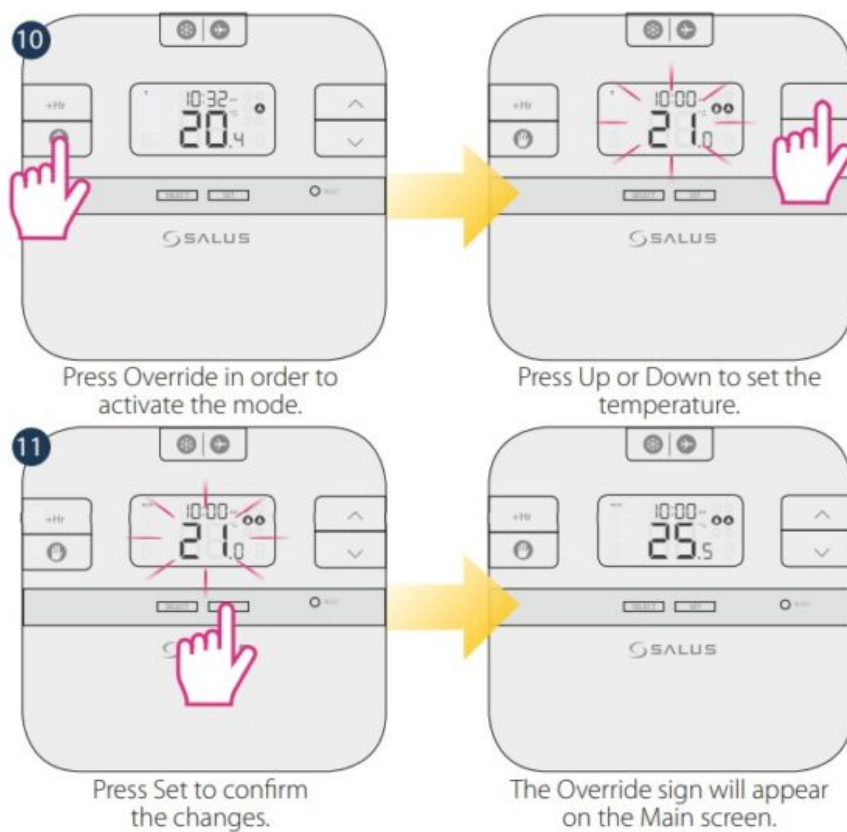
Review the Setpoint (desired) temperature



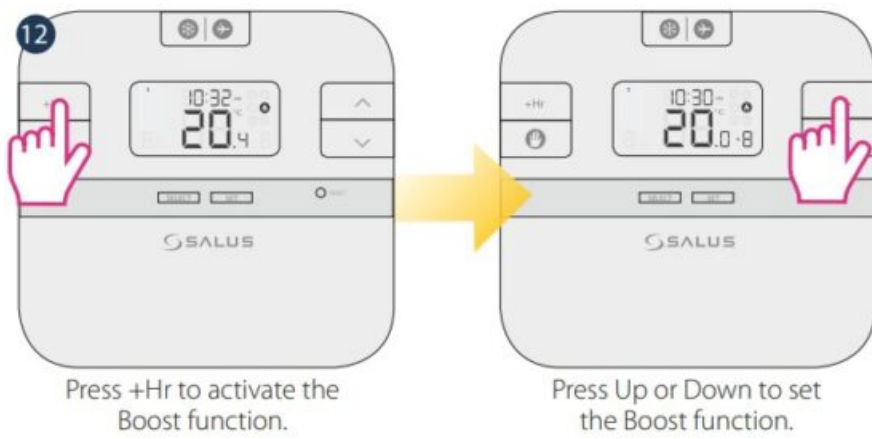
Temporary Override



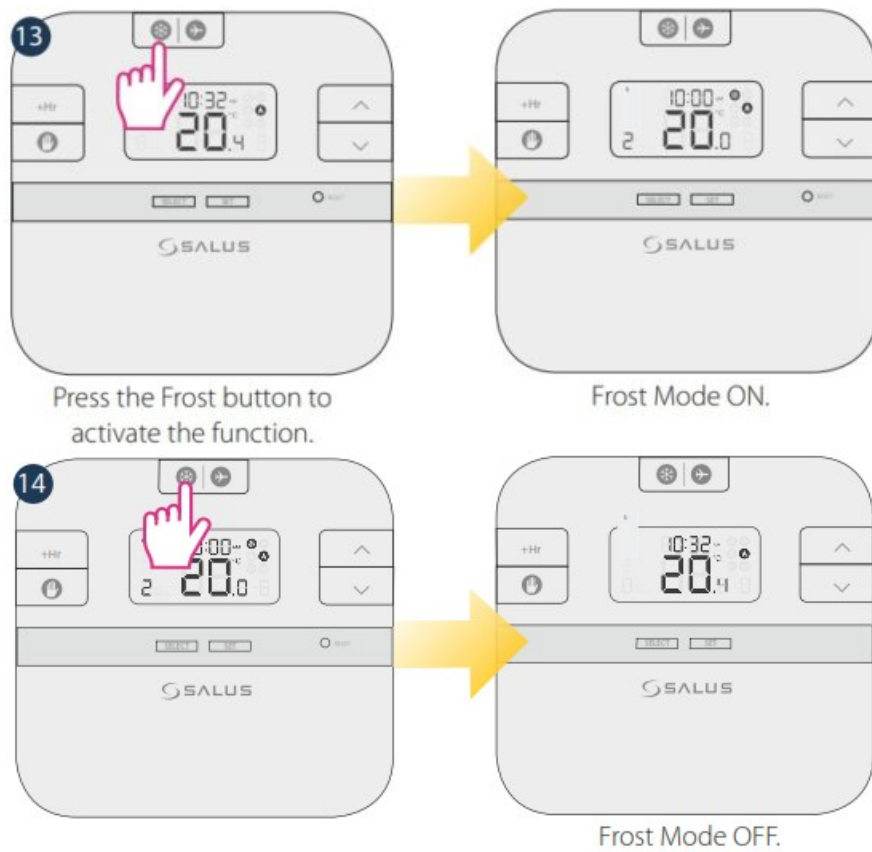
Permanent Override



Boost function

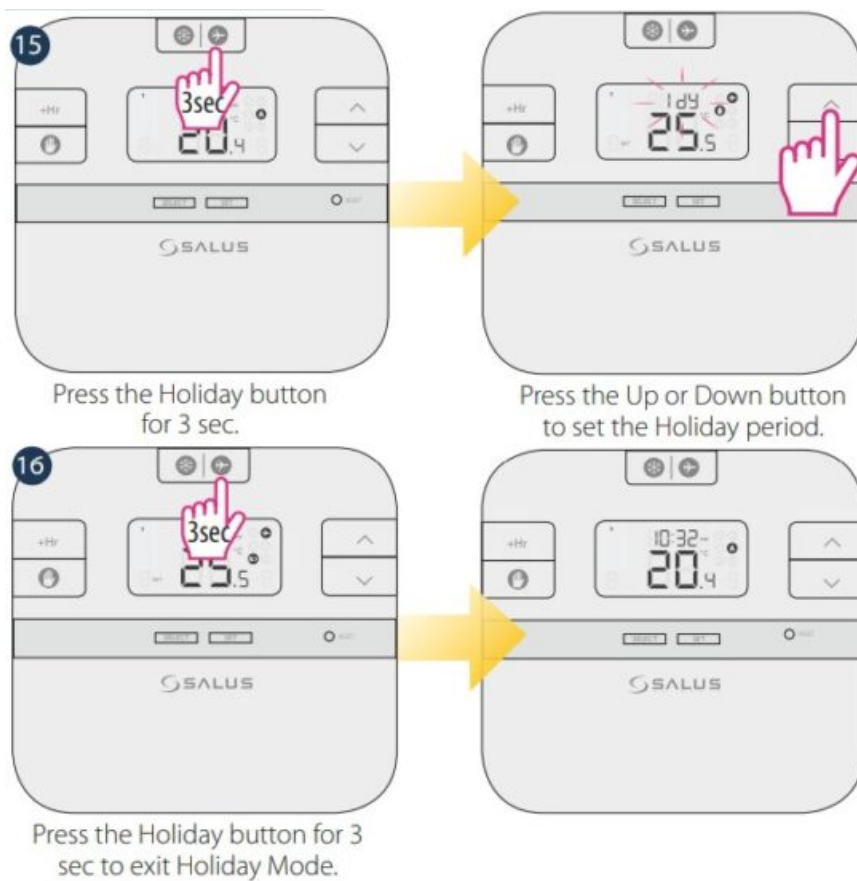


Frost protection



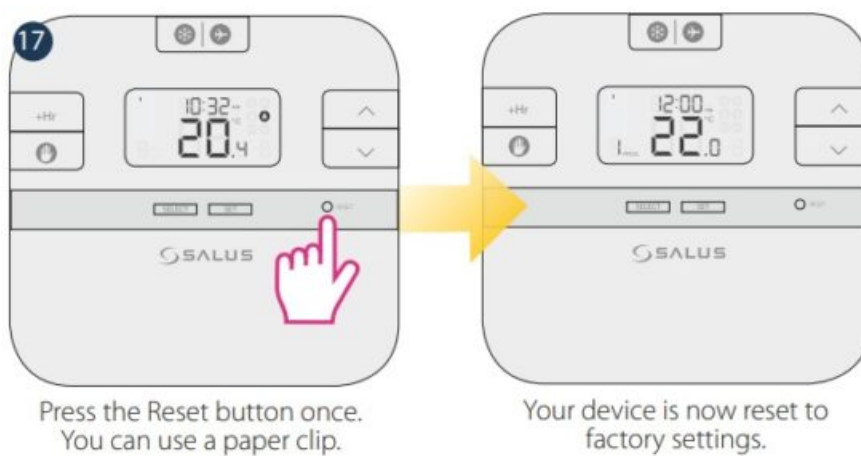
The Frost protection temperature can be reviewed by pressing the UP button once, but can only be changed in Installer Mode.

Holiday Mode



Note: You can also exit Holiday Mode by setting the days to zero.

Reset function RT510



Reset function RT510TX

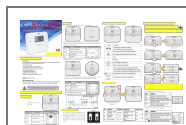


Remove the batteries without pressing any button. Wait 2 minutes and insert the batteries again. Your device will be restarted.

When you want to change the batteries your device will use the internal memory to backup your settings. You have 30 seconds to change the batteries before losing your settings.



Documents / Resources



[SALUS CONTROLS RT510 Thermostat and Mod Tager](#) [pdf] Installation Guide
RT510, RT510RF, RT510TX, RT510BC, RXRT510, RT510 Thermostat and Mod Tager, RT510, Thermostat and Mod Tager, and Mod Tager, Mod Tager, Tager

References

- [Choose your country – Salus](#)
- saluslegal.com
- [User Manual](#)

Manuals+. Privacy Policy

This website is an independent publication and is neither affiliated with nor endorsed by any of the trademark owners. The "Bluetooth®" word mark and logos are registered trademarks owned by Bluetooth SIG, Inc. The "Wi-Fi®" word mark and logos are registered trademarks owned by the Wi-Fi Alliance. Any use of these marks on this website does not imply any affiliation with or endorsement.