

SALUS
CONTROLS
**MS610 Smart
Motion Sensor**



SALUS CONTROLS MS610 Smart Motion Sensor Instruction Manual

[Home](#) » [SALUS CONTROLS](#) » SALUS CONTROLS MS610 Smart Motion Sensor Instruction Manual 

Contents

- 1 SALUS CONTROLS MS610 Smart Motion Sensor
- 2 Product Information
- 3 Product Usage Instructions
- 4 FAQ
- 5 Introduction
- 6 Safety Information
- 7 OVERVIEW
- 8 Technical Specification
- 9 Positioning
- 10 Product installation
- 11 Power up & Pairing
- 12 Low battery alert
- 13 LED Description
- 14 Factory Reset
- 15 Documents / Resources
 - 15.1 References
- 16 Related Posts





Product Information

Specifications

- **Model:** MS610
- **Frequency:** 2405-2480MHz
- **Compliance:** Directives 2014/30/EU, 2014/35/EU, 2014/53/EU, 2015/863/EU

Product Usage Instructions

Installation

1. Locate a suitable area to install the motion sensor away from obstructions.
2. Mount the sensor securely using the provided hardware.
3. Ensure the sensor is positioned to detect motion effectively within its range.

Networking

To initiate networking mode, press and hold the LED Networking indicator button for 5 seconds until the LED indicates it is ready to connect.

FAQ

Q: How do I know if the motion sensor is functioning correctly?

A: The LED indicator will flash when motion is detected, indicating proper functionality.

Q: Can the motion sensor be used outdoors?

A: This motion sensor is designed for indoor use only and should not be exposed to outdoor elements.

Introduction

- The NEW Smart Motion Sensor MS610 adopts ultra-low power ZigBee wireless technology, with low power consumption, high security, interconnection, and other characteristics.
- Automatic threshold adjustment technology is used to enhance the stability of the sensor, which can effectively prevent the sensor from reporting alarms falsely.
- Using automatic temperature compensation technology can effectively prevent the sensitivity from decreasing due to temperature changes.
- This product must be used with the Universal Gateway (UG600/UGE600 or UG800) and the Salus Premium Lite app.

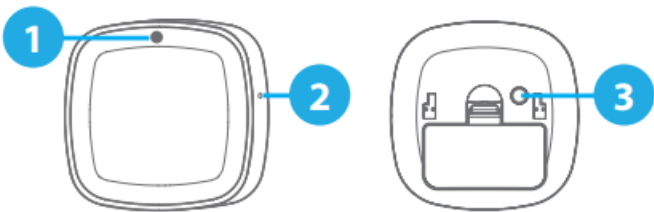
Product Compliance

- This product complies with the essential requirements and other relevant provisions of Directives 2014/30/EU, 2014/35/ EU, 2014/53/EU, and 2015/863/EU.
- The full text of the EU Declaration of Conformity is available at the following internet address:
www.saluslegal.com
- **2405-2480MHz**; <20dBm (Wifi)

Safety Information

- Use in accordance with the regulations. Indoor use only. Keep your device completely dry. Remove the battery from the device before cleaning it with a dry cloth.
- The equipment is only suitable for mounting at heights ≤ 2.1 m. Use only the batteries listed on the back cover.

OVERVIEW



	1	2	3
	LED indicator	Networking button	Unusable

Technical Specification

Operating Voltage/Type	DC3V / 1 x CR123A/CR17335x1 battery
Detection Angle / Distance / Technology	90 degrees / <9-12 m under 25° C (detection distance will be different, depending on the environment temperature) / PIR
Pet Immune	11 kg or less
Mounting Height	2.1 m
Protocol	ZigBee 3.0: 2.4GHz
Operating Temperature	-10°C ~ +50°C
Operating Humidity	Up to 95%, Non-condensing
Wireless Networking Distance	100m Open field with no obstacle
Dimensions	65x65x28.5 mm

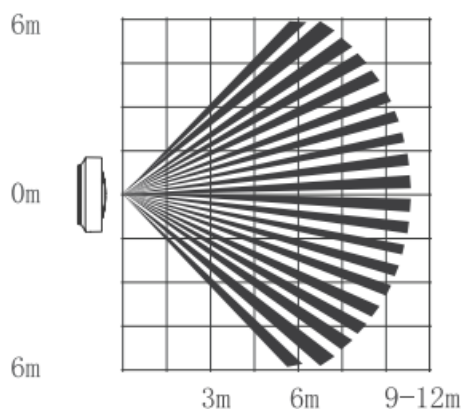
Note: A passive infrared sensor (PIR sensor) is an electronic sensor that measures infrared (IR) light radiating from objects in its field of view.

Positioning

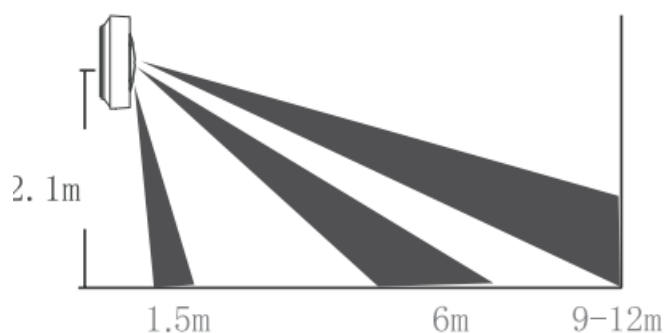
There should be no obstacles in front of the product's lens for accurate motion detection. The mounting height must be 2.1 m. This product is for indoor use only. When installing, note that the LED should face upwards. The installation surface should be solid without vibration.



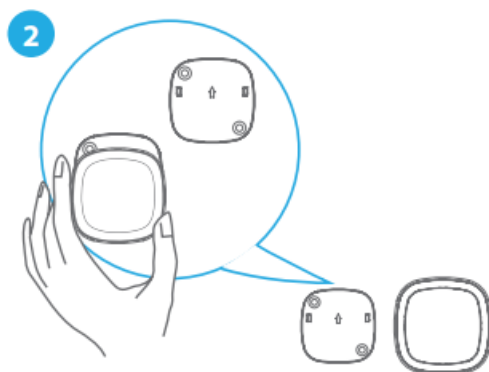
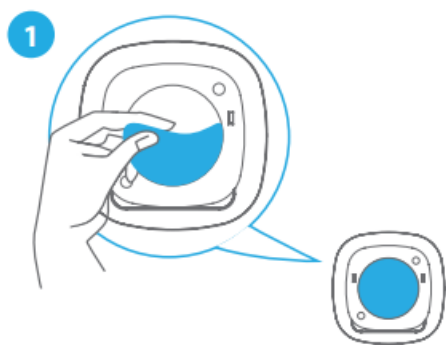
Detecting area (top view)



Detecting area (side view)

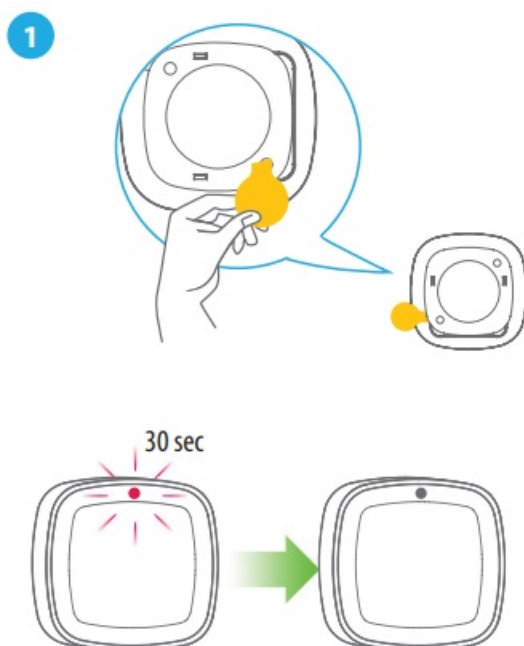


Product installation



- Place the sensor in the proper area after removing the double-sided tape on the bracket.
- The “arrow” icon should point toward the ceiling while installing the bracket.
- Then install the sensor onto the bracket.

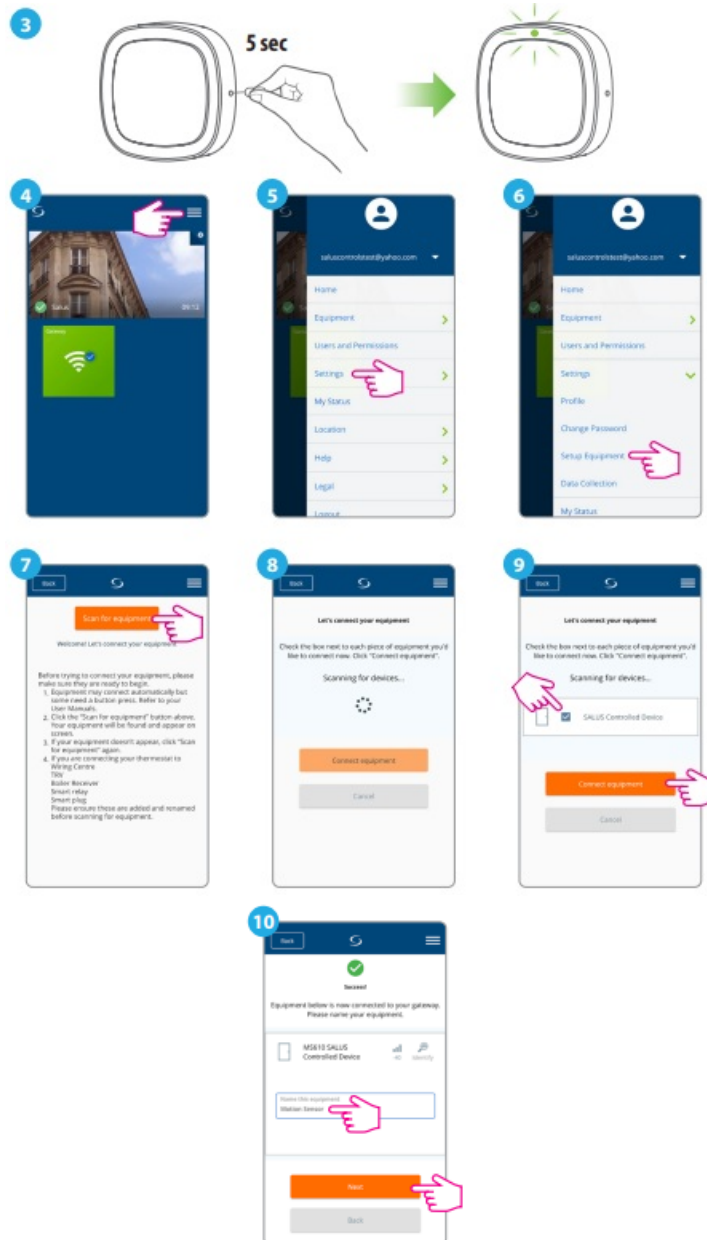
Power up & Pairing



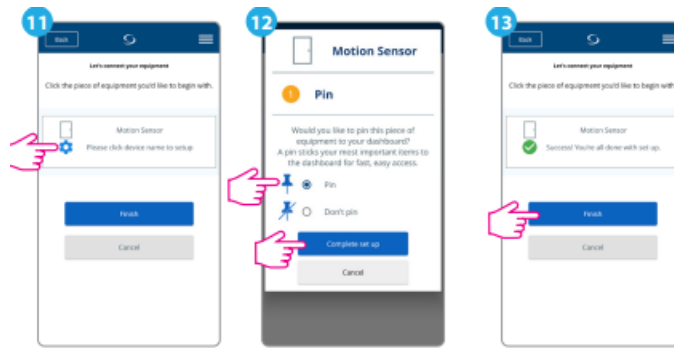
Remove the insulating strip to power up the device. The sensor will enter a warm-up state, then red flashes for 30 seconds and goes off when the warm-up is finished.



- This product must be used with the Universal Gateway (UG600/UGE600 or UG800) and the Salus Premium Lite app. The Gateway should be connected to a stable internet connection.



- The sensor will change its status from deactivated to activated when movement is detected. To turn ON/turn OFF other.
- Smart Home devices dependent on the MS610 motion sensor (or receive an SMS/email notification) create a One Touch rule in the OneTouch menu of the App



- Deactivated



- Activated



Low battery alert

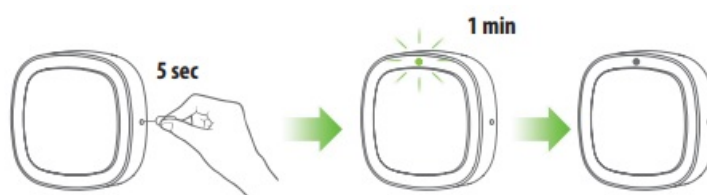
- **Note:** This product has a low voltage detection reminder, when the battery voltage is in low status, the detector will give out a low battery signal to the app.
- Replace the battery timely on low battery warning to ensure the detector works properly. If you don't use this product for a long time, please remove the battery for safekeeping.
- Follow the steps on the right to activate "Low battery alert"



LED Description

	State	LED
Warm-up		Red LED flashes slowly for the 30s
Searching for networks		Green LED flash quickly (3 times per second)
Connected to network		The green LED keeps on for 3 seconds and then goes off
Lost connection to the network		Green LED flash slowly for 3 seconds (2 times per second)
Device deleted (operated via APP)		
Device deleted (operated by pressing networking button for 5s)		Green LED flashes slowly 6 times, Green LED flashes quickly (3 times per second)
Presence detection		Red LED keeps on for 1.5-2 second

Factory Reset



Press the Network button for 5 seconds then release the pin to reset the sensor. After the reset, the MS610 icon in the app will turn gray. Follow steps 7 to 13 to add the sensor to the system again.

Head Office:

- **SALUS Controls**
- **Units 8-10, Northfield Business**
- **Park, Forge Way, Parkgate**
- **Rotherham, S60 1SD**
- **Email: sales@salus-tech.com**
- **SALUS CONTROLS GMBH**
- **Dieselstrasse 34**
- **63165 Mühlheim am Main**
- **UK: tech@salus-tech.com**
- **DE: support@salus-controls.de**
- **NL: support@saluscontrols.nl**
- **FR: technicalsupport@saluscontrols.fr**
- **www.saluscontrols.com**
- SALUS Controls is a member of the Computime Group Maintaining a policy of continuous product development
SALUS Controls plc reserves the right to change the specification, design, and materials of products listed in this brochure without prior notice.

Documents / Resources



[SALUS CONTROLS MS610 Smart Motion Sensor](#) [pdf] Instruction Manual MS610 Smart Motion Sensor, MS610, Smart Motion Sensor, Motion Sensor, Sensor

References

- [Choose your country – Salus](#)
- [saluslegal.com](#)
- [User Manual](#)

Manuals+, Privacy Policy

This website is an independent publication and is neither affiliated with nor endorsed by any of the trademark owners. The "Bluetooth®" word mark and logos are registered trademarks owned by Bluetooth SIG, Inc. The "Wi-Fi®" word mark and logos are registered trademarks owned by the Wi-Fi Alliance. Any use of these marks on this website does not imply any affiliation with or endorsement.