

## SAL ESS107 Surface Socket



# SAL ESS107 Surface Socket User Guide

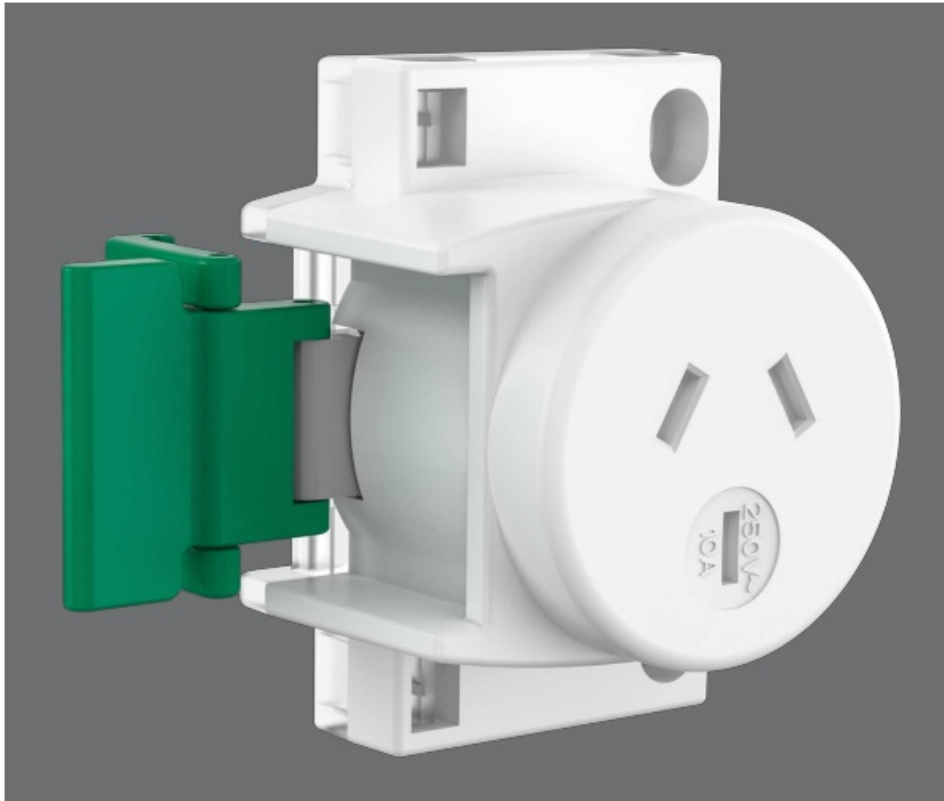
[Home](#) » [SAL](#) » SAL ESS107 Surface Socket User Guide 

### Contents

- [1 SAL ESS107 Surface Socket](#)
- [2 Product Information](#)
- [3 Product Usage Instructions](#)
- [4 Design Specifications](#)
- [5 Technical Specification](#)
- [6 Dimensions](#)
- [7 Documents / Resources](#)
  - [7.1 References](#)
- [8 Related Posts](#)



**SAL ESS107 Surface Socket**



### Specifications

- Model No.: ESS107
- Input Voltage: 250V AC
- Dimensions: 70mm (L) x 56mm (W) x 47mm (H)
- Body Colour: White

### Product Information

The ESS107 is a quick connect inline surface socket rated at 250V/10A. It is designed to save installation time and money.

### Design Specifications

- Australian approved three-pin 250V, 10A socket compliant to AS/NZS3112:2017
- Secure clip lock design
- Innovative transparent rear termination inspection cover
- Durable polycarbonate construction
- Designed to suit 1.0mm to 2.5mm flat twin and earth TPS, stranded, or solid conductors for installation by a qualified electrical installer
- Colour: White

### Technical Specification

- Product Model No.: ESS107
- Input Voltage (V/AC): 250

- Dimensions (mm): 70(L) x 56(W) x 47(H)
- Body Colour: White

## Product Usage Instructions

1. Ensure the power source is switched off before installation.
2. Identify and connect the appropriate conductors to the socket terminals.
3. Securely clip lock the design in place.
4. Use the transparent rear termination inspection cover to ensure correct connections.
5. Verify that the socket is compatible with the conductor size being used.
6. If unsure, consult a qualified electrical installer for installation.

## FAQ

- **Q: Is the ESS107 suitable for outdoor use?**

A: No, the ESS107 is designed for indoor use only.

- **Q: Can the ESS107 be used with stranded conductors?**

A: Yes, the ESS107 is compatible with stranded conductors within the specified size range.

## SURFACE SOCKET – QUICK CONNECT ESS107

Quick connect inline surface socket, 250V / 10A rated



## Application

Inline surface socket designed to save you installation time and money


## Design Specifications

- Australian approved three pin 250V, 10A socket, compliant to AS/NZS3112:2017
- Secure clip lock design
- Innovative transparent rear termination inspection cover

- Durable polycarbonate construction
- Designed to suit 1.0mm to 2.5mm flat twin and earth TPS, stranded or solid conductors for installation by a qualified electrical installer
- Colour white

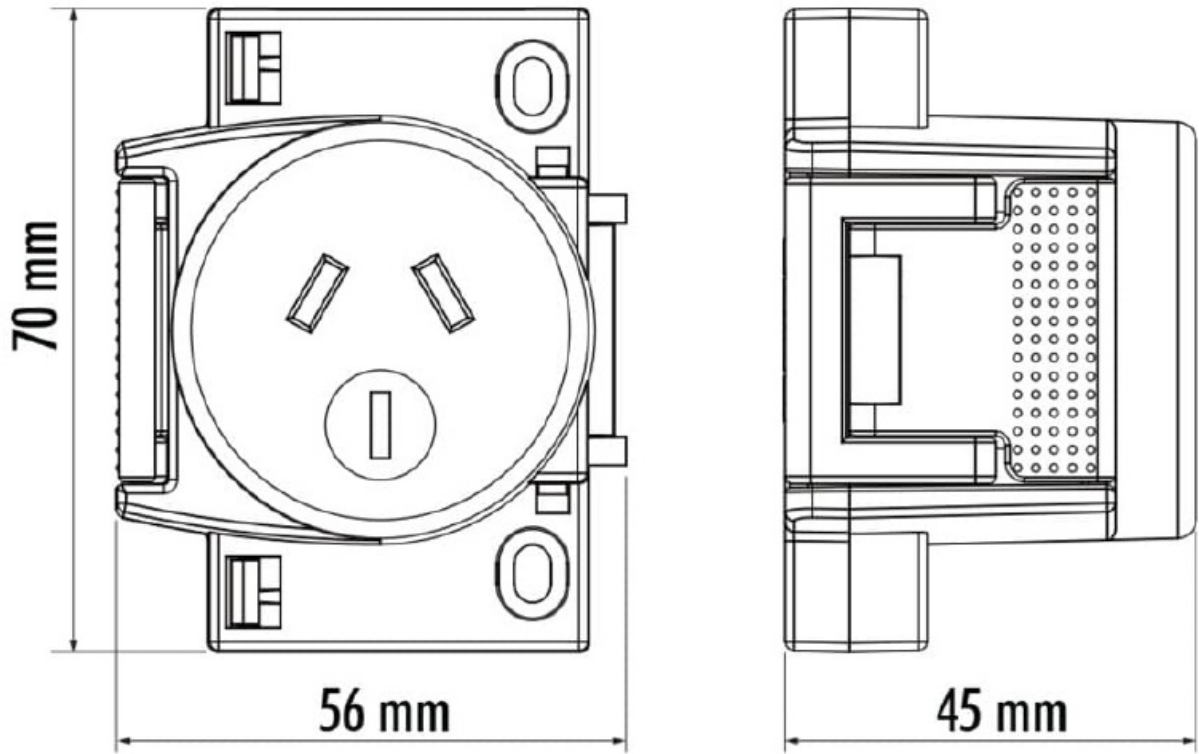


Technical Specification

Product	Model No.	Input Voltage (V/AC)	Dim (mm)	Body Colour
	ESS107	250	70(L) x 56(W) x 47(H)	WHITE

Due to continued product and technology enhancements, data sourced from sal.net.au shall not form part of any contract and or technical performance guarantee unless expressly confirmed in writing by SAL at the time of order. Products are sold in accordance with SAL Terms and Conditions of sale and all images shown are for illustration purposes only and may vary from the actual colour or finish. Unless specifically stated, all IP ratings nominated for Interior products are from “below the ceiling”.

Dimensions






### DID YOU KNOW ?

In the interest of safety and product performance, all electrical accessory components are covered by mandatory Australian and International Safety Standards. Always look out for the RCM logo on the product and if in doubt, check the compliance via your local Electrical regulator.

### Documents / Resources

	<a href="#">SAL ESS107 Surface Socket</a> [pdf] User Guide ESS107, ESS107 Surface Socket, ESS107 Socket, Surface Socket, Socket
---	--

### References

- [Welcome to SAL - Lighting a Smarter Future - SAL](#)
- [Welcome to SAL - Lighting a Smarter Future - SAL](#)
- [User Manual](#)

This website is an independent publication and is neither affiliated with nor endorsed by any of the trademark owners. The "Bluetooth®" word mark and logos are registered trademarks owned by Bluetooth SIG, Inc. The "Wi-Fi®" word mark and logos are registered trademarks owned by the Wi-Fi Alliance. Any use of these marks on this website does not imply any affiliation with or endorsement.