



H2B2 eSAJ EMS App User Guide

[Home](#) » [SAJ](#) » H2B2 eSAJ EMS App User Guide 

Contents

- 1 H2B2 eSAJ EMS App
- 2 Product Information
- 3 Product Usage Instructions
- 4 Installation of eSAJ EMS App
- 5 Features
- 6 Frequently Asked Questions
- 7 Documents / Resources
 - 7.1 References



H2B2 eSAJ EMS App



Product Information

Specifications

- Product Name: eSAJ EMS App
- Application: Energy Management System Application for Installers
- Web Tool: <https://esaj-home.saj-electric.com>
- Features
 - Reporting and Production Analysis
 - Consumption Analysis
 - Request Service and Track Progress
 - Remotely Monitor Multiple Sites
 - Transfer Sites and Users
 - Remotely Configure Parameters, Settings, Working Modes, and Update Firmware
 - Battery Health Analysis
 - Real-time In-App, SMS, E-mail Notifications
- Contact: discoverlithium.com
- Email: solarsales@discoverlithium.com

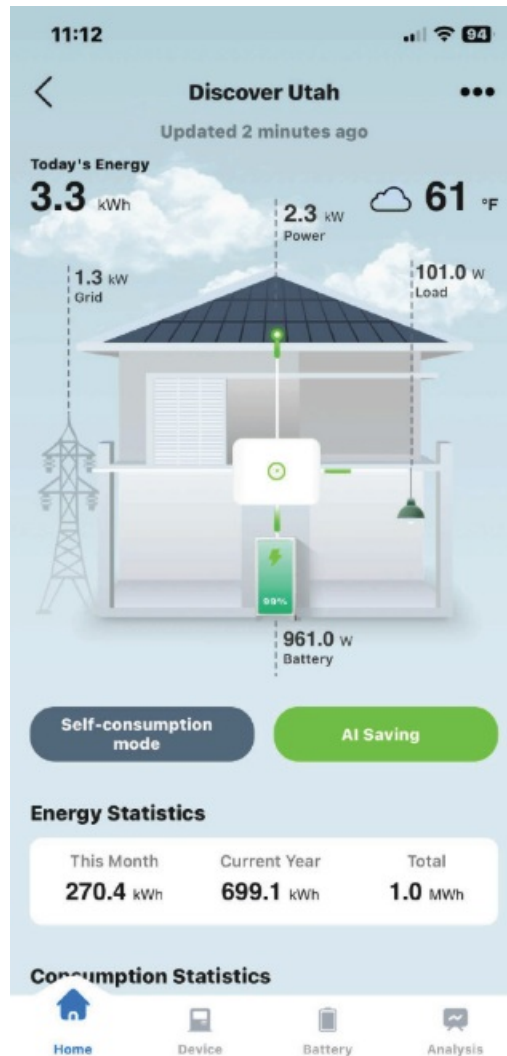
Product Usage Instructions

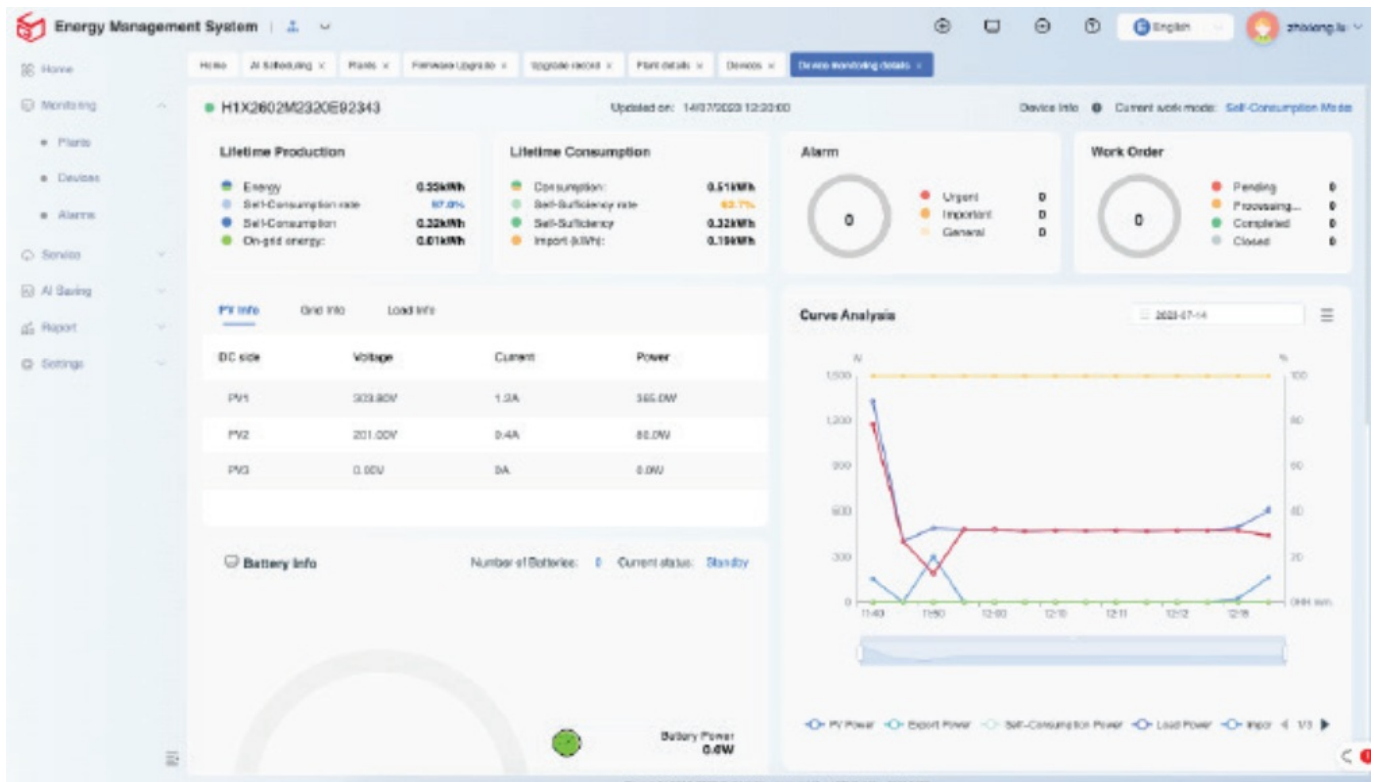
1. **Reporting and Analysis:** Use the app to generate reports on production and consumption data for analysis.
2. **Service Request:** Submit service requests through the app and track their progress in real-time.
3. **Remote Monitoring:** Monitor multiple sites remotely using the app to keep an eye on energy performance.
4. **Configuration:** Configure parameters, settings, working modes, and update firmware of your energy systems from anywhere.

5. **Battery Health:** Analyze battery health information provided by the app for optimal performance.
6. **Notifications:** Receive real-time notifications in the app, via SMS, or email to stay informed about system status.

Installation of eSAJ EMS App

Energy Management System Application for Installers











- Monitor Multiple Sites
- Remote Updates
- Alarm Management
- Battery Health Analysis
- Site and User Transfers
- Manage After-Sales Service
- Warranty Verifications

Online Web Tool: <https://esaj-home.saj-electric.com>



Features

-  Reporting, Production and Consumption Analysis.
-  Remotely Monitor Multiple Sites. Transfer Sites and Users.
-  Battery Health Analysis.
-  Request Service, Track Progress.

-  Remotely Configure Parameters, Settings, Working Modes and Update Firmware.
-  Real-time In-App, SMS, E-mail Notifications.

discoverlithium.com

Frequently Asked Questions

How can I access the battery health analysis feature?

The battery health analysis feature can be found in the app's settings menu under the "Battery Health" section.


Can I customize the types of notifications I receive?

Yes, you can customize notification preferences in the app's settings to choose between in-app, SMS, or email notifications.

Is it possible to monitor sites from different geographical locations?

Yes, the app allows you to remotely monitor and manage multiple sites, regardless of their geographical locations.

Documents / Resources

	<p>SAJ H2B2 eSAJ EMS App [pdf] User Guide H2B2 eSAJ EMS App, H2B2, eSAJ EMS App, EMS App, App</p>
------------------------------------------------------------------------------------	-----------------------------------------------------------------------------------------------------------------------

References

-  [Lithium LiFePO4 Battery Manufacturers/Suppliers | Discover Energy Systems](#)
-  esaj-home.saj-electric.com
- [User Manual](#)

[Manuals+](#), [Privacy Policy](#)

This website is an independent publication and is neither affiliated with nor endorsed by any of the trademark owners. The "Bluetooth®" word mark and logos are registered trademarks owned by Bluetooth SIG, Inc. The "Wi-Fi®" word mark and logos are registered trademarks owned by the Wi-Fi Alliance. Any use of these marks on this website does not imply any affiliation with or endorsement.