




[Home](#) » [Saiweihong](#) » **Saiweihong 25SWH0001 Build Your Own Wireless Speaker Instruction Manual** 

Contents [[hide](#)]

- [1 Saiweihong 25SWH0001 Build Your Own Wireless Speaker](#)
- [2 Product Information](#)
- [3 Installation](#)
- [4 Build Your Own Speaker](#)
- [5 Assemble the Front Panel](#)
- [6 Assemble the Top Panel](#)
- [7 Assemble the Back Panel](#)
- [8 Assemble the Bottom Panel](#)
- [9 Join the 6 Panels Together](#)
- [10 Wiring Connections Instructions](#)
- [11 Bluetooth Connection & LED Sensitivity Adjustment](#)
- [12 Adjust LED Sensitivity](#)
- [13 FCC Warning](#)
- [14 FAQ](#)
- [15 Documents / Resources](#)
 - [15.1 References](#)

Saiweihong

Saiweihong 25SWH0001 Build Your Own Wireless Speaker



Product Information

Specifications

- Compliance: Part 15 of FCC Rules
- RF Exposure: Meets general RF exposure requirements

Product Usage Instructions

Before using the device, ensure that it is within the specified models listed above and complies with FCC regulations.

Installation

1. Place the device on a stable surface with proper ventilation.
2. Connect the device to a power outlet using the provided cable.
3. Ensure the device is within range of your wireless network for optimal performance.

Build Your Own Speaker

A Fun DIY Kit for Kids and Families (Ages 8+)

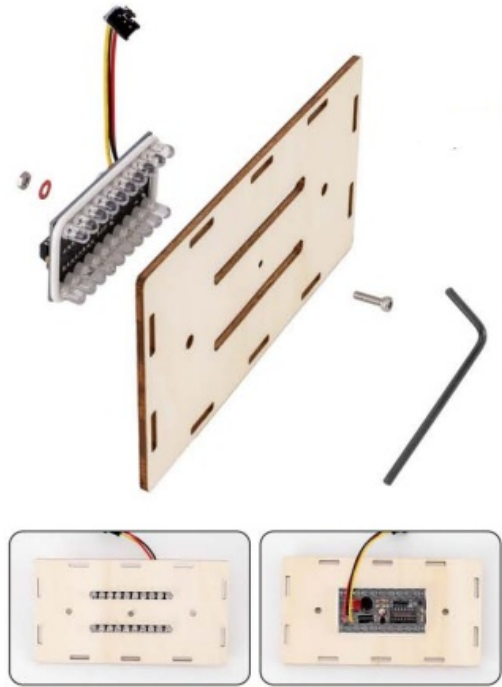
Welcome to the exciting world of DIY audio! Build your own Wireless Speaker in 7 easy steps. combining electronics, woodworking, and sound engineering- all while having fun!



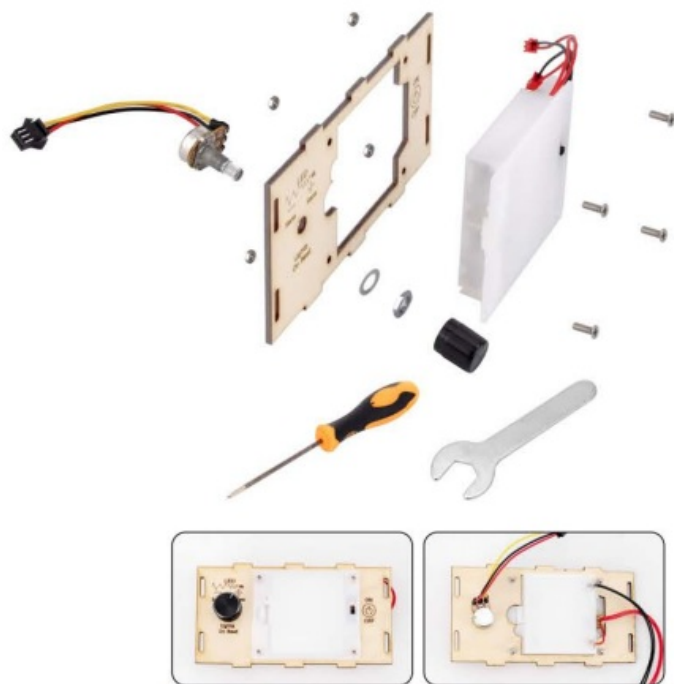
Assemble the Front Panel



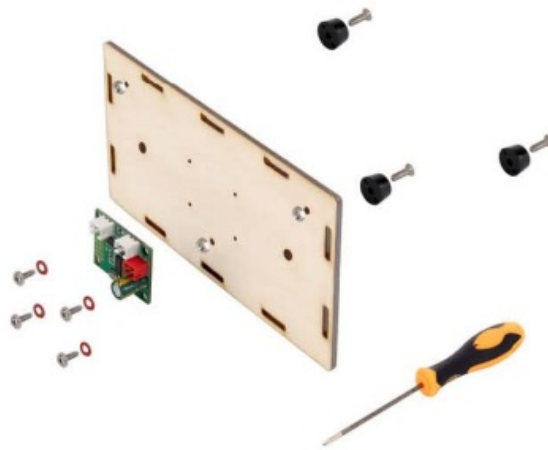
Assemble the Top Panel



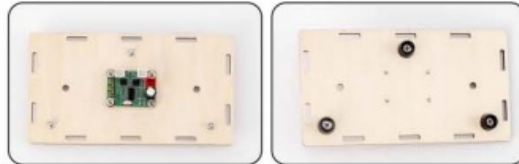
Assemble the Back Panel



Assemble the Bottom Panel



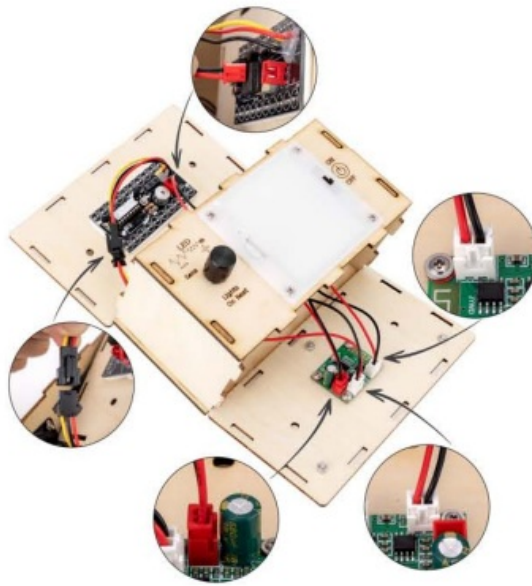
Align the two front pads with the speaker's front for stability



Join the 6 Panels Together



Wiring Connections Instructions



Bluetooth Connection & LED Sensitivity Adjustment



Tips:

1. Knob adjusts LED only, not volume.
2. At max volume: LEDs may stay fully lit.
3. At low volume: Only 1-2 LEDs may flash irregularly.

Low Battery Alert:

If Bluetooth disconnects, reconnects repeatedly,
music stutters, or volume drops suddenly without adjustment, replace the batteries



Adjust LED Sensitivity

1. Turn the knob on the back to set the LED light sensitivity.
2. Match the sensitivity to your volume for the best rhythm effect.

FCC Warning

This device complies with part 15 of the FCC Rules. Operation is subject to the following two conditions:

1. This device may not cause harmful interference, and
2. This device must accept any interference received, including interference that may cause undesired operation.

Any Changes or modifications not expressly approved by the party responsible for compliance could void the user's authority to operate the equipment.

Note: This equipment has been tested and found to comply with the limits for a Class B digital device, pursuant to part 15 of the FCC Rules. These limits are designed to provide reasonable protection against harmful interference in a residential installation. This equipment generates uses and can radiate radio frequency energy and, if not installed and used in accordance with the instructions, may cause harmful interference to radio communications. However, there is no guarantee that interference will not occur in a particular installation. If this equipment does cause harmful interference to radio or television reception, which can be determined by turning the equipment off and on, the user is encouraged to try to correct the interference by one or more of the following measures:

- Reorient or relocate the receiving antenna.
- Increase the separation between the equipment and receiver.

- Connect the equipment into an outlet on a circuit different from that to which the receiver is connected.
- Consult the dealer or an experienced radio/TV technician for help.

* RF warning for Portable device:

The device has been evaluated to meet general RF exposure requirement. The device can be used in portable exposure condition without restriction.


FCC ID: 2BPZO-25SWH0002A

Model(s): 25SWH0001, 25SWH0003, 25SWH0004, 25SWH0005, 25SWH0006, 25SWH0007, 25SWH0008, 25SWH0009, 25SWH0010

FAQ

- **Q: What should I do if the device encounters interference?**
A: If interference occurs, try reorienting or relocating the device or increasing the distance between devices to minimize interference.
- **Q: Can I use the device in portable conditions?**
A: Yes, the device has been evaluated for portable use without restrictions based on RF exposure requirements.

Documents / Resources

	Saiweihong 25SWH0001 Build Your Own Wireless Speaker [pdf] Instruction Manual 25SWH0001, 25SWH0001 Build Your Own Wireless Speaker, Build Your Own Wireless Speaker, Own Wireless Speaker, Wireless Speaker, Speaker
---	---

References

- [User Manual](#)

Leave a comment

Your email address will not be published. Required fields are marked *

Comment *

Name

Email

Website

☐ Save my name, email, and website in this browser for the next time I comment.

Post Comment

Search:

e.g. whirlpool wrf535swhz

Search

[Manuals+](#) | [Upload](#) | [Deep Search](#) | [Privacy Policy](#) | [@manuals.plus](#) | [YouTube](#)

This website is an independent publication and is neither affiliated with nor endorsed by any of the trademark owners. The "Bluetooth®" word mark and logos are registered trademarks owned by Bluetooth SIG, Inc. The "Wi-Fi®" word mark and logos are registered trademarks owned by the Wi-Fi Alliance. Any use of these marks on this website does not imply any affiliation with or endorsement.