

# Sainlogic QT-06 Sprinkler Timer User Manual

## Contents

### 1 Smart Water Valve

#### 1.1 (Zigbee)

#### 1.2 User Manual

##### 1.2.1 Performance and instructions

##### 1.2.2 Instructions for use:

##### 1.2.3 Metal Joint

##### 1.2.4 Product parameters

##### 1.2.5 Operation Guide

##### 1.2.6 Gateway networking tutorial

##### 1.2.7 Gateway adds and connects intelligent water valve

##### 1.2.8 Mobile APP Interface

##### 1.2.9 Warranty Regulations

##### 1.2.10 Product Warranty Card

### 2 Documents / Resources

#### 2.1 References

### 3 Related Posts

## Smart Water Valve

(Zigbee)

## User Manual



[www.sainlogic.com](http://www.sainlogic.com)

Performance and instructions

### • Smart water valve

Remote operation: remote control of mobile APP anytime and anywhere, manual control of field devices, and timing control of APP

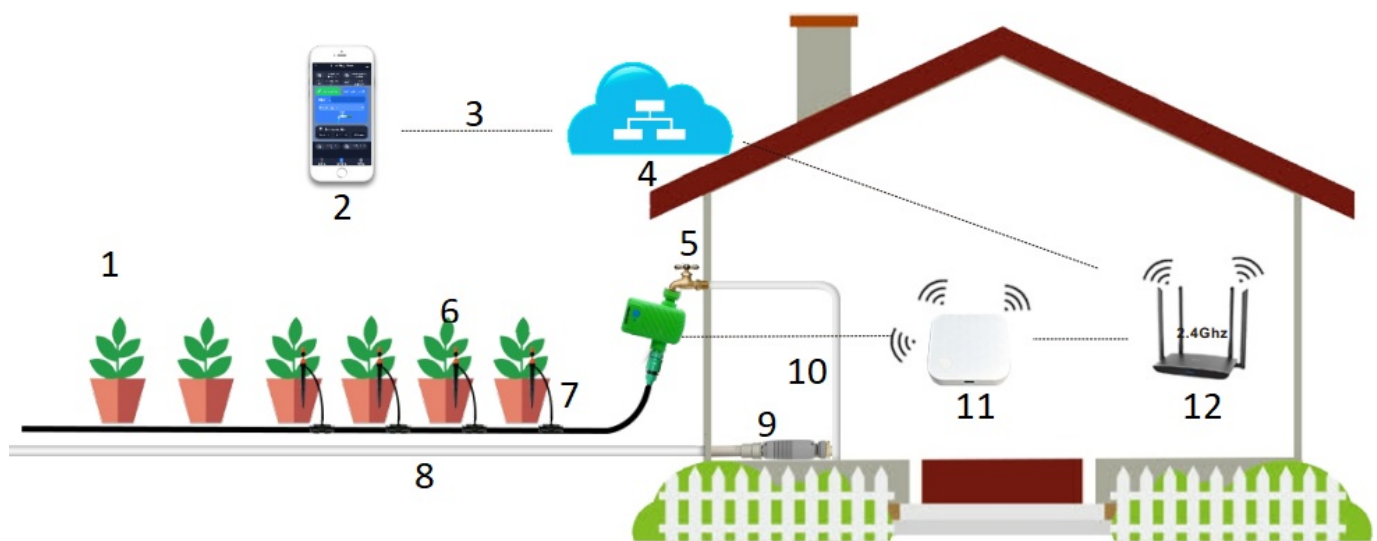
Signal distance: the open distance between gateway and smart water valve is  $\leq 50$  meters

Battery: 4\*AA alkaline dry batteries are used.

Protection grade: IP66. Smart water valve can be installed and used outdoors.

#### Instructions for use:

1. One gateway can be connected with 8 smart water valves.
2. The open distance from the gateway to the smart water valve is  $\leq 50$  meters, and the partition wall distance is  $\leq 20$  meters (determined according to the actual installation environment).
3. Zigbee signal cannot be relayed and jumped through smart water valve.
4. After setting the timing, if the smart water valve is offline, it will be watered according to the timing program.
5. Operational requirements of water flowmeter: the water flow rate is at least 2L/ min, and the water flow is too small to drive the flowmeter to work. There will be a false alarm of "water shortage warning".
6. Statistics will be recorded only when the smart water valve is online for historical records.
7. Water shortage reminder: When the water valve is opened and there is no water, the water shortage warning will be prompted after 15 seconds in the connected state.



1. Lawn irrigation
2. Mobile phone/Tablet
3. Remote control via APP
4. Cloud service
5. Smart water valve
6. Dual-purpose nozzle
7. 812 Hose
8. Water pipe
9. Smart water valve
10. Water pipe
11. Smart gateway
12. Router

## Metal Joint

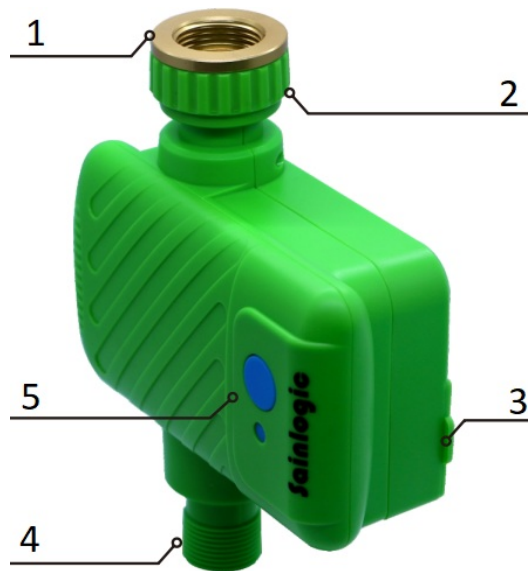
**Practical and more durable**

**Tighten the non-slippery wire back and forth**



**Note: Please wear gloves when installing or disassembling to prevent your hands from being scratched**

**Product parameters**



1. 3/4" water inlet
2. 1 inch internal thread water inlet
3. Battery slot
4. 3/4" external thread outlet
5. Switch / reset button



<b>Product name</b>	Smart water valve (Zigbee)
<b>Caliber</b>	1/2" or 3/4" & 1"
<b>Waterproof level</b>	Ip66
<b>Withstand water pressure</b>	0.2~8bar
<b>Power</b>	4*AA alkaline dry battery



<b>Product name</b>	Smart water valve (Zigbee)
<b>Operating temperature</b>	-10°C~+50°C
<b>Working humidity</b>	0-90%RH No condensation
<b>Power</b>	DC5V/1A
<b>Signal range</b>	Open area ≤ 50 meters

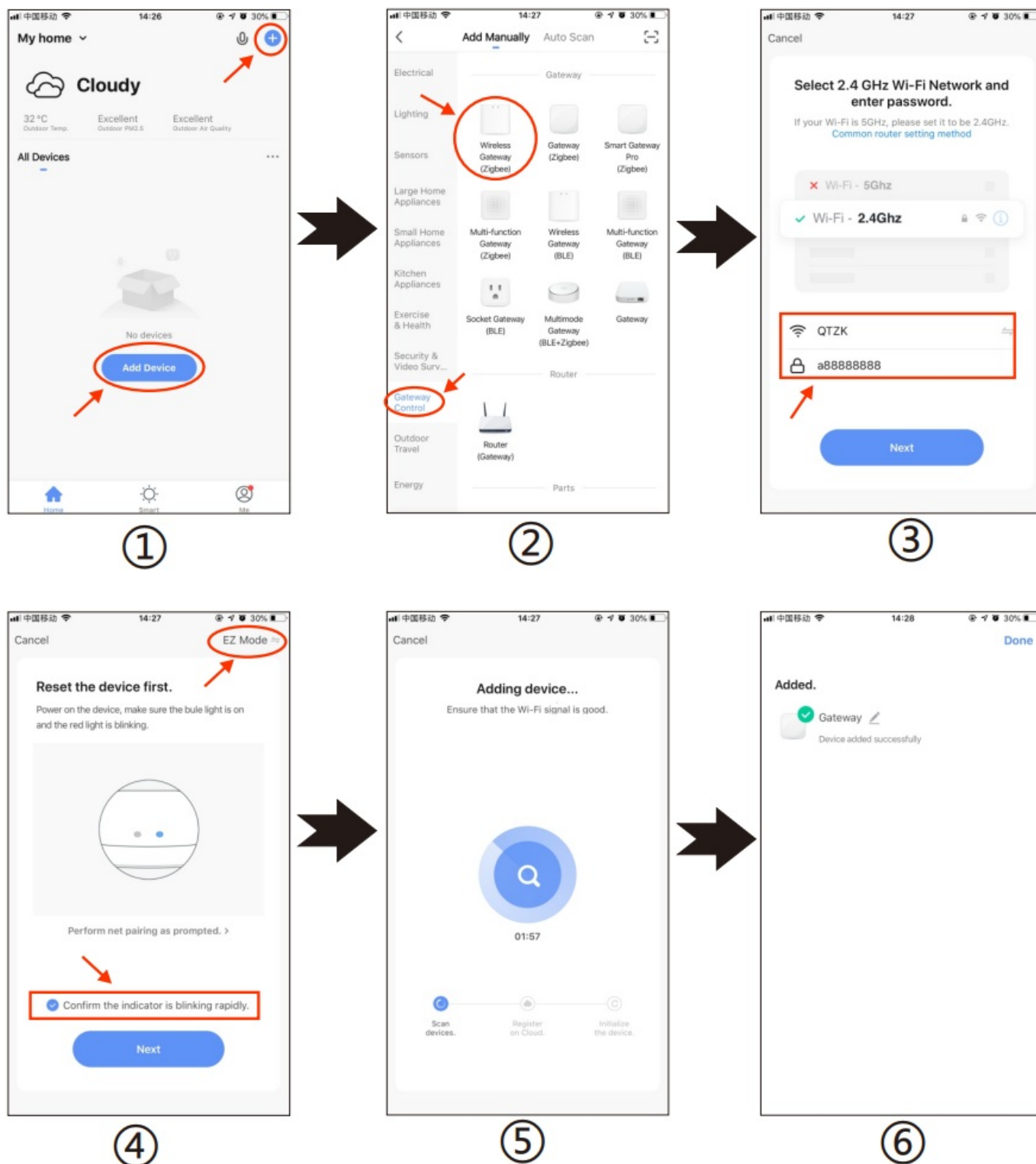
#### Operation Guide

- (1) Scan the QR code to download the “Smart Life” app,
- (2) Register a member account.  
Input your mobile phone number or email address.  
Receive the verification code SMS. Configure your own password.



#### Gateway networking tutorial

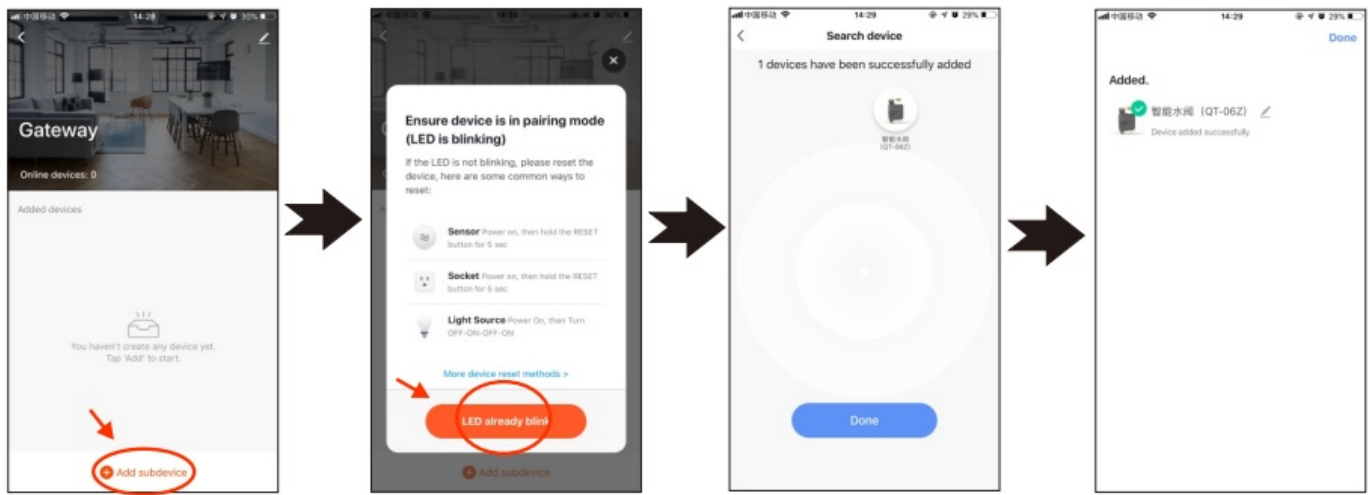
- (1) Open the APP and click add device or “+” in the upper right corner,
- (2) Select gateway central control → wireless gateway (zigbee),
- (3) Enter WiFi account and password (2.4Ghz),
- (4) Check to confirm that the indicator light is flashing, and EZ mode is in the upper right corner,
- (5) Next, enter the interface of adding equipment,
- (6) Wait a moment and add successfully.



#### Gateway adds and connects intelligent water valve

- (1) Open the gateway interface and select "+Add Subdevice".
- (2) Confirm whether the indicator light of the intelligent water valve flashes (press and hold the switch button of the intelligent water valve for 5 seconds, and the indicator light switches from long on to flash or extinguish).
- (3) Automatically search for equipment, and click Finish after searching for the equipment.
- (4) If the addition is successful, click the name of the brush to modify it.





Mobile APP Interface

It's easy to understand and operate



1. 1.Last irrigation time
- 2.Remaining power
2. 1.Next irrigation time
- 2.Current weather
3. Water capacity
- 1.Single irrigation
- 2.Cycle irrigation

4.
  - 1.Real-time feedback of watering time
  - 2.Real-time feedback of watering flow
5. Timing watering
  - 1.Set timing by flow
  - 2.Set timing by duration
  - 3.Rain and snow delay
6. Watering history
  - 1.Total monthly watering volume
  - 2.Records of each open
7. Control switch button
8. Watering time
  - 1.single irrigation
  - 2.cycle irrigation

#### **Warranty Regulations**

1. The warranty period of this product is one year.
2. During the warranty period, any failure occurred under normal use according to the instruction manual (judged by the official staff of our company) shall be repaired free of charge.
3. During the warranty period, if one of the following situations occurs, it must be repaired as a charge:
  - (1) This guarantee and valid purchase certificate cannot be provided.
  - (2) Faults and damages caused by incorrect use and improper repair by oneself.
  - (3) Failure or damage caused by transportation, moving and falling after receiving goods.
  - (4) Damage caused by other inevitable bad factors.
  - (5) Failure or damage caused by equipment soaking in water.
  - (6) If the temperature is lower than 0°C, please disassemble and put it back indoors. If the equipment is damaged due to this problem, there is no warranty.
4. We only make the above warranties, and do not make any other express or implied warranties (including implied warranties of merchantability, rationality and adaptability to a specific application, etc.). Our company is not responsible for any special, accidental or indirect damages, whether in contract, civil negligence or other aspects.

#### **Product Warranty Card**

Product name: \_\_\_\_\_

Product model: \_\_\_\_\_

Ex-factory number: \_\_\_\_\_

Date of appearance: \_\_\_\_\_

Customer name: \_\_\_\_\_

Contact number: \_\_\_\_\_



Customer address: \_\_\_\_\_

Warranty contents: \_\_\_\_\_ After sale: \_\_\_\_\_

Client signature: \_\_\_\_\_ ☐ Satisfied ☐ Dissatisfied

Warranty contents: \_\_\_\_\_ After sale: \_\_\_\_\_

Client signature: \_\_\_\_\_ ☐ Satisfied ☐ Dissatisfied

Warranty contents: \_\_\_\_\_ After sale: \_\_\_\_\_

Client signature: \_\_\_\_\_ ☐ Satisfied ☐ Dissatisfied

**PRODUCT INFO:**

**Name: Sainlogic Smart Water Valve**

**Model: S-W-1**

**Brand: Sainlogic**

**Manufacturing Date: 01.18.2022**



**Manufacturer:**

SAINLOGIC HIGH TECH INNOVATION CO.,LTD

F9, De Zhong Industrial Park,  
Li Pu Street,  
Shenzhen, 518001,  
China

Phone: +86 755 80759871

Web: [www.sainlogic.com](http://www.sainlogic.com)

Email: [info@sainlogic.com](mailto:info@sainlogic.com)



LOTUS GLOBAL CD., LTD.

1 Four Seasons Terracwest Drayton,  
Middlesex London, UB7 SGG  
United Kingdom

Phone: +44-20-75868010, +44-20-70961611

Fax: +44-20-79006187

Email: [Peter@LotusglobalUK.com](mailto:Peter@LotusglobalUK.com)


**Made in China**



WEEE-Reg.-Nº

---

## Documents / Resources

<p>Smart Water Valve (Zigbee) User Manual</p>  <p>www.sainlogic.com</p>	<p><a href="#">Sainlogic QT-06 Sprinkler Timer</a> [pdf] User Manual QT-06 Sprinkler Timer, QT-06, Sprinkler Timer, Timer</p>
--	---

## References

- S [Sainlogic High Tech Innovation Co.,LTD](#)
- [User Manual](#)