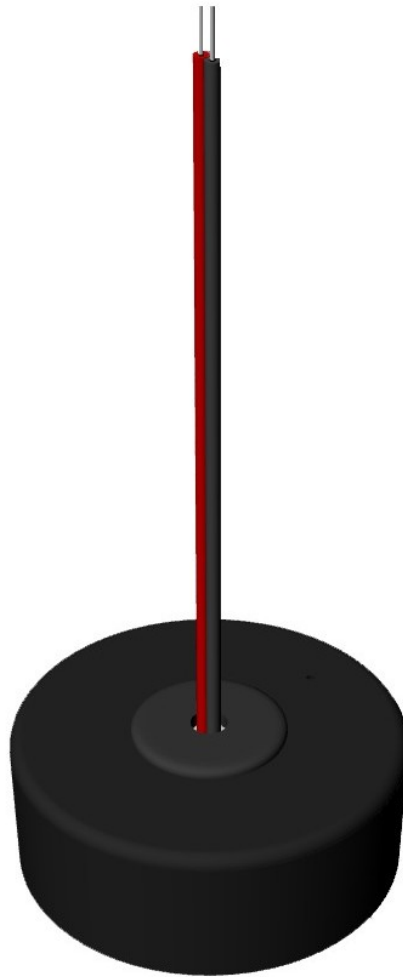


## Sage R1-1 L Push Switch RF Remote Controller User Manual

[Home](#) » [Sage](#) » Sage R1-1 L Push Switch RF Remote Controller User Manual 

# Sage

**Push Switch RF Remote Controller**  
**Model No.: R1-1(L)**  
**R1-1(L) Push Switch RF Remote Controller**  
RF dimming/Push dim/Wall junction box mounting



**User Manual**  
Ver 1.0.3

CE RoHS  LVD RED

#### Contents

- [1 Features](#)
- [2 Technical Parameters](#)
- [3 Dimension](#)
- [4 Battery Installation](#)
- [5 Wiring diagram](#)
- [6 Match Remote Control \(two match ways\)](#)
- [7 Safety information](#)
- [8 Documents / Resources](#)
- [9 Related Posts](#)

## Features

- Apply to single color LED RF controller or RF dimming driver.
- Connect with push switch to achieve on/off and 0-100% dimming function.
- Adopt 2.4GHz wireless technology, remote distance up to 30m.
- Each remote can match one or more receiver. CR2032 button battery powered.

Technical Parameters

Input and Output

Output signal	RF (2.4GHz)
Working voltage	3VDC  CR2032
Working current	5mA
Standby current	2μA
Standby time	2 years
Remote distance	30m(Barrier-free space)

Warranty

Warranty	5 years
----------	---------

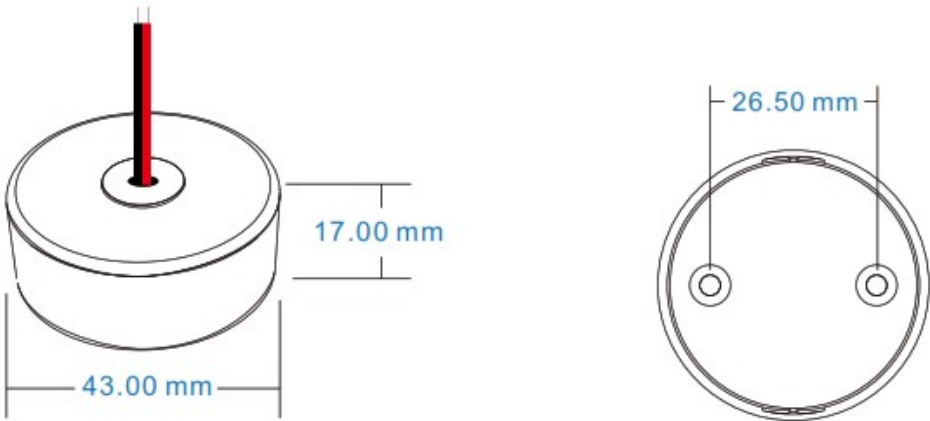
Safety and EMC

EMC standard (EMC)	ETSI EN 301 489-1 V2.2.3 ETSI EN 301 489-17 V3.2.4
Safety standard(LVD)	EN 62368-1:2020+A11:2020
Radio Equipment(RED)	ETSI EN 300 328 V2.2.2
Certification	CE,EMC,LVD,RED

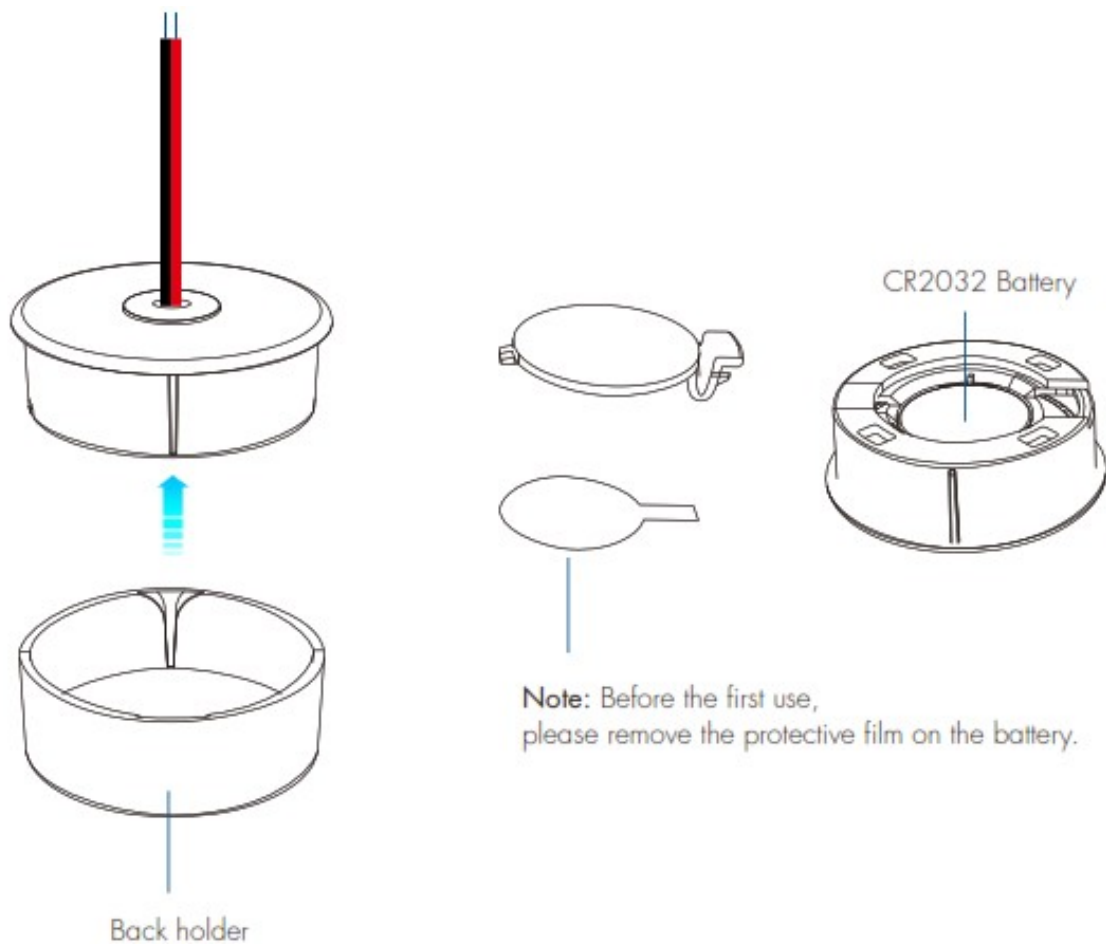
Environment

Operation temperature	Ta: -30 °C ~ +55 °C
IP rating	IP20

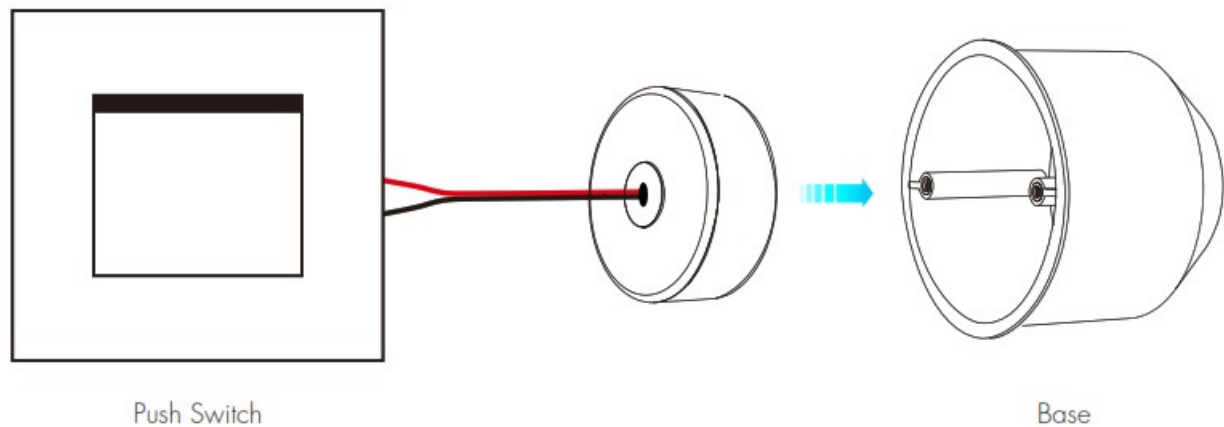
Dimension



## Battery Installation



## Wiring diagram



Push switch function:

1. Short press: Turn on/off light.
2. Long press(1-6s): When light is on, increase or decrease brightness continuously.

## Match Remote Control (two match ways)

End user can choose the suitable match/delete ways. Two options are offered for selection:

## Use the controller's Match key

### Match:

Short press match key, immediately press the push switch.

The LED indicator fast flash a few times means match is successful.

### Delete:

Press and hold match key for 5s to delete all match, The LED indicator fast flash a few times means all matched remotes were deleted.

## Use Power Restart

### Match:

Switch off the power, then switch on power, repeat again.

Immediately short press the push switch 3 times.

The light blinks 3 times means match is successful.

### Delete:

Switch off the power, then switch on power, repeat again.

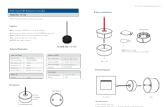
Immediately short press the push switch 5 times.

The light blinks 5 times means all matched remotes were deleted.

## Safety information

1. Read all instructions carefully before you begin this installation.
2. When installing battery, pay attention to the battery positive and negative polarity.  
A long time without the remote control, remove the battery.  
When remote distance becomes smaller and insensitive, replace the battery.
3. If no response from the receiver, please re-match the remote.
4. For indoor and dry location use only.

## Documents / Resources

	<a href="#">Sage R1-1 L Push Switch RF Remote Controller</a> [pdf] User Manual R1-1 L, Push Switch RF Remote Controller, R1-1 L Push Switch RF Remote Controller, Switch RF Remote Controller, RF Remote Controller, Remote Controller, Controller
---	---