



SAGE LU MEI PK1 Rotary Panel RF Remote Controller User Manual

[Home](#) » [SAGE LU MEI](#) » SAGE LU MEI PK1 Rotary Panel RF Remote Controller User Manual 

Contents

- [1 SAGE LU MEI PK1 Rotary Panel RF Remote Controller](#)
- [2 Rotary Panel RF Remote Controller](#)
- [3 Features](#)
- [4 Technical Parameters](#)
- [5 Warranty](#)
- [6 Mechanical Structures and Installations](#)
- [7 Knob function](#)
- [8 Match Remote Control \(two match ways\)](#)
- [9 Safety information](#)
- [10 Documents / Resources](#)
- [11 Related Posts](#)

sage

SAGE LU MEI PK1 Rotary Panel RF Remote Controller



Rotary Panel RF Remote Controller

Model No.: PK1, PK2, PK3

Rotary dimming/1-3 color/Wireless remote 30m distance/CR2032 battery



PK1
1 Zone Dimming



PK2
1 Zone CCT



PK3
1 Zone RGB

Features

- Apply to single color, dual color or RGB LED controller.
- Rotate knob to change RGB color, color temperature or brightness, support long press or twice click operation.
- Each remote can match one or more receiver.
- CR2032 battery powered.
- Removeable and stick anywhere easily, or mount on wall use panel base.

Technical Parameters

Input and Output

- Output signal: RF(2.4GHz)
- Working voltage: 3VDC(CR2032)
- Working current: 5mA
- Standby current: 10 μ A
- Standby time: 1 year
- Remote distance: 30m(Barrier-free space)

Warranty

- Warranty: 5 years

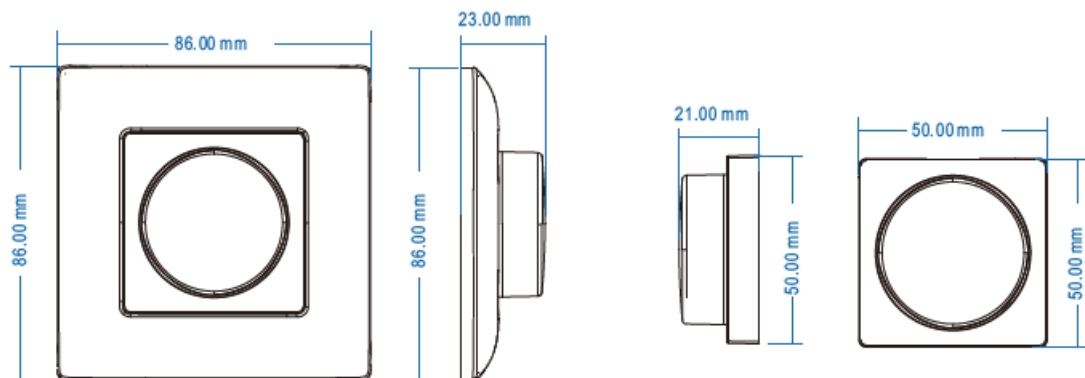
Safety and EMC

- EMC standard (EMC): ETSI EN 301 489-1 V2.2.3: ETSI EN 301 489-17 V3.2.4
- Safety standard(LVD): EN 62368-1:2020+A11:2020
- Radio Equipment(RED): ETSI EN 300 328 V2.2.2
- Certification: CE,EMC,LVD,RED

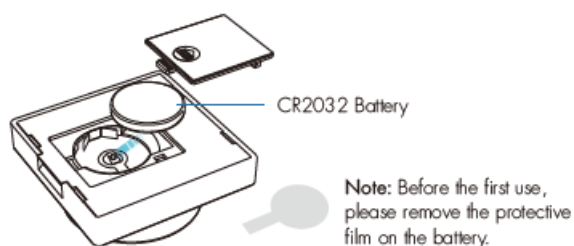
Environment

- Operation temperature: Ta: -30OC ~ +55OC
- IP rating: IP20

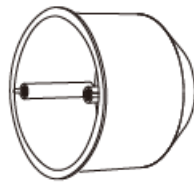
Mechanical Structures and Installations



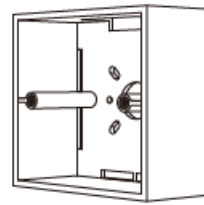
Replace battery:



Typical base as below:

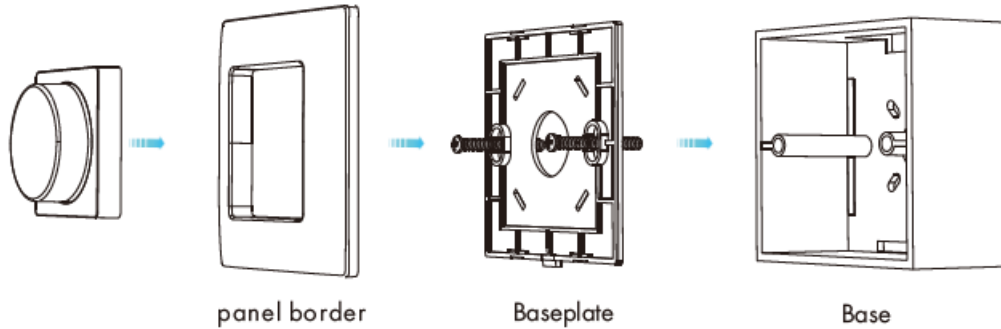


European style



86 size

Installation diagram:



To fix the panel, two options are offered for selection:

- **Option 1:** fix it on the wall with two screws.
- **Option 2:** adhere it to the wall with paster.

Knob function

PK1 Single color dimming remote

- **Push:** Turn on or off light.
After turn on light:
- **Rotate:** Rotate knob to adjust brightness(2.5 turns, 50 levels).
- Long push(1-6s): Continuous 256 levels brightness adjustment.

PK2 Color temperature remote

- **Push:** Turn on or off light.
After turn on light:
- **Rotate:** Rotate knob to change color temperature or brightness (2.5 turns, 50 levels).
- **Push twice:** Switch between color temperature or brightness adjustment.
- Long push(1-6s): Continuous 256 levels brightness adjustment.

PK3 RGB remote

- **Push:** Turn on or off light.
After turn on light:
- **Rotate:** Rotate knob to change RGB color (3 turns, 60 colors) or brightness (2.5 turns, 50 levels).
- **Push twice:** Switch between RGB color or brightness adjustment.
- Long push(1-6s): Continuous 256 levels brightness adjustment.

Match Remote Control (two match ways)

End user can choose the suitable match/delete ways. Two options are offered for selection:

Use the controller's Match key

Match:

Short press match key, immediately push the knob. The LED indicator fast flash a few times means match is successful.

Delete:

Press and hold match key for 5s to delete all match, The LED indicator fast flash a few times means all matched remotes were deleted.

Use Power Restart

Match:

Switch off the power, then switch on power, repeat again. Immediately push the knob 3 times. The light blinks 3 times means match is successful.


Delete:

Switch off the power, then switch on power, repeat again. Immediately push the knob 5 times. The light blinks 5 times means all matched remotes were deleted.

Safety information

1. Read all instructions carefully before you begin this installation.
2. When installing battery, pay attention to the battery positive and negative polarity. A long time without the remote control, remove the battery.
When remote distance becomes smaller and insensitive, replace the battery.
3. If no response from the receiver, please re-match the remote.
4. Gently handle remote, beware of falling.
5. For indoor and dry location use only.

Documents / Resources

	SAGE LU MEI PK1 Rotary Panel RF Remote Controller [pdf] User Manual PK1, PK2, PK3, Rotary Panel RF Remote Controller, PK1 Rotary Panel RF Remote Controller, RF Remote Controller, Controller
---	---